

OFFICE SPACE FOR LEASE

215 E CHATHAM STREET | CARY, NC 27511

MID-TOWN SQUARE



Karah Jennings McConnell
kjennings@lee-associates.com
O: 919.576.2502
C: 919.817.0705

Moss Withers, SIOR, MBA
mwithers@lee-associates.com
O: 919.576.2501

 **LEE &
ASSOCIATES**
COMMERCIAL REAL ESTATE SERVICES
RALEIGH • DURHAM • WILMINGTON

PROPERTY OVERVIEW

AVAILABILITY

- Suite 215: ±1,560 RSF
- Lease Rate: \$42/SF, Full Service

LOCATION DESCRIPTION

Located in the heart of Downtown Cary, 215 E Chatham St offers exceptional accessibility just minutes from both Raleigh and Durham, while being within walking distance of local restaurants, bakeries, parks, breweries, and art venues. Mid-Town Square is conveniently located only 15 minutes from both Research Triangle Park and Raleigh-Durham International Airport.

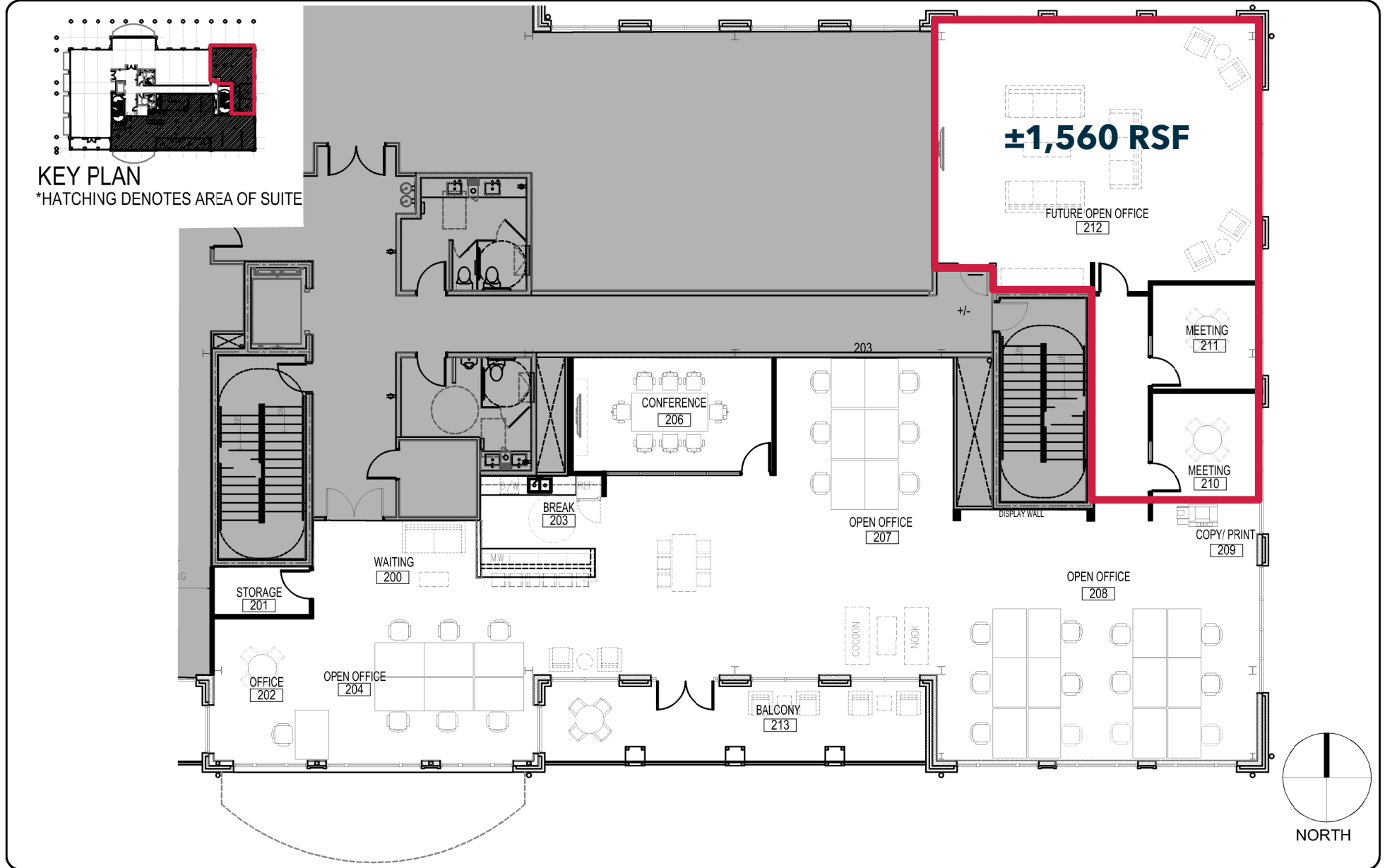
PROPERTY HIGHLIGHTS

- 2nd Generation Class A Office Space
- On-site & public parking available
- Co-tenants include Faulisi's Caffe, SideBar, Epicurean Ristorante, Harris & Company Insurance, the Tutu School, and Bond Brothers
- Walking distance to numerous dining, hospitality and entertainment options, US Post Office, Cary Public Library, Downtown Cary Park, PageWalker Arts & History Center, and Town of Cary Municipal Offices
- Surrounded by upscale residential developments including the Meridian East Chatham, Chatham Walk, Park Station Townhomes, and The Jordan



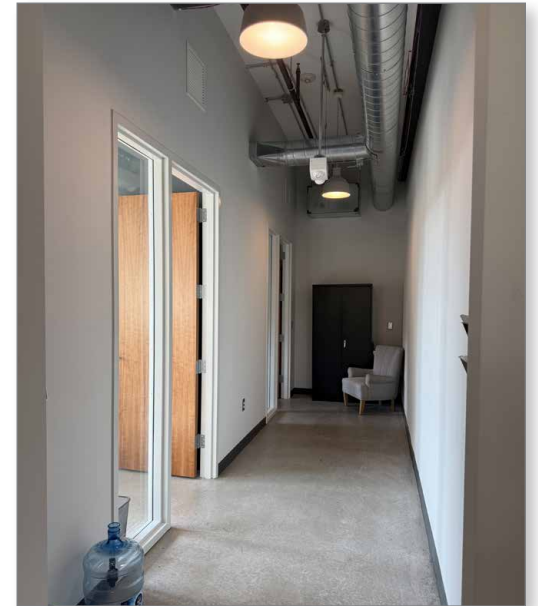
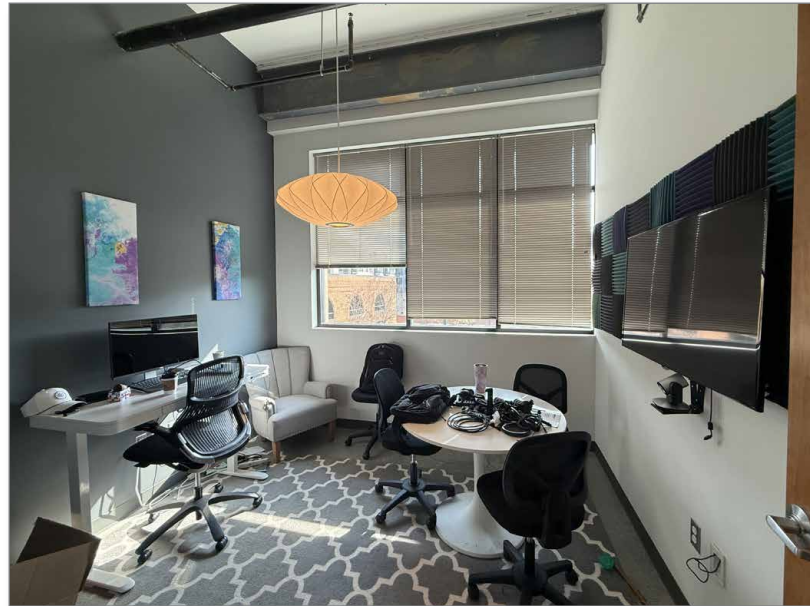
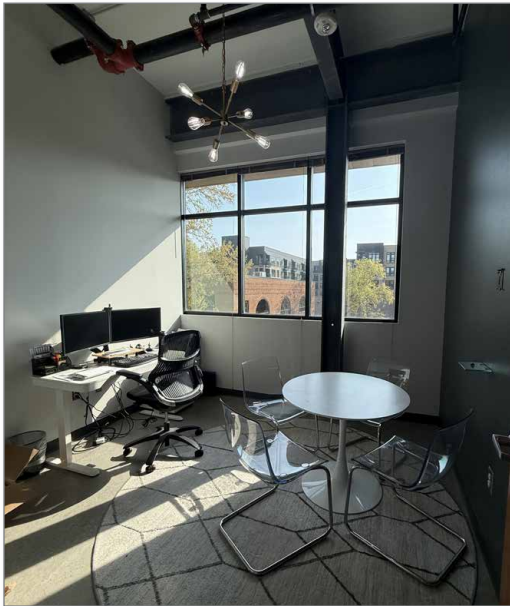
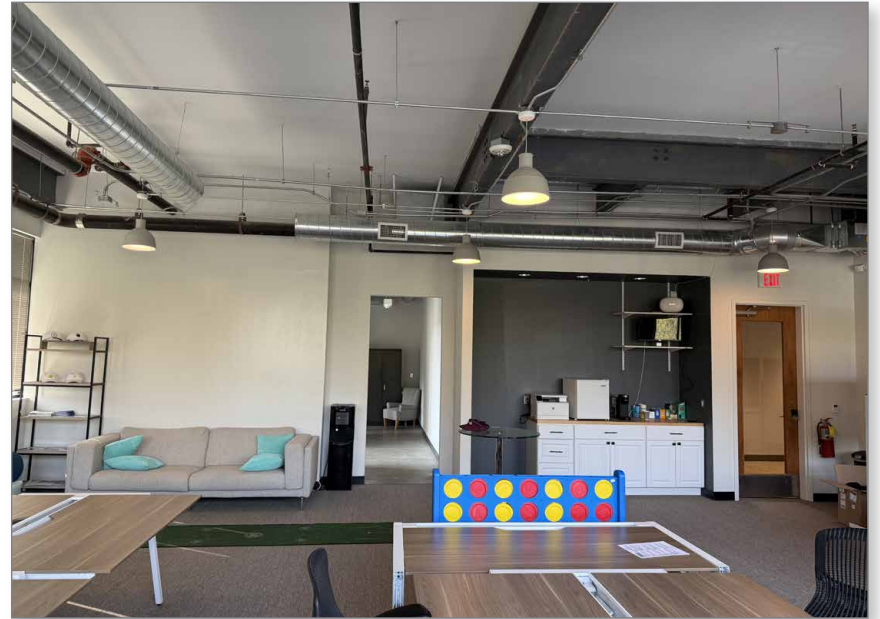
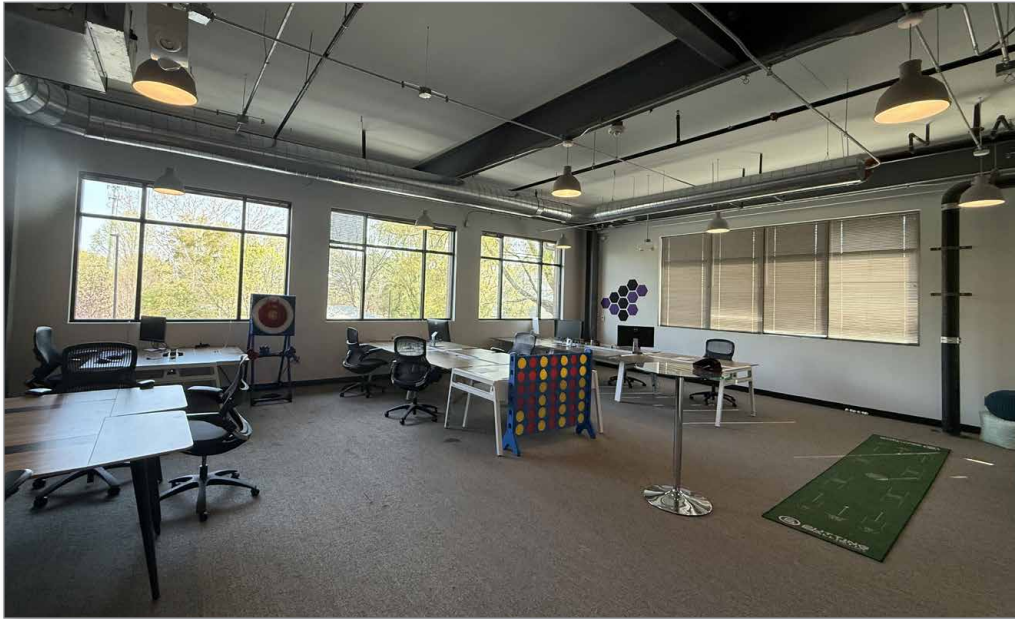
MID-TOWN SQUARE • 215 E CHATHAM STREET • CARY, NC 27511

FLOOR PLAN - SUITE 215



MID-TOWN SQUARE • 215 E CHATHAM STREET • CARY, NC 27511

PHOTOS - SUITE 215



MID-TOWN SQUARE • 215 E CHATHAM STREET • CARY, NC 27511

AREA OVERVIEW

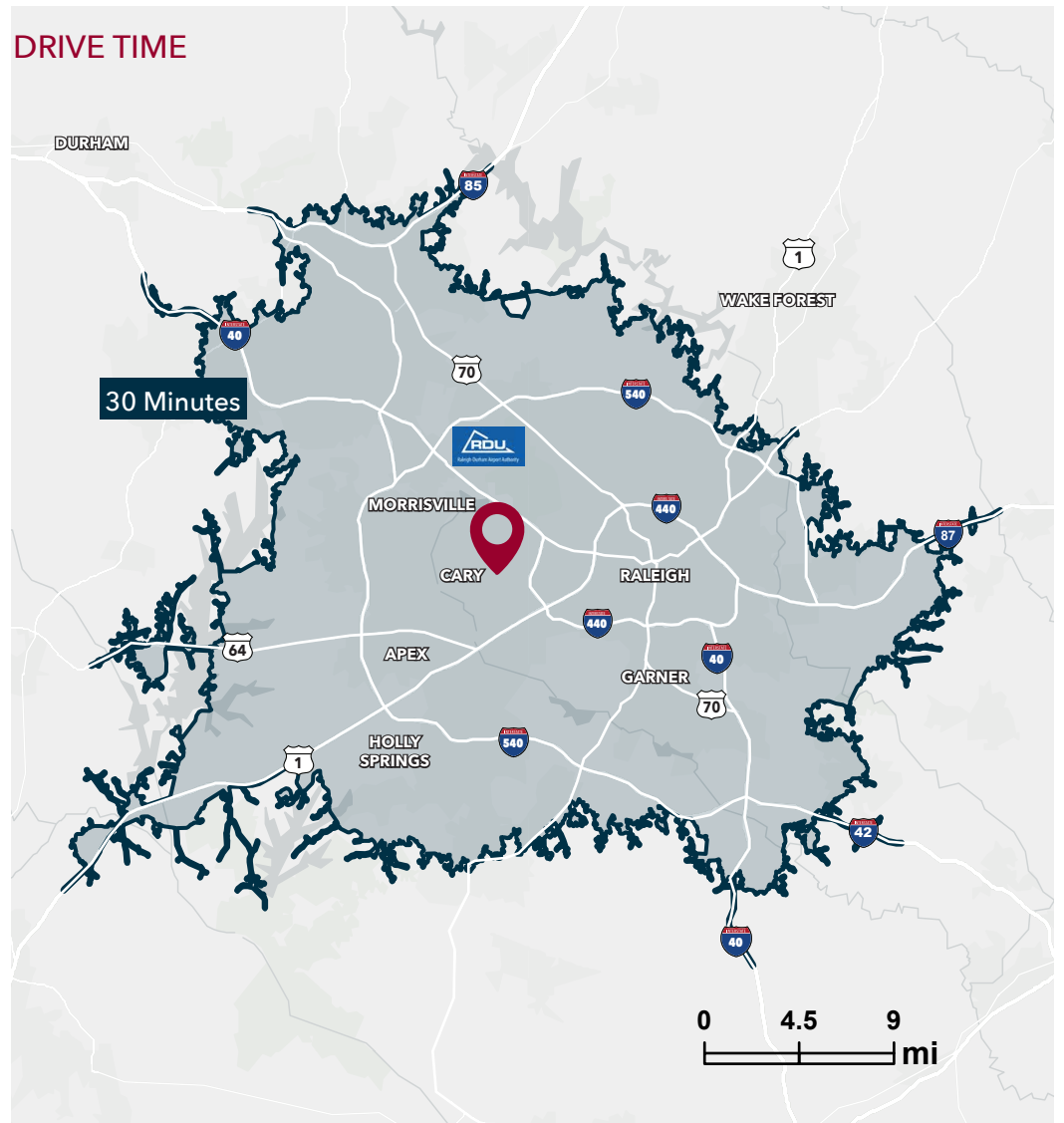


MID-TOWN SQUARE • 215 E CHATHAM STREET • CARY, NC 27511

DEMOGRAPHICS

	1 Mile	3 Miles	5 Miles
Population	12,431	84,781	188,655
Avg. HH Income	\$116,413	\$135,342	\$147,477
No. of Businesses	771	4,563	9,992
No. of Employees	5,896	47,136	121,169
Total Daytime Population	13,120	96,809	239,261
Total Households	5,038	37,791	81,550
Average Home Value	\$482,544	\$545,056	\$606,817
Median Age	37.7	36.9	36.9
Bachelor's Degree or Greater	49.3%	63.7%	68.4%

Source: ESRI 2025



MID-TOWN SQUARE • 215 E CHATHAM STREET • CARY, NC 27511

RESTAURANTS, RETAIL, BREWERIES AND MORE IN DOWNTOWN CARY:

RESTAURANTS & CAFES

- | | |
|------------------------------|----------------------------------|
| 1 Annelore's German Bakery | 13 Hank's Downtown Dive Bar |
| 2 Bosphorus | 14 Taipei 101 |
| 3 Upper Deck Sports Pub | 15 BREW Coffee Bar |
| 4 Zest Sushi & Small Plates | 16 FRESH. Local Ice Cream |
| 5 SAAP | 17 Crosstown Pub & Grill |
| 6 La Farm Bakery | 18 MilkShake Factory |
| 7 Kababish Cafe | 19 Scratch Kitchen & Taproom |
| 8 Academy Street Bistro | 20 Big Dom's Bagel |
| 9 Once in a Blue Moon Bakery | 21 Faulisi Caffè |
| 10 Serendipity Deli | 22 Pro's Epicurean Market & Cafe |
| 11 Esteamed Coffee | 23 MC Restaurant |
| 12 Di Fara Pizza Tavern | |

BREWERIES & BARS

- | | |
|-------------------------------|--------------------------------------|
| 24 Triangle Beer Co. | 29 The Walk Up |
| 25 Side Bar | 30 Bull City Cider Works |
| 26 Bond Brothers | 31 RBF, Your Authentic Champagne Bar |
| 27 Chatham Street Wine | 32 The Cotton House |
| 28 Pharmacy Bottle + Beverage | |

FITNESS & RECREATION

- | | |
|--------------------------------------|-----------------------|
| 33 Aradia Fitness Cary | 36 Heater Park |
| 34 Herbert C. Young Community Center | 37 Downtown Cary Park |
| 35 Ignium Strength | |

ENTERTAINMENT & VENUES

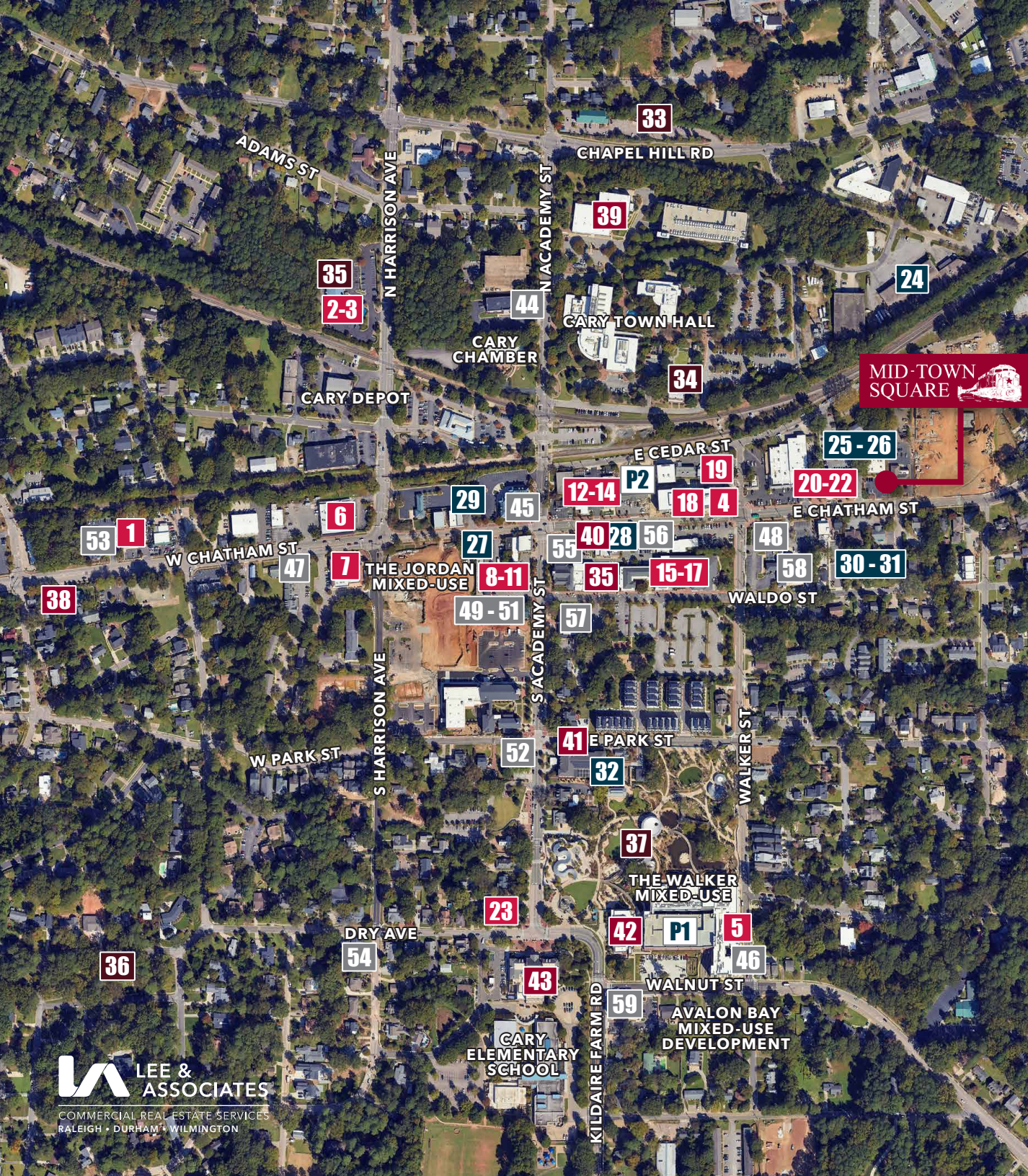
- | | |
|------------------------------|--------------------------|
| 38 The Matthews House | 41 The Mayton Inn |
| 39 Page - Walker Arts Center | 42 Cary Regional Library |
| 40 The Cary Theater | 43 Cary Arts Center |

RETAIL

- | | |
|---------------------------|-------------------------------|
| 44 First Bank | 52 Lana Addison Bridal |
| 45 Fidelity Bank | 53 Chocolate Smiles |
| 46 The Now | 54 Stonehaven Jewelry Gallery |
| 47 Cary Florist | 55 Kitchen & Bath Galleries |
| 48 Cary Farmers Market | 56 Johnson's Jewelers |
| 49 Peak Olive Oil Company | 57 US Postal Service |
| 50 Warm 'n Fuzzy | 58 The Perfect Piece |
| 51 Vintage Vogue | 59 Towne Bank |

PARKING

- | | |
|--------------------|-----------------------|
| P1 The Walker Deck | P2 The Cedar St. Deck |
|--------------------|-----------------------|



CARY QUICK FACTS

Over 190,000
people call Cary
home

#5 Best Place to
Live in the US
(US News & World Report,
June 2025)

Cary's
unemployment
rate is 2.8%
(as of 12/31/25)

Top 5% for Job
Market Strength
(US News & World Report,
June 2025)

Cary is the
7th largest
municipality in
North Carolina

#6 Safest City
in America
(Forbes, February 2025)

Cary has more
than 80 miles of
greenways and
30 parks

72% of residents
hold a Bachelor's
degree or higher



TOWN of CARY
Downtown Park

Presented by:

KARAH JENNINGS MCCONNELL

Executive Vice President, Principal

kjennings@lee-associates.com

O 919.576.2502

M 919.817.0705

MOSS WITHERS, SIOR, MBA

CEO & Principal

mwithers@lee-associates.com

O 919.576.2501



**LEE &
ASSOCIATES**

COMMERCIAL REAL ESTATE SERVICES
RALEIGH • DURHAM • WILMINGTON

All information furnished regarding property for sale, rental or financing is from sources deemed reliable, but no warranty or representation is made to the accuracy thereof and same is submitted to errors, omissions, change of price, rental or other conditions prior to sale, lease or financing or withdrawal without notice. No liability of any kind is to be imposed on the broker herein.

100 Walnut Street | Cary, NC 27511 | 919-576-2500 | lee-associates.com/raleigh