

FOR LEASE

UP TO 5 AC CONTAINER/LAY-DOWN YARD

5627 Todd Acres Drive | Mobile, AL



Tommy Gleason



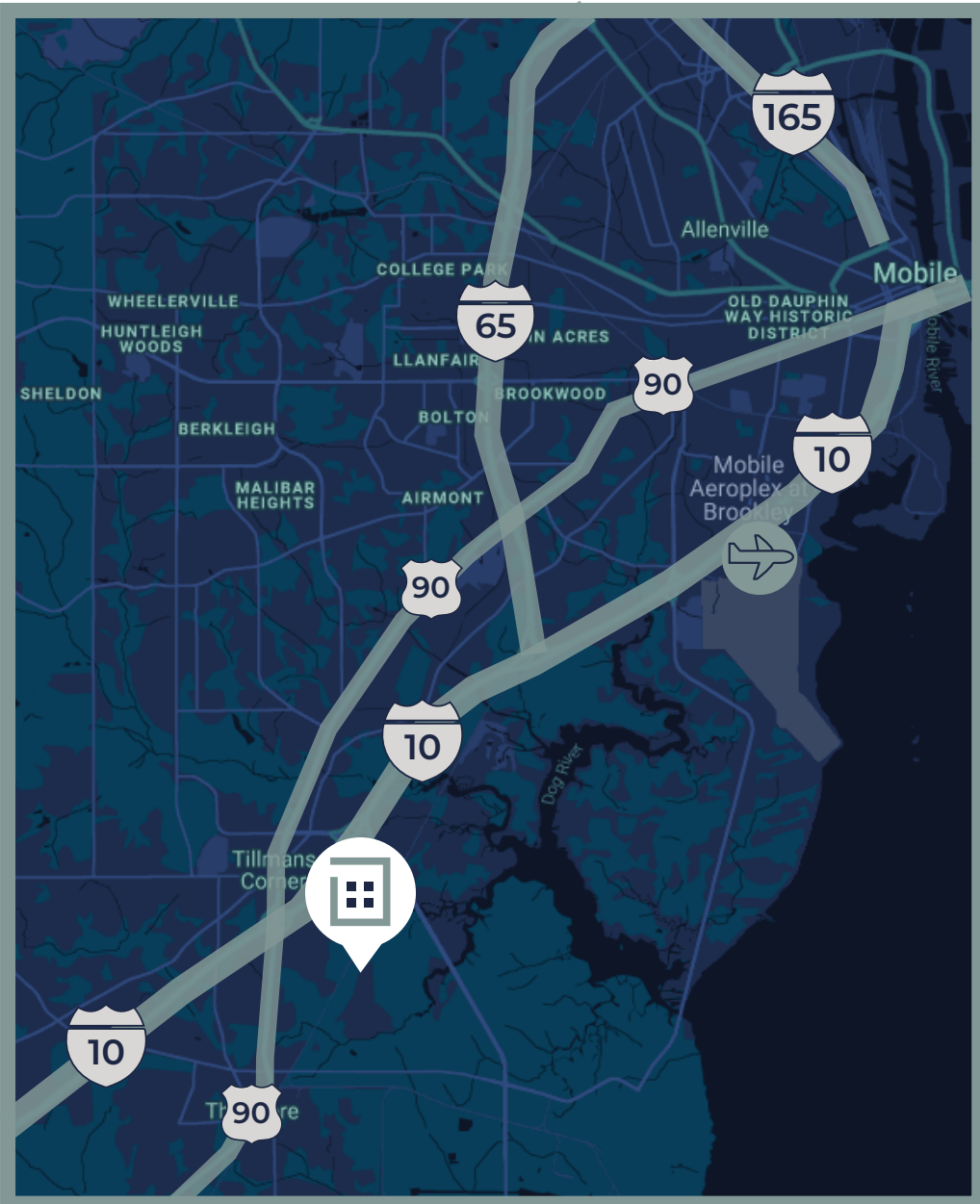
251.379.8285 | tgleason@cre-mobile.com



CRE
MOBILE
CRE-MOBILE.COM

FOR LEASE

5627 Todd Acres Drive | Mobile, AL



YARD SIZE

Up to 5± AC



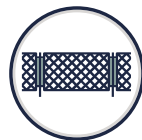
BEST USE

With over 190 parking spaces, it is an ideal space for a truck yard, container storage or lay-down yard



ZONING

I-1 : Light Industrial



SITE IMPROVEMENTS

Rocked, fenced & lighted yard: *site is currently undergoing improvements*



EASY ACCESS

Only 14 minutes (11.6 Miles) to APM Container Terminal



OFFICE SPACE AVAILABLE

Contact agent for more information



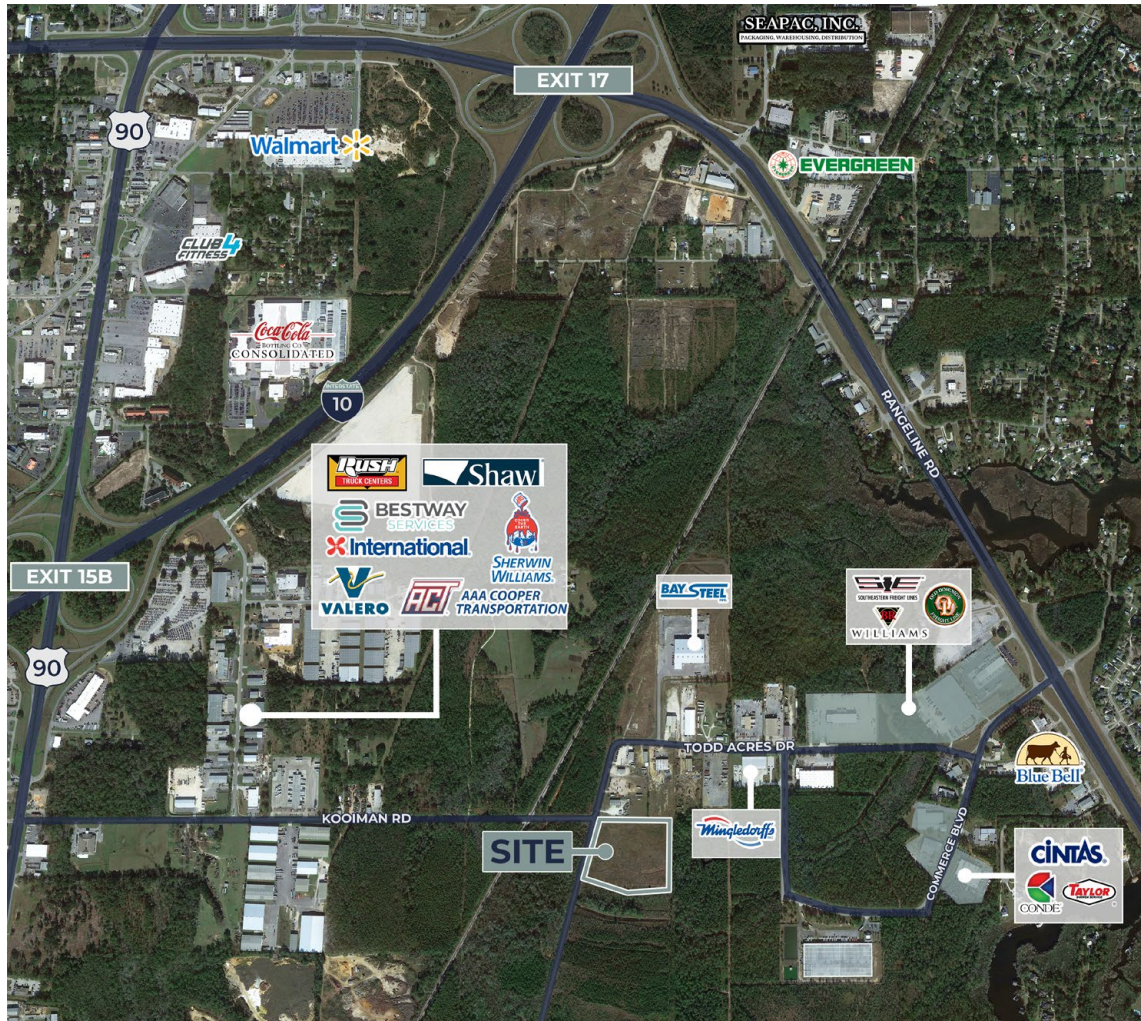
LEASE RATE

\$3,500/Acre/Month NNN

CLICK TO VIEW ON
GOOGLE EARTH

MISSISSIPPI





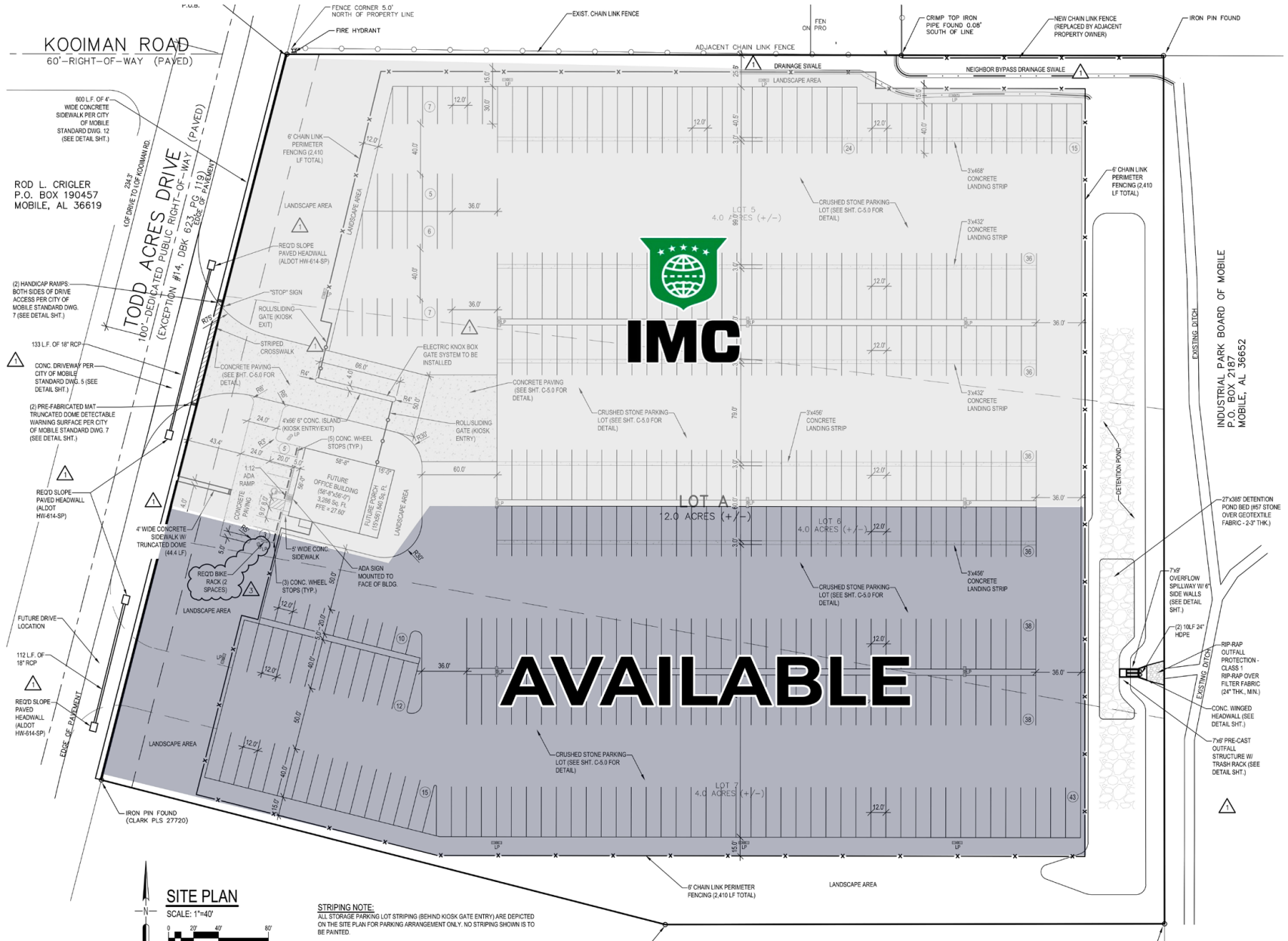
Central Location

Conveniently located less than 1.5 miles off the I-10 and US HWY 90 corridor (EXIT 15).



Desired Park

Located in a light industrial park with various other industrial businesses. Site Access to Todd Acres Drive Via Rangeline Rd. and Kooiman Rd.



ROD L. CRIGLER
P.O. BOX 190457
MOBILE, AL 36619

INDUSTRIAL PARK BOARD OF MOBILE
P.O. BOX 2187
MOBILE, AL 36652

SITE PLAN

SCALE: 1"=40'

STRIPING NOTE:
ALL STORAGE/PARKING LOT STRIPING (BEHIND KIOSK GATE ENTRY) ARE DEPICTED ON THE SITE PLAN FOR PARKING ARRANGEMENT ONLY. NO STRIPING SHOWN IS TO BE PAINTED.

AVAILABLE

