

427

STANLEY AVENUE
BROOKLYN | NEW YORK



INDUSTRIAL WAREHOUSE FOR LEASE

427

STANLEY AVENUE

BROOKLYN | NEW YORK

Located in East New York, Brooklyn's established industrial hub, **427 Stanley Avenue** offers approximately 4,000 SF of versatile warehouse/manufacturing space. The facility includes high-ceiling warehouse areas, multiple loading docks, and flexible interior layouts suitable for distribution, fabrication, or storage uses.

Positioned just off Linden Boulevard and moments from the Belt Parkway, the property provides efficient access to JFK Airport (15 min), Brooklyn Marine Terminal (20 min), and Manhattan (30 min). Served by Con Edison, NYCDEP water/sewer, and accessible via nearby MTA bus and subway lines, 427 Stanley Avenue offers both logistical convenience and strong regional connectivity for industrial operations.

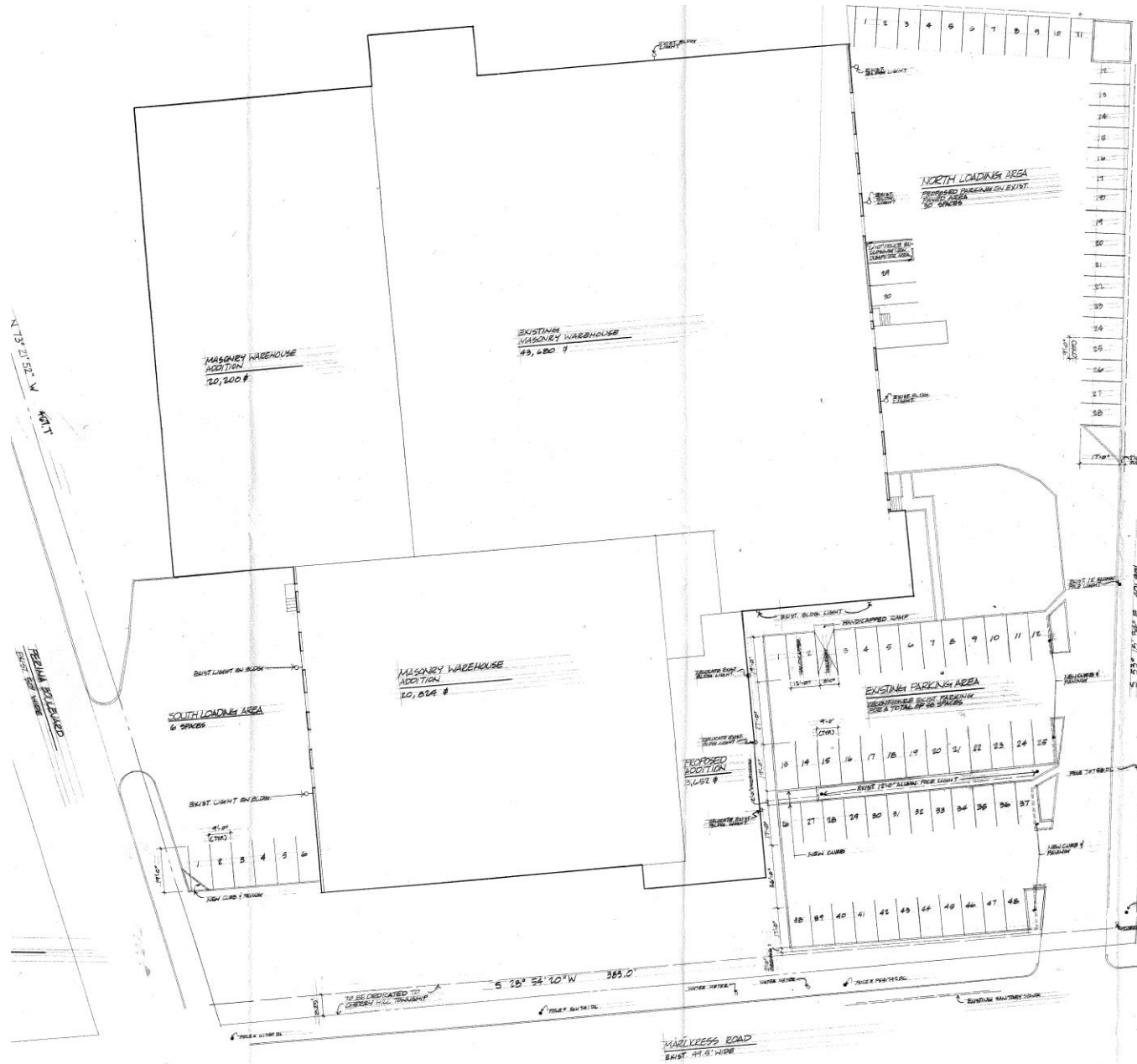
PROPERTY OVERVIEW

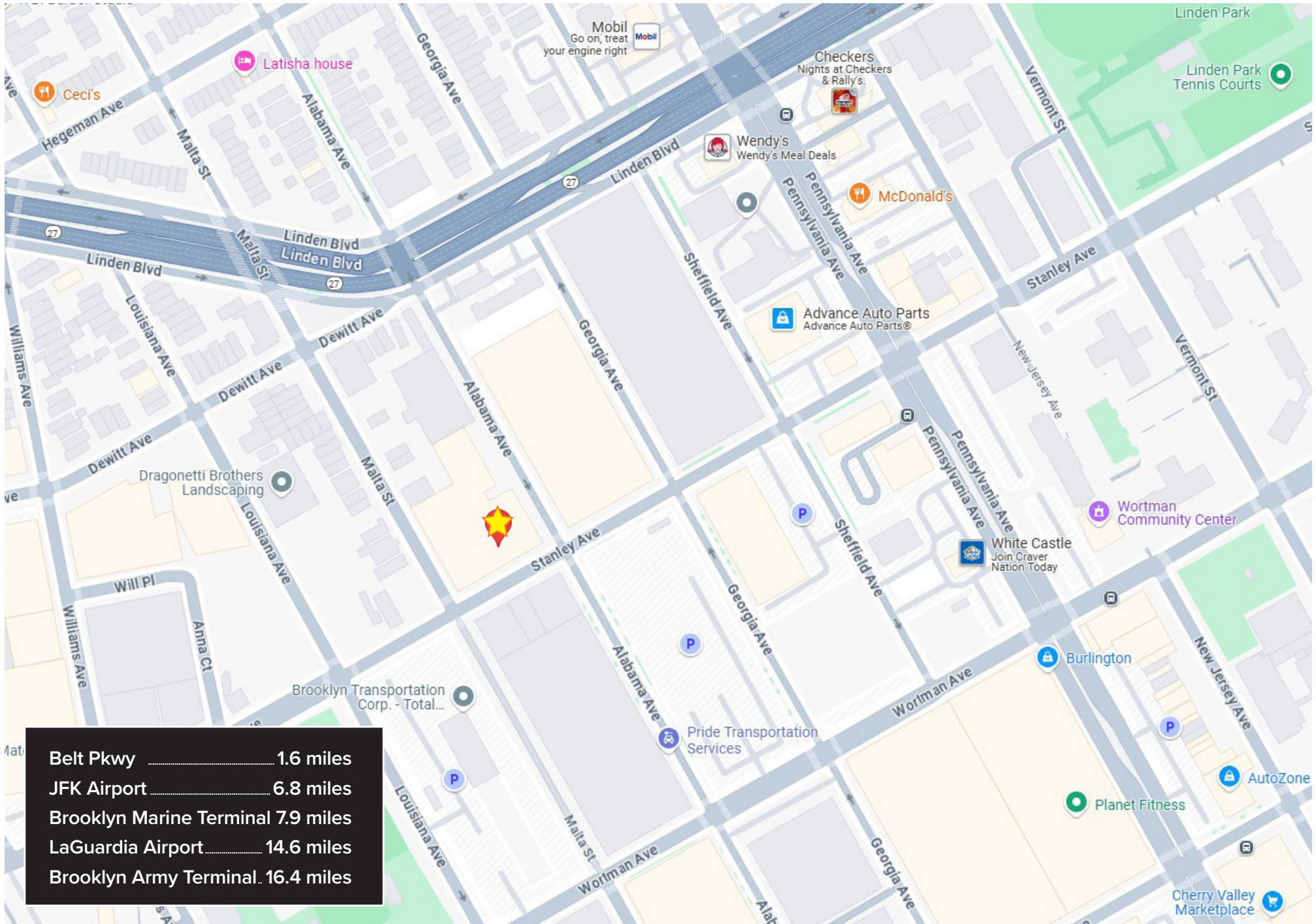
Property Type	Industrial Warehouse
Building Total SF	4,000 SF
Ceiling Heights	21'
Year Built	1967
Drive-Ins	1
Possession	Immediate

ASKING RENT: UPON REQUEST



BUILDING SITE PLAN:





Belt Pkwy	1.6 miles
JFK Airport	6.8 miles
Brooklyn Marine Terminal	7.9 miles
LaGuardia Airport	14.6 miles
Brooklyn Army Terminal	16.4 miles

FOR MORE INFORMATION,
PLEASE CONTACT:

JACK ZALTA

M: 347.256.9281

E: JZalta@Ksrny.com

EMIL SHABOT

M. 917.669.4493

E: EShabot@ksrny.com



1385 Broadway, 22nd Floor
New York, NY 10018
212.417.9217
ksrny.com

All information supplied in this marketing presentation and/or flyer is from sources deemed reliable and is furnished subject to errors, omissions, modifications, removal of listings from sale/lease and to any listing condition. Any square footage, dimensions, floor plans and/or technical data set forth are approximations and are subject to further elaboration/confirmation.