



**SWEARINGEN**

REALTY GROUP | EST 1972


**6514 Odana Road**

**1,396 SF OF OFFICE SPACE  
FOR SUBLEASE**

6514 Odana Rd, Madison, WI 53719



**Sublease Info:**

 \$21.00 Mod Gross



Suite 8: 1,396 RSF



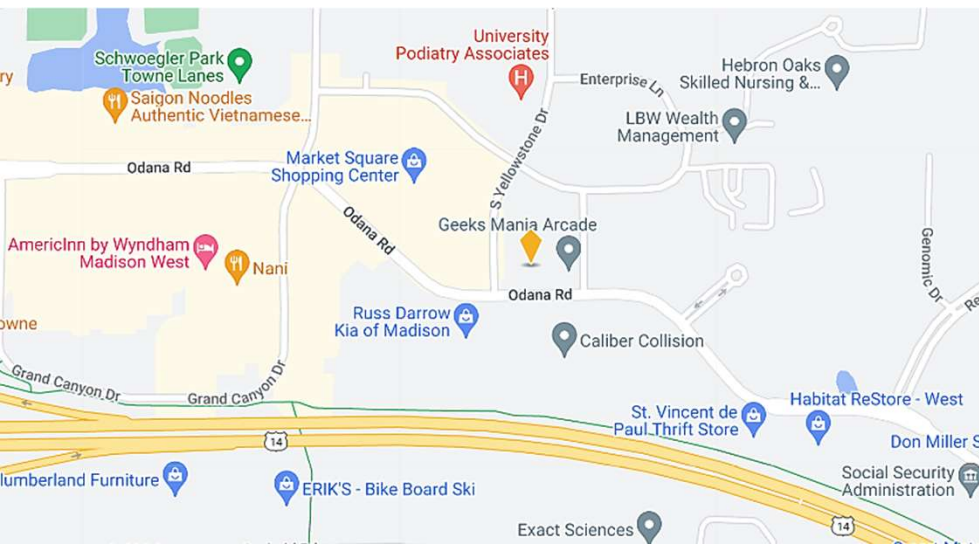
Immediate Availability



5.07/1,000 - Surface



Thru March 10, 2028



**For more information, contact:**

**JOE ARATA**

214-365-2730

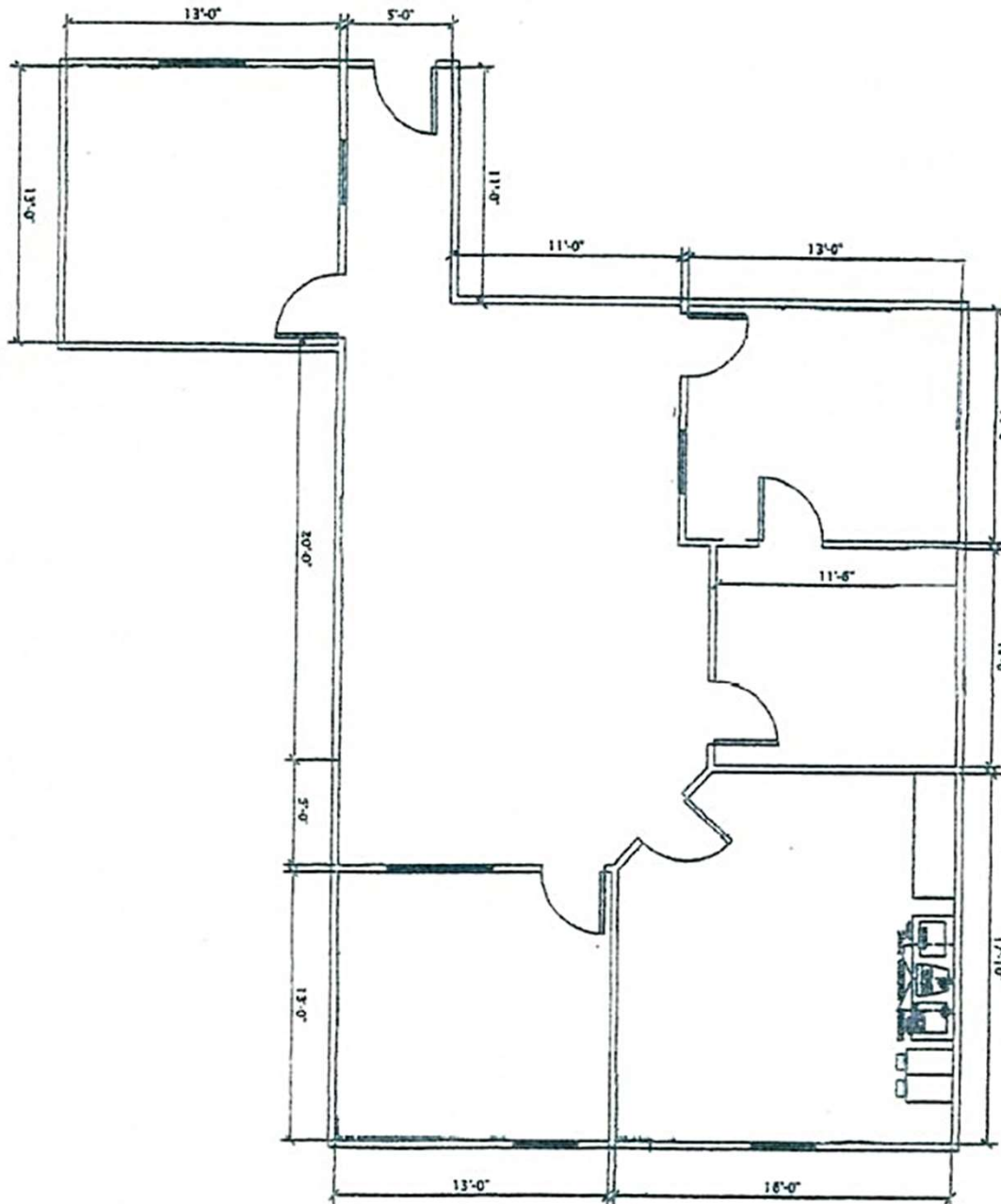
jarata@swearingen.com

www.swearingen.com

info@swearingen.com

# Space Highlights:

1,396 SF Office Space has 4 Offices and a Kitchenette. Space can be used as Retail or Office Use. Property is Located at the Corner of Odana Rd (19,752 VPD) & S Yellowstone Dr. Easy Access to West Town Mall and Major Roads such as Gammon Rd, Mineral Point Rd and the Beltline Highway.



*The information contained herein was obtained from sources we consider to be reliable. We cannot be responsible, however, for errors, omissions, prior sale, withdrawal from the market or change in price. We make no representation as to the environmental or structural condition of the property and recommend independent investigation by all parties.*

**For more information, contact:**

**JOE ARATA**

214-365-2730

jarata@swearingen.com

www.swearingen.com

info@swearingen.com