



RETAIL SPACE

153 WILSON AVENUE

Bushwick, Brooklyn, NY

350 SF STOREFRONT + FULL BASEMENT

153 Wilson Avenue

Between Hart and Suydam Streets

Available

Ground: 350 sf	Frontage: 10' along Wilson Ave	Possession: Immediate	Rent: Upon Request
Basement: 400 sf			

Comments

- All dry and non-vented food uses considered – great location for barber shop, small salon, non-vented coffee, tattoo shop and other small format uses
- White box condition with restroom and sink in place - former barber shop
- Area tenants include Alphaville, Sunday C&C Bakery, Carmenta's, Molasses Books, L Train Vintage, Lazy Suzy Café & Shop, Brooklyn Kava, Sofia, The Wheelhouse, Bushwick Medical, The Goal Barbership, Luzy's Unisex Beauty Salon, Brooklyn Pets, Leslie's Kitchen, and IC Brooklyn Café
- Centrally located between the Jefferson Street **L** and Knickerbocker Avenue **M** subway stations, and **B60** and **B38** bus lines along Wilson Avenue
- The surrounding neighborhood offers a great mix of restaurants, art, entertainment, and nightlife

By the Numbers

Retail Businesses

878

1 Mile Radius

Households

60,078

2025 - 1 Mile Radius

Household Income

\$101,034

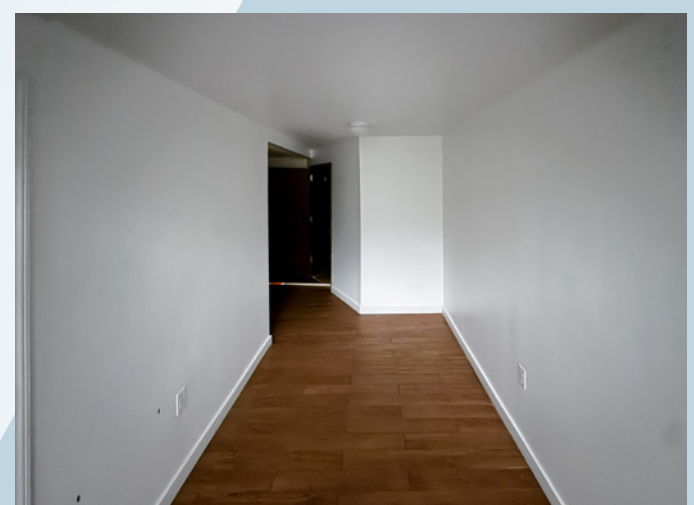
2025 Average

Subway Ridership

3,205,914

2024 Annual - Jefferson St & Knickerbock Av stations

Existing Conditions





For further information and/or inspection contact:

Mark Tergesen

Partner

Licensed Assoc. Real Estate Broker

212.400.9528

mt@absre.com

Quinn Reavy

Associate

Licensed Real Estate Salesperson

212-400-6064

qreavy@absre.com

ABS Partners Real Estate • 200 Park Avenue South, 10th Floor, New York, NY 10003 • 212.400.6060 • www.absre.com