

# OFFICE SPACE FOR LEASE



## MAITLAND GREEN II

2290 Lucien Way  
Maitland, FL 32751

Maitland Green II is a 4-story Class A office building with approximately 84,000 RSF and 4,308 RSF of available space.

Located in the highly desirable Maitland Center Office Park, this corporate building provides efficient office suites for all professional businesses.

**CLASS A  
OFFICE SPACE**

**Space Available  
4,308 SF**

[Virtual Tour](#)

[Drone Video](#)



For more information, contact:

**Damien Madsen**

**(407) 256.2844**

**DMadsen@harbertrealty.com**

For more information, contact:

**Josh Smith**

**(407) 377.4050**

**JSmith@harbertrealty.com**

Property Owned &  
Operated by:





## SPACE AVAILABLE

Suite	RSF
280	4,308 Available 7/1/26



## BUILDING FEATURES & AMENITIES

- 84,000 RSF Class A 4-Story Building
- On-Site Institutional Property Management
- 4/1000 Parking Ratio
- Brand New Fitness Facility Located in Adjacent Building
- **New Building Feature: Advanced and Targeted Cleanings of Common Area Spaces**
- Large Centrally Located Courtyard for Collaborative Distancing Area



For more information, contact:

**Damien Madsen**

**(407) 256.2844**

**DMadsen@harbertrealty.com**

**Josh Smith**

**(407) 377.4050**

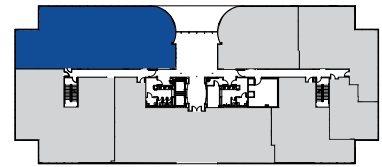
**JSmith@harbertrealty.com**

Property Owned &  
Operated by:

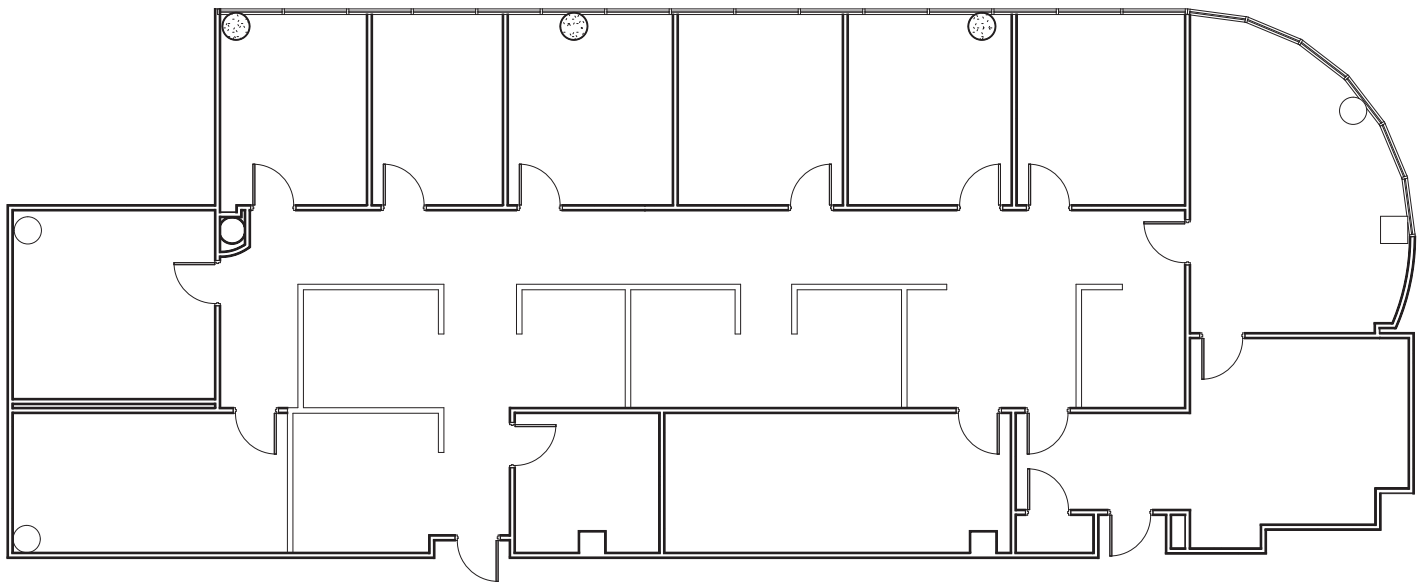


2nd  
Floor

Suite 280: 4,308 RSF

NORTH  
➤

Suite 280: 4,308 RSF



For more information, contact:

Damien Madsen

(407) 256.2844

DMadsen@harbertrealty.com

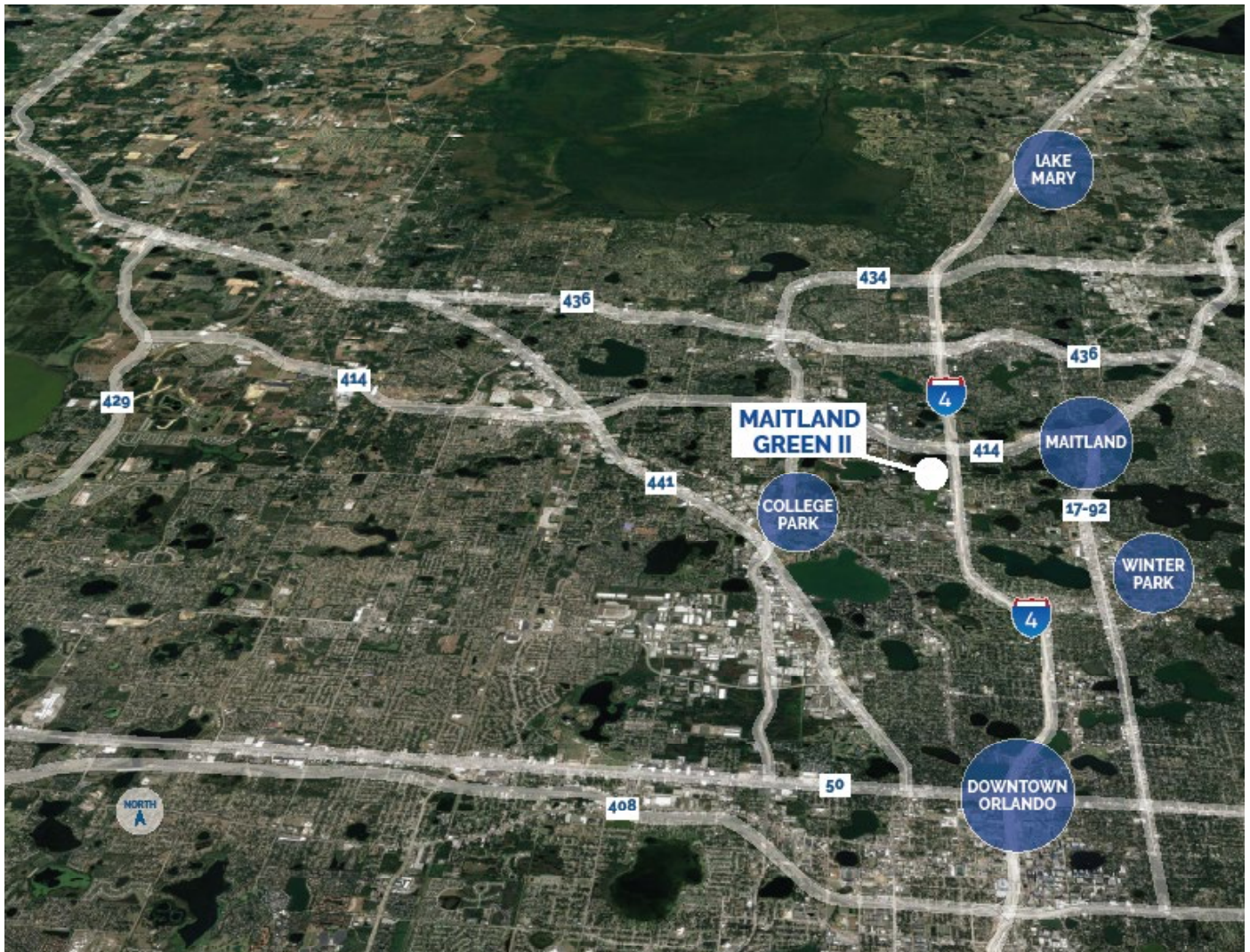
Josh Smith

(407) 377.4050

JSmith@harbertrealty.com

Property Owned &  
Operated by:





## LOCATION HIGHLIGHTS

- Well-positioned within Maitland Center Office Park, one of Orlando's largest office submarkets
- Conveniently less than a half mile from I-4 & providing easy access to Downtown Orlando
- Close to business hotels, restaurants, retail and the RDV Sportsplex
- Ideally located in Central Florida's top executive housing market & the following established neighborhoods
 

- Maitland:	3-Miles
- Winter Park:	5-Miles
- College Park:	7-Miles
- Downtown:	8-Miles
- Lake Mary:	12-Miles

For more information, contact:

**Damien Madsen**

**(407) 256.2844**

**DMadsen@harbertrealty.com**

**Josh Smith**

**(407) 377.4050**

**JSmith@harbertrealty.com**

Property Owned &  
Operated by:

