

BK:2022 PG:4-4

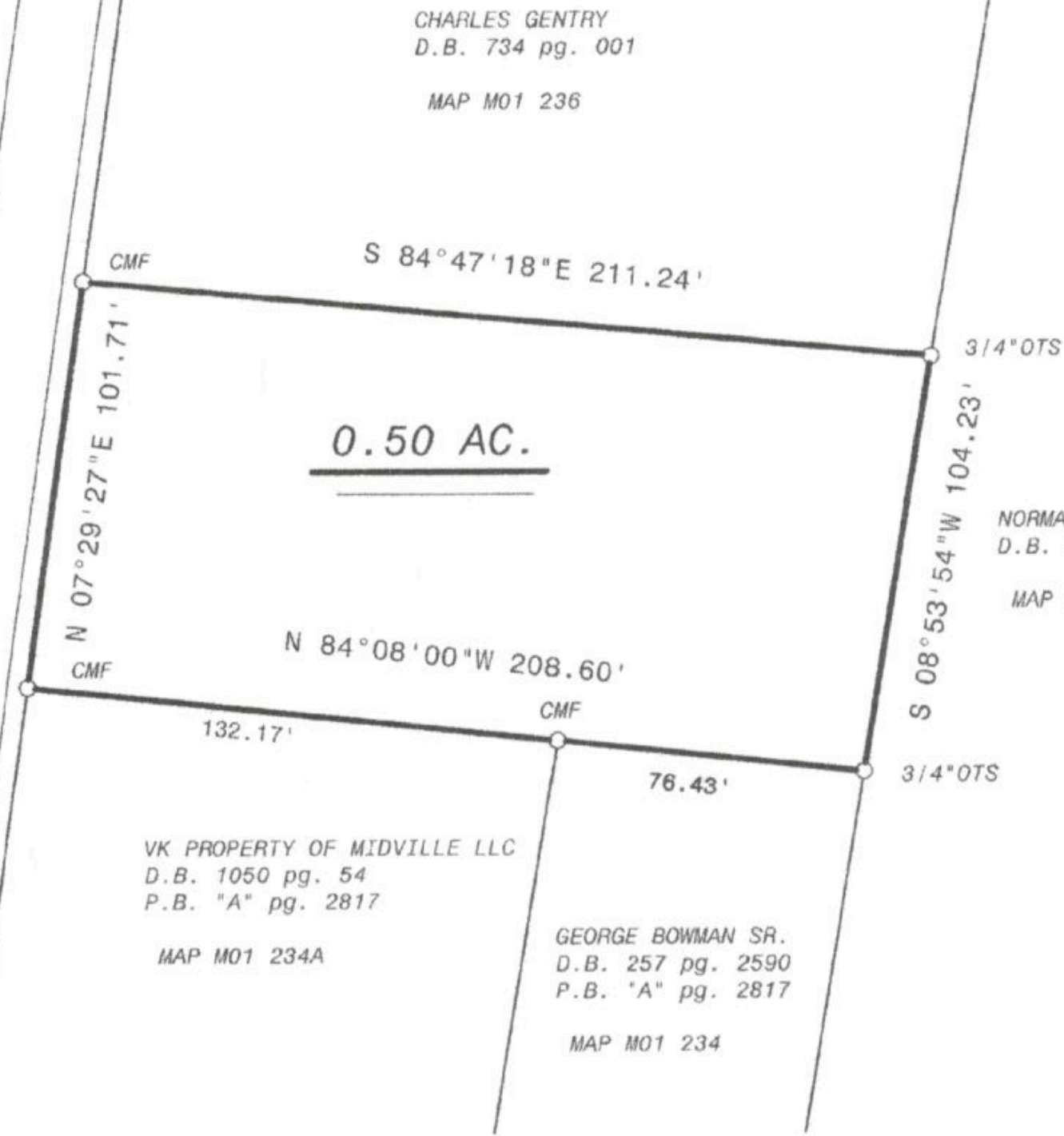
P2022000004

FILED IN OFFICE  
CLERK OF COURT  
01/07/2022 08:36 AM  
RADETA G. SMITH, CLERK  
SUPERIOR COURT  
BURKE COUNTY, GA

8103549677  
PARTICIPANT ID



JONES STREET STATE ROUTE 56



CHARLES GENTRY  
D.B. 734 pg. 001  
MAP M01 236

NORMA THRONE  
D.B. 333 pg. 37  
MAP M01 231

VK PROPERTY OF MIDVILLE LLC  
D.B. 1050 pg. 54  
P.B. "A" pg. 2817  
MAP M01 234A

GEORGE BOWMAN SR.  
D.B. 257 pg. 2590  
P.B. "A" pg. 2817  
MAP M01 234

**NOTES:**

1. THE PLAT CLOSURE OF THIS PLAT IS 1: 177,898'.
2. THE COMPASS RULE WAS USED TO ADJUST THIS PLAT.
3. THIS SURVEY WAS PERFORMED WITH A NIKON DTM 420 TOTAL STATION AND A 100' STEEL TAPE.
4. THIS SURVEY HAS BEEN CALCULATED FOR CLOSURE AND FOUND ACCURATE WITHIN 1: 32,314'.
5. THE FIELD ANGLE CLOSURE IS 0' 00'03" PER ANGLE.
6. THE CURRENT LAND OWNER IS CHARLES BRANNEN.
7. THE FIELD SURVEY WAS PERFORMED ON DEC. 15, 2018.

IN MY OPINION, THIS PLAT IS A CORRECT REPRESENTATION OF THE LAND PLATTED AND HAS BEEN PREPARED IN CONFORMITY WITH THE MINIMUM STANDARDS AND REQUIREMENTS OF LAW.

*SURVEY*  
for:

**CHARLES BRANNEN**

BEING IN THE CITY OF MIDVILLE  
PROPERTY LOCATED IN THE 73rd. G.M.D.  
**BURKE COUNTY, GEORGIA**

SCALE: 1" = 50'      DECEMBER 17, 2018

Prepared by

**TROY SMITH & ASSOCIATES**

13 HUNTINGTON PLACE  
WAYNESBORO, GA 30830  
PHONE: (706)554-7200

JOB # 18115

