

15000 HARPER AVENUE
DETROIT, MICHIGAN

INDUSTRIAL FOR SALE
6,551 Square Feet Available



**SIGNATURE
ASSOCIATES**
KNOW SIGNATURE | KNOW RESULTS



PROPERTY FEATURES

- 6,551 square feet available
- 851 square feet office
- 12' clear height
- (1) 10 x 10 grade level door
- Building with many new updates: electrical, plumbing, roof, new fence, and motorized security gate
- Located directly off I-94
- Sale Price: \$275,000 (\$41.98/sqft)



For more information, please contact:

JOE STACK
(248) 359 0615
jstack@signatureassociates.com

PAUL SAAD
(248) 359 0652
psaad@signatureassociates.com

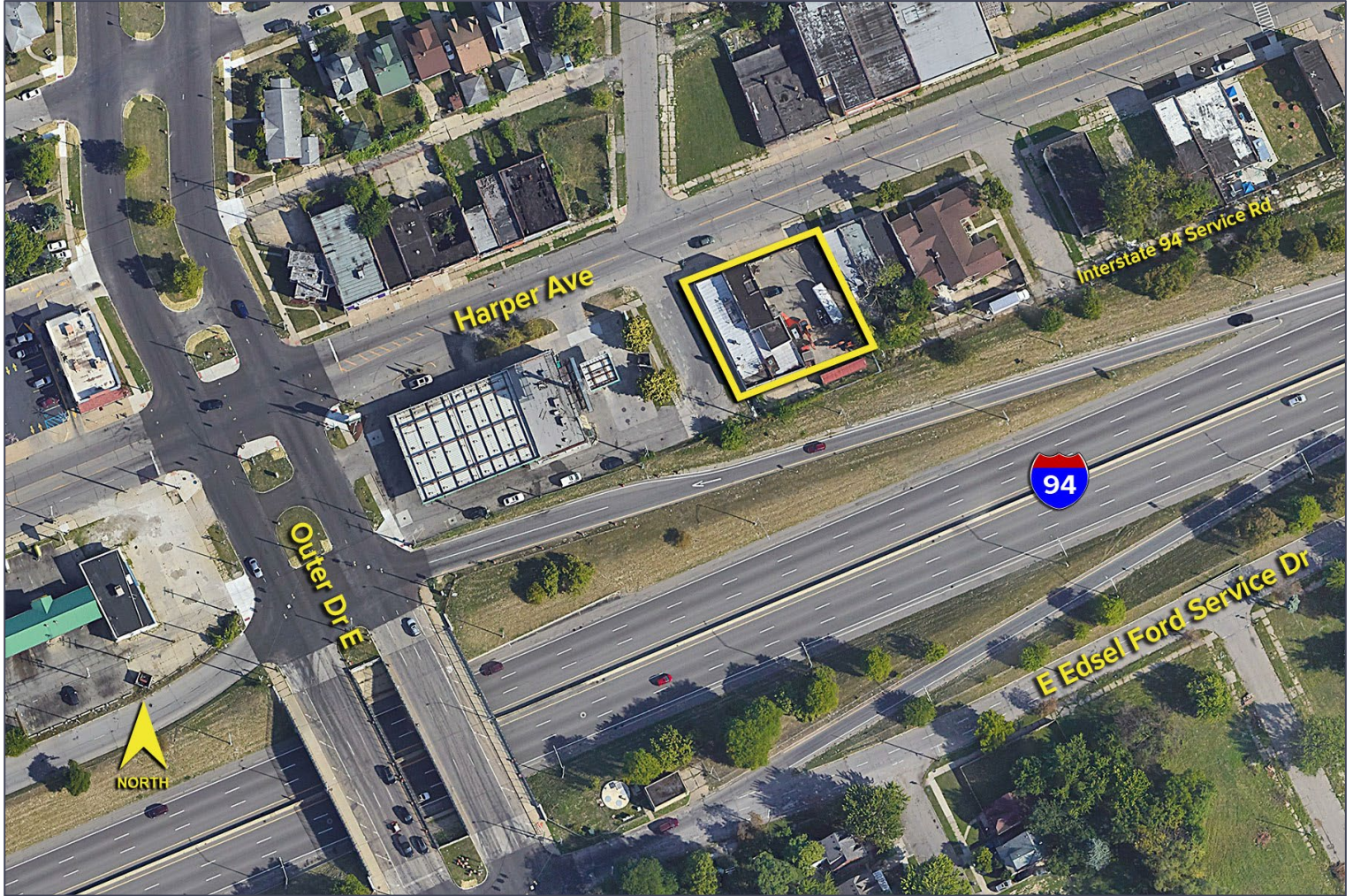
SIGNATURE ASSOCIATES
One Towne Square, Suite 1200
Southfield, MI 48076
www.signatureassociates.com

15000 Harper Avenue – Detroit, MI

Industrial For Sale

6,551
Square Feet
AVAILABLE

Aerial



For more information, please contact:

JOE STACK
(248) 359 0615
jstack@signatureassociates.com

PAUL SAAD
(248) 359 0652
psaad@signatureassociates.com

SIGNATURE ASSOCIATES
One Towne Square, Suite 1200
Southfield, MI 48076
www.signatureassociates.com