

# 1522

BROOKHOLLOW

# DRIVE

Santa Ana, CA



\$1.35 MG starting rate for 6 months  
for lease commencing on or  
before 12/31/24

**Brookhollow Business Park**  
**1 Suite for Lease**  
**Lease to Own Possible**

**±5,875 SF**

**NEWMARK**

## HIGHLIGHTS



±5,875  
Total SF  
Available



Part of  
Brookhollow  
Business  
Park



Freestanding,  
Single-Story  
Updated Office



Flexible  
Zoning—Office,  
Retail, Medical,  
Specialty,  
Religious, etc.



Positioned  
Directly off the  
55 Freeway



## AVAILABILITY

Suite	Available	Square Feet	Asking Market Rent
3 & 4	Vacant	5,875 SF	\$1.75 MG*

\* **\$1.35 MG starting rate for 6 months for lease commencing on or before 12/31/24**

### Suite 3 & 4: ±5,875 SF

- 5 private offices plus several smaller offices in back
- 1 conference room
- 1 kitchen + kitchenette
- 2 private restrooms
- Multiple (3) entries into suite
- Lots of windows/natural light
- Pond views from back offices
- Lease to own possible



# 1522

## BROOKHOLLOW

**Zen Garden**  
Meditation

**Concerts**  
By the Pond

- Vineyard
- Bocce Ball
- Putting Green
- Workout Stop
- Free Library
- Medical Facilities

**Lunch Spots**

Various picnic areas by the pond, wildlife, and several nearby food amenities

# BROOKHOLLOW BUSINESS PARK

Website Link: [www.brookhollowbusinesspark.com](http://www.brookhollowbusinesspark.com)

## About

Surrounded by greenery, water and wildlife, Brookhollow Business Park is the place to be! The entire park consists of 24 buildings, 31 acres of land, and over 400K SF of office, medical, food, and retail space. Whether you are looking for office space, retail or fulfillment spaces, you'll be sure to find what you need at our Brookhollow Business Park.

## Location Location Location

BHOPA is located in Santa Ana, part of the bustling Orange County area, known for its strong business environment and skilled workforce. Next door is the Irvine Business Complex area known for its diverse mix of businesses, numerous dining options, shopping centers, fitness facilities, and parks.

**2.0**  
MILES

The District @ Tustin Legacy

**2.8**  
MILES

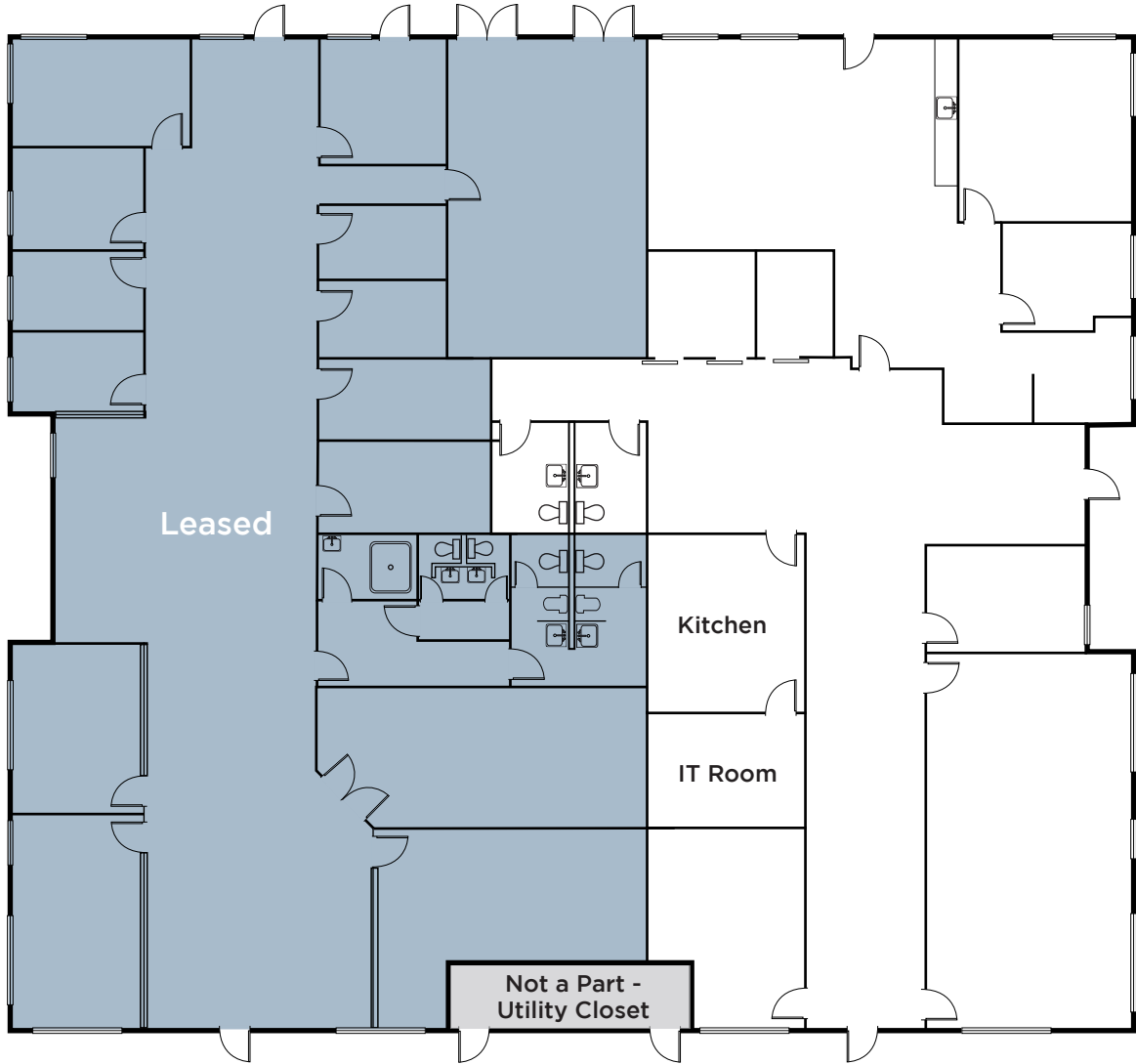
John Wayne Airport

**3.4**  
MILES

South Coast Plaza



# ±5,875 SF FLOOR PLAN



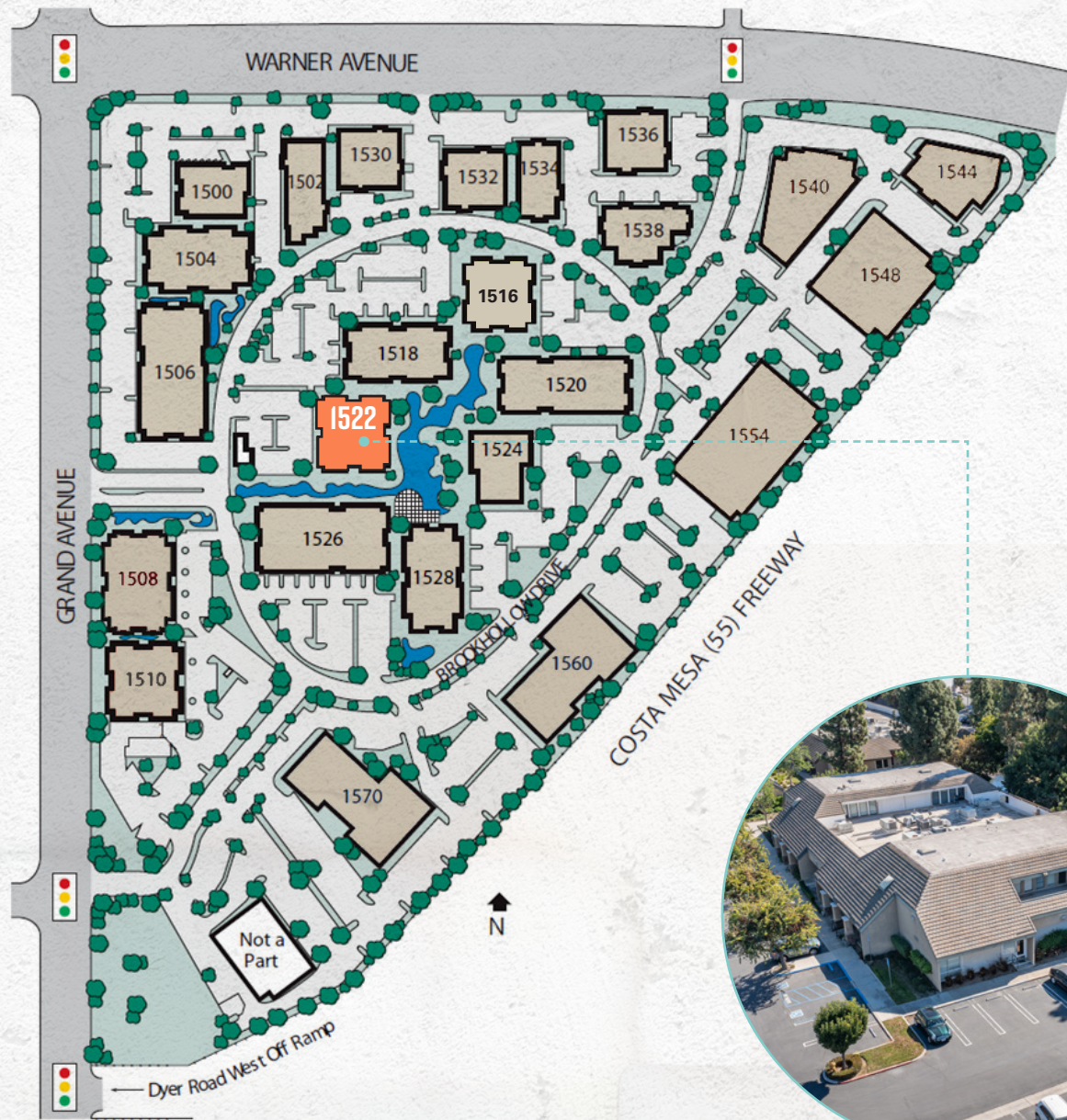
Suite 3 & 4  
±5,875 SF

1522

BROOKHOLLOW



# SITE PLAN

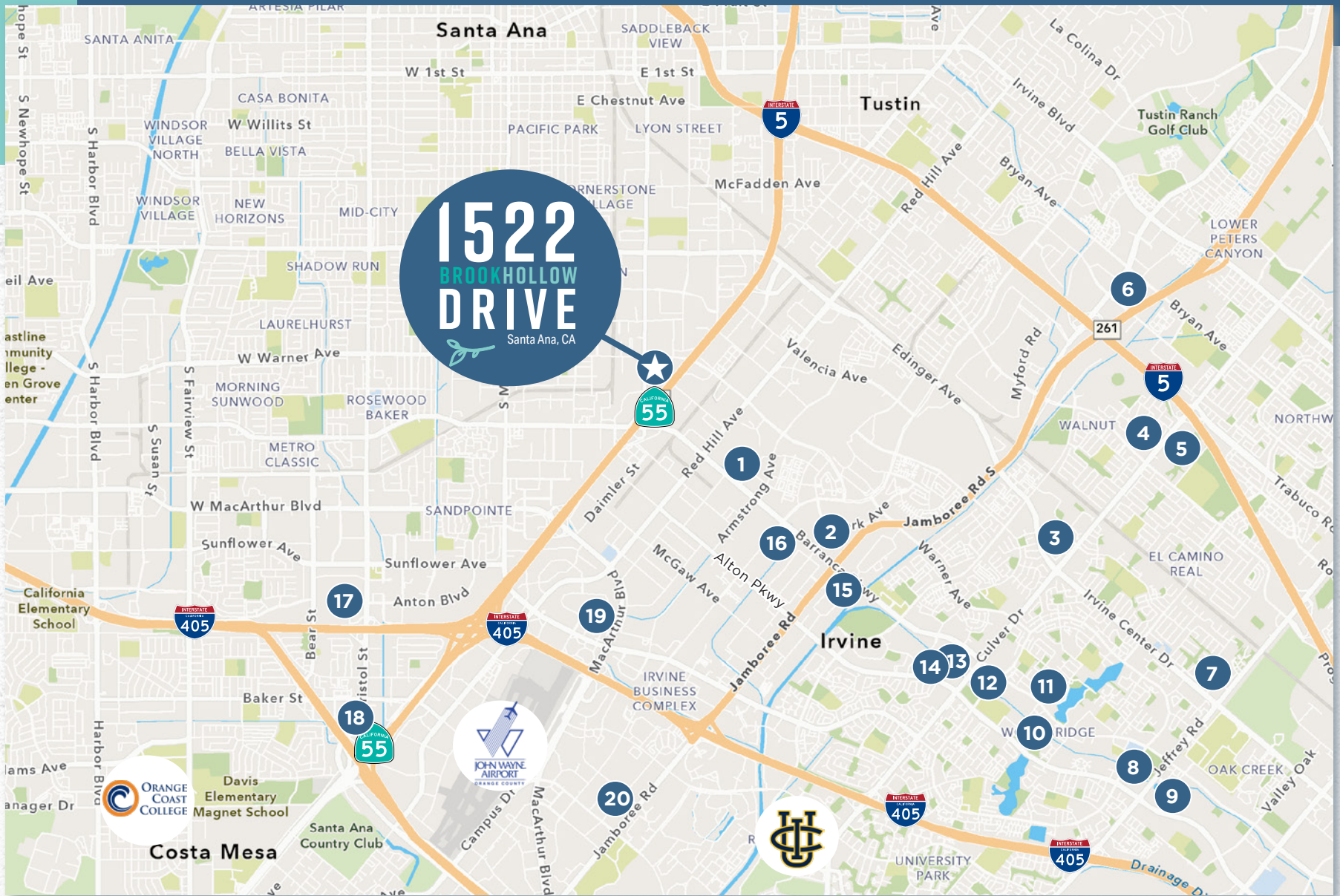


# 1522

## BROOKHOLLOW



Vibrant business district that offers convenient access to nearby amenities



- |                                  |                          |                             |                       |                        |
|----------------------------------|--------------------------|-----------------------------|-----------------------|------------------------|
| 1. Mess Hall at FLIGHT           | 5. Heritage Square       | 9. Oak Creek Village Center | 13. Crossroads Center | 17. South Coast Plaza  |
| 2. The District at Tustin Legacy | 6. The Market Place      | 10. Woodbridge Square       | 14. Westpark Plaza    | 18. The Lab/Camp       |
| 3. Culver Plaza                  | 7. Irvine Village Center | 11. Lakeside Plaza          | 15. Corporate Plaza   | 19. The Square         |
| 4. Walnut Village                | 8. Alton Square          | 12. Centerstone Plaza       | 16. Von Karman Plaza  | 20. Jamboree Promenade |
- + MANY MORE**



**1522**  
BROOKHOLLOW  
**DRIVE**  
Santa Ana, CA

**NEWMARK**



**Troy Wooton**  
Senior Managing Director  
t 949-608-2020  
troy.wooton@nmrk.com  
CA RE Lic. #01377431



**Zac Fielder**  
Director  
t 949-608-2121  
zac.fielder@nmrk.com  
CA RE Lic. #01989549

CORPORATE LICENSE #01355491

The distributor of this communication is performing acts for which a real estate license is required. The information contained herein has been obtained from sources deemed reliable but has not been verified and no guarantee, warranty or representation, either express or implied, is made with respect to such information. Terms of sale or lease and availability are subject to change or withdrawal without notice.