

## SUMMARY

## LOCATION AERIAL

## IMAGES

## DEMOGRAPHICS

## FOR SALE OR LEASE

### PROPERTY OVERVIEW

The all-brick improved building with minimum aluminum siding, all appear to be in average condition. The roof, HVAC and mechanical are new and in excellent condition. Four (4) parking places in front and with access through Grace Community Bible Church, ample parking in the rear of the property can be provided.

### PROPERTY INFORMATION

- Building Size: 1,460 SF
- Land Size: 0.17 Acres / 7,537 SF
- Zoning: R1B / CPZ
- Parcel: 36351 Jefferson Parish Armbruster Subdivision Lot B, Square 9
- Flood Zone: X

### SALE PRICE

- \$271,000

### LEASE PRICE

- \$1,200 Per Month

### LOCATION HIGHLIGHTS

- Located in River Ridge
- Nearby Little Farms Avenue which connects directly to Airline Highway
- Between John Curtis Upper and Lower Schools
- Nearby Retail include: Breaux Mart, Planet Fitness, and Dollar General

### TRAFFIC COUNT (ADT 2024)

- On Jefferson Highway, at site: 34,602



SUMMARY

LOCATION AERIAL

IMAGES

DEMOGRAPHICS



SUMMARY

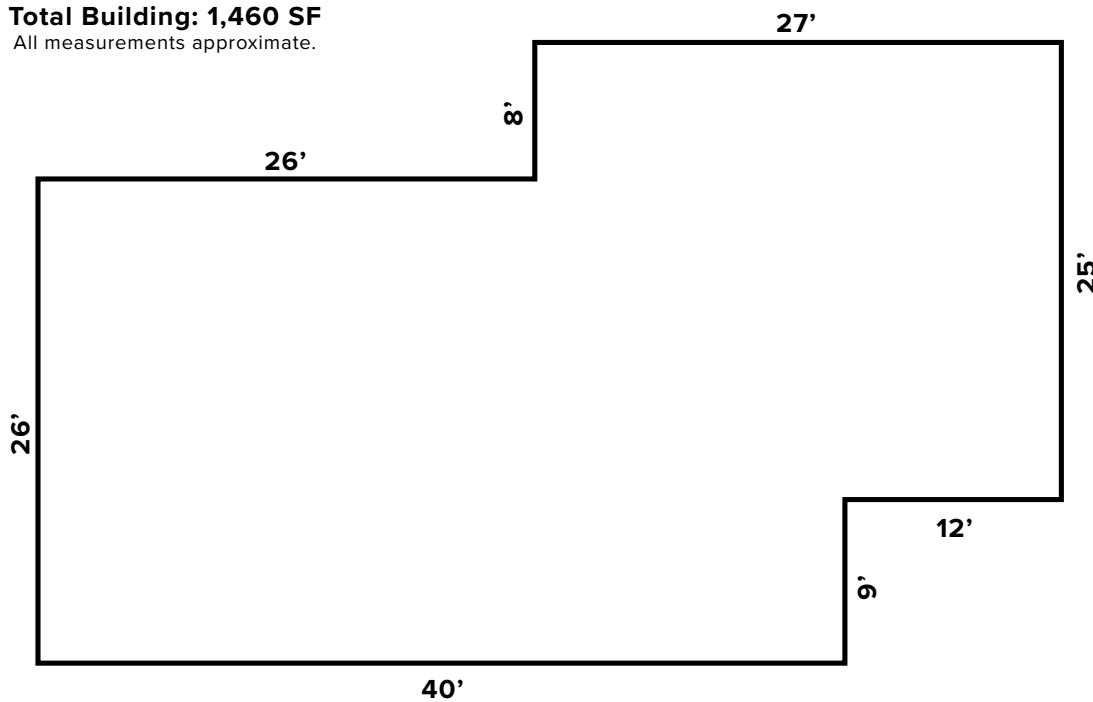
LOCATION AERIAL

IMAGES

DEMOGRAPHICS

10412 Jefferson Hwy.  
River Ridge, LA 70123

Total Building: 1,460 SF  
All measurements approximate.



Jefferson Highway



SUMMARY

LOCATION AERIAL

IMAGES

DEMOGRAPHICS

## 2025 DEMOGRAPHICS



POPULATION

1 MILE	3 MILE	5 MILE
10,852	75,680	209,615



AVG. HH INCOME

1 MILE	3 MILE	5 MILE
\$102,258	\$98,794	\$99,344



HOUSEHOLDS

1 MILE	3 MILE	5 MILE
4,869	32,623	88,570

