

Pine Island Rd.

N. Tamiami Trail



RV Kountry Business and Real Estate

1660 N. Tamiami Trail, North Fort Myers, FL 33903



PREMIER
COMMERCIAL

4850 Tamiami Trail N, Ste 200
Naples, FL 34103
premcomm.com
floridacommercialadvisors.com

DOUGALL MCCORKLE, MBA
Sales Associate
239.860.3368
dougall@premiermail.net

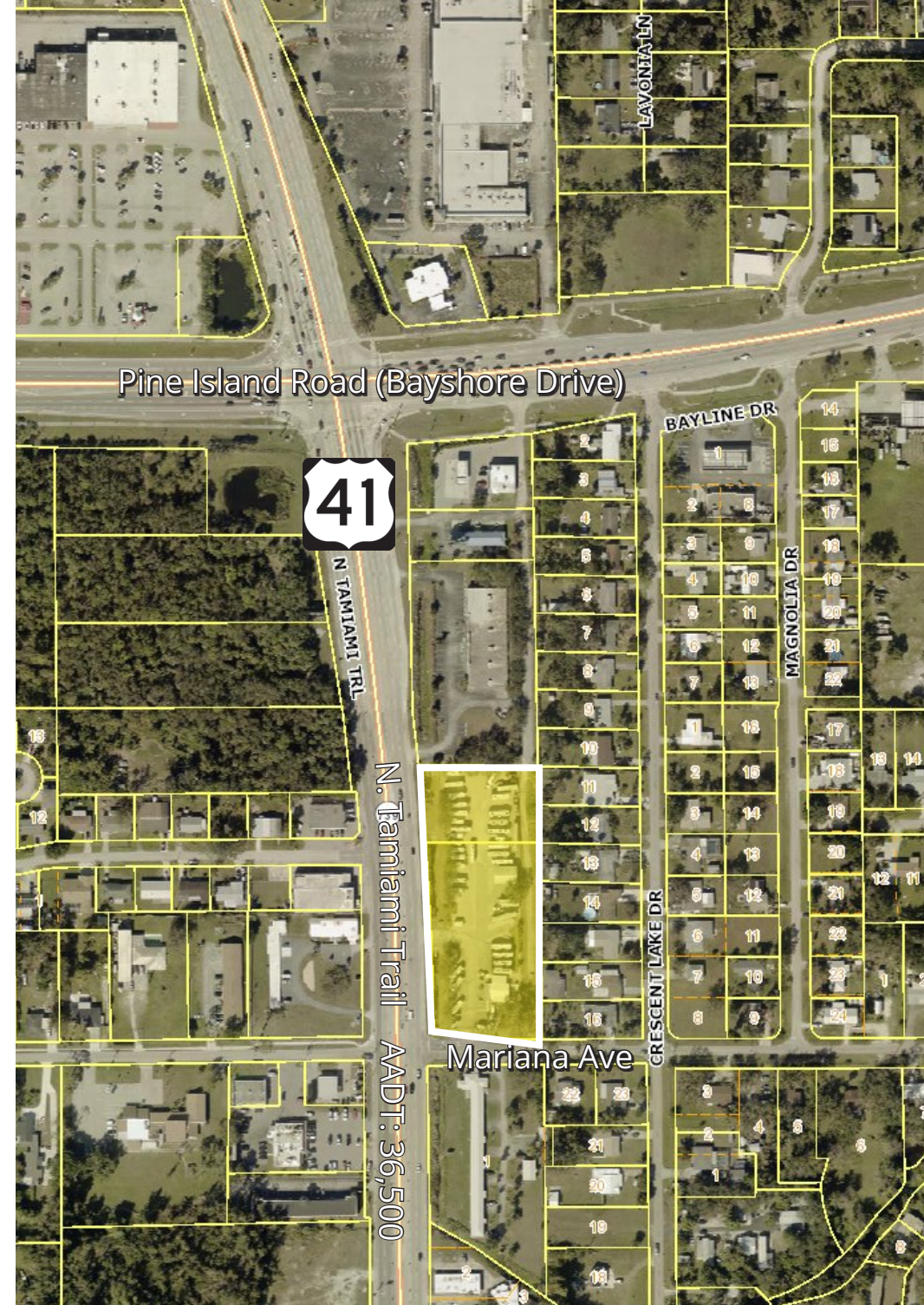
DARREN MCCORKLE
Broker Associate
239.207.8668
darren@premiermail.net

Property Overview

RV Kountry, Southwest Florida's oldest and longest-running used and consignment RV dealership is now available for sale, inclusive of business and real estate. Highlights include:

- » Founded in 1981 with a long track record of success and all systems in place for a seamless transition to new ownership.
- » Located directly on US41 just south of Pine Island Rd., giving it exceptional regional access.
- » 1.61 acres which is suitable to park approximately 85 units.
- » Flexible C-1 zoning gives the site a wide variety of potential uses, making it an excellent redevelopment opportunity for future flexibility and property value.
- » The site benefits from excellent access, visibility, and layout.
- » The cyclical RV market is currently at the bottom of its cycle, the perfect time to buy to take advantage of the next peak!
- » Most units are on consignment, but the business does keep a small inventory of units, which would be in addition to the purchase price.
- » This opportunity, inclusive of business and real estate, is offered at \$2,495,000

PLEASE DO NOT CONTACT EMPLOYEES OR VENDORS DIRECTLY.





Average Owner's Benefit

Upcycle Year	\$1.4M
Downcycle Year	Break Even
Six Year Average	\$700K



Subject Site

Cape Coral

Caloosahatchee River

Fort Myers

This document has been prepared by Premier Commercial, Inc. ("Broker") for advertising and general information only. Broker makes no guarantees, representations or warranties of any kind, expressed or implied, regarding the information including, but not limited to, warranties of content, accuracy and reliability. Any interested party should undertake their own inquiries as to the accuracy of the information. Broker excludes unequivocally all inferred or implied terms, conditions and warranties arising out of this document and excludes all liability for loss and damages arising there from. This publication is the copyrighted property of Broker ©2026. All rights reserved.

Google Earth

Image © 2026 Vexcel Imaging US, Inc.

