



GOLD AND COMPANY, LLC

WWW.GOLDCOMMERCIAL.NET

Commercial Real Estate in the Baltimore Metropolitan Area



1001 N. Rose St. Baltimore, MD 21205

Gold And Company, LLC

5601 Newbury St.
Baltimore, MD 21209

For More Information:

Jim Chivers
Sr. Vice President
443.928.7522 cell
jim@goldcommercial.net

Will McCullough, SIOR
Vice President
410.292.2985 cell
will@goldcommercial.net

www.goldcommercial.net

- +/- 12,000 sf Warehouse Available **FOR SALE**
- +/- 14' Clear Height
- **I-1 Zoning—Industrial Baltimore City**
- **0.68 Acre**
- **Hub and Enterprise Zone**
- **Dock and Drive-In Door**
- **Fenced In Parking Area**
- **East Baltimore Submarket**
- **Call For More Information**

This property offering is subject to change without notice. All information is deemed reliable but not guaranteed.



Gold And Company

Commercial Real Estate in the Baltimore Metropolitan Area

1001 N. Rose St. Baltimore, MD 21205

Aerials



Jim Chivers / Will McCullough
Gold And Company, LLC
5601 Newbury St.
Baltimore, MD 21209

410.578.1300 (Office)

www.goldcommercial.net

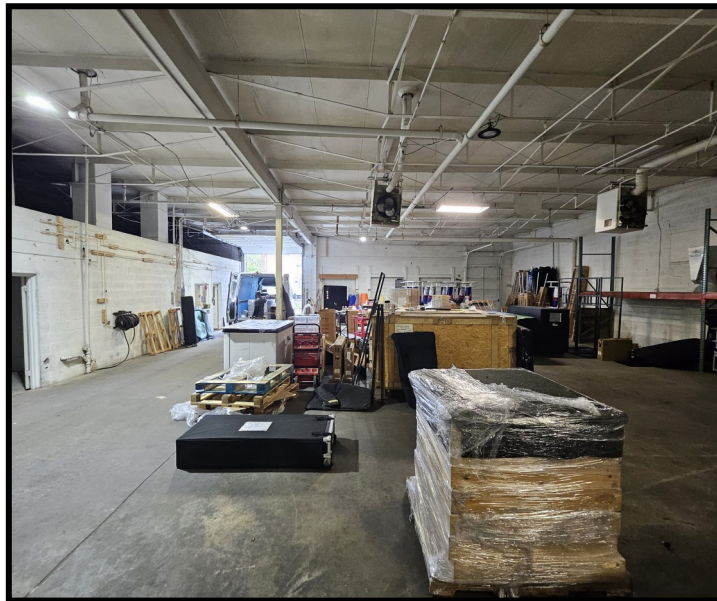


Gold And Company

Commercial Real Estate in the Baltimore Metropolitan Area

1001 N. Rose St. Baltimore, MD 21205

Pictures



Jim Chivers / Will McCullough
Gold And Company, LLC
5601 Newbury St.
Baltimore, MD 21209

410.578.1300 (Office)

www.goldcommercial.net

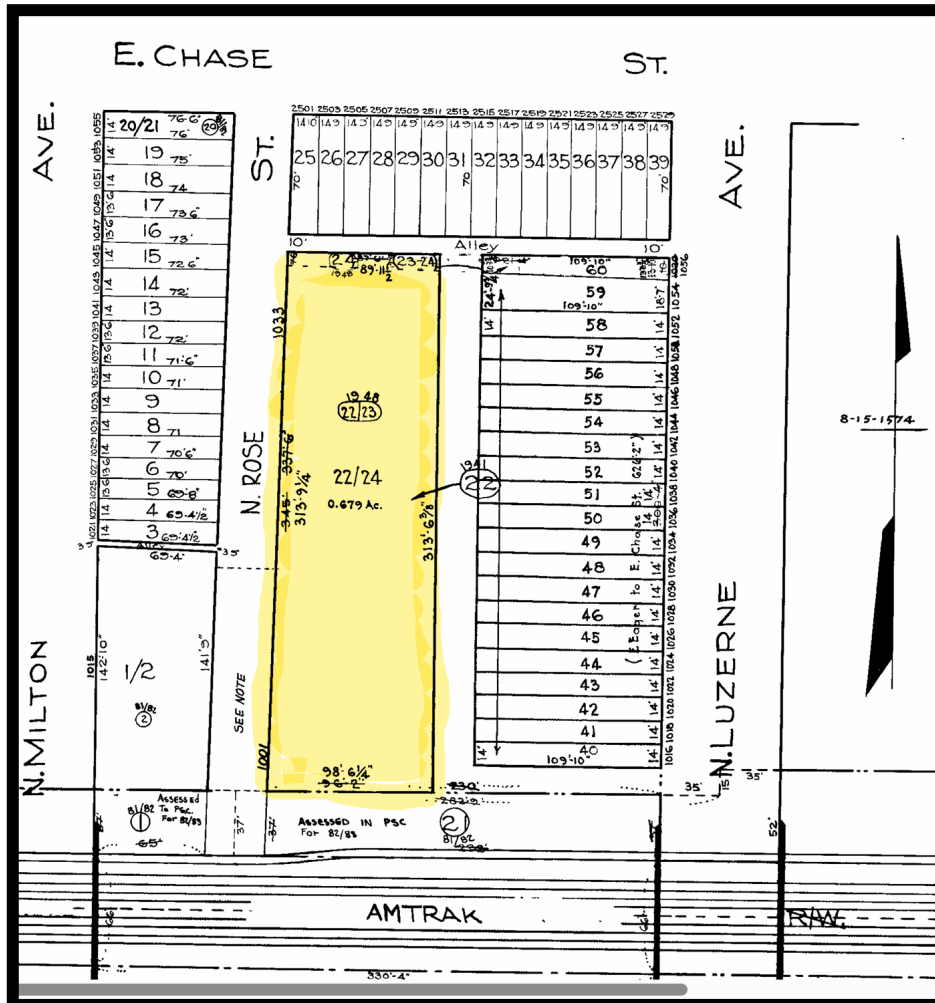


Gold And Company

Commercial Real Estate in the Baltimore Metropolitan Area

1001 N. Rose St. Baltimore, MD 21205

Block Map



Jim Chivers / Will McCullough
Gold And Company, LLC
5601 Newbury St.
Baltimore, MD 21209

410.578.1300 (Office)
www.goldcommercial.net

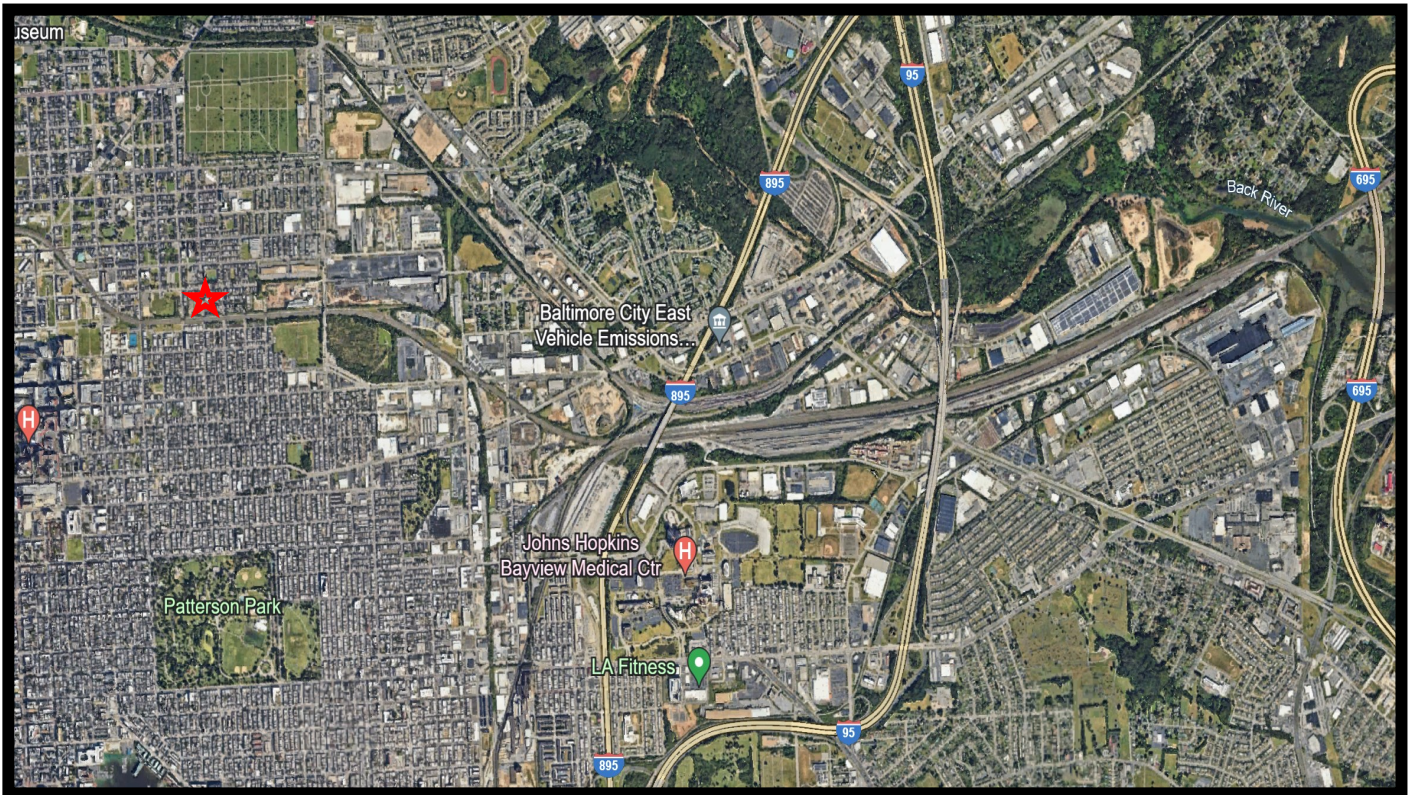


Gold And Company

Commercial Real Estate in the Baltimore Metropolitan Area

1001 N. Rose St. Baltimore, MD 21205

Location Map



Jim Chivers / Will McCullough
Gold And Company, LLC
5601 Newbury St.
Baltimore, MD 21209

410.578.1300 (Office)

www.goldcommercial.net