

# 17885 Southeast 82nd Drive

GLADSTONE, OR 97027

Tyler Dean  
503.972.7278  
tyler@macadamforbes.com  
Licensed in OR

2 Centerpointe Drive, Suite 500 | Lake Oswego, OR 97035 | [WWW.MACADAMFORBES.COM](http://WWW.MACADAMFORBES.COM) | 503.227.2500

All of the information contained herein was obtained either from the owner or other parties we consider reliable. We have no reason to doubt its accuracy, however we do not guarantee it.

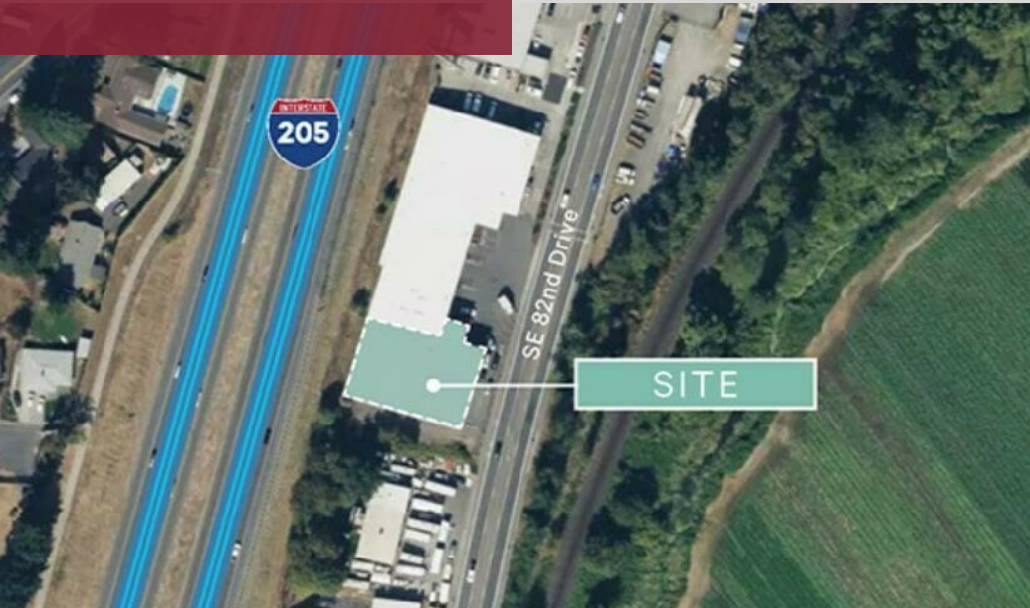
## FOR LEASE

**MACADAM  
FORBES**  
COMMERCIAL REAL ESTATE SERVICES



# FOR LEASE

17885 Southeast 82nd Drive, Gladstone, OR 97027



## PROPERTY DESCRIPTION

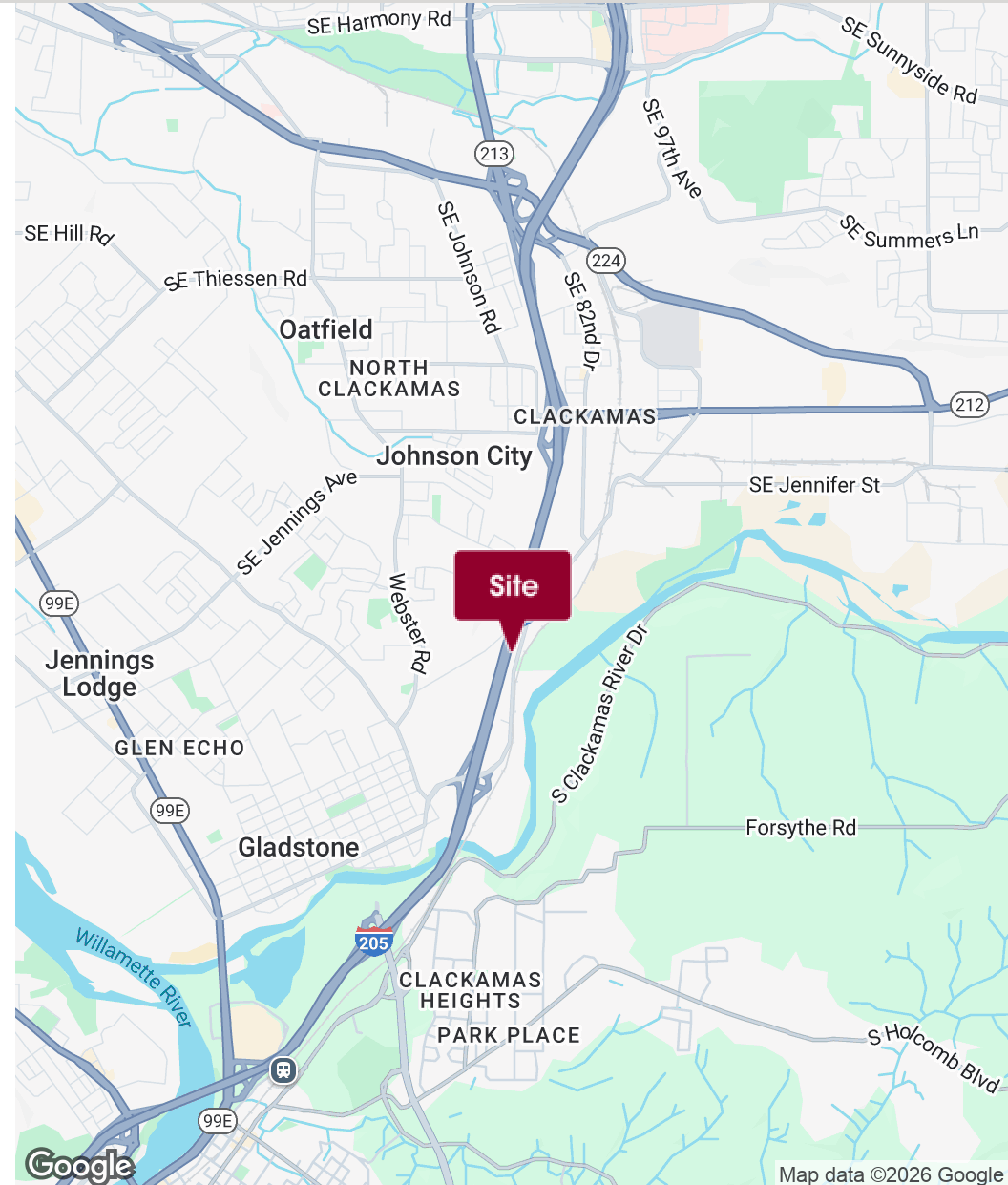
Clean warehouse space with a small office and dual frontage on 82nd Drive and I-205, offering excellent visibility and immediate freeway access. Located in the City of Gladstone within Clackamas County.

## PROPERTY HIGHLIGHTS

- 16-18' Clear Height
- 15'x18' Grade Door
- Power: 3-Phase 200 amps
- NNN Estimated at \$1,260/mo (\$0.14)

## OFFERING SUMMARY

Lease Rate:	\$7,200.00 per month (NNN)
Available SF:	9,100 SF
Office Size:	500 SF



**Tyler Dean**  
503.972.7278  
tyler@macadamforbes.com  
Licensed in OR

All of the information contained herein was obtained either from the owner or other parties we consider reliable. We have no reason to doubt its accuracy, however we do not guarantee it.

MACADAMFORBES.COM | 503.227.2500