

PRIME OFFICE / WAREHOUSE SPACE



Property Features

- Available: Suite 750: 4141 SF
 - Office: 2,317 SF
 - Warehouse: 1,824 SF
- Drive-in Doors (2) - 10x10
- Ample Parking
- Within a Well Established Business Park
- Located 1/2 Mile from Rt.82 / I-77
- \$8.50 psf NNN



For more information:

Noah Broadbent
+1 440 708 8578
noah.broadbent@naipvc.com

Joe Hauman
+1 440 591 3723
joe.hauman@naipvc.com

Jeffrey Calig, CCIM
+1 216 455 0910
jcalig@naipvc.com

FOR LEASE

Interior Photos



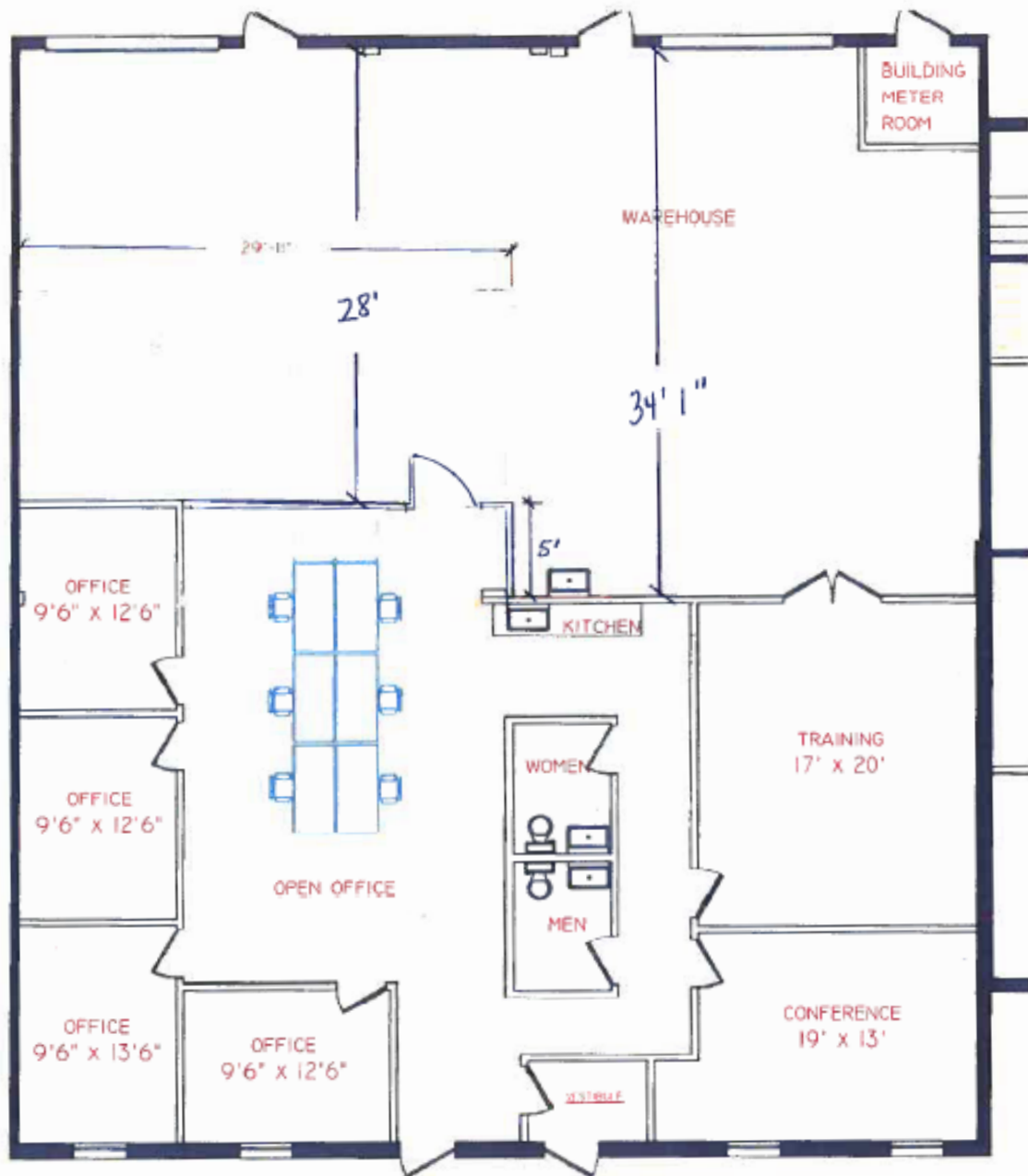
Noah Broadbent
+1 440 708 8578
noah.broadbent@naipvc.com

Joe Hauman
+1 440 591 3723
joe.hauman@naipvc.com

Jeffrey Calig, CCIM
+1 216 455 0910
jcalig@naipvc.com

FOR LEASE

Floor Plan



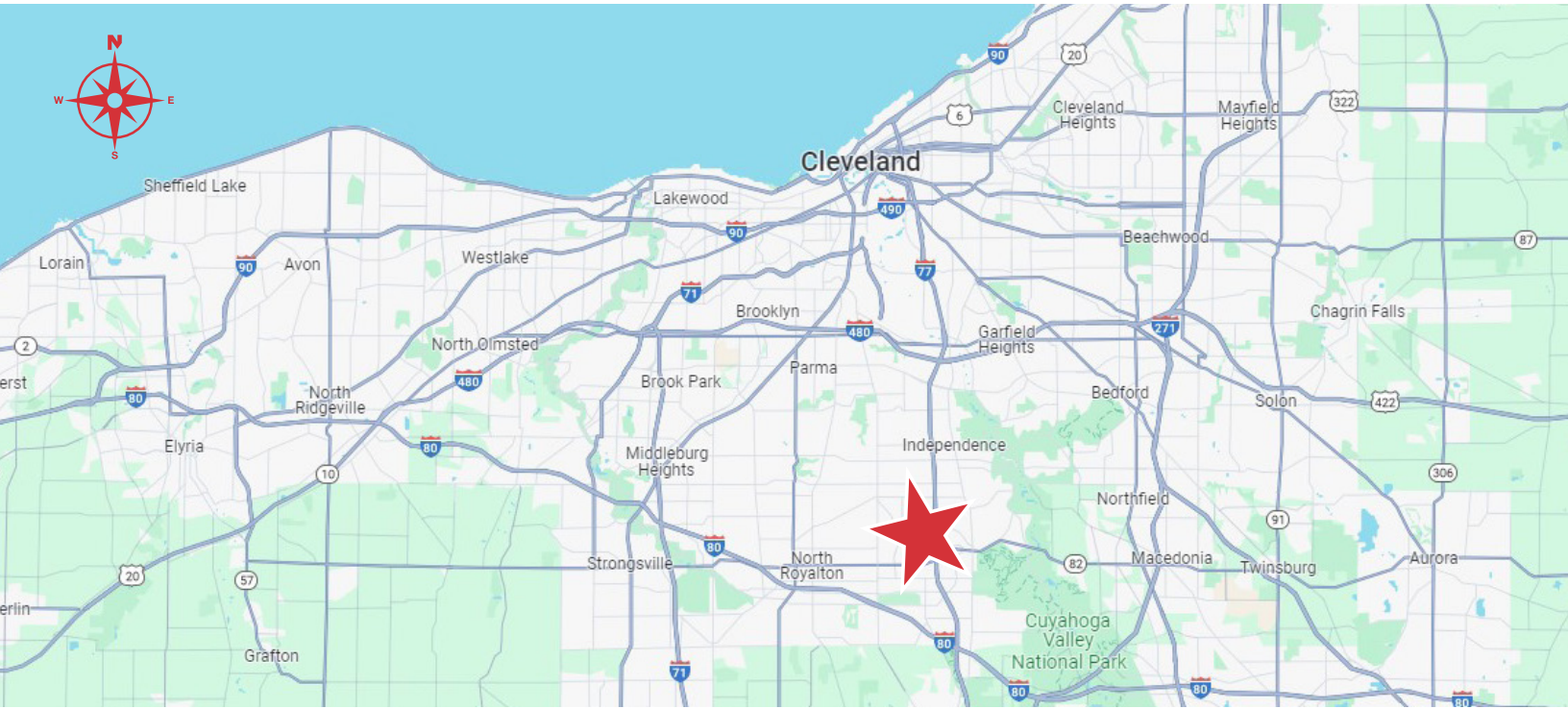
Noah Broadbent
+1 440 708 8578
noah.broadbent@naipvc.com

Joe Hauman
+1 440 591 3723
joe.hauman@naipvc.com

Jeffrey Calig, CCIM
+1 216 455 0910
jcalig@naipvc.com

FOR LEASE

Property Location



Noah Broadbent
+1 440 708 8578
noah.broadbent@naipvc.com

Joe Hauman
+1 440 591 3723
joe.hauman@naipvc.com

Jeffrey Calig, CCIM
+1 216 455 0910
jcalig@naipvc.com

BUILDING INFORMATION SHEET

LOCATION:	750 Ken Mar Industrial Parkway, Broadview Heights, OH 44147
AVAILABLE SPACE:	4,141 Sqft
WAREHOUSE AREA:	1,824 Sqft
OFFICE AREA:	2,317 Sqft
ACRES:	1.27
CONSTRUCTION:	Block
ZONING:	Multi-Tenant Flex
CEILING HEIGHT:	14 Ft
DRIVE-IN DOORS:	2- 10x10
PARKING:	Ample
HEAT:	HVAC- in office and 2 Reznor units in the warehouse
LIGHTING:	T-8 Fluorescents
ELECTRIC POWER:	480v/ 3 Phase
LEASE RATE:	\$8.50 Psqft
NNN CHARGES:	\$5.01 Psqft

CONTACT:	Noah Broadbent +1 440 708 8578 noah.broadbent@naipvc.com	Joe Hauman +1 440 591 3723 joe.hauman@naipvc.com	Jeffrey Calig, CCIM +1 216 455 0910 jcalig@naipvc.com
-----------------	--	--	---

This information has been secured from sources we believe to be reliable, but we make no representations or warranties, expressed or implied, as to the accuracy of the information. References to square footage or age are approximate. Buyer must verify the information and bears all risk for any inaccuracies.