



— 6091 MONTGOMERY ROAD A3, CINCINNATI, OH 45213 —

RETAIL / OFFICE SPACE | PLEASANT RIDGE

3,592 SQ FT | \$16.00 SF/YR (MG)

The Offering

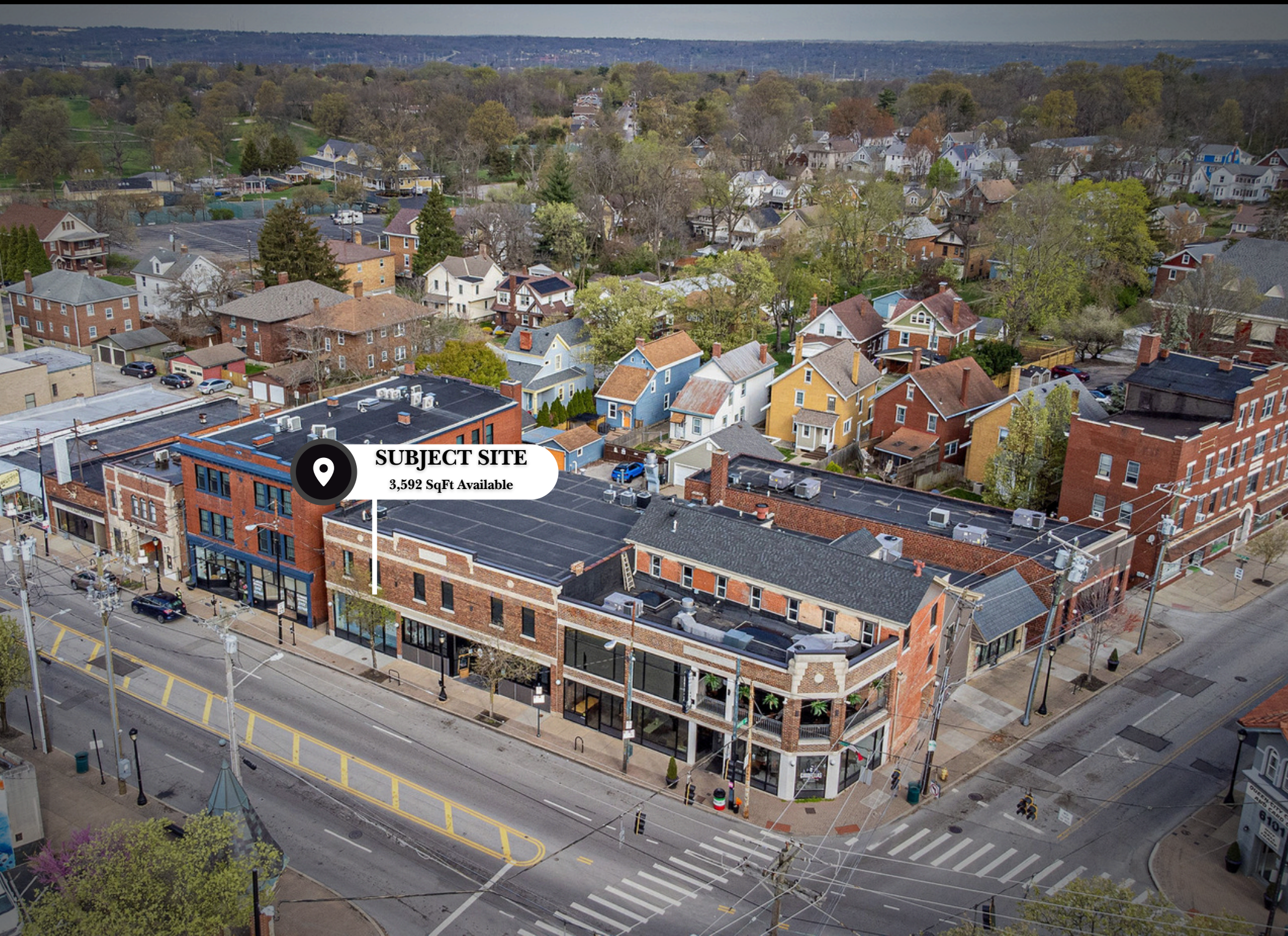
3CRE is pleased to present an outstanding retail opportunity at 6091 Montgomery Road, offering 3,592 square feet of prime space with exceptional potential. Strategically located in a high-traffic area with excellent visibility, this established site is a fully built-out retail space in the heart of Pleasant Ridge. The versatile layout provides ample opportunities for creative design and customization to suit a wide range of business concepts.

Located in the heart of Pleasant Ridge, this space offers a rare opportunity to join one of Cincinnati's most energetic and evolving neighborhoods. Known for its walkability, strong community vibe, and growing roster of popular restaurants and local businesses, Pleasant Ridge is a magnet for residents and visitors alike. With infrastructure already in place and strong demand for new dining and retail options, 6091 Montgomery Road is perfectly positioned for a successful, community-focused venture.

Highlights

- 3,592 Square Feet
- Lease Rate: \$16.00 SF/YR (Modified Gross)
- Located in the Heart of Pleasant Ridge
- Fully Built-Out Retail Space
- Previously occupied by a Salon Concept
- Second Floor Space with Ground Level Storefront
- Open Floorplan
- High Ceilings





SUBJECT SITE

3,592 SqFt Available



PUBLIC PARKING

Paid Lot



PUBLIC PARKING

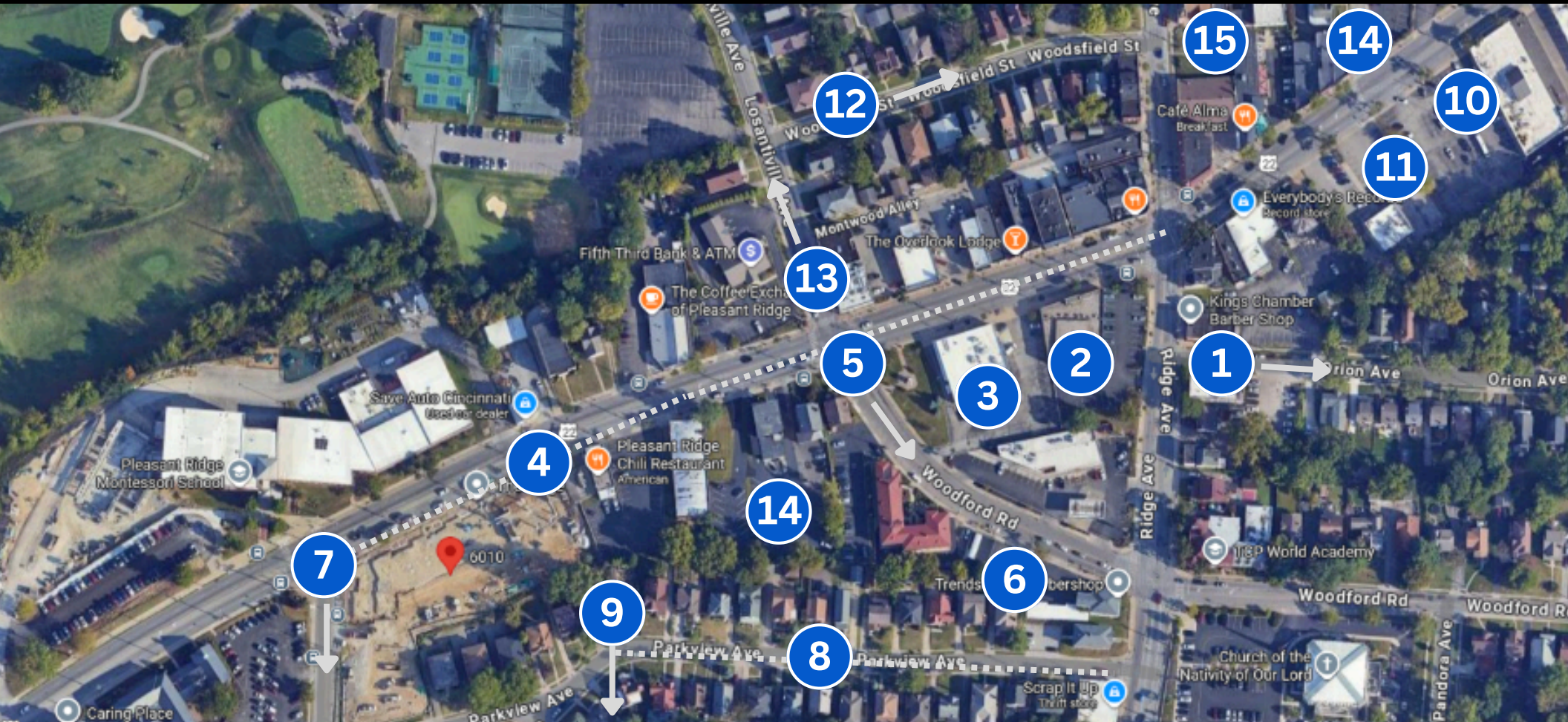
Paid Lot



SUBJECT SITE

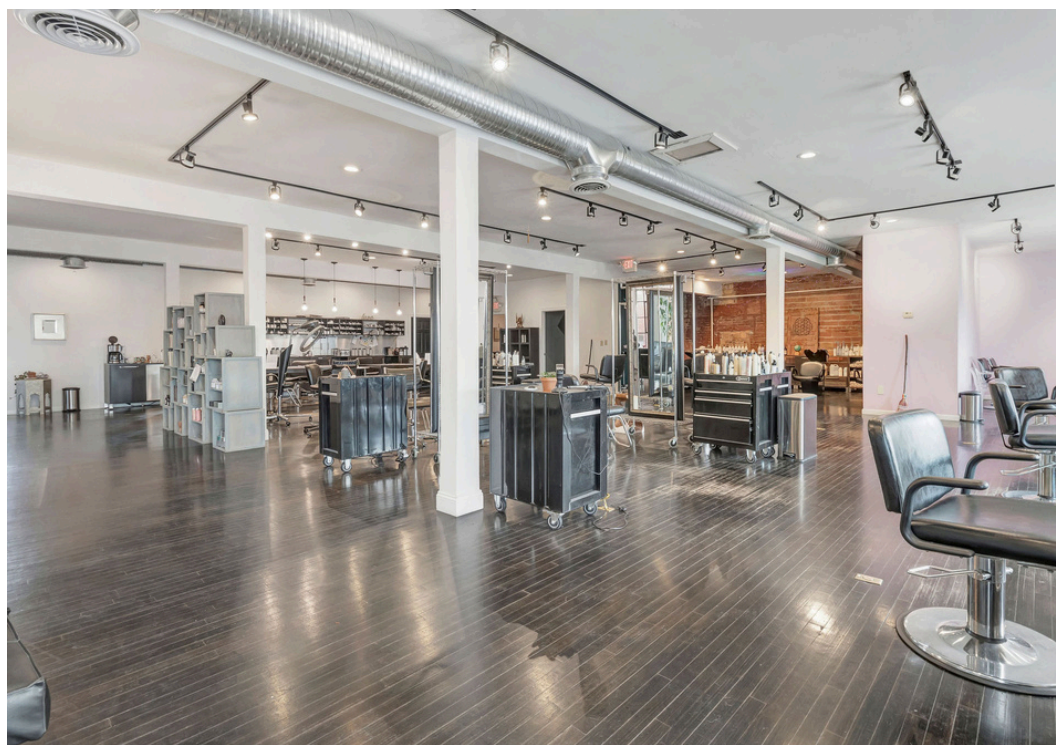
3,592 SqFt Available



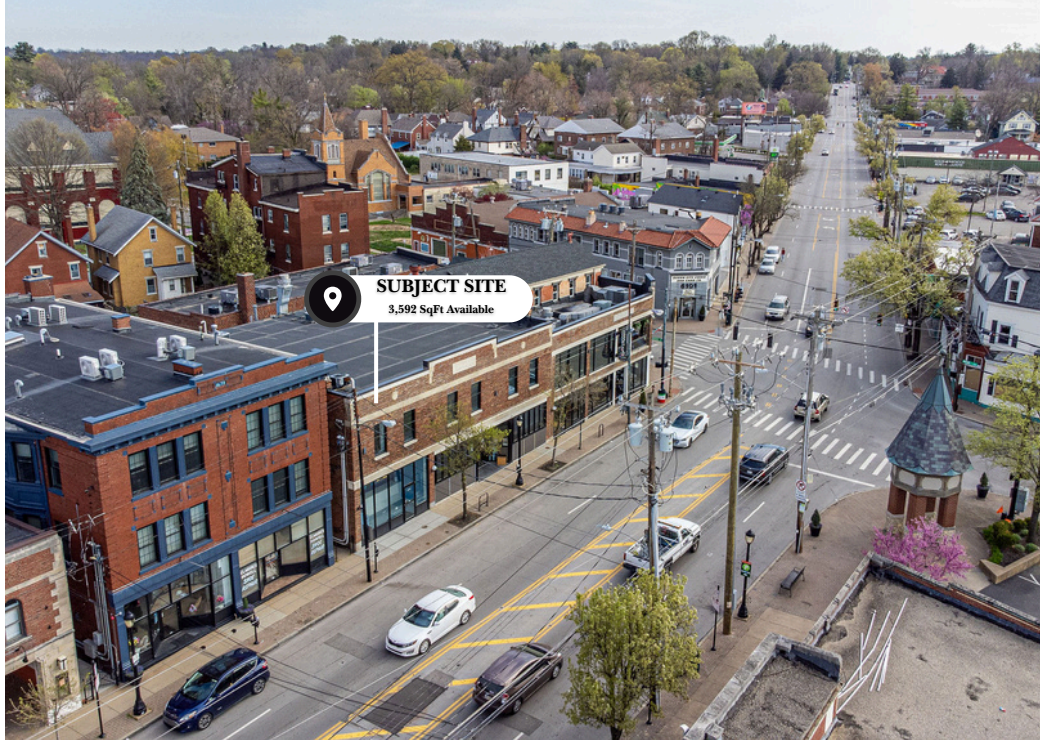


- | | | | |
|---|-------------------------------------|---|---|
| 1 The Orion Lot (30 Spots) | 5 Woodford Street (18 Spots) | 9 Beacraft Avenue (14 Spots) | 13 Losantiville Avenue (9 Spots) |
| 2 Mulaney's Lot (35 Spots) | 6 Barbershop Lot (9 Spots) | 10 Youthland Lot (70 Spots) | 14 Webland Place (5 Spots) |
| 3 PNC Lot (45 Spots) | 7 Lester Road (13 Spots) | 11 Former Burger King (44 Spots) | 15 St. Peter's Church Lot (35 Spots) |
| 4 Montgomery Road (Ridge to Lester) (54 Spots) | 8 Parkview Avenue (23 Spots) | 12 Woodsfield Street (26 Spots) | Total Parking Spots- 430 Spots |

**Within ¼ mile of The Ridge mixed-use development*







6091 MONTGOMERY ROAD A3



FLOOR 1

FLOOR 2

	1 MILE	3 MILE	5 MILE
POPULATION	13,412	107,017	238,656
AVERAGE HOUSEHOLD INCOME	\$89,776	\$87,358	\$96,159
NUMBER OF HOUSEHOLDS	6,318	50,180	105,748
MEDIAN AGE	38.5	38.3	38.2
TOTAL BUSINESSES	465	6,724	16,730
TOTAL EMPLOYEES	4,284	67,809	155,828

Cincinnati

OHIO



METRO AREA STATISTICS

2.3 MM
POPULATION

75K
HOUSEHOLD
INCOME

3.1 %
UNEMPLOYMENT

**FORTUNE
500**

NO. 24 - *KROGER*

NO. 51 - *PROCTER & GAMBLE*

NO. 314 - *WESTERN & SOUTHERN*

NO. 411 - *FIFTH THIRD*

NO. 473 - *CINTAS*

CINCINNATI ACCOLADES

Best City for Young Professionals

Ranked #8 - Forbes (2023)

Top 20 Best Places to Live in the U.S.

Ranked #18 – U.S. News & World Report (2023)

Best Mid-Size City for Job Growth

Ranked #3 - National League of Cities (2023)

Rated (A-) Overall Grade | Niche

- Niche (2024)

Cincinnati Children's ranked #1

Children's Hospital

- US News & World Report



NICK PESOLA

SENIOR ADVISOR

NICK@3CRE.COM

(708) 205-9325



RETAIL LEASING

3CRE Advisors is a multi-state brokerage that has expertise in Commercial Real Estate Investment, Leasing, Property Management, and Business Brokering. Contact our Retail Services Group for any of your retail assignments. Visit us at any of our offices listed below or on our website at 3CRE.com