

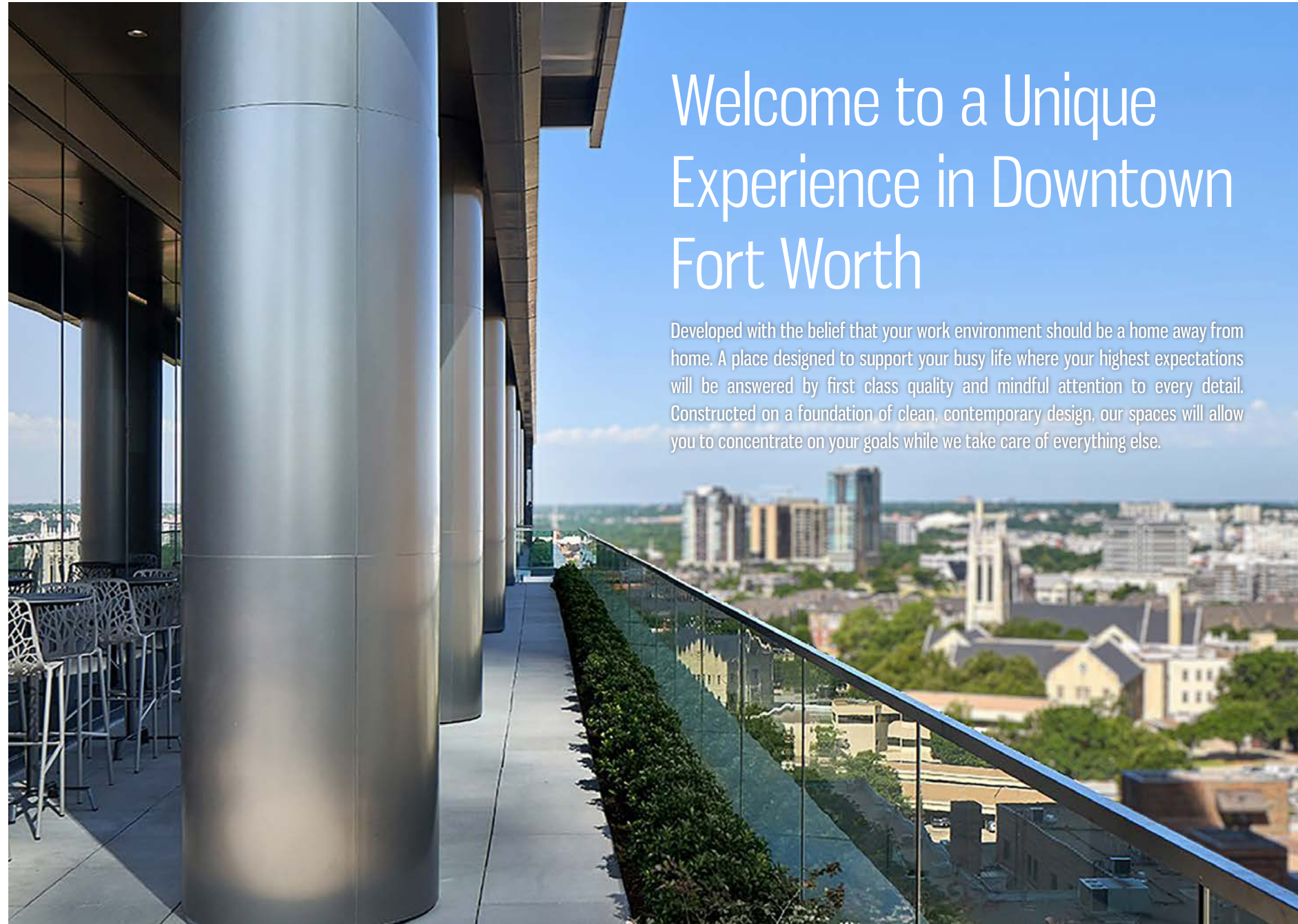
# FROST TOWER

## FORT WORTH

640 TAYLOR STREET, FORT WORTH, TEXAS









# Exclusive to Frost Tower tenants

## THE FIT & FIT-X FITNESS CENTER

Will energize your morning, mid-day or early evening with an invigorating workout experience. Features include men's and women's locker rooms, towel service, panoramic views of the city, cardio and strength training equipment, range of motion/injury prevention equipment.

## BRANCH & BIRD

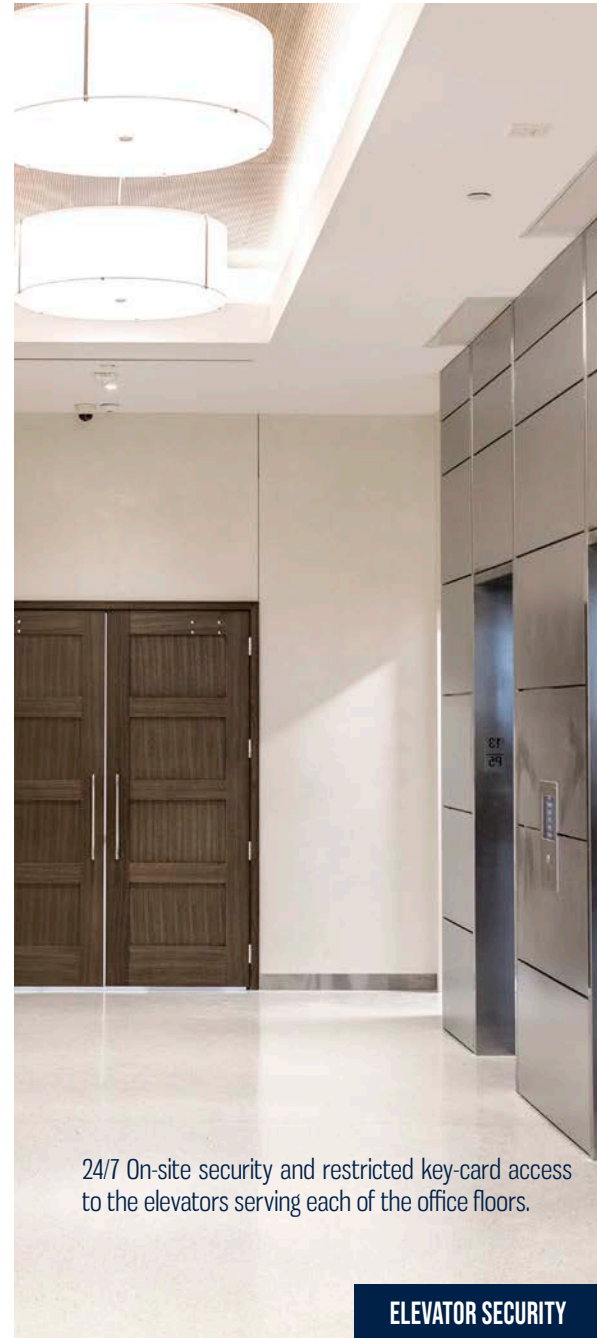
Offers contemporary shareables and an array of cocktails, beer and wine atop the Sky Lobby Level of Frost Tower. With unrivaled views of the city from the outdoor patio and a menu that highlights regionally sourced and seasonal ingredients from small artisan farmers and ranchers, we are excited to bring you an extraordinary downtown spot to enjoy lunch, shareables and drinks with coworkers, family and friend.

## TENANT LOUNGE & PATIO TERRACE

A relaxing environment designed to be an extension of your office. Providing both indoor and rooftop terrace seating, this is an area that tenants can utilize to take a phone call, hold an impromptu meeting or just plug in with their laptop to enjoy the weather and sprawling views of downtown Fort Worth

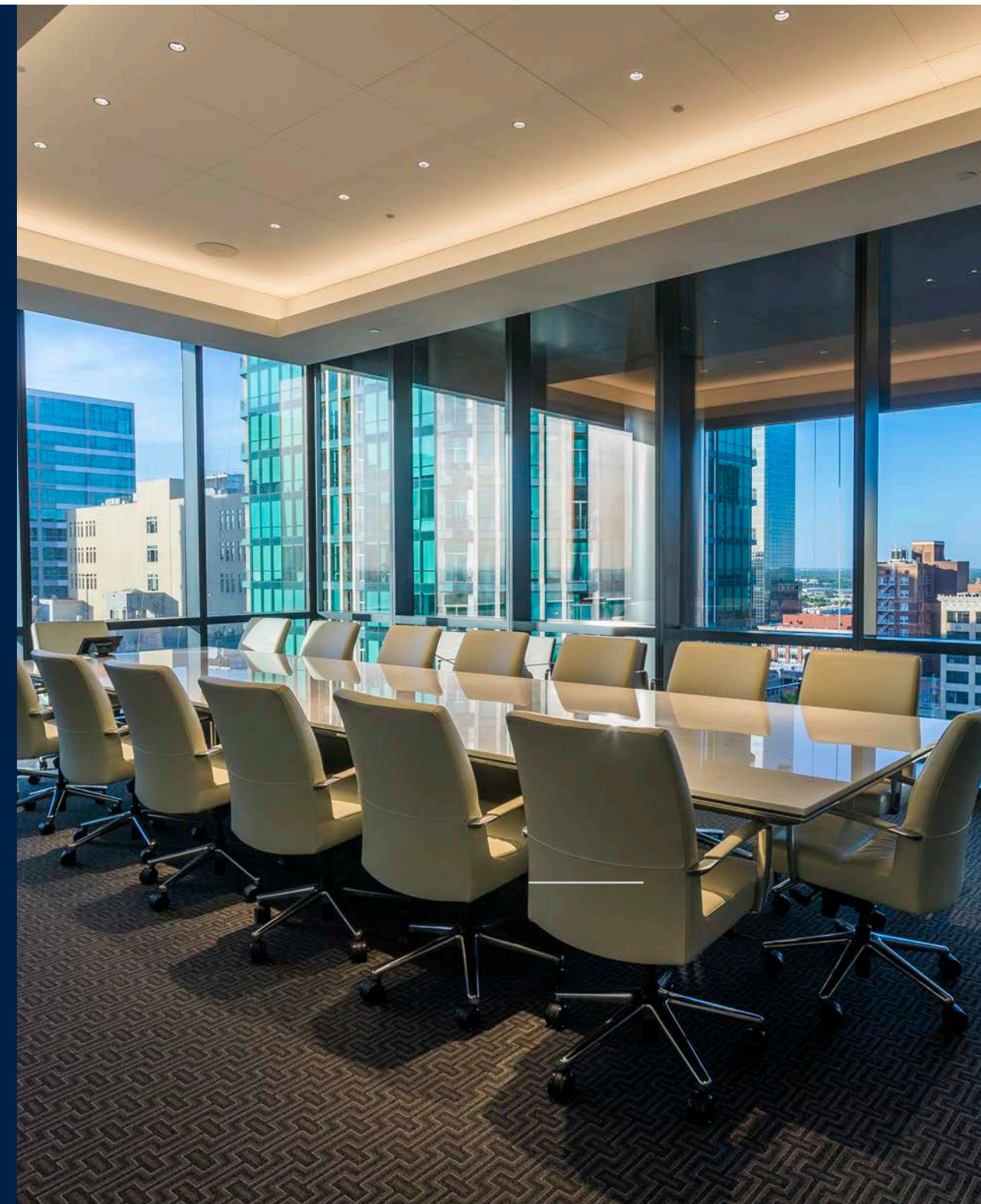






# PalmWood Event & Conference Center

PalmWood is a full-service, state-of-the-art event & conference center, designed to accommodate all of your meeting and event needs – from casual to elegant. The conference center utilizes premium multimedia presentation technology and audio-visual conferencing systems for in-house and global communication. Wine locker also available.







Walking distance to Sundance Square, the Fort Worth Convention Center, and the Downtown Fort Worth Omni Hotel

Downtown is the hub of it all. Simply put, this is a fantastic place to work! That's why so many businesses are located here—from well-known national firms to local up-and-comers. Whether you want to office in a Class A skyscraper or a historic building, this is the place to grow.



BASS PERFORMING HALL

Bass Performance Hall is the crown jewel of a city which boasts the nation's third largest cultural district. It is also an important symbol of one of the most successful downtown revitalization efforts in the country.



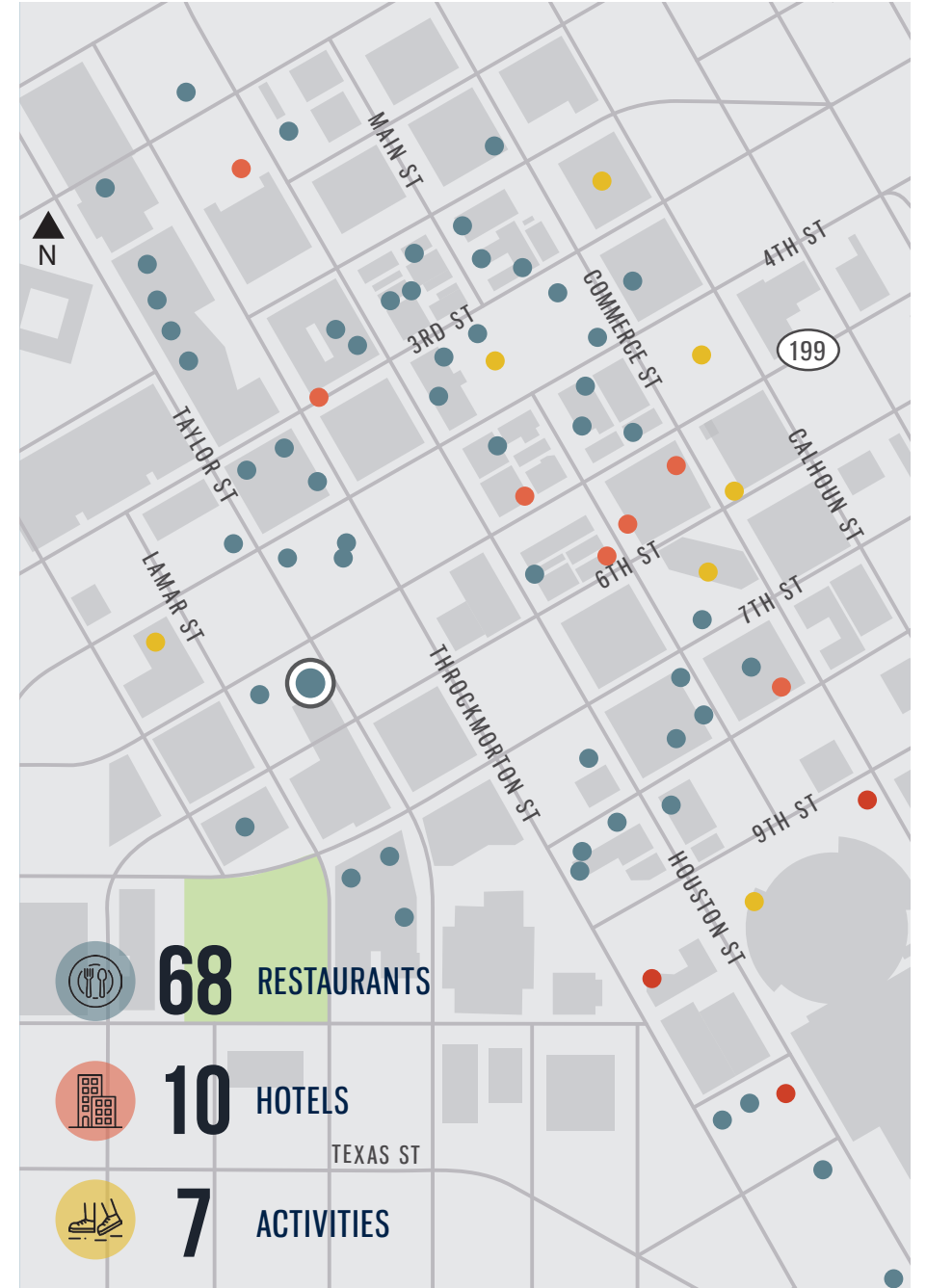
DEL FRISCO'S DOUBLE EAGLE

In the spirit of Texas, Del Frisco's Fort Worth steakhouse features a dramatic, yet intimate, ambiance.



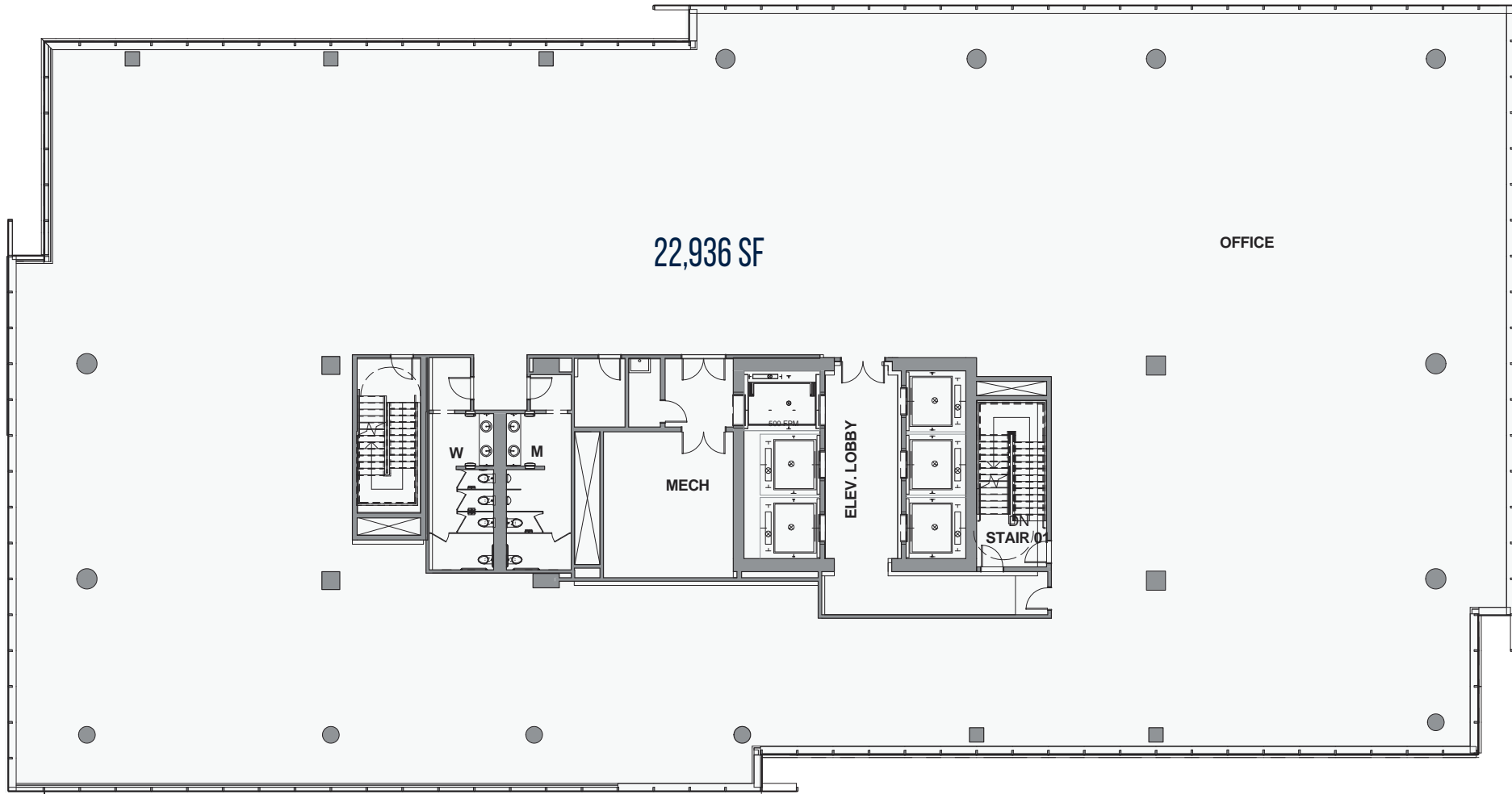
THE ASHTON HOTEL

Located in the heart of downtown Fort Worth, and their guests are assured a truly outstanding experience.





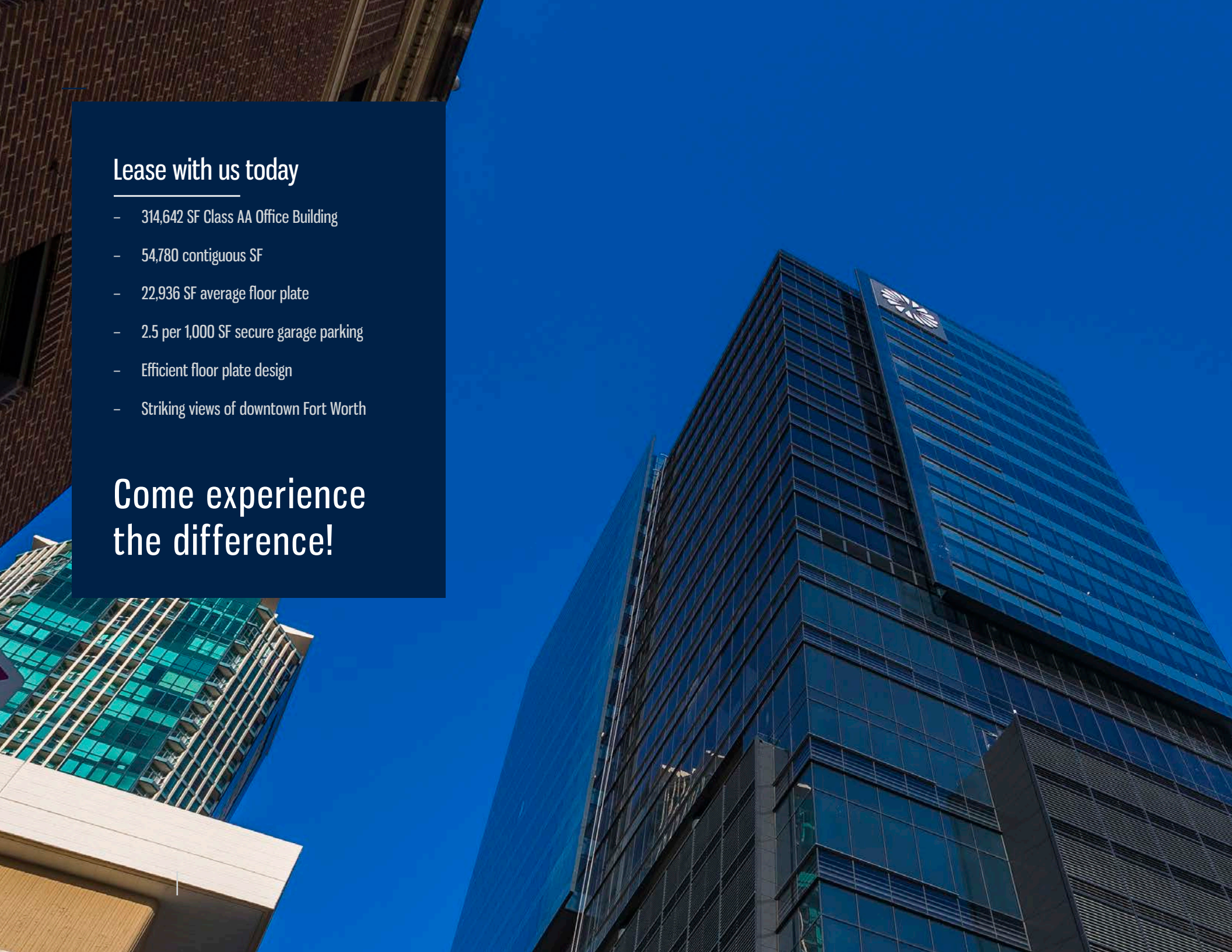
TYPICAL FLOOR PLAN



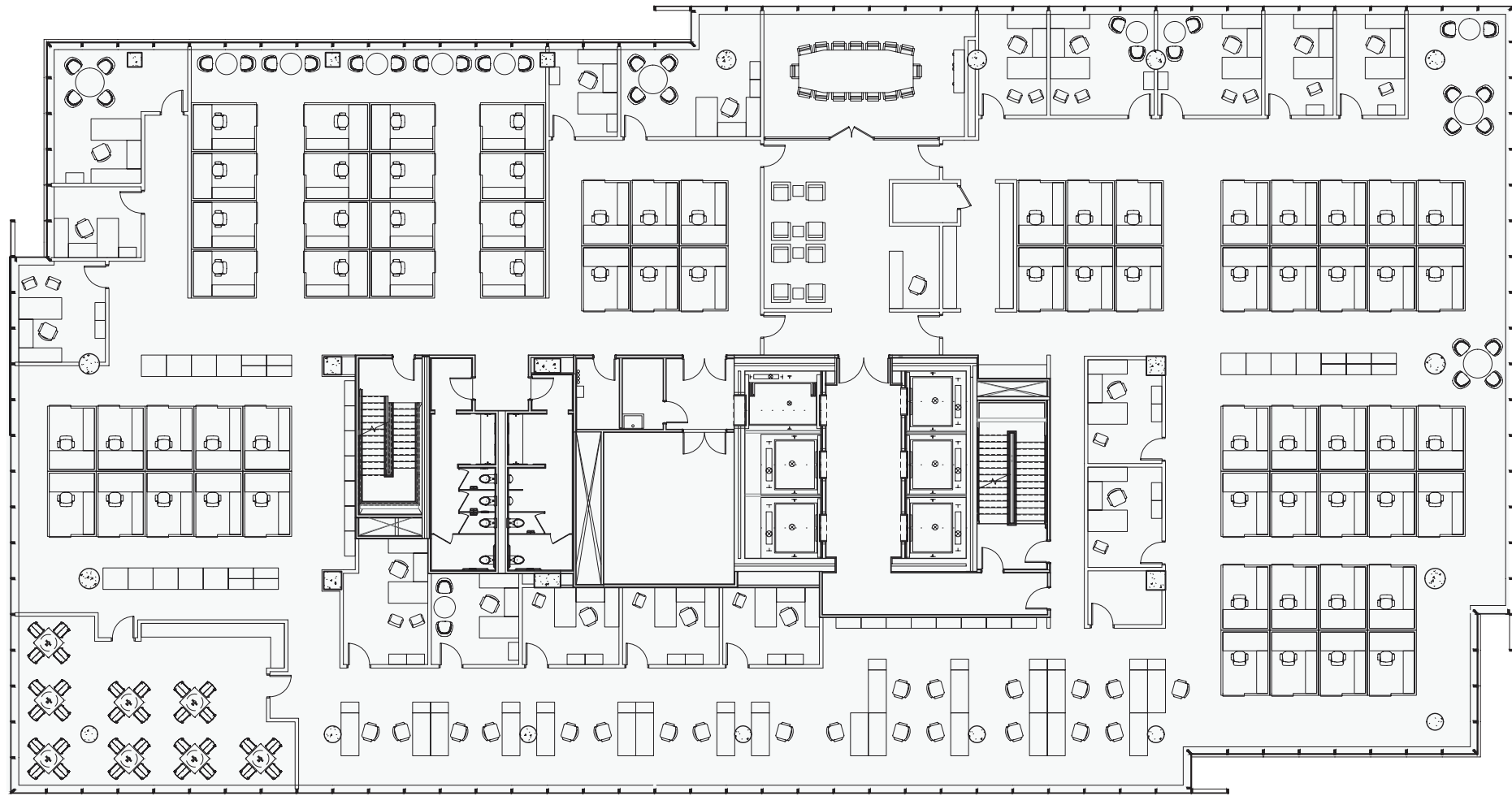
Lease with us today

- 314,642 SF Class AA Office Building
- 54,780 contiguous SF
- 22,936 SF average floor plate
- 2.5 per 1,000 SF secure garage parking
- Efficient floor plate design
- Striking views of downtown Fort Worth

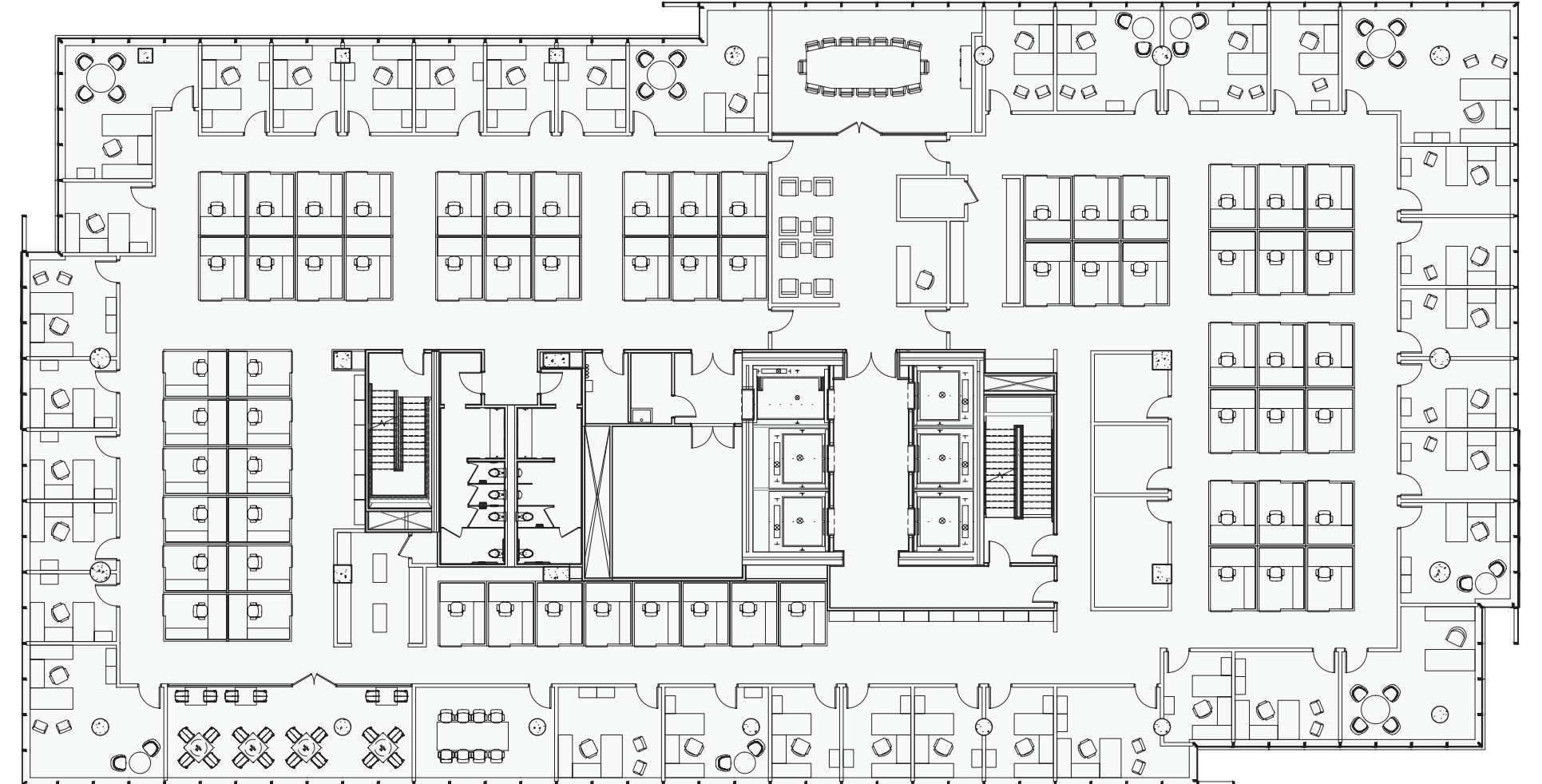
Come experience the difference!



**HYPOTHETICAL FLOOR PLAN - OPEN OFFICE ENVIRONMENT**



**HYPOTHETICAL FLOOR PLAN - PERIMETER OFFICES**











  
**STREAM**

For Leasing Information and Inquiries,  
Please Contact Stream Realty Partners:

CHRIS DOGGETT  
Office 817.877.1316  
Mobile 214.773.7977  
[chris.doggett@streamrealty.com](mailto:chris.doggett@streamrealty.com)

Copyright © 2022 Stream Realty Partners. All rights reserved.

The information contained herein was obtained from sources believed reliable; however, Stream Realty Partners, L.P. make no guarantees, warranties or representations as to the completeness or accuracy thereof. The presentation of this property is submitted subject to errors, change of price, or conditions, prior sale or lease, or withdrawal without notice.