

# CHARBONNEAU VILLAGE CENTER

31960 SW Charbonneau Dr | Wilsonville, OR 97070

FOR LEASE



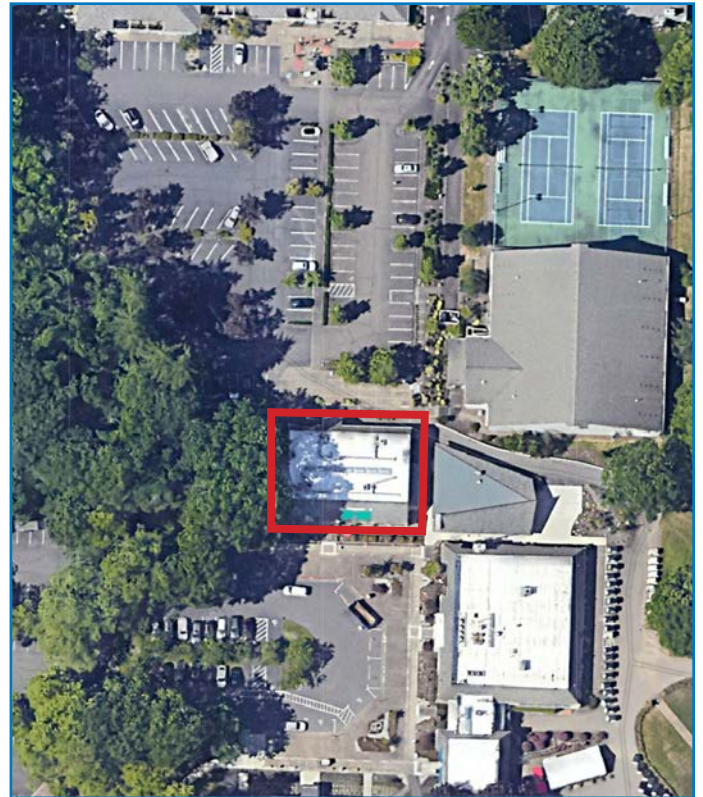
## OFFICE SPACE FOR LEASE

### DETAILS

- Space size:  $\pm$  971 SF
- Lease rate: Call brokers for rate
- Zoning: PDC

### FEATURES

- Well-maintained office in Wilsonville's premier area
- Open layout with one private office
- Abundant natural light
- Ample parking
- Shared restroom



07.14.2025

For more information or a property tour, please contact:

**GREG NESTING**

503.225.8440

GregN@norris-stevens.com

**LUIS MARTIN DEL CAMPO**

503.416.8422

LuisM@norris-stevens.com

**Norris & Stevens**

INVESTMENT REAL ESTATE SERVICES



Information contained herein has been obtained from others and considered to be reliable; however, a prospective purchaser or lessee is expected to verify all information to their own satisfaction.

900 SW 5th Avenue • 17th Floor • Portland, OR 97204  
503.223.3171 • norris-stevens.com

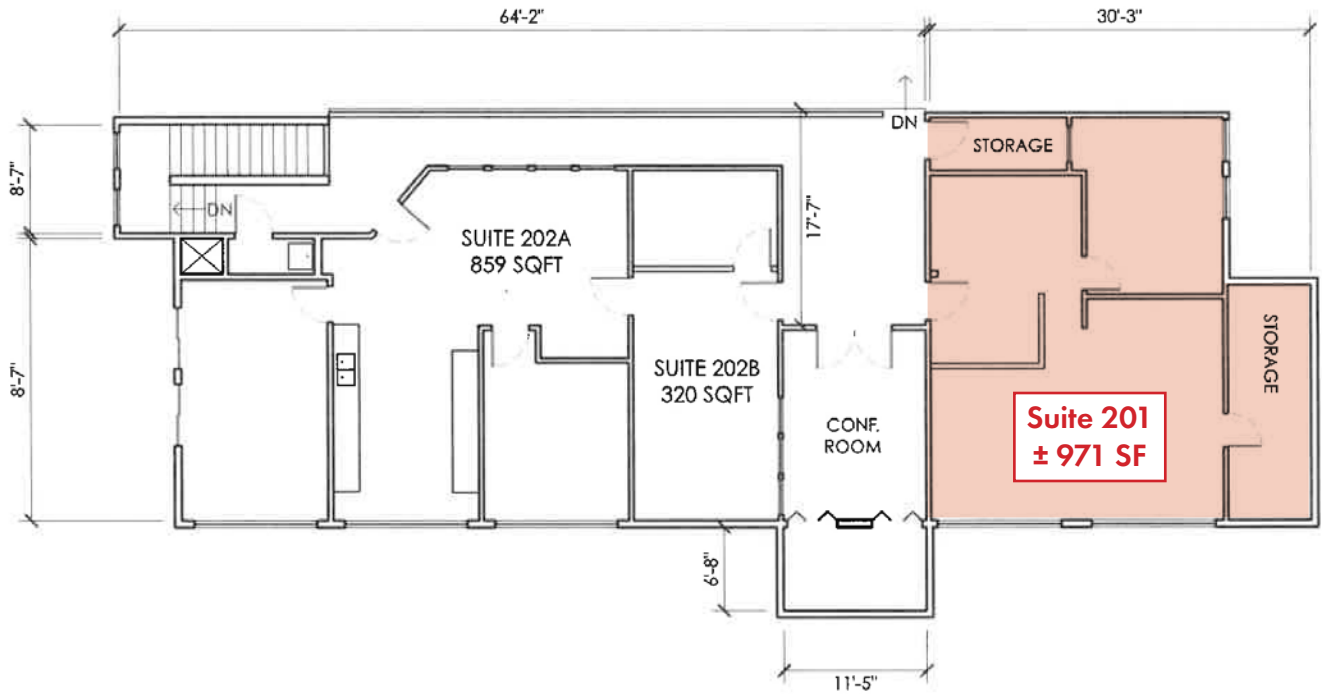


# CHARBONNEAU VILLAGE CENTER

31960 SW Charbonneau Dr | Wilsonville, OR 97070

FOR LEASE

## FLOOR PLAN



For more information or a property tour, please contact:

**GREG NESTING**

503.225.8440

GregN@norris-stevens.com

**LUIS MARTIN DEL CAMPO**

503.416.8422

LuisM@norris-stevens.com

**Norris & Stevens**

INVESTMENT REAL ESTATE SERVICES



Information contained herein has been obtained from others and considered to be reliable; however, a prospective purchaser or lessee is expected to verify all information to their own satisfaction.

900 SW 5th Avenue • 17th Floor • Portland, OR 97204

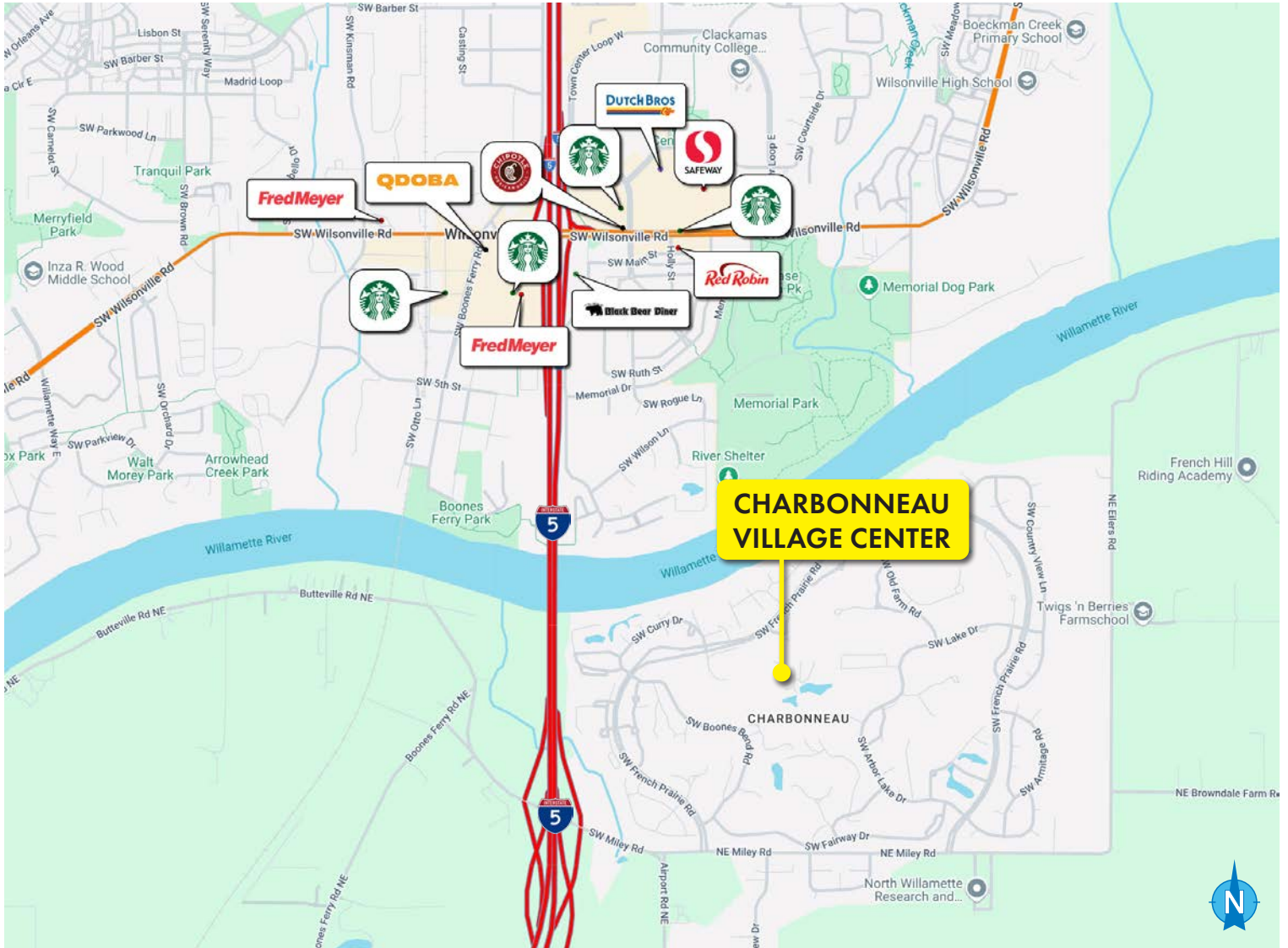
503.223.3171 • [norris-stevens.com](http://norris-stevens.com)

# CHARBONNEAU VILLAGE CENTER

31960 SW Charbonneau Dr | Wilsonville, OR 97070

FOR LEASE

PROPERTY PHOTOS & MAP



For more information or a property tour, please contact:

**GREG NESTING**

503.225.8440

GregN@norris-stevens.com

**LUIS MARTIN DEL CAMPO**

503.416.8422

LuisM@norris-stevens.com

**Norris & Stevens**

INVESTMENT REAL ESTATE SERVICES



Information contained herein has been obtained from others and considered to be reliable; however, a prospective purchaser or lessee is expected to verify all information to their own satisfaction.

900 SW 5th Avenue • 17th Floor • Portland, OR 97204

503.223.3171 • [norris-stevens.com](http://norris-stevens.com)