



1601

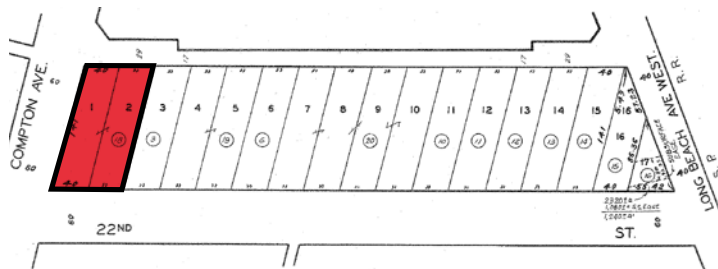
East 22nd Street

 DAUM

# PROPERTY SUMMARY

LISTING PRICE:	Undisclosed
ADDRESS:	1601 East 22nd Street Los Angeles, CA 90011
BUILDING SIZE:	7,600 SF
LAND SIZE:	10,929 SF (0.25AC)
YEAR BUILT:	1965
APN:	5118-024-018
ZONING:	LAM1
GRADE LEVEL DOOR:	2
CEILING HEIGHT:	15 FT
POWER:	400amp / 3 phases
OPPORTUNITY ZONE:	Yes

## PARCEL MAP



# PROPERTY HIGHLIGHTS



FREE STANDING



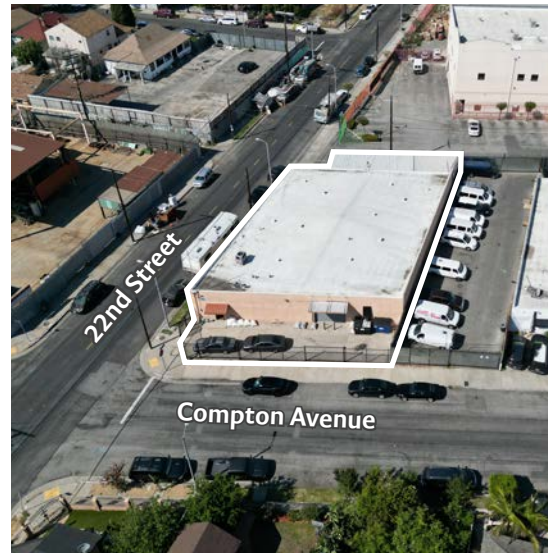
CLOSE PROXIMITY TO PORTS,  
HWYS, LAX, AND OTHER  
DESTINATIONS



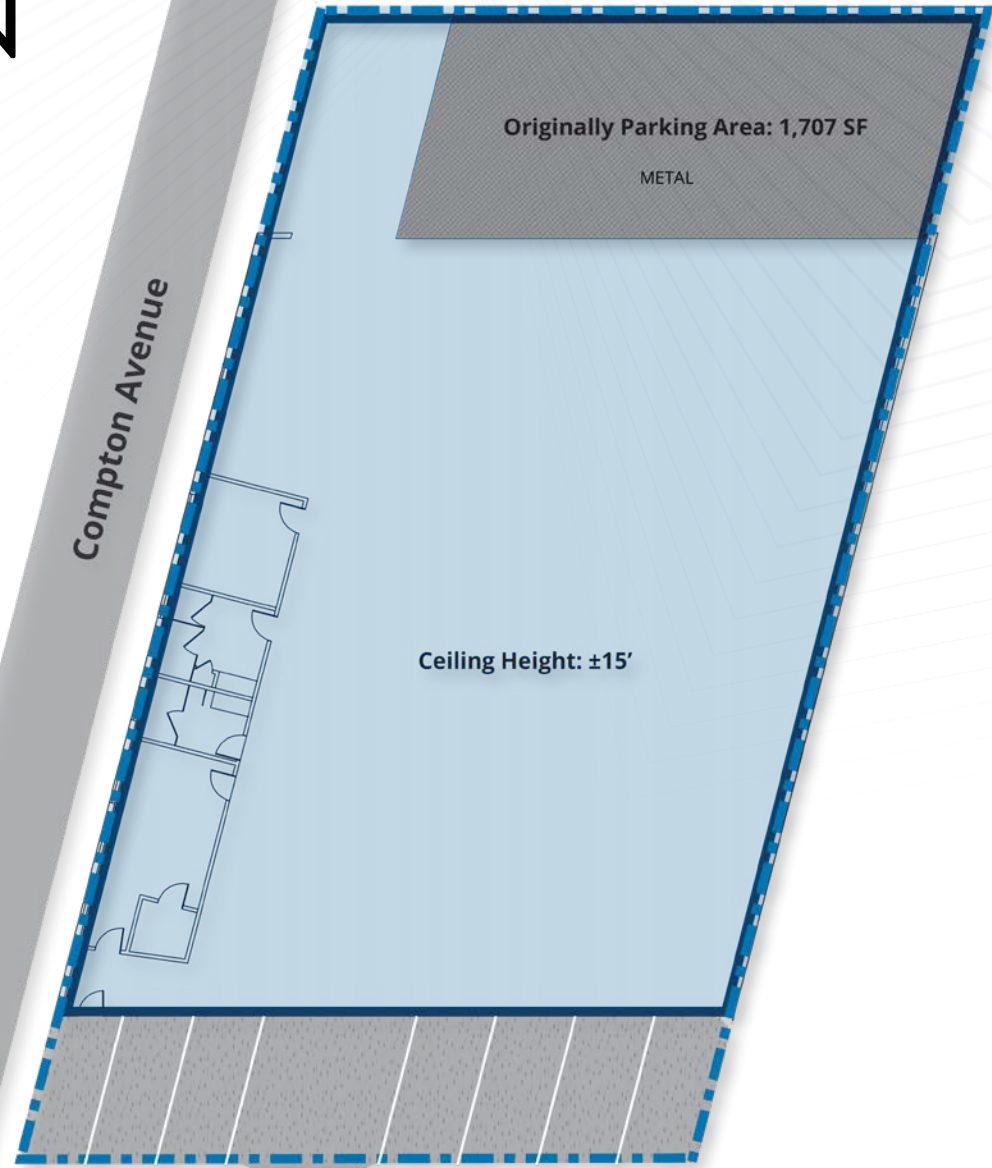
FENCED  
FOR SECURITY



2 GROUND LEVEL



# SITE PLAN



## BUILDING SIZE

Warehouse:	6,6824 SF
Office:	776 SF
TOTAL:	7,600 SF
WAREHOUSE ADDITION:	1,707 SF

22nd Street

Compton Avenue

Originally Parking Area: 1,707 SF

METAL

Ceiling Height: ±15'

## Distance to Destinations

LA Port	23 miles
Long Beach Port	23 miles
10 freeway	1.8 miles
110 freeway	2.5 miles
5 freeway	4 miles
DTLA	5 miles
Hollywood	12 miles
Culver City	12 miles
Pico Rivera	13 miles
Beverly Hills	14 miles
LAX	15 miles
La Mirada	18 miles
Santa Monica	18 miles
Fullerton	30 miles



## MOON LIM

Executive Vice President

+1 213 308 2056

[Moon.Lim@daumcommercial.com](mailto:Moon.Lim@daumcommercial.com)

### BROKER CONTACT & DISCLAIMER

Although all information is furnished regarding for sale, rental or financing is from sources deemed reliable, such information has not been verified and no express representation is made nor is any to be implied as to the accuracy thereof, and it is submitted subject to errors, omissions, changes of price, rental or other conditions, prior sale, lease or financing, or withdrawal without notice.

D/AQ Corp. # 01129558

# 1601

East 22nd Street

 DAUM