



 4733

4733 Newcastle Road, Stockton, CA 95215 USA

Prologis Stockton 11



Prologis Stockton 11 - 186,944 SF

This state-of-the-art facility is strategically located in close proximity to BNSF and UPRR Intermodal terminals with direct access to Highway 99 and Interstate 5.

DEVELOPMENT HIGHLIGHTS

- ±5,100 SF office
- 30 dock high doors
- 29 pit levelers
- 2 grade level doors
- 32' clear height
- 50' x 52' column spacing
- 60' speed bay
- ESFR sprinklers
- 140 auto parking spaces
- 52 trailer parking positions
- 200' truck court
- 2,500 amps
- LED lighting
- Existing solar system
- Secured truck court



SIZE



DOCK DOORS



GRADE DOORS



TRUCK COURT



BUILDING DEPTH

Stockton 11

186,944 SF

30

2

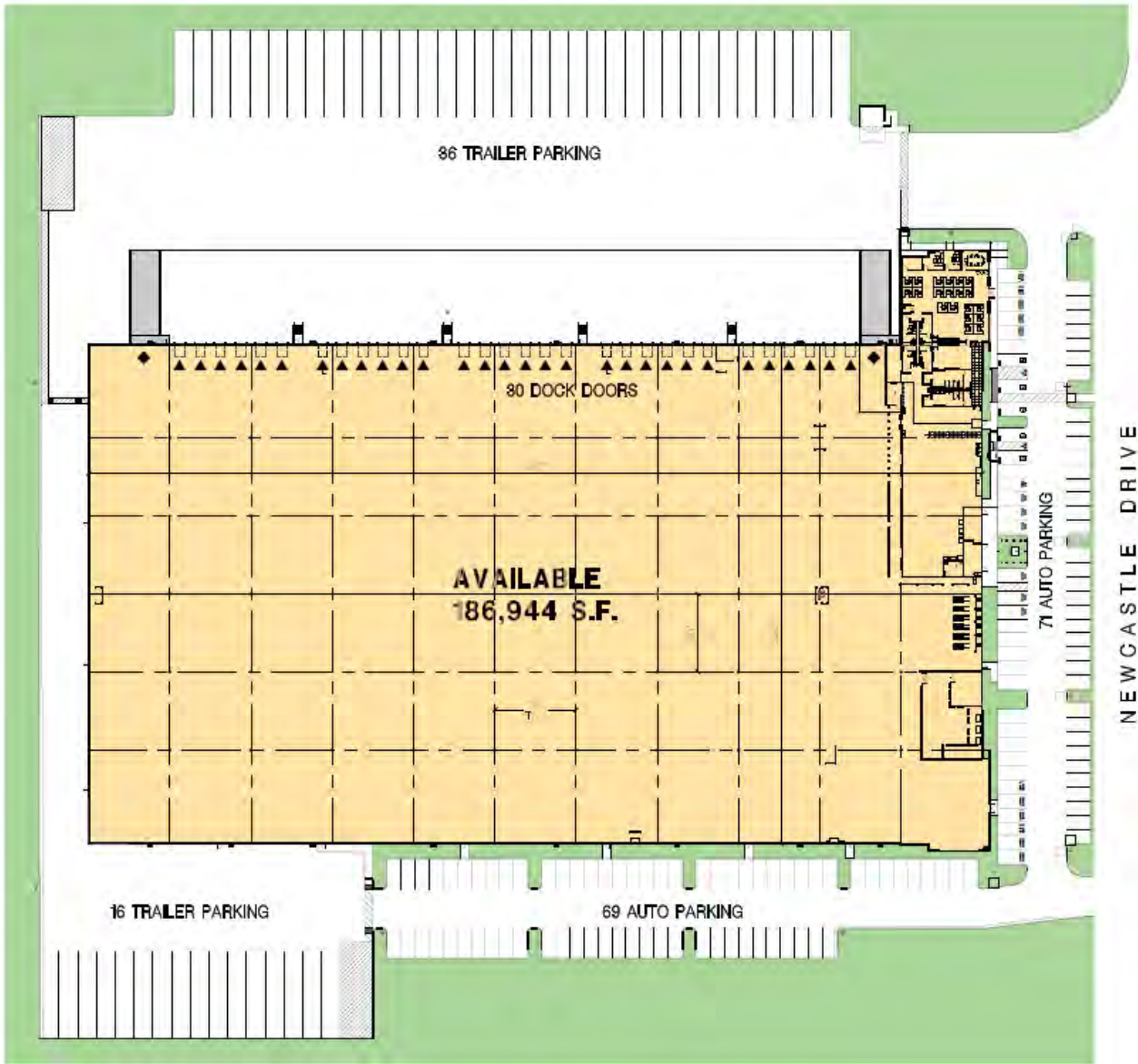
200'

320'

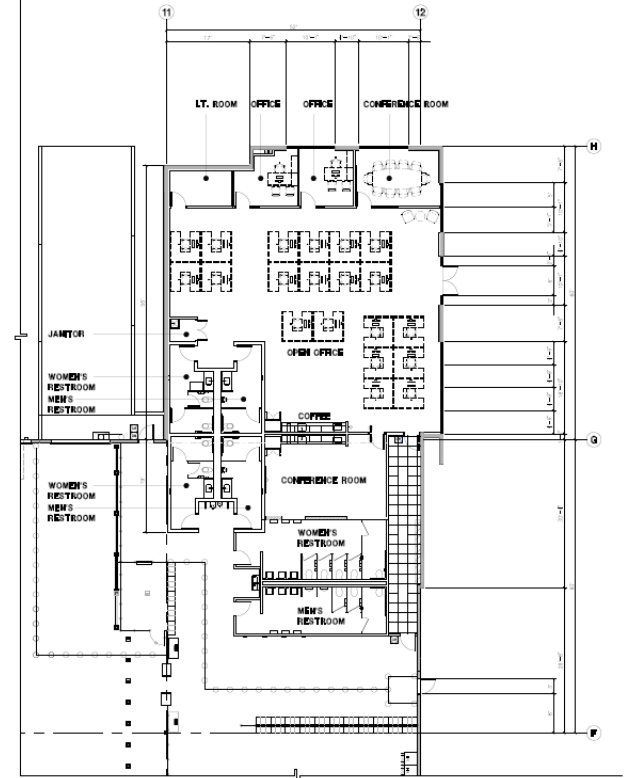
Your single-source service for efficient move-in and operations: prologisessentials.com



AVAILABLE OCTOBER 2024
Existing – 186,944 SF



Office: 5,100 SF



Existing Footprint

- ▼ Dock Door
- ◆ Drive-in Door
- Total footprint: 186,944 SF
- Warehouse: 182,960 SF
- Office: 5,100 SF

