

INDUSTRIAL FOR LEASE | 6,000 SF

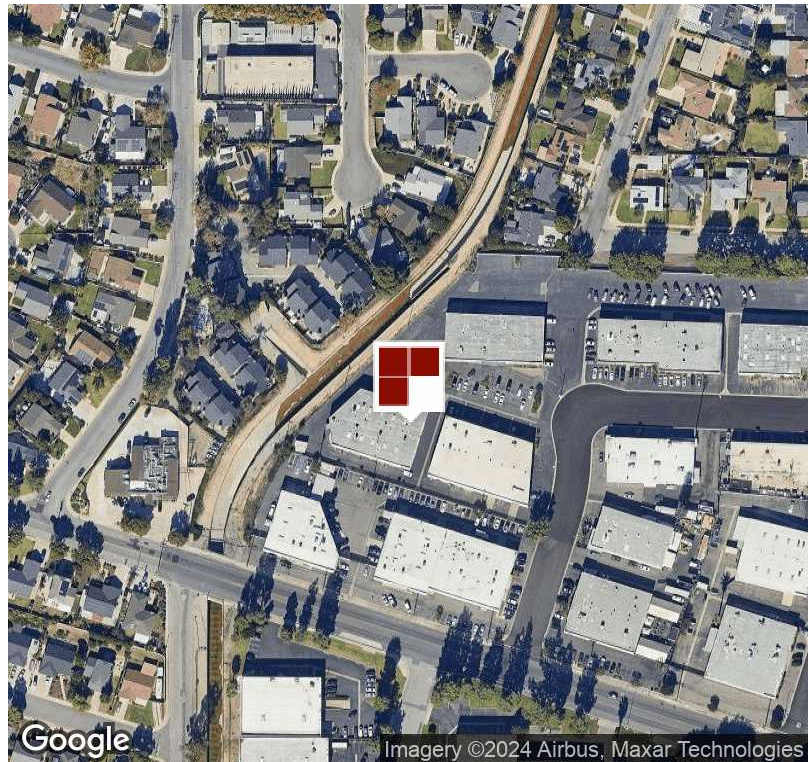
2875 METROPOLITAN PLACE POMONA, CA 91767

COMPETITIVE GROSS LEASE RATE | NO CAMS



PROPERTY HIGHLIGHTS

- Approximately 6,000 SF Unit
- 1,200 SF Office Area, Reception Area, 2 Private Offices, Bullpen
- Fully Conditioned Warehouse
- Two Ground Level Doors (2) 12'x 14'
- 600 amps 120/208 volt (3P)
- 16' Minimum Clearance



MATTHEW ROSSMAN
DIRECTOR OF MARKETING
714.783.2107
matt@bryanindprop.com
CA DRE #01794680

BRYAN INDUSTRIAL PROPERTIES
146 E. ORANGETHORPE AVENUE
ANAHEIM, CA 92801
BRYANINDPROP.COM
CA DRE #00002442

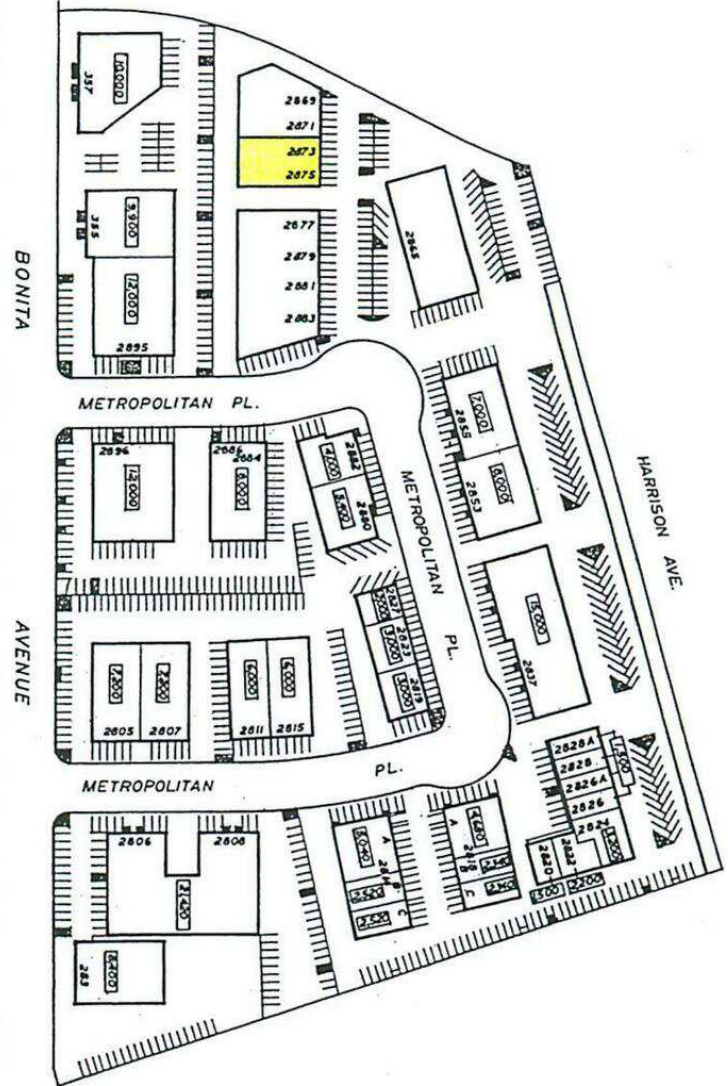
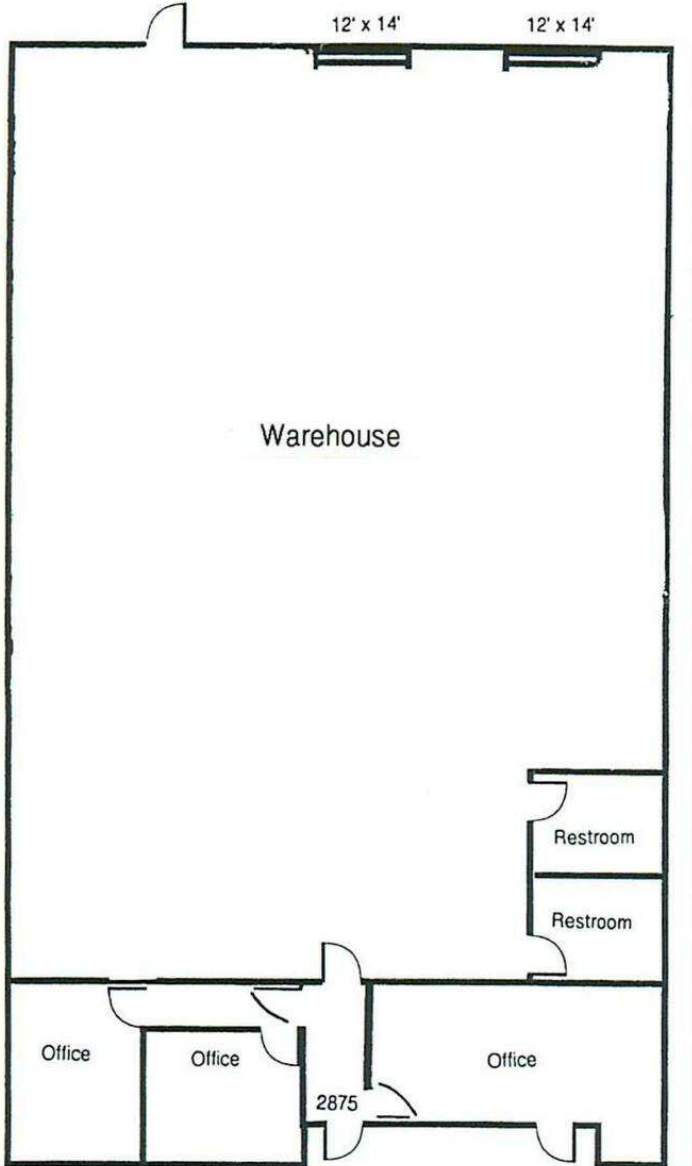


The information contained herein has been obtained from sources we deem reliable. However, no warranties or representations, expressed or implied, are made as to the accuracy of any information contained herein, and the information is subject to errors and omissions. This information is also subject to price, rental or other conditions, withdrawal without notice, and to any special listing conditions by our principals.

INDUSTRIAL FOR LEASE | 6,000 SF

2875 METROPOLITAN PLACE POMONA, CA 91767

FLOOR PLAN



MATTHEW ROSSMAN
DIRECTOR OF MARKETING
714.783.2107
matt@bryanindprop.com
CA DRE #01794680

BRYAN INDUSTRIAL PROPERTIES
146 E. ORANGETHORPE AVENUE
ANAHEIM, CA 92801
BRYANINDPROP.COM
CA DRE #00002442

