



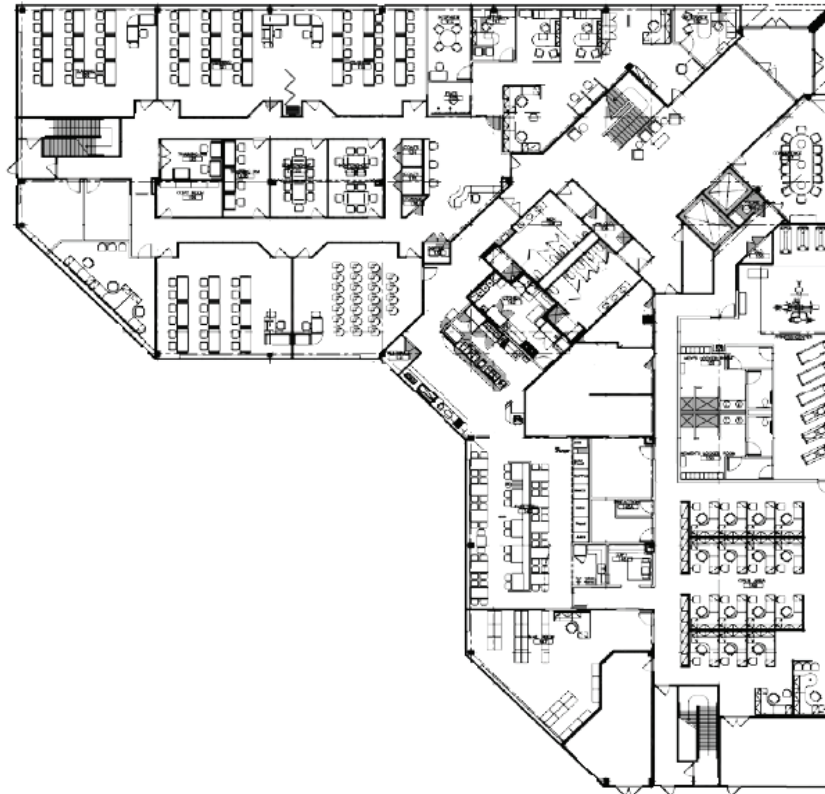
# 200 COMMERCE

200 Commerce Drive, Newark DE

**Full building  
sublease now available**

1st Floor

22,678 SF



**CONTACT:**

**CINDY FLEMING**

+1 302 356 2866

cindy.fleming@am.jll.com

**BLAISE FLETCHER**

+1 302 356 2861

blaise.fletcher@am.jll.com

**JLL | JONES LANG LASALLE BROKERAGE, INC.**

1007 N Orange Street, Suite 400

Wilmington, DE 19801

+1 302 356 2858



Disclaimer: Although information has been obtained from sources deemed reliable, neither Owner nor JLL makes any guarantees, warranties or representations, express or implied, as to the complete-ness or accuracy as to the information contained herein. Any projections, opinions, assumptions or estimates used are for example only. There may be differences between projected and actual results, and those differences may be material. The Property may be withdrawn without notice. Neither Owner nor JLL accepts any liability for any loss or damage suffered by any party resulting from reliance on this information. If the recipient of this information has signed a confidentiality agreement regarding this matter, this information is subject to the terms of that agreement. ©2022. Jones Lang LaSalle IP, Inc. All rights reserved.



# 200COMMERCE

200 Commerce Drive, Newark DE

**Full building  
sublease now available**

2nd Floor  
22,678 SF



**CONTACT:**

**CINDY FLEMING**

+1 302 356 2866

[cindy.fleming@am.jll.com](mailto:cindy.fleming@am.jll.com)

**BLAISE FLETCHER**

+1 302 356 2861

[blaise.fletcher@am.jll.com](mailto:blaise.fletcher@am.jll.com)

**JLL | JONES LANG LASALLE BROKERAGE, INC.**

1007 N Orange Street, Suite 400

Wilmington, DE 19801

+1 302 356 2858



Disclaimer: Although information has been obtained from sources deemed reliable, neither Owner nor JLL makes any guarantees, warranties or representations, express or implied, as to the complete-ness or accuracy as to the information contained herein. Any projections, opinions, assumptions or estimates used are for example only. There may be differences between projected and actual results, and those differences may be material. The Property may be withdrawn without notice. Neither Owner nor JLL accepts any liability for any loss or damage suffered by any party resulting from reliance on this information. If the recipient of this information has signed a confidentiality agreement regarding this matter, this information is subject to the terms of that agreement. ©2022. Jones Lang LaSalle IP, Inc. All rights reserved.



# 200 COMMERCE

200 Commerce Drive, Newark DE

**Full building  
sublease now available**

3rd Floor  
22,678 SF



**CONTACT:**

**CINDY FLEMING**

+1 302 356 2866

[cindy.fleming@am.jll.com](mailto:cindy.fleming@am.jll.com)

**BLAISE FLETCHER**

+1 302 356 2861

[blaise.fletcher@am.jll.com](mailto:blaise.fletcher@am.jll.com)

**JLL | JONES LANG LASALLE BROKERAGE, INC.**

1007 N Orange Street, Suite 400

Wilmington, DE 19801

+1 302 356 2858



Disclaimer: Although information has been obtained from sources deemed reliable, neither Owner nor JLL makes any guarantees, warranties or representations, express or implied, as to the complete-ness or accuracy as to the information contained herein. Any projections, opinions, assumptions or estimates used are for example only. There may be differences between projected and actual results, and those differences may be material. The Property may be withdrawn without notice. Neither Owner nor JLL accepts any liability for any loss or damage suffered by any party resulting from reliance on this information. If the recipient of this information has signed a confidentiality agreement regarding this matter, this information is subject to the terms of that agreement. ©2022. Jones Lang LaSalle IP, Inc. All rights reserved.