

# HOUSER DRIVE LOT

10925 Houser Drive, Fredericksburg, VA 22408

**Jarrell Properties**

Real Estate Development

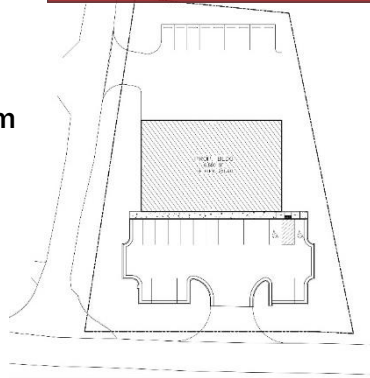


## PROPERTY DETAILS

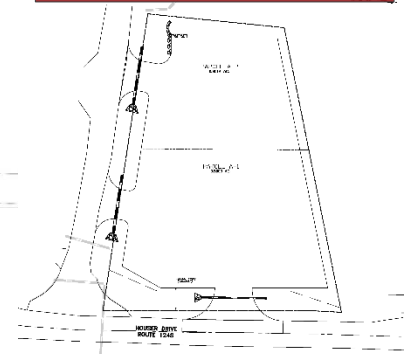
This 0.80 Acre lot is being offered as fenced in storage space for lease and/or build to suit flex/warehouse building. The property is conveniently located ½ mile from US Route 1 in the Four Mile Fork area of Spotsylvania County, Virginia.

- 0.80 Acres | TM#: 23-14-A1 & 23-14-A2
- Individual yard/lot spaces available for lease
- Zoned I-1 (Light Industrial)
- Strong location just 1.5 Miles from I-95 (Exit 126)
- Flexible lease terms for qualified lessees

### CONCEPTUAL BUILDING LAYOUT



### PROPOSED FENCED LOT PLAN



## CONTACT

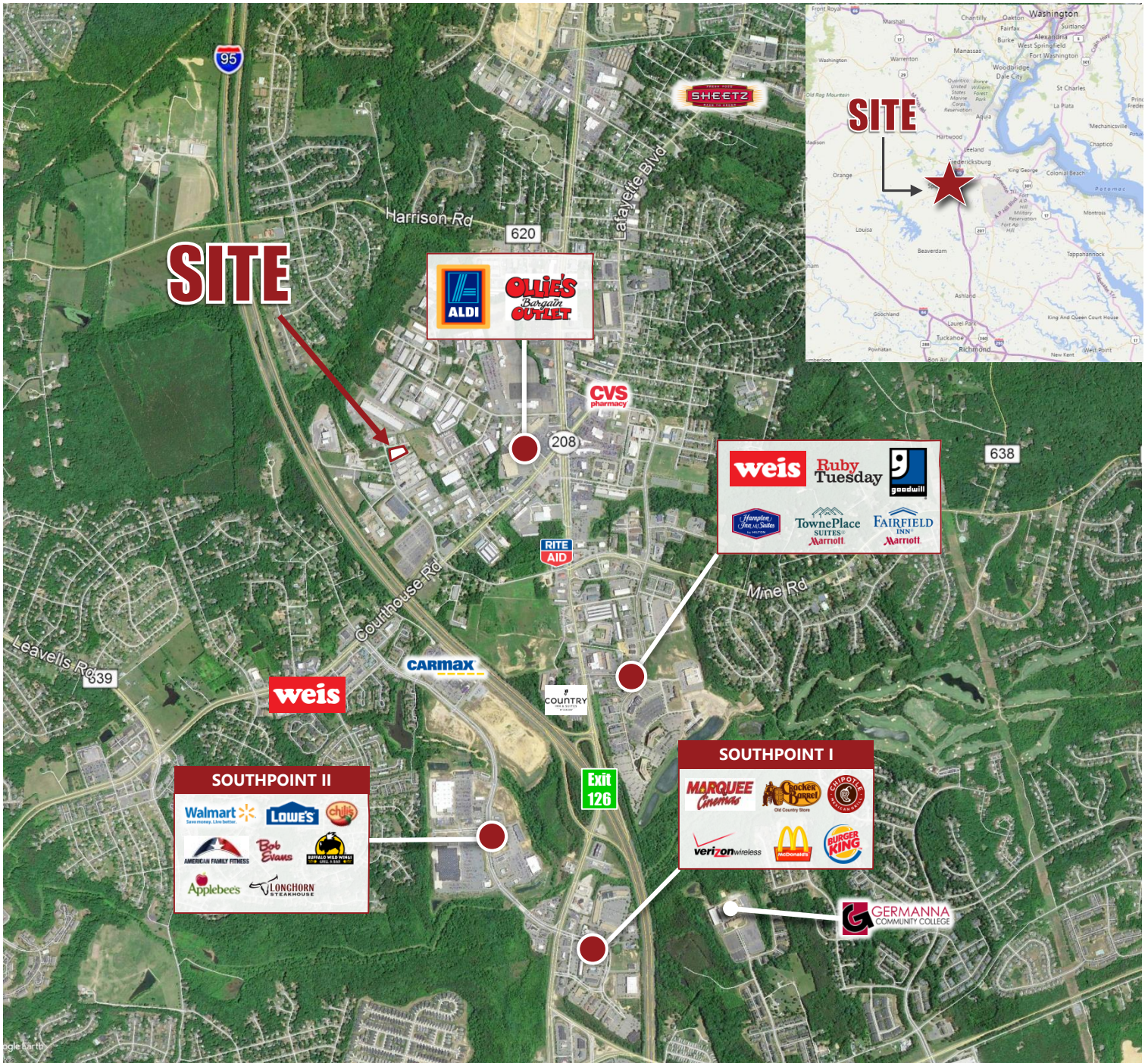
Joshua Grady  
jgrady@jarrellinc.com

# HOUSER DRIVE LOT

10925 Houser Drive, Fredericksburg, VA 22408

# Jarrell Properties

Real Estate Development



## CONTACT

Joshua Grady  
jgrady@jarrellinc.com

 Jarrell Properties, Inc.

jarrellinc.com | 540.899.3826  
1300 Princess Anne St, Fredericksburg, VA 22401