

855

Douglas Street

El Segundo, CA 90245

thinklogic

4,700 SF OFFICE SPACE AVAILABLE

CBRE

Property Highlights



4,700 SF 2nd Floor
Office Space Available



Free Surface Parking -
3 per 1,000 SF



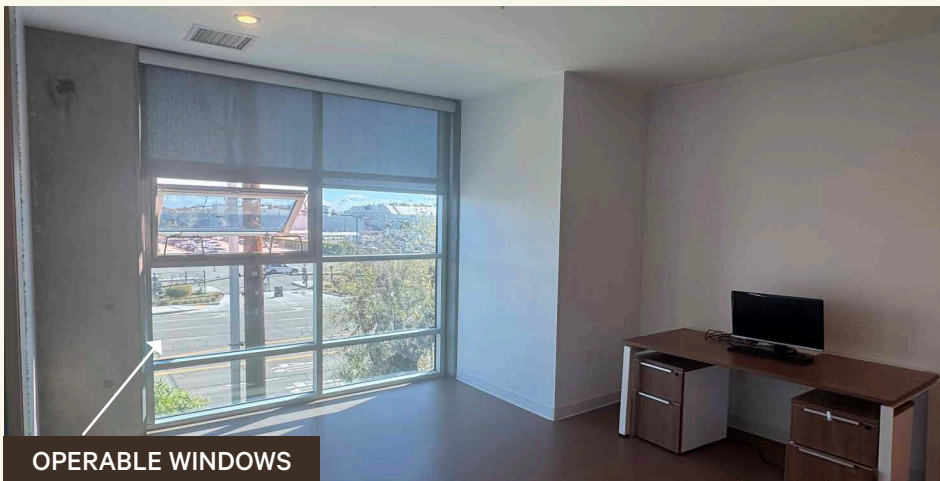
Operable Windows



Building Signage
Available



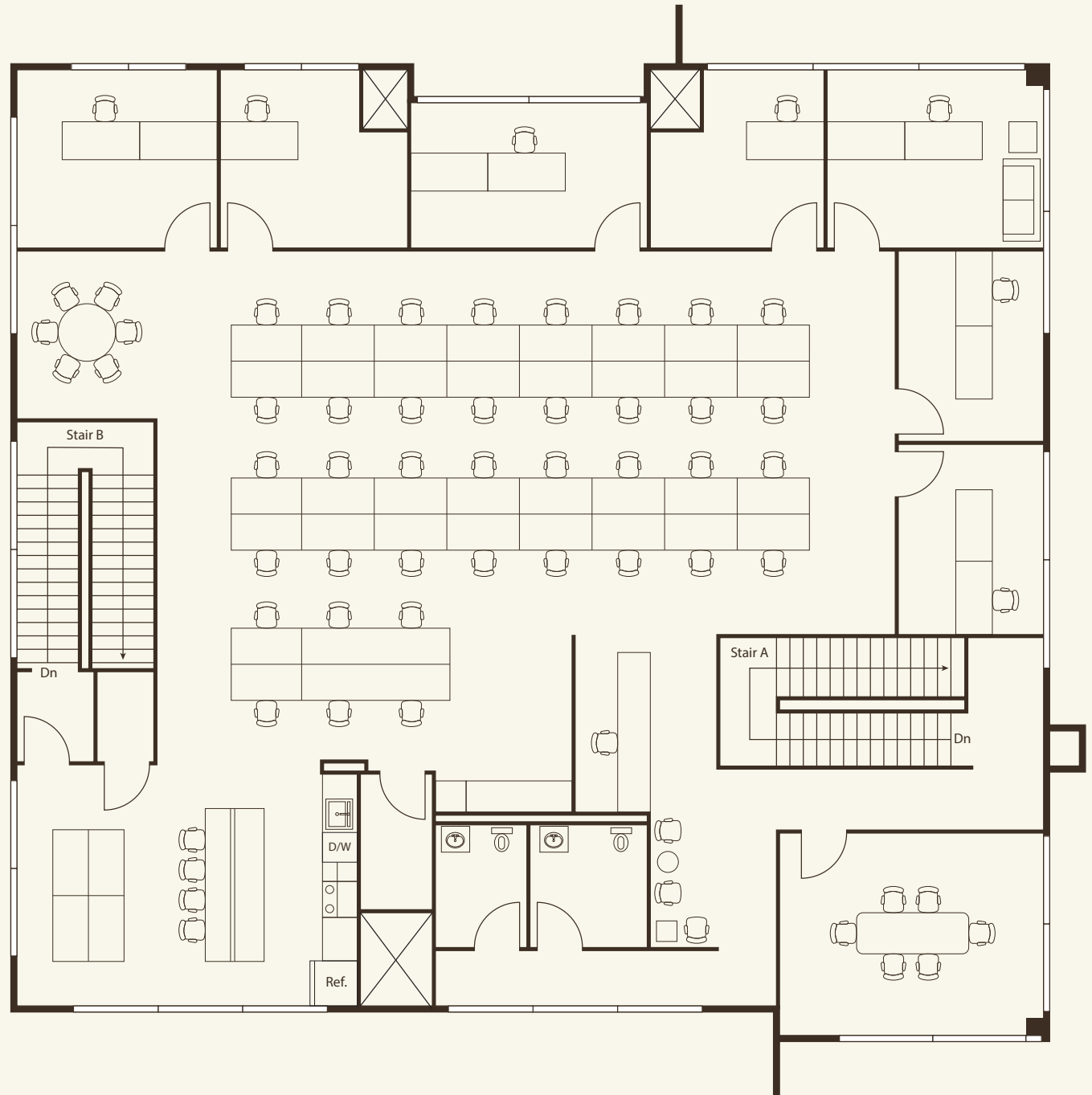
Furniture Negotiable



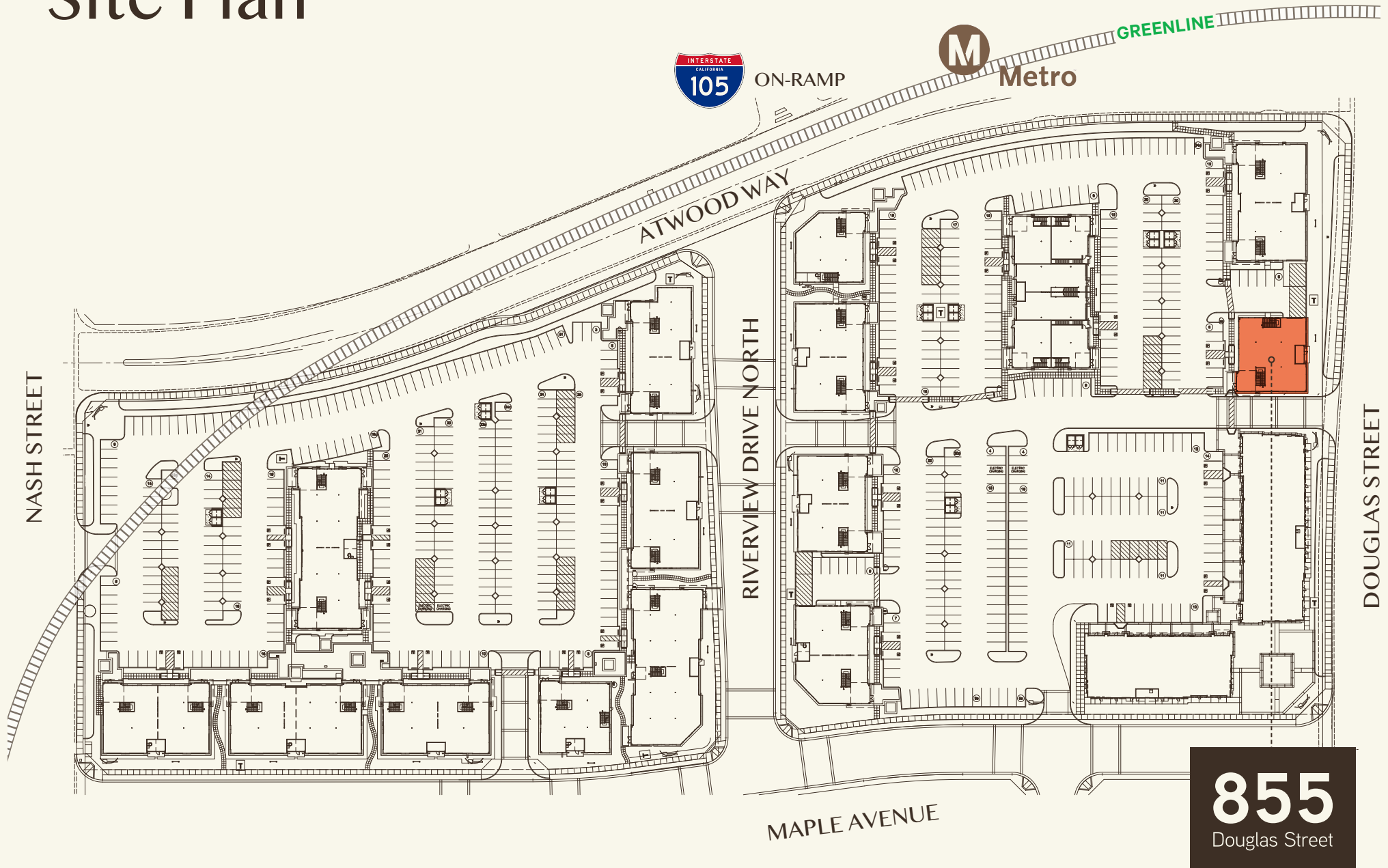
OPERABLE WINDOWS



Floor Plan



Site Plan



The Local Area

Los Angeles
International Airport



855 Douglas, El Segundo, CA 90245



For More Information, Please Contact:

GREGORY WALSH

First Vice President

310 363 4925

gregory.walsh@cbre.com

Lic. 01417008

CBRE

© 2025 CBRE, Inc. All rights reserved. This information has been obtained from sources believed reliable but has not been verified for accuracy or completeness. CBRE, Inc. makes no guarantee, representation or warranty and accepts no responsibility or liability as to the accuracy, completeness, or reliability of the information contained herein. You should conduct a careful, independent investigation of the property and verify all information. Any reliance on this information is solely at your own risk. CBRE and the CBRE logo are service marks of CBRE, Inc. All other marks displayed on this document are the property of their respective owners, and the use of such marks does not imply any affiliation with or endorsement of CBRE. Photos herein are the property of their respective owners. Use of these images without the express written consent of the owner is prohibited.