



**AVAILABLE FOR LEASE OFFICE SUITES IN
HISTORIC DOWNTOWN**

904 PRINCESS ANNE STREET

FREDERICKSBURG, VA 22401

JOBY SALICETI

Senior Associate

540 322 4142

joby.saliceti@thalhimer.com

SHARON SCHMIDT

Senior Associate

540 322 4155

sharon.schmidt@thalhimer.com



**CUSHMAN &
WAKEFIELD**

THALHIMER

FEATURES

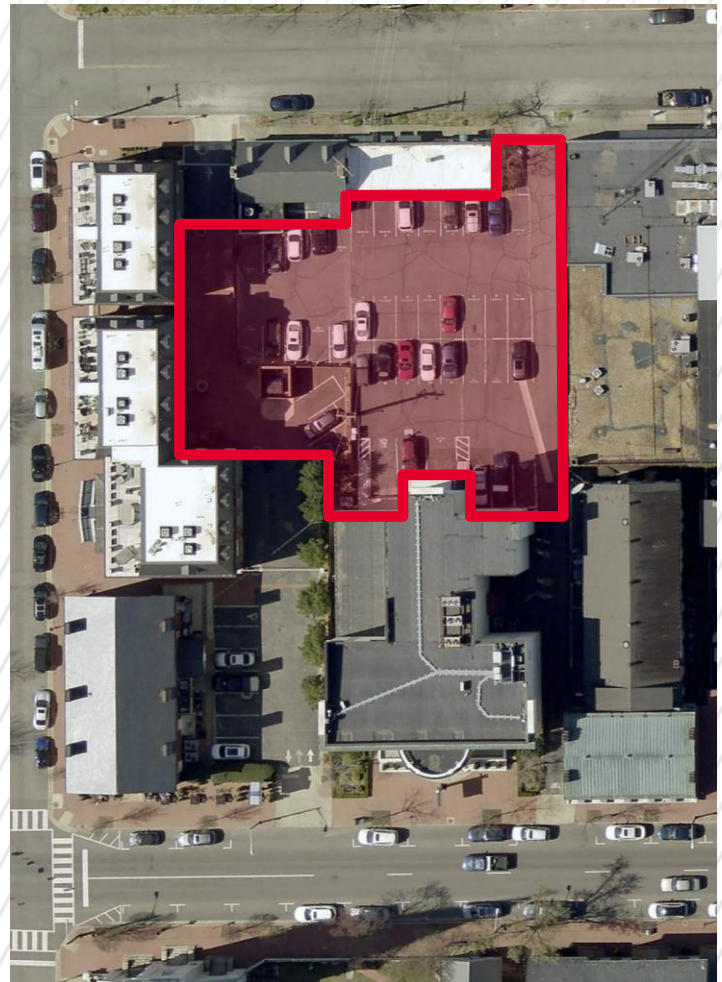


Property Features

Building Size:	28,650
Available Spaces:	Suite 303B: 100 SF/\$750 Mo. Suite 306: 208 SF/\$550 Mo.
Parking:	0.70 / 1,000 Sq. Ft.
Timing:	Available Immediately

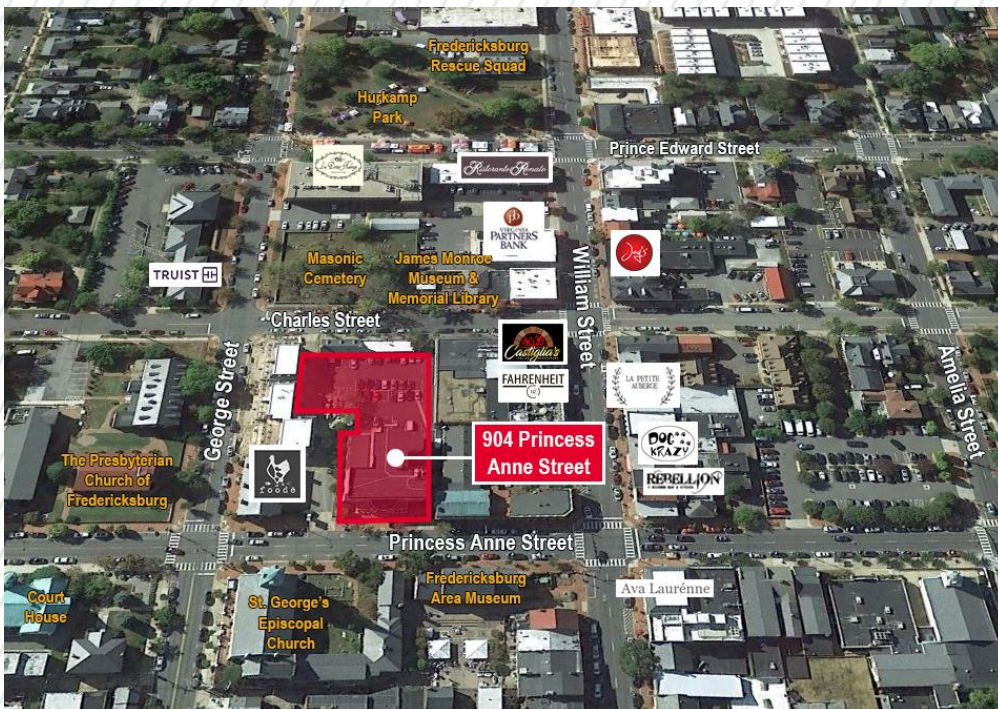
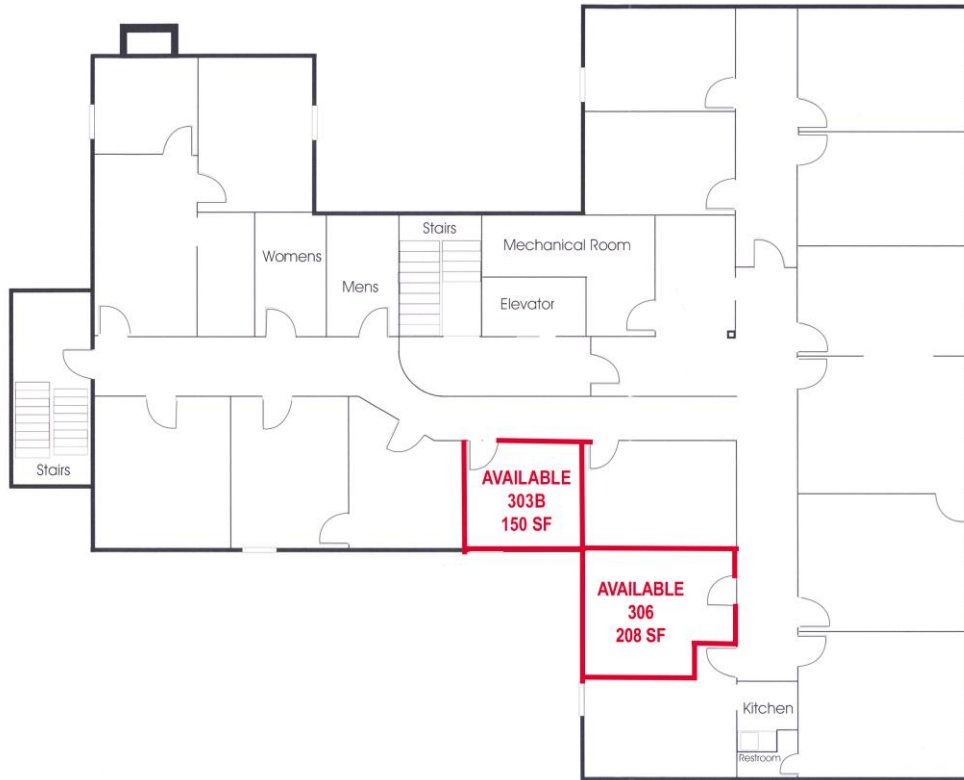
***Located in the heart of Historic
Downtown Fredericksburg***

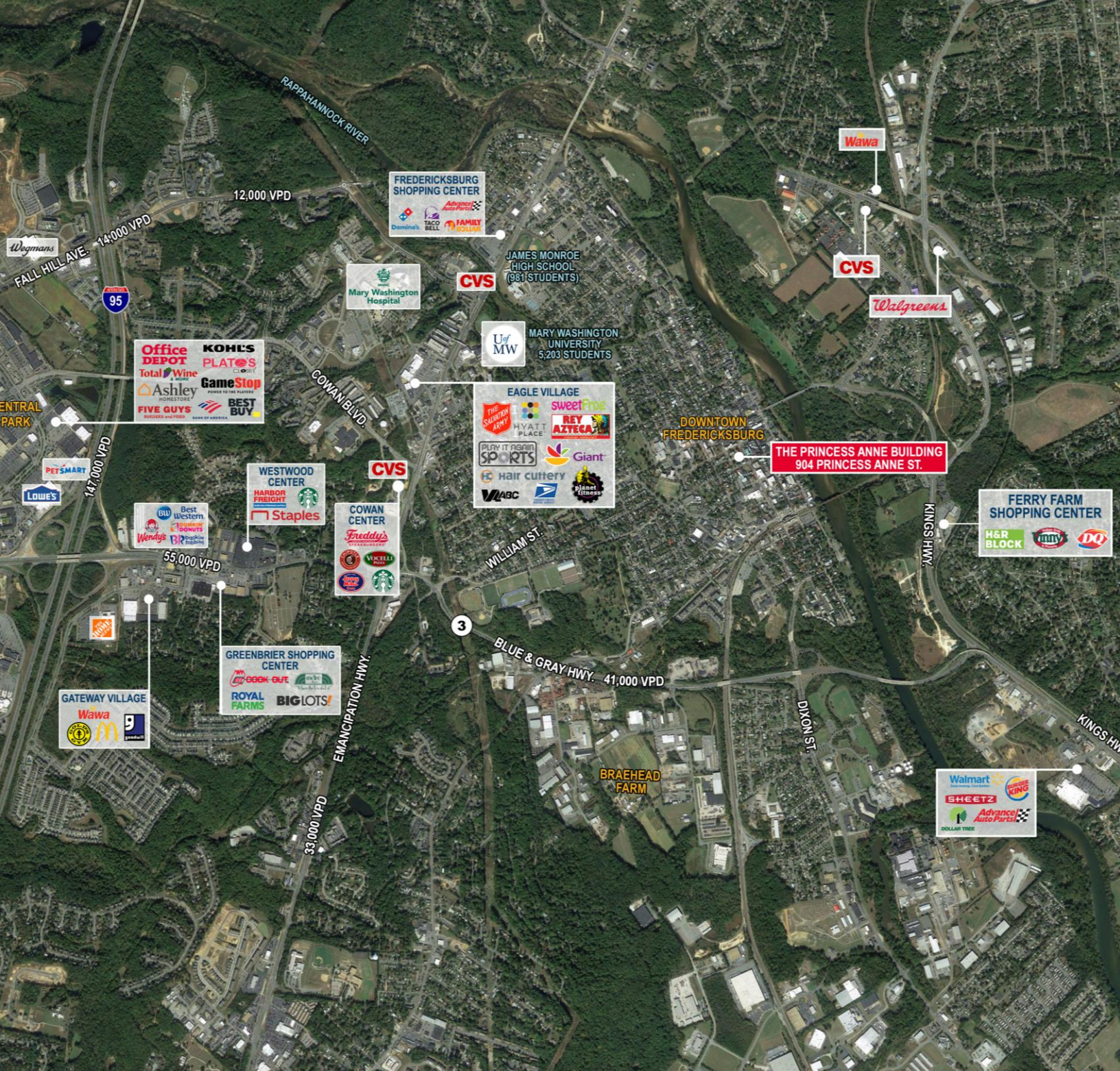
- Office suites available only two blocks from the courthouse
- Utilities included in the rent
- Shared kitchen and elevator available for use
- Off street parking on-site



FLOOR PLAN

100 – 308 SF AVAILABLE IMMEDIATELY





JOBY SALICETI

Senior Associate

540 322 4142

joby.saliceti@thalhimer.com

SHARON SCHMIDT

Senior Associate

540 322 4155

sharon.schmidt@thalhimer.com



**CUSHMAN &
WAKEFIELD**

THALHIMER

Independently Owned and Operated / A Member of the Cushman & Wakefield Alliance

Cushman & Wakefield | Thalhimer © 2025. No warranty or representation, express or implied, is made to the accuracy or completeness of the information contained herein, and same is submitted subject to errors, omissions, change of price, rental or other conditions, withdrawal without notice, and to any special listing conditions imposed by the property owner(s). As applicable, we make no representation as to the condition of the property (or properties) in question.