

NORTH OF THE DISTRICT RETAIL LAND

FOR GROUND LEASE OR BTS



PROPERTY DETAILS

3634 W. 11400 S., South Jordan, UT 84095

- PRIME PROPERTY! PRIME LOCATION!
- Raw Land For Ground Lease or BTS
- 0.53 Acre Parcel
- Drive-Thru Opportunity
- Located in the Main Retail Corridor of South Jordan on the North Side of The District in South Jordan
- Located at a Signalized Intersection on 11400 South
- High Growth, High Income, and High Traffic Counts!
- Nearby Retailers: Harmon's, Target, Hobby Lobby, JC Penny, McDonald's, Grease Monkey, 7-Eleven, MoBettah's, Jamba Juice, DownEast, LHM Megaplex Theatres and many others!
- Don't Miss Out on this Great Location!
- Contact Agent for More Information and Pricing!

2025 DEMOS



EST. POPULATION

1 MILE » **17,106**
3 MILE » **119,841**
5 MILE » **257,196**



EST. HOUSEHOLDS

1 MILE » **5,081**
3 MILE » **36,639**
5 MILE » **79,150**



EST. AVERAGE HH INCOME

1 MILE » **\$184,942**
3 MILE » **\$163,772**
5 MILE » **\$151,483**

NEWMARK

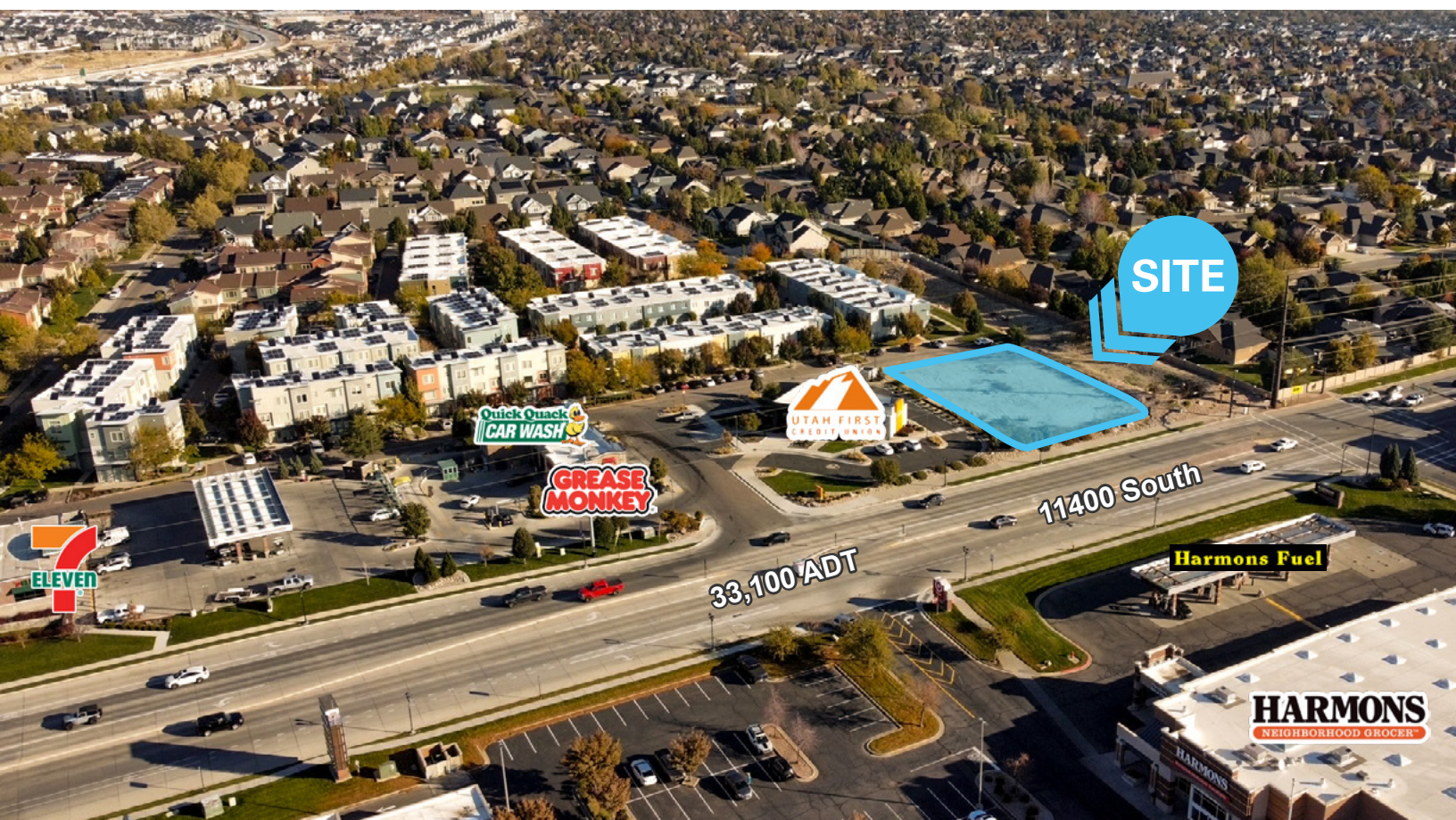
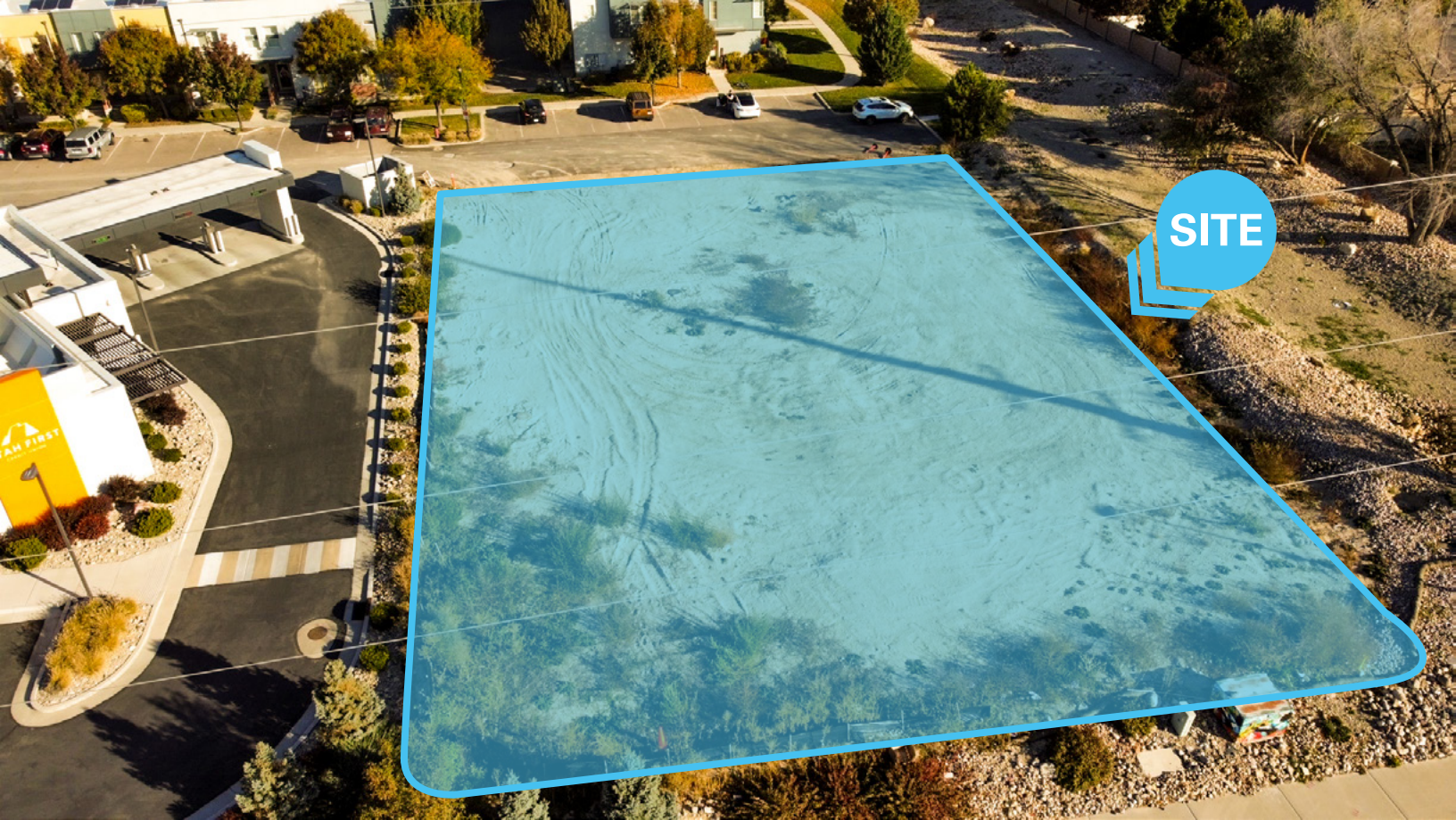
MOUNTAIN WEST

ADAM LEWIS

al@newmarkmw.com
direct 801.746.4708
[View Profile](#)

**FULL SERVICE
COMMERCIAL REAL ESTATE**

312 East South Temple
Salt Lake City, Utah 84111
Office 801.456.8800
www.newmarkmw.com

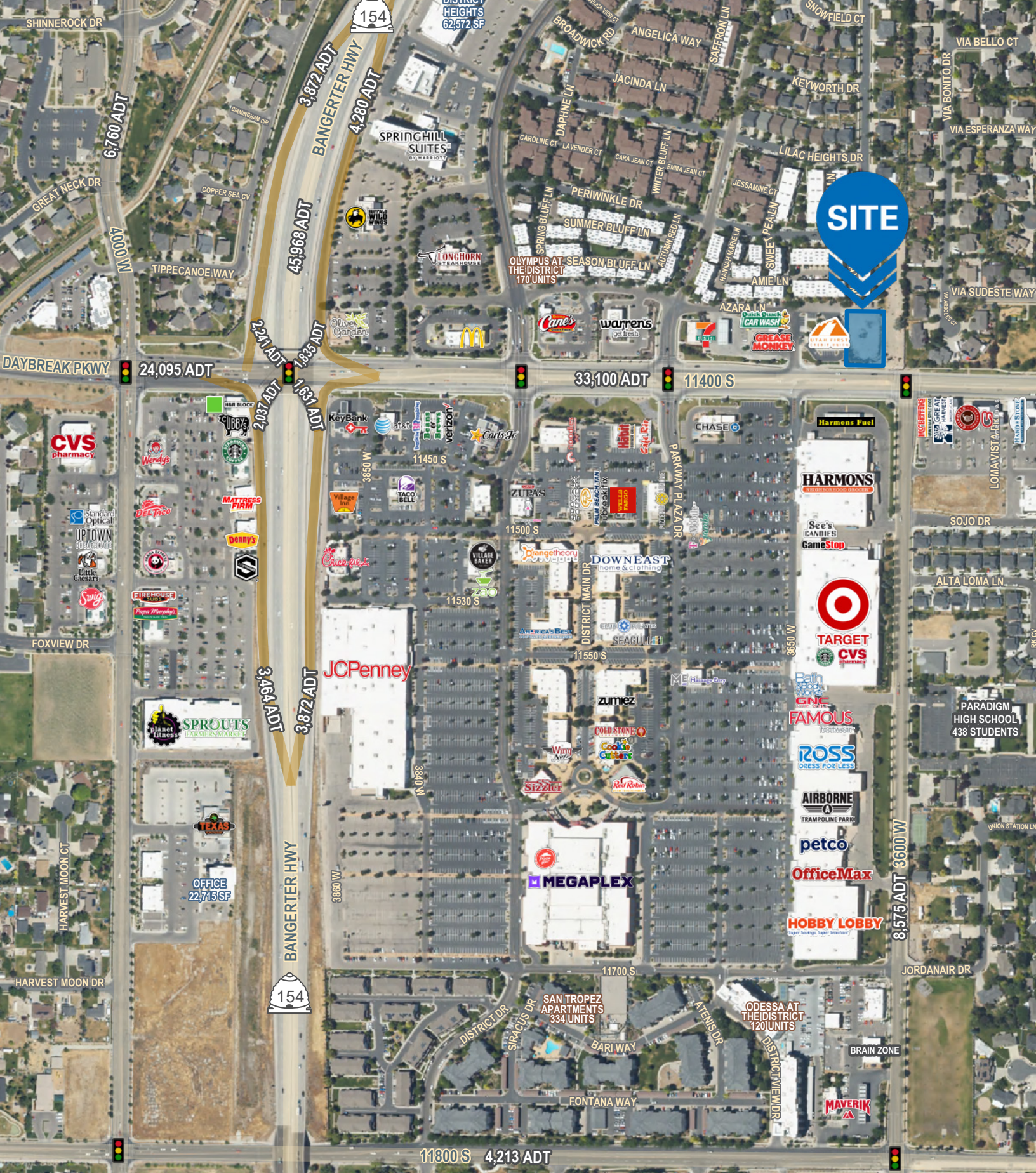


NEWMARK

MOUNTAIN WEST

ADAM LEWIS
al@newmarkmw.com
direct 801.746.4708
[View Profile](#)

**FULL SERVICE
COMMERCIAL REAL ESTATE**
312 East South Temple
Salt Lake City, Utah 84111
Office 801.456.8800
www.newmarkmw.com



NEWMARK
 MOUNTAIN WEST

ADAM LEWIS
 al@newmarkmw.com
 direct 801.746.4708
[View Profile](#)

**FULL SERVICE
 COMMERCIAL REAL ESTATE**
 312 East South Temple
 Salt Lake City, Utah 84111
 Office 801.456.8800
www.newmarkmw.com