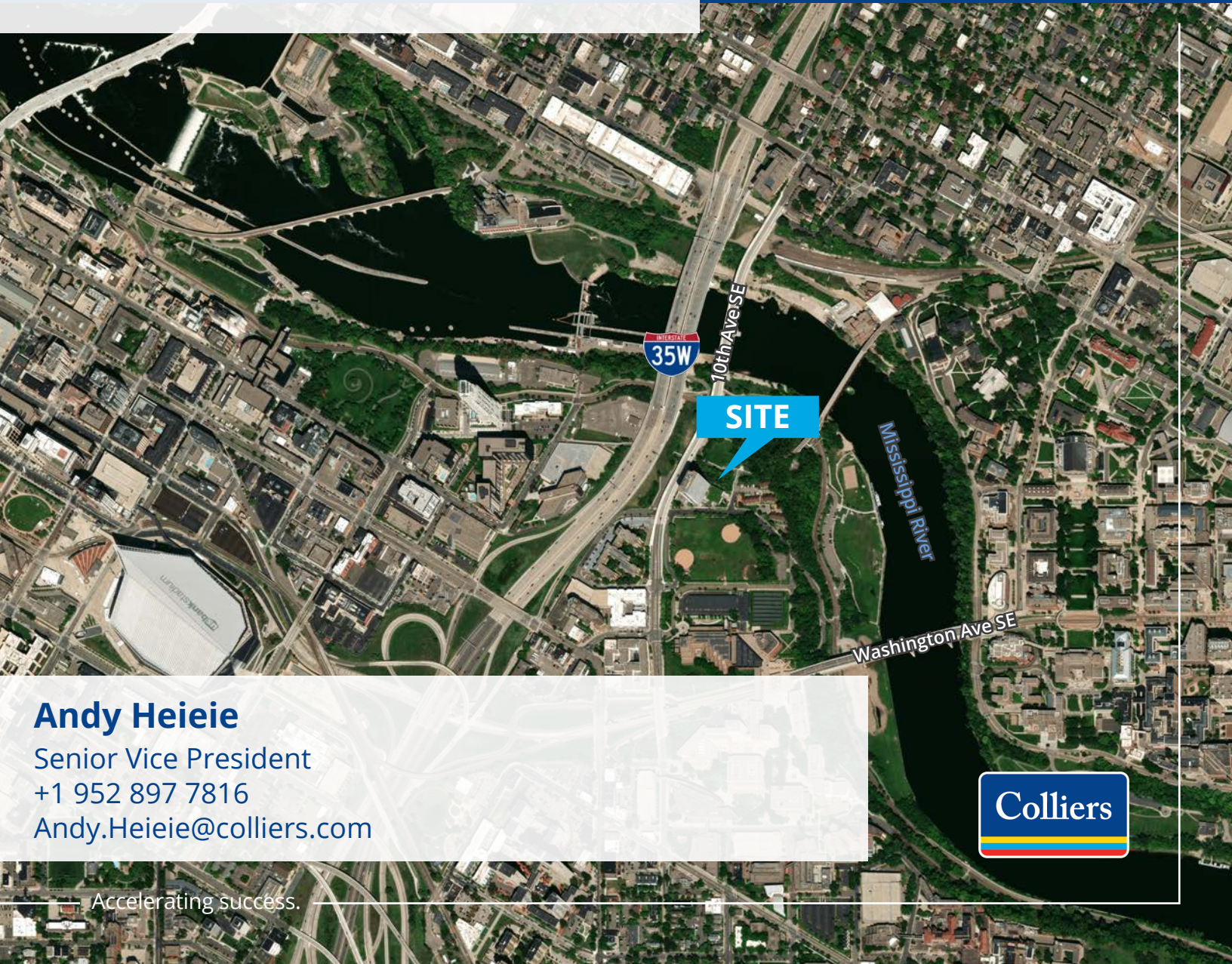


Land For Sale

±.31 Acres

21 20th Ave S
Minneapolis, MN 55454



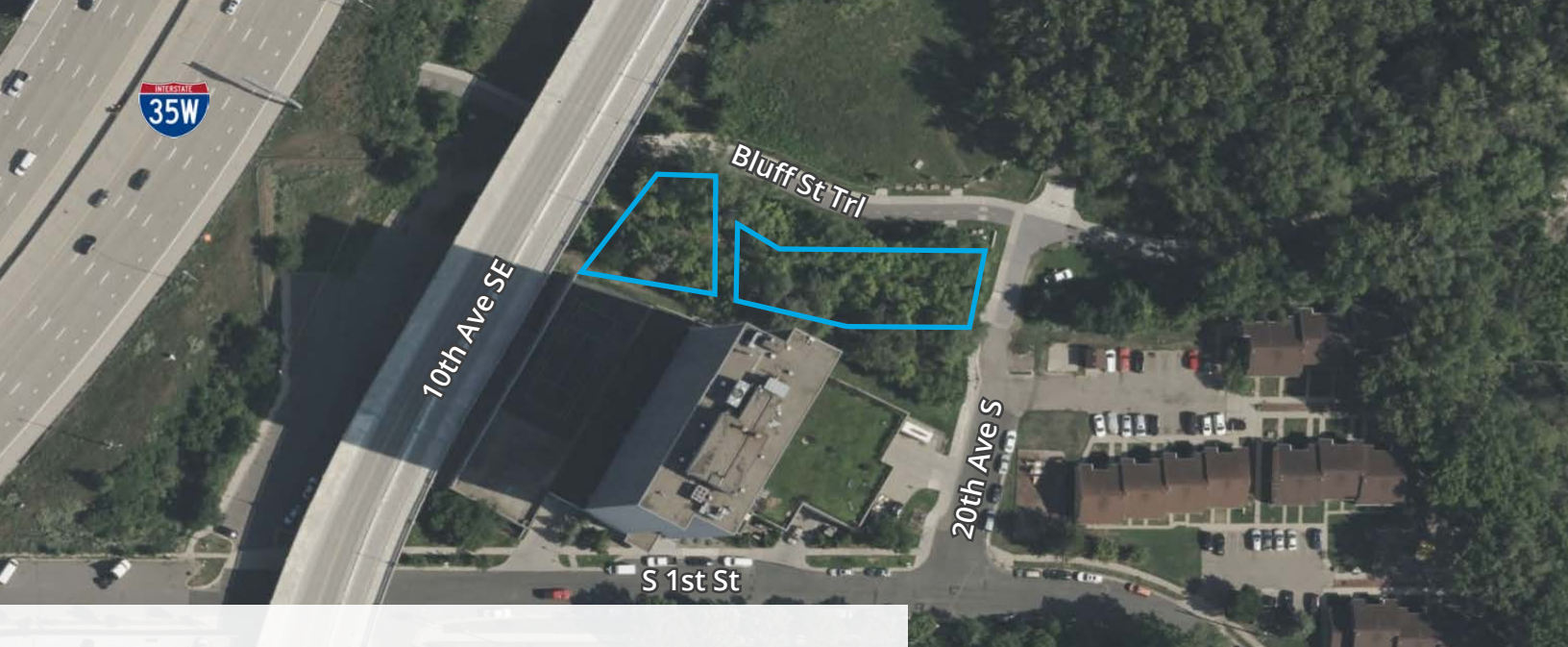
Andy Heieie

Senior Vice President

+1 952 897 7816

Andy.Heieie@colliers.com

Colliers



Property Overview

- Approximately 0.31 acres (PID 25-029-24-22-0387)
- Primary Zoning District: RM3: Residence and Institutional
- Overlay Zoning Districts: University Area (UA) and Mississippi River Critical Area (MR)
- Conveniently located directly on the Bluff Street Bikeway located within Bluff Street Park
- ASKING PRICE: NEGOTIABLE

The Subject Property is within walking distance (or short drive) from:

- University of Minnesota Campus
- M Health Fairview Medical Center
- US Bank Stadium
- Stone Arch Bridge and St. Anthony Falls
- Gold Medal Park and West River Parkway



Andy Heieie

Senior Vice President
+1 952 897 7816
Andy.Heieie@colliers.com

1600 Utica Avenue South, Suite 300
St Louis Park, MN 55416
P: +1 952 897 7700
colliers.com/msp