



Retail for lease

5300 Lyndale Ave S.
Minneapolis, MN 55419

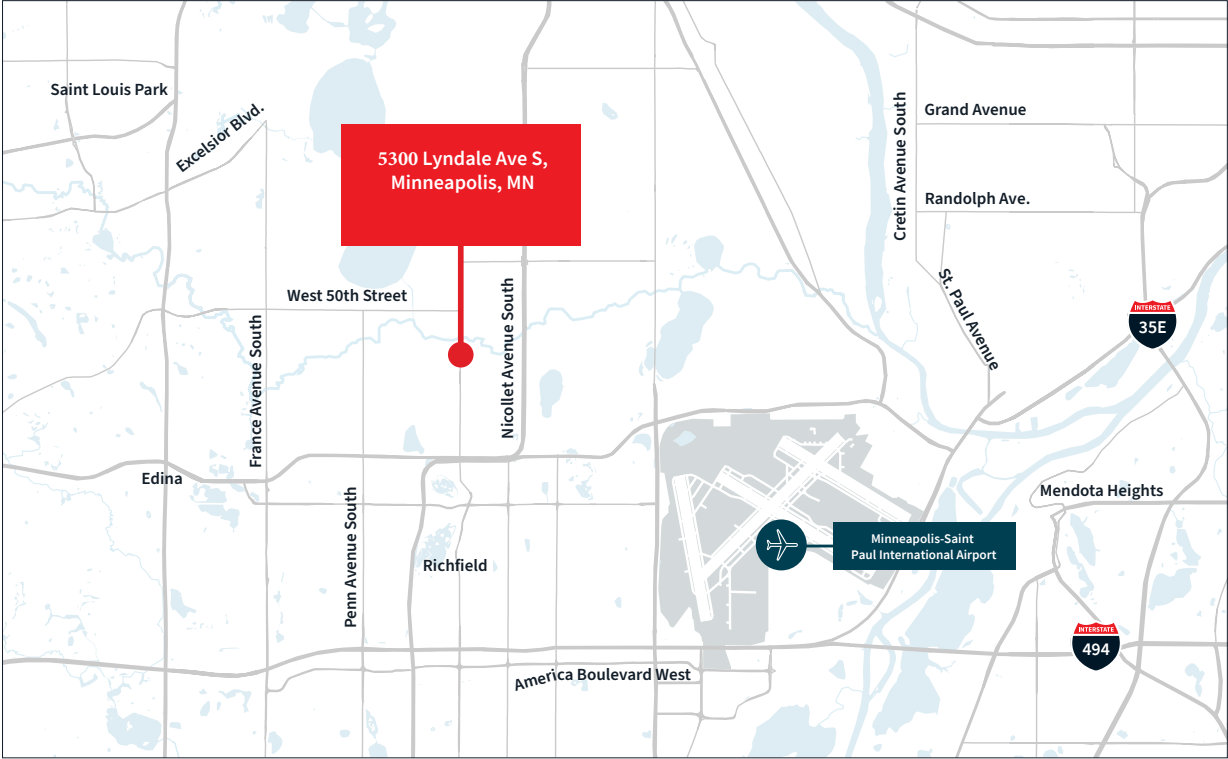
Contact:
Dan Kerkinni
651-269-3119

PROPERTY HIGHLIGHTS

- Direct access to **30** off-street parking stalls
- Located in an affluent neighborhood in South Minneapolis
- Historic building located near Minnehaha Creek
- High volume area with fine dining, fast casual, retail, residential, and office spaces

Location	5300 Lyndale Ave S Minneapolis, MN 55419
Description	12,176 s.f. building
Available	<ul style="list-style-type: none">• Firsts Floor Retail: Up to 3,000 s.f. available immediatly
Expenses	
CAM/RE taxes	\$7.50 PSF
Traffic counts	
S Lyndale Ave	12,000 vpd
W 54th St	8,000 vpd
Lease rates	Contact broker

* Source: MNDOT 2023 Study Averages



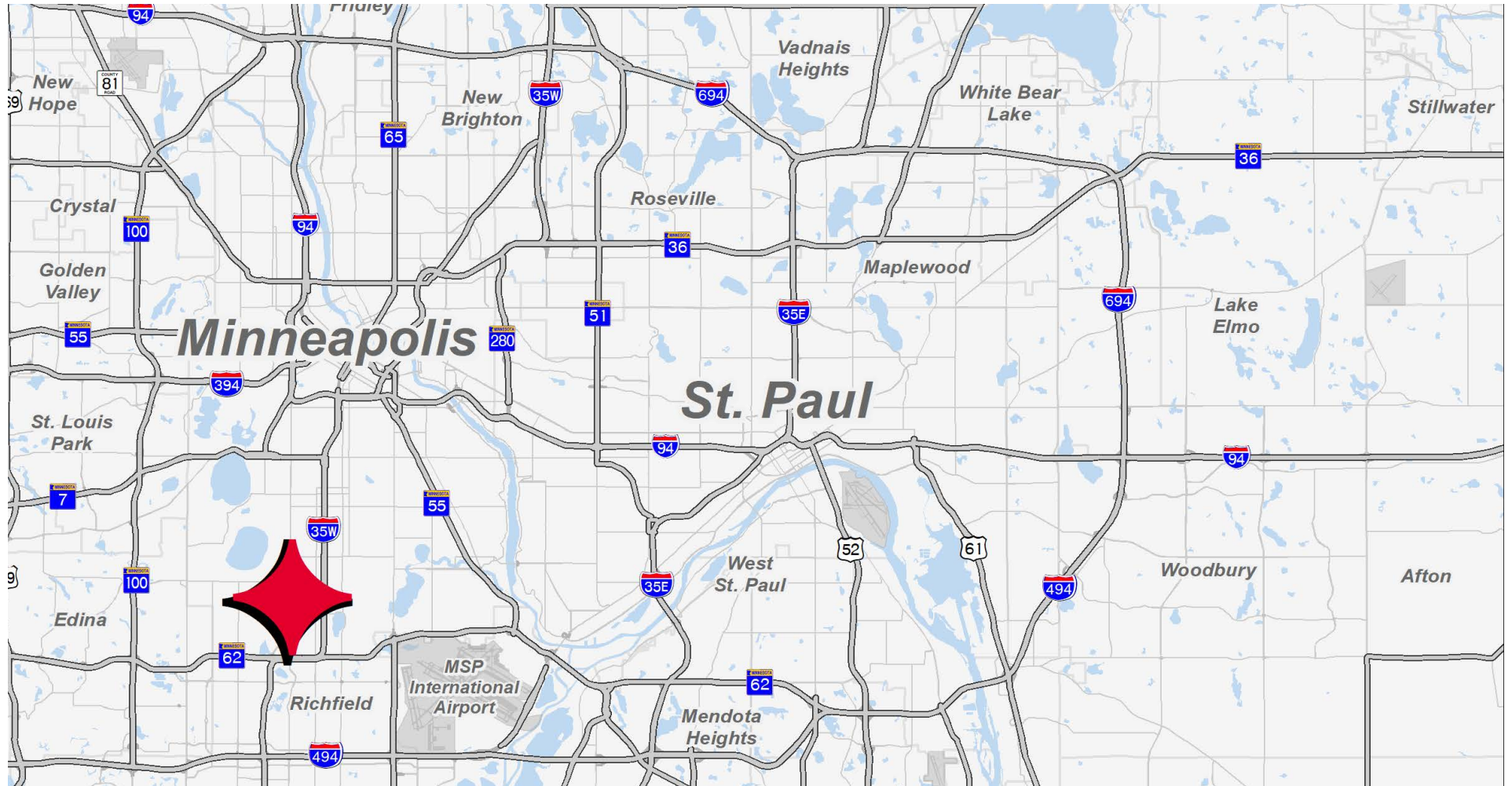
Area tenants



Radius	1 mile	3 miles	5 miles
Population	19,225	166,249	419,072
Median HH income	\$153,369	\$105,617	\$86,118
Average HH income	\$207,448	\$151,187	\$127,895

* Source: 2024 Esri Forecasts based on The Census 2010 Summary Files

5300 Lyndale Avenue South | Minneapolis, MN



DEMOGRAPHICS (WITHIN 5 MILES)

423,645

Population

\$82,622

Median Household Income

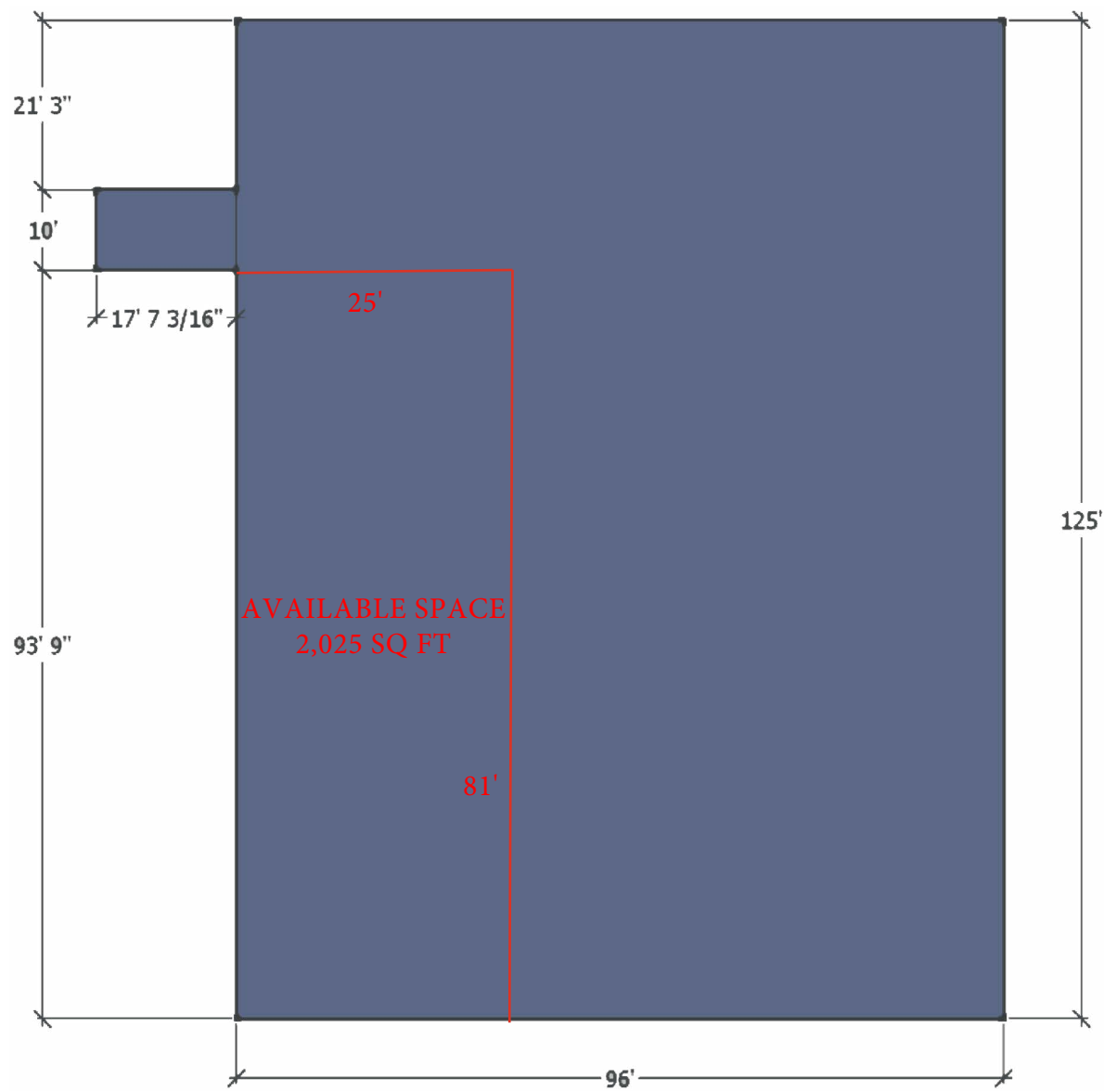
357,909

Daytime Population

LOCATION
MAP

12,176 SF

[CLICK TO VIEW VIRTUAL TOUR](#)



FLOOR
PLAN



LOCATION
AERIAL

CONTACT INFORMATION

DAN KERKINNI

daniel.kerkinni@gmail.com

+1 651 269 3119