

HEAVY POWER | ± 2,400 AMPS AVAILABLE

630 FOREST STREET

Marlborough, Massachusetts

INDUSTRIAL / FLEX / OFFICE

13,054 SF Available Immediately



630 FOREST STREET

Marlborough, Massachusetts

INDUSTRIAL/FLEX/OFFICE SPACE AVAILABLE

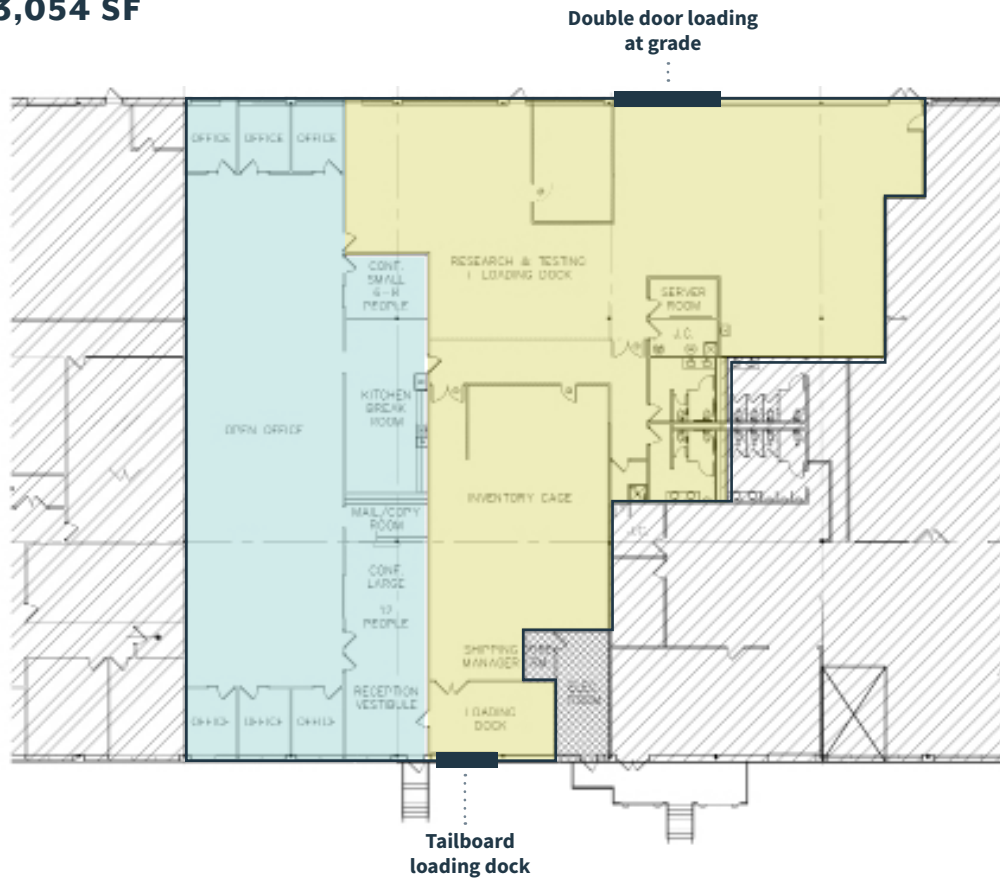


PROPERTY SPECIFICATIONS

BUILDING TYPE:	Industrial/Flex
YEAR BUILT:	1990
AVAILABLE SPACE:	13,054 SF
TIMING:	Vacant/Available Immediately
BUILDING SIZE:	50,110 SF
PARKING:	2.7/1,000 SF (Ability to add additional parking to create 5.9/1,000 SF for new tenant)
CLEAR HEIGHT:	16.5' to Joist 19.5' to Deck Drop Ceiling Height: 9'
LOADING:	One (1) Tailboard Loading Dock Double Doors at Grade (Ability to add garage door loading at rear of buildig for partial cross dock)
COLUMN SPACING:	40' x 42'
POWER:	3-phase 4 wire, 480/277 volts 3,000 amps switchgear. Exterior pad mount transformer is 1,000 kVA. Available power is approximatley 1,500 amps with the ability to increase to ± 2,400 amps.
HVAC:	Throughout Entire Premises
UTILITIES:	Electric: National Grid Water/Sewer: Municipal
SIGNAGE:	Exterior Building Signage Available

FIRST FLOOR | 13,054 SF

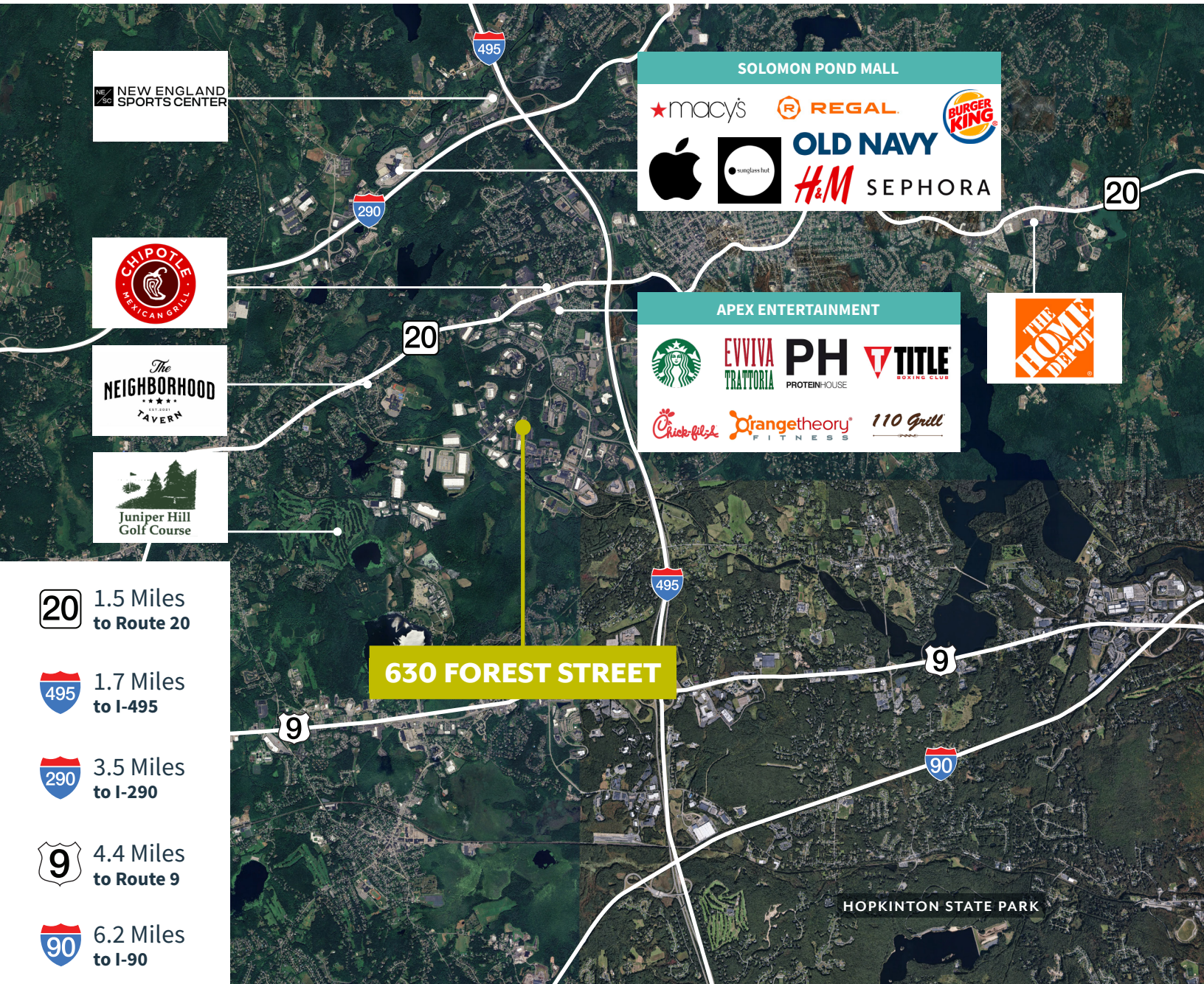
- OFFICE
- FLEX



FOR LEASE | INDUSTRIAL / FLEX / OFFICE


630 FOREST STREET

Marlborough, Massachusetts




 1.5 Miles to Route 20

 1.7 Miles to I-495

 3.5 Miles to I-290

 4.4 Miles to Route 9

 6.2 Miles to I-90

630 FOREST STREET

HOPKINTON STATE PARK

CONTACT US TO ARRANGE A TOUR

PATRICK GRADY

781.820.9881

pgrady@hunnemanre.com

BILL RAND

617.457.3336

brand@hunnemanre.com

HENRY BIRMINGHAM

508.903.7627

hbirmingham@hunnemanre.com



303 Congress Street, Boston, MA 02210 617.457.3400 www.hunnemanre.com

©2026 Hunneman. All rights reserved. All information has been obtained from sources believed reliable but no warranty or representation is verified for accuracy or completeness. Caution and independent investigation of property and information should be verified. Reliance on this information is at your own risk.