



# FOR LEASE

28913-28997 Woodward Avenue  
Berkley, MI

## Property Highlights

- 1,600 SF (32' x 50')
- 2,260 SF Endcap
- Pylon Signage Available
- Traffic Counts of 58,000 on Woodward and 17,000 on 12 Mile
- Join Crispelli's, Great Clips, and H&R Block
- Zoning: Gateway Corridor

## CONTACT US



**Brian Whitfield**

248 226 1646

brian.whitfield@colliers.com



**Lou Frango**

248 226 1678

lou.frango@colliers.com

**Colliers Detroit**

400 W 4<sup>th</sup> Street, Suite 350

Royal Oak, MI 48067

colliers.com/detroit





FOR LEASE

# Aerial Map





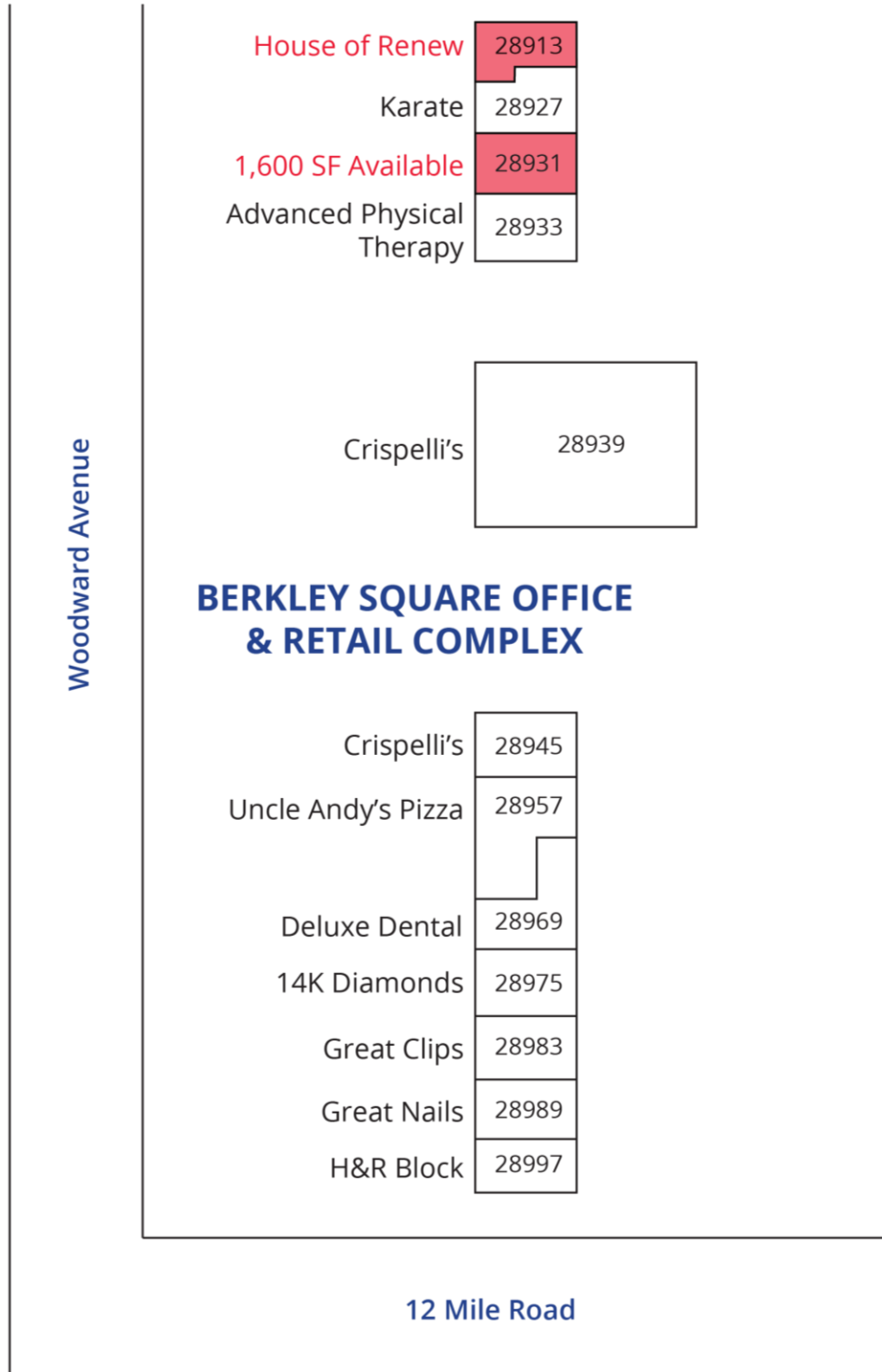
FOR LEASE

## Exterior or Interior Photos



# Floor Plan

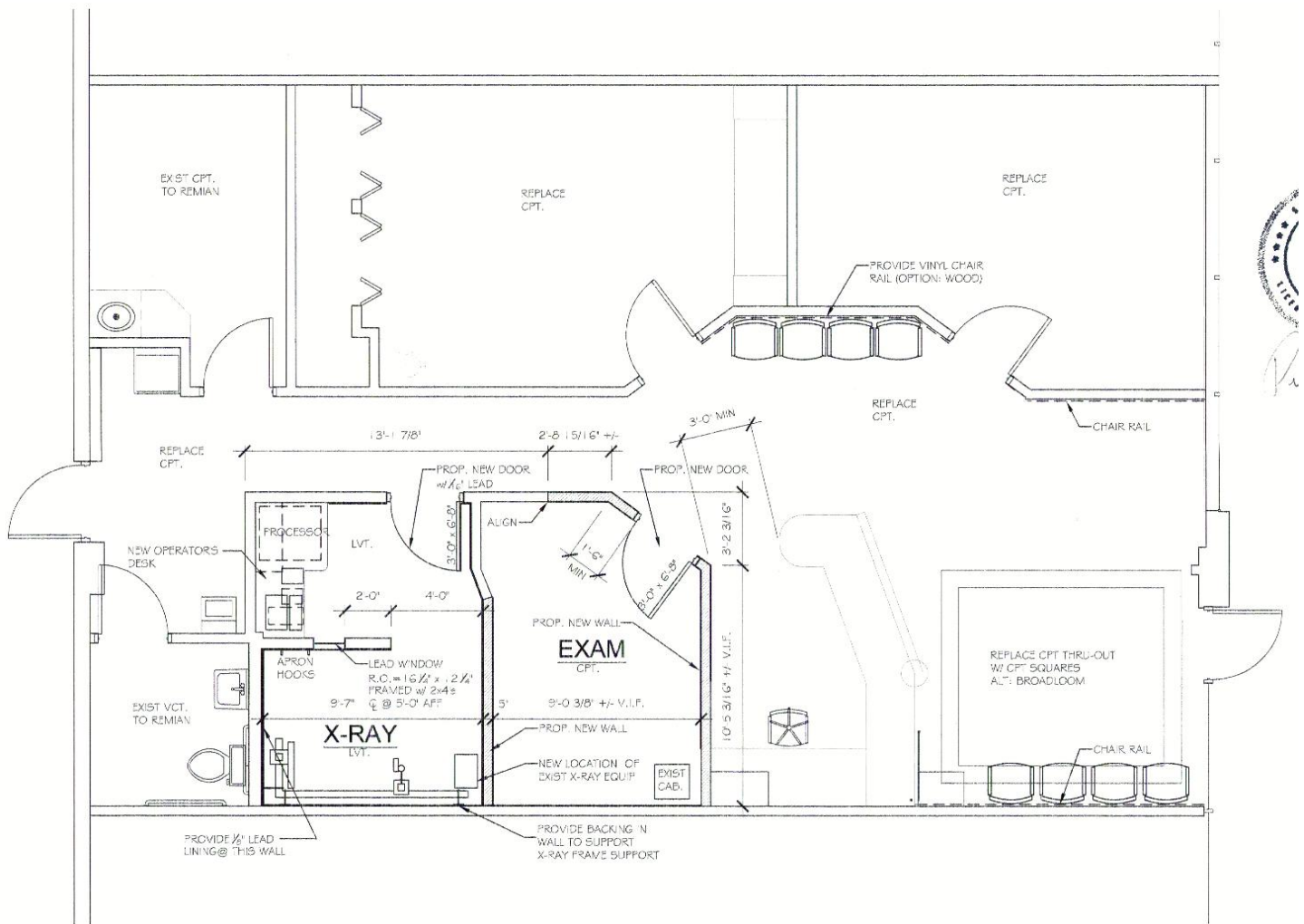
Suite # - Square Feet



FOR LEASE

# Floor Plan

28931 Woodward – 1,600 SF



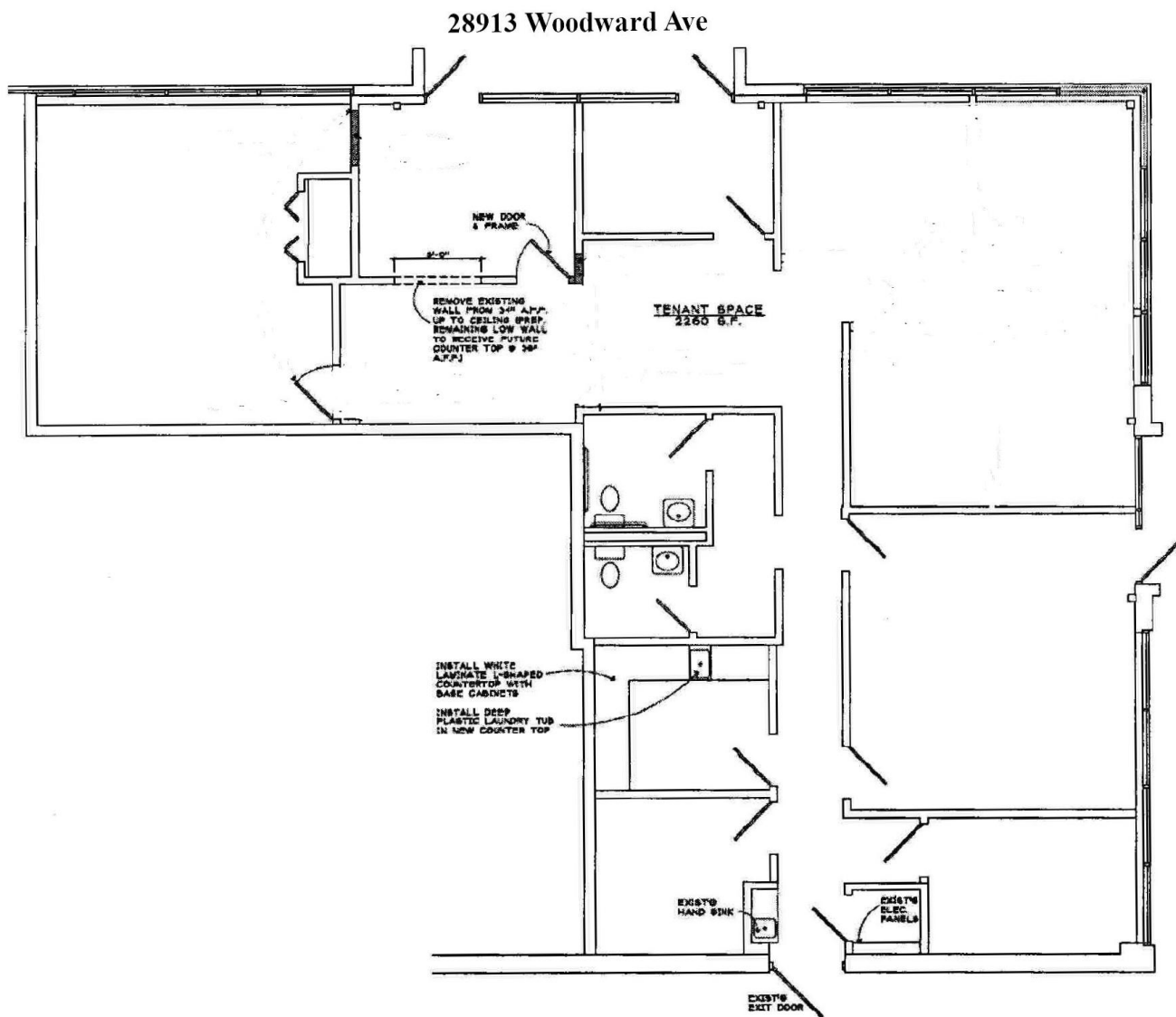
## FLOOR PLAN

SCALE: 1/4" = 1'-0"

FOR LEASE

# Floor Plan

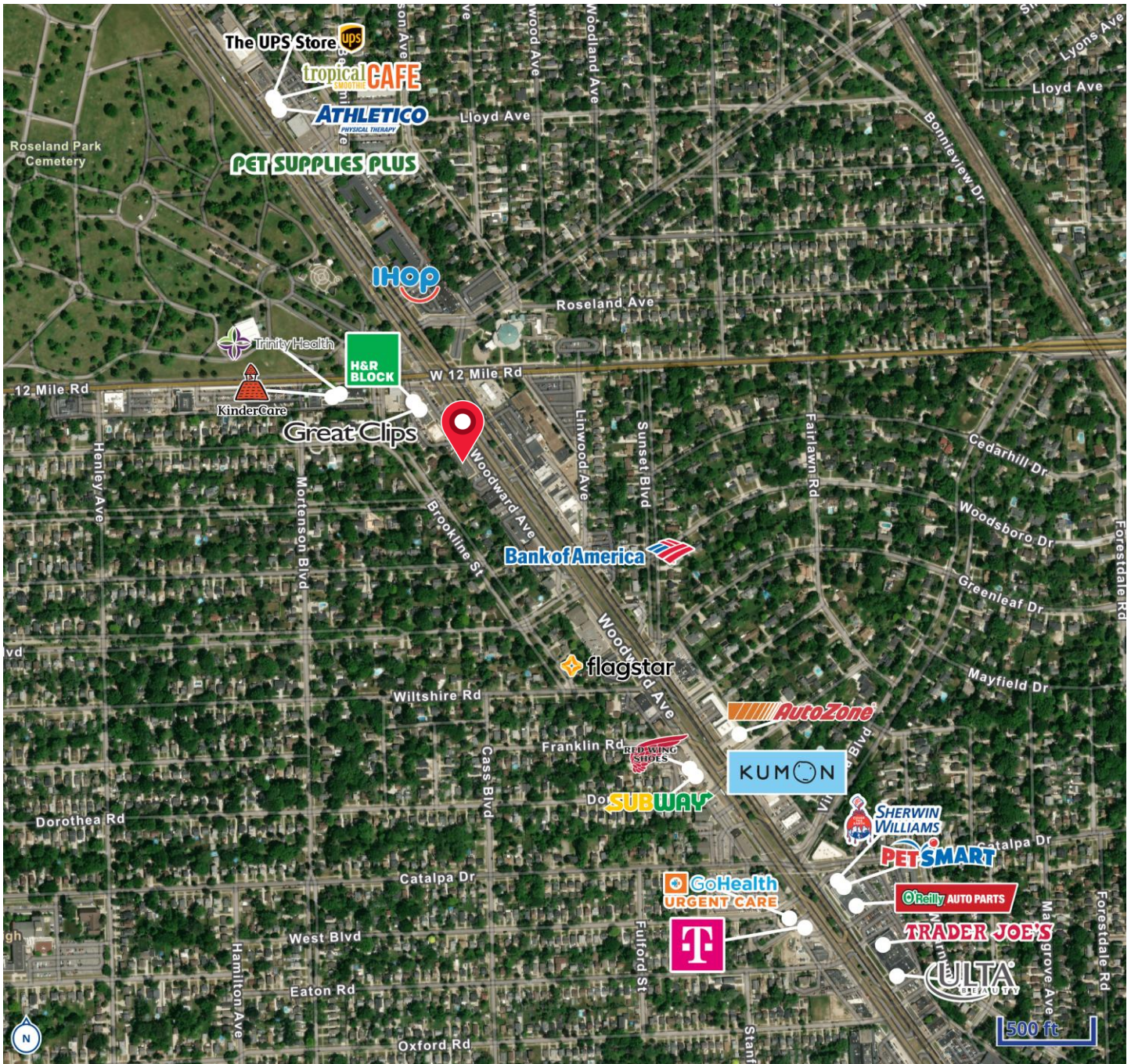
28913 Woodward – 2,260 SF





FOR LEASE

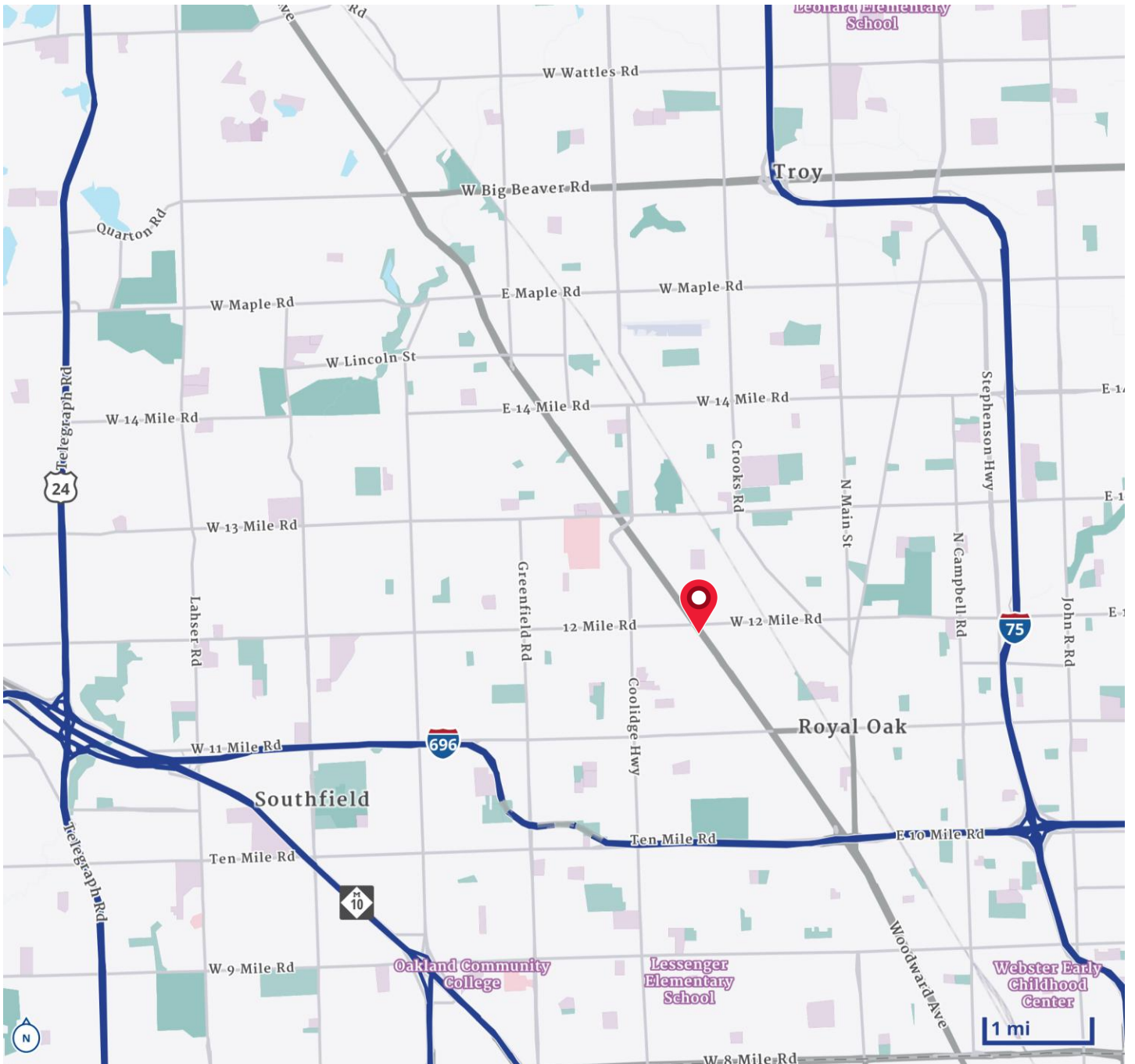
# Merchant Map





FOR LEASE

# Location Map





# Demographic

CURRENT YEAR SUMMARY	1 MILE RADIUS	3 MILE RADIUS	5 MILE RADIUS
Total Population	16,433	140,272	326,201
Total Households	7,369	64,874	147,501
Total Family Households	3,978	33,878	80,595
Average Household Size	3,978	2.15	2.19
Median Age	2.23	41.6	42.1
Population Age 25+	43.3	103,788	239,904
2010 – 2020 Population: Annual Growth Rate (CAGR)	0.16%	0.14%	0.19%
2020 – 2023 Population: Annual Growth Rate (CAGR)	0.01%	0.30%	0.22%

## 5 YEAR PROJECTED TRENDS: ANNUAL RATE

Population	-0.16%	-0.09%	0.08%
Households	0.02%	0.12%	0.33%
Families	-0.09%	-0.03%	0.14%
Median Household Income	2.22%	2.88%	2.71%

## CURRENT YEAR POPULATION BY SEX

Male Population / % Male	7,909 / 48.1%	67,770 / 48.3%	156,476 / 48.0%
Female Population / % Female	8,524 / 51.9%	72,502 / 51.7%	169,725 / 52.0%

## INCOME & HOUSEHOLDS SUMMARY

Median Household Income	\$103,248	\$88,124	\$79,345
Average Household Income	\$136,863	\$119,555	\$112,282
Per Capita Income	\$62,416	\$55,371	\$50,803

## SUMMARY BUSINESS DATA

Total Businesses	561	5,724	18,207
Total Daytime Population	12,136	129,365	383,658
Daytime Population: Workers	5,496	68,181	229,460
Daytime Population: Residents	6,640	61,184	154,198

### Data Notes:

- Household population includes persons not residing in group quarters. Average Household Size is the household population divided by total households. Persons in families include the householder and persons related to the householder by birth, marriage, or adoption.
- Income represents the preceding year, expressed in current dollars. Household income includes wage and salary earnings, interest dividends, net rents, pensions, SSI and welfare payments, child support, and alimony.
- Per Capita Income represents the income received by all persons aged 15 years and over divided by the total population.



**Brian Whitfield**  
248 226 1646  
brian.whitfield@colliers.com



**Lou Frango**  
248 226 1678  
lou.frango@colliers.com

We have no reason to doubt the accuracy of information contained herein, but we cannot guarantee it. All information should be verified prior to purchase and/or lease.