

# LIGHTHOUSE PLAZA RETAIL DEVELOPMENT

1100 North SR-198 | Salem, UT 84653



Contact

## CONNOR DEBRY

m 801.557.9119  
cdebry@legendcommercial.com

## SKYLER PETERSON, SIOR

Executive Vice President  
m 801.656.7354  
speterson@legendcommercial.com

## PARKER TAGGART

Senior Associate  
m 801.928.1815  
ptaggart@legendcommercial.com



801.930.6750 | www.legendcommercial.com  
2180 S 1300 E, Suite 240 | Salt Lake City, UT 84106

© Legend Commercial. All rights reserved. All information contained herein is from sources deemed reliable; however no representation or warranty is made to the accuracy thereof.

# LIGHTHOUSE PLAZA RETAIL DEVELOPMENT

1100 North SR-198 | Salem, UT 84653



## FOR LEASE

\$26-\$36 PSF Yearly NNN

### Phase 1

#### Building 1

- 1,276-2,656 SF
- Drive Thru

#### Building 2

- 1,221- 12,096 SF
- Nine (9) Unit Retail Building

## Property Highlights

### Phase 1

- 1,221-12,096 SF Available
- Drive Thru \$36 PSF
- End Cap \$ 28 PSF
- In-Line \$26 PSF
- Construction Drawings Complete, Ready for Construction

### Phase 2

- Available for Lease, BTS, or Ground Lease.
- Flexible Site Plan Options
- Approx. 2.3 AC Available
- Contact Agent for Additional Details

DEMOGRAPHICS	1 MILE	3 MILE	5 MILE
2025 POPULATION	3,013	36,134	86,602
2030 PROJECTED POPULATION	3,752	38,677	93,276
2025 HOUSEHOLDS	866	9,945	24,106
2025 AVG HH INCOME	\$140,666	\$136,445	\$129,056
2025 BUSINESSES	62	721	2,136
2025 DAYTIME POPULATION	405	5,069	14,940

Contact

## CONNOR DEBRY

m 801.557.9119  
cdebry@legendcommercial.com

## SKYLER PETERSON, SIOR

Executive Vice President  
m 801.656.7354  
speterson@legendcommercial.com

## PARKER TAGGART

Senior Associate  
m 801.928.1815  
ptaggart@legendcommercial.com



801.930.6750 | www.legendcommercial.com  
2180 S 1300 E, Suite 240 | Salt Lake City, UT 84106

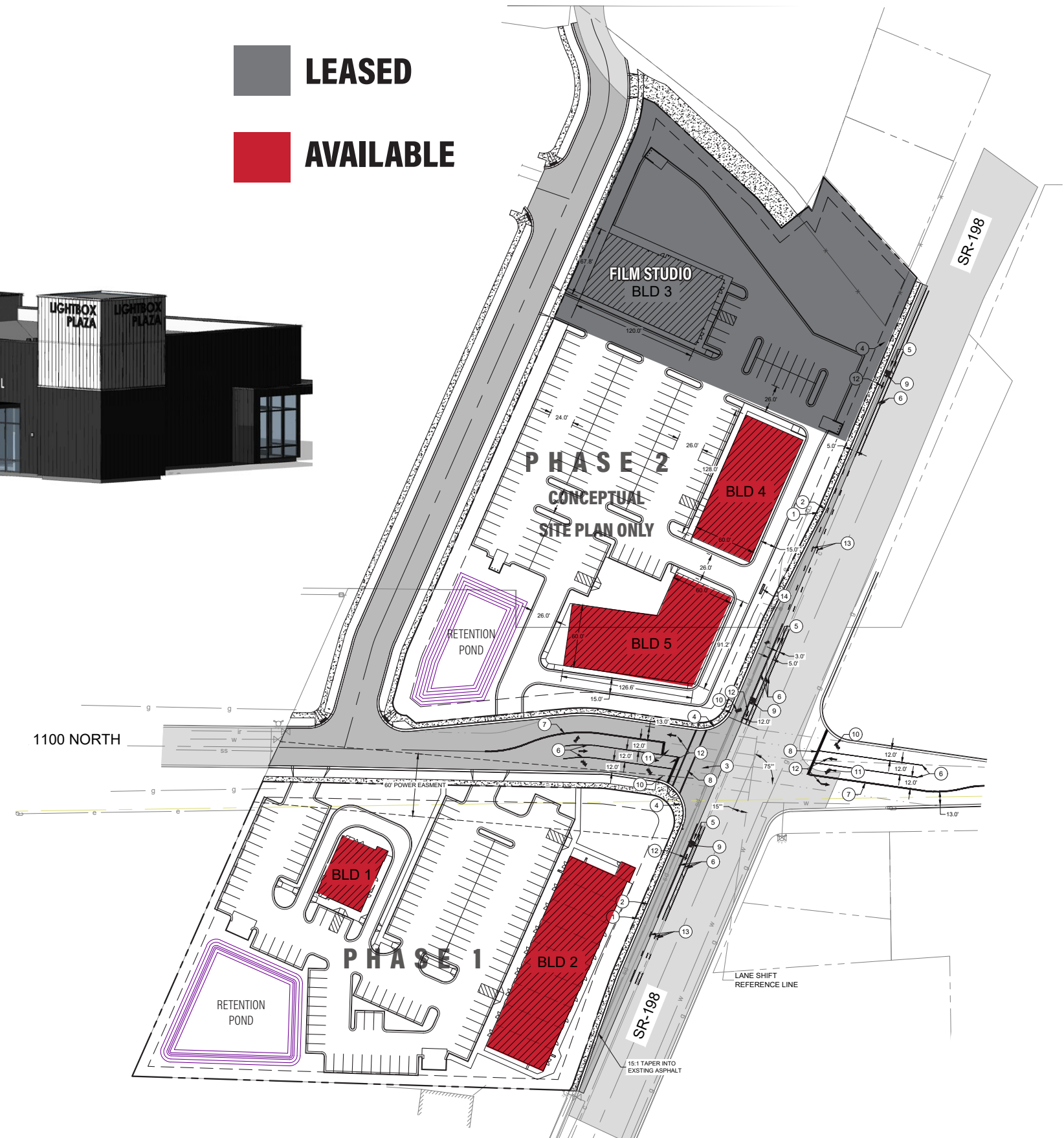
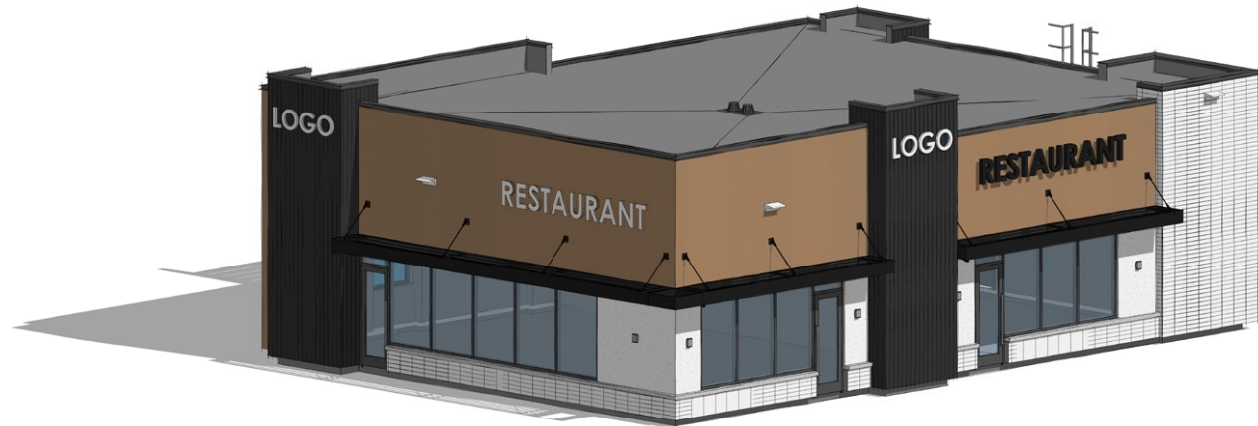
© Legend Commercial. All rights reserved. All information contained herein is from sources deemed reliable; however no representation or warranty is made to the accuracy thereof.

# LIGHTHOUSE PLAZA RETAIL DEVELOPMENT

1100 North SR-198 | Salem, UT 84653

LEASED

AVAILABLE



**CLICK HERE C-1 GENERAL COMMERCIAL ZONE  
USES AND REQUIREMENTS**

Contact

**CONNOR DEBRY**

m 801.557.9119  
cdebry@legendcommercial.com

**SKYLER PETERSON, SIOR**

Executive Vice President  
m 801.656.7354  
speterson@legendcommercial.com

**PARKER TAGGART**

Senior Associate  
m 801.928.1815  
ptaggart@legendcommercial.com



801.930.6750 | www.legendcommercial.com  
2180 S 1300 E, Suite 240 | Salt Lake City, UT 84106

Contact

**CONNOR DEBRY**

m 801.557.9119  
cdebry@legendcommercial.com

**SKYLER PETERSON, SIOR**

Executive Vice President  
m 801.656.7354  
speterson@legendcommercial.com

**PARKER TAGGART**

Senior Associate  
m 801.928.1815  
ptaggart@legendcommercial.com



801.930.6750 | www.legendcommercial.com  
2180 S 1300 E, Suite 240 | Salt Lake City, UT 84106