

Retail ★ LEASE

LanCarte.com

1540 SOUTHTOWN DR GRANBURY, TX 76048



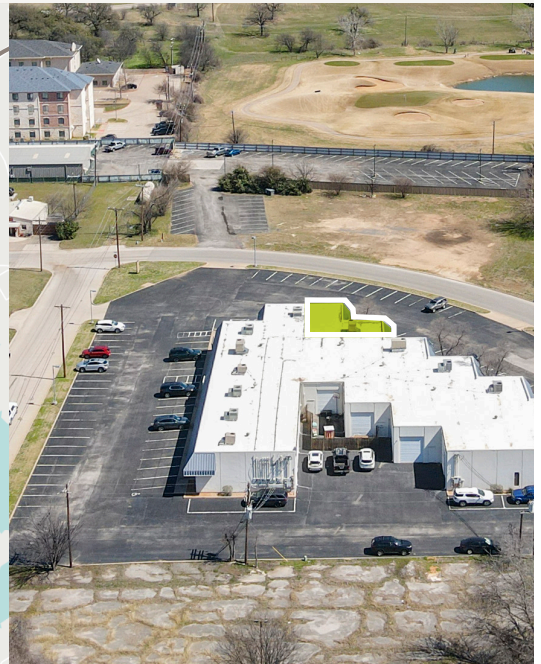
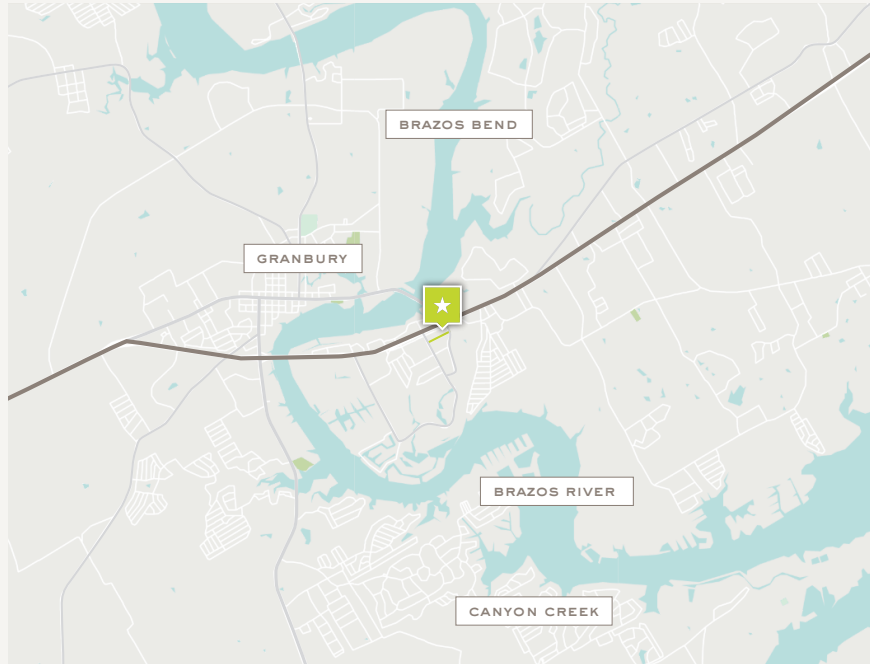
LANCARTE
COMMERCIAL

Laurie Carter
817-682-4143
lcarter@lancarte.com

Brittany Doyle CCIM
806-206-0290
bdoyle@lancarte.com

Retail ★ LEASE
1540 SOUTHTOWN DR

LanCarte.com



PROPERTY FEATURES

- Retail or Office Space
- 2,200 SF
- Spaces feature reception area, private office space, kitchenette and storage
- Plenty of shared parking

LOCATION OVERVIEW

Located just off Highway 377, this retail or office space offers excellent accessibility in the heart of Granbury's thriving commercial district. Positioned near major retailers, dining, and medical centers, the property is minutes from Historic Downtown Granbury and Lake Granbury. Its prime location provides convenient access to surrounding communities and the greater DFW metroplex.

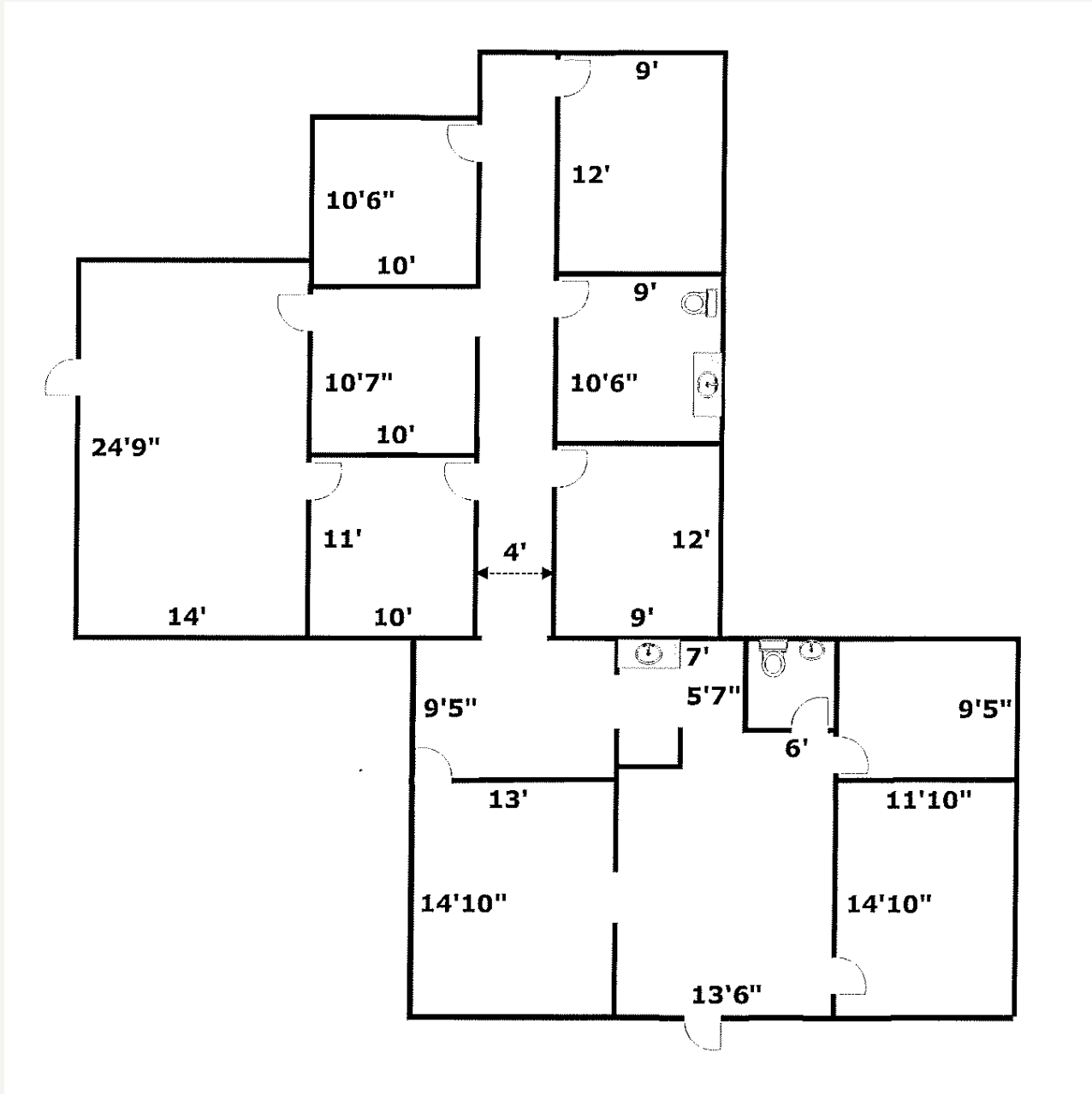
LEASING STRUCTURE

\$11 /SF NNN

Retail ★ LEASE
1540 SOUTHTOWN DR

LanCarte.com

FLOOR PLAN - UNITS 206/207



Retail ★ LEASE
1540 SOUTHTOWN DR

LanCarte.com

INTERIOR



Retail ★ LEASE
1540 SOUTHTOWN DR

LanCarte.com

EXTERIOR



Retail ★ LEASE
1540 SOUTHTOWN DR

LanCarte.com

EXTERIOR





LANCARTE
COMMERCIAL

Relentlessly Pursuing What Matters

Laurie Carter

817-682-4143 | lcarter@lancarte.com

Brittany Doyle CCIM

806-206-0290 | bdoyle@lancarte.com

The information provided herein was obtained from sources believed to be reliable. However, LanCarte Commercial makes no guaranties, warranties or representations as to the completeness or accuracy thereof. The presentation of this property is submitted subject to errors, omissions, change of price or conditions, prior to sale or lease, or withdrawal without notice. Copyright 2026 LanCarte Commercial Real Estate, LLC.