

Capri Plaza



FOR LEASE | 2,128 - 2,870 SF

15928 Ventura Boulevard | Encino, CA 91436

**RESTAURANT
& RETAIL SPACES**

YAIR HAIMOFF, SIOR

Executive Managing Director

☎ 818.203.5429

✉ yhaimoff@spectrumcre.com

DRE License #01414758

ANDREW GHASSEMI

Senior Vice President

☎ 661.212.3956

✉ aghassemi@spectrumcre.com

DRE License #01963548

MATT SREDEN

Vice President

☎ 661.755.6654

✉ msreden@spectrumcre.com

DRE License #01907628

SPECTRUM
COMMERCIAL REAL ESTATE, INC.

No warranty, express or implied, is made as to the accuracy of the information contained herein. This information is submitted subject to errors, omissions, change of price, rental or other conditions, withdrawal without notice, and is subject to any special listing conditions imposed by our principals. Cooperating brokers, buyers, tenants and other parties who receive this document should not rely on it, but should use it as a starting point of analysis, and should independently confirm the accuracy of the information contained herein through a due diligence review of the books, records, files and documents that constitute reliable sources of the information described herein. Spectrum Commercial Real Estate, Inc., CA DRE #02042805

FOR LEASE | 2,128 - 2,870 SF | RESTAURANT / RETAIL



15928 Ventura Boulevard | Encino, CA 91436

AVAILABLE UNITS

UNIT	SIZE (RSF)	COMMENTS
113-114	2,128	Restaurant Space
110-112	2,870	Retail Space

PROPERTY FEATURES

- Mixed-use Office/Retail Property in the Heart of Encino with a Brilliant Outside Courtyard Area
- Tremendous Amount of Daily Foot Traffic
- Excellent Subterranean 3/1,000 Parking with Valet Service
- Parking Fee: \$90.00 Unreserved & \$125.00 Reserved Space per Month

LOCATION HIGHLIGHTS

- Capri Plaza is Situated in the Heart of the Commercial and High-Income Residential District Along Ventura Blvd. in Encino
- Walking Distance to Local Amenities, Restaurants and Shops
- Minutes to and from the 405 and 101 Freeways



YAIR HAIMOFF, SIOR
Executive Managing Director
📞 818.203.5429
✉️ yhaimoff@spectrumcre.com
DRE License #01414758

ANDREW GHASSEMI
Senior Vice President
📞 661.212.3956
✉️ aghassemi@spectrumcre.com
DRE License #01963548

MATT SREDEN
Vice President
📞 661.755.6654
✉️ msreden@spectrumcre.com
DRE License #01907628

SPECTRUM
COMMERCIAL REAL ESTATE, INC.

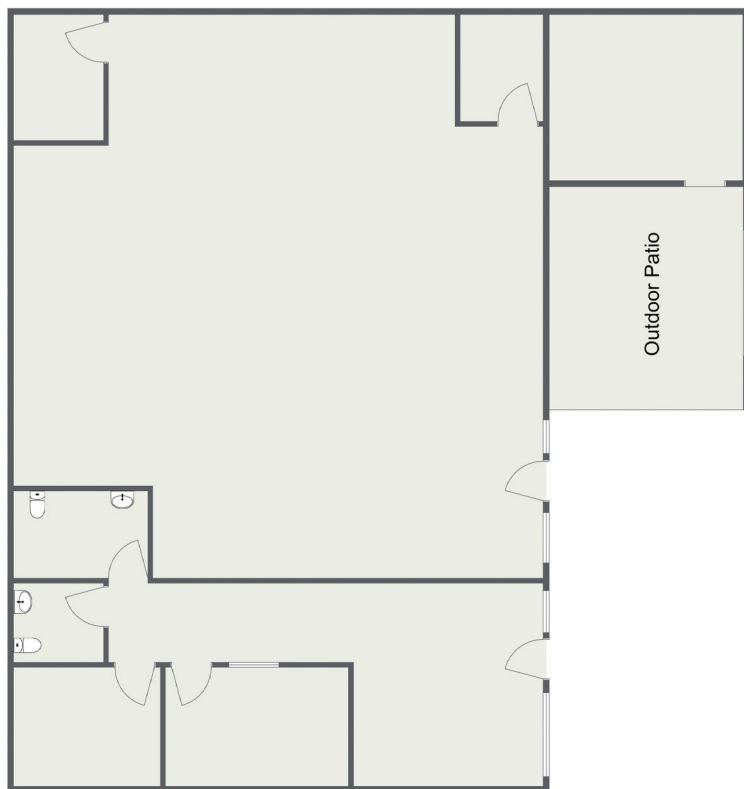
No warranty, express or implied, is made as to the accuracy of the information contained herein. This information is submitted subject to errors, omissions, change of price, rental or other conditions, withdrawal without notice, and is subject to any special listing conditions imposed by our principals. Cooperating brokers, buyers, tenants and other parties who receive this document should not rely on it, but should use it as a starting point of analysis, and should independently confirm the accuracy of the information contained herein through a due diligence review of the books, records, files and documents that constitute reliable sources of the information described herein. Spectrum Commercial Real Estate, Inc., CA DRE #02042805

FOR LEASE | 2,128 - 2,870 SF | RESTAURANT / RETAIL

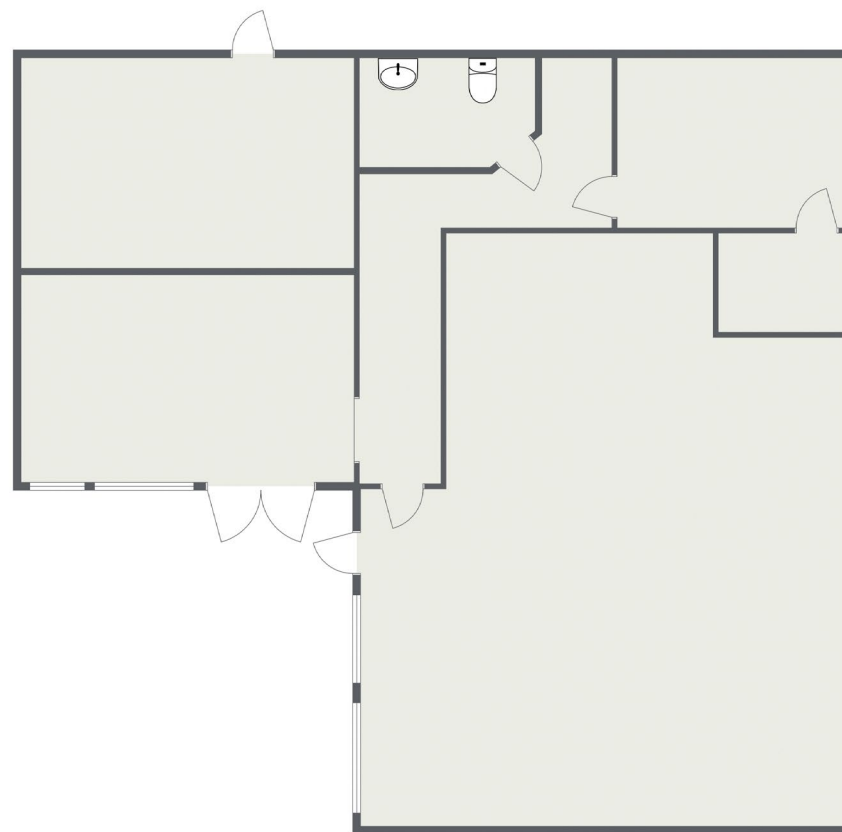


15928 Ventura Boulevard | Encino, CA 91436

FLOOR PLANS



Unit 110-112 2,870 SF Retail Space



Unit 113-114 2,128 SF Restaurant Space

YAIR HAIMOFF, SIOR
Executive Managing Director
📞 818.203.5429
✉ yhaimoff@spectrumcre.com
DRE License #01414758

ANDREW GHASSEMI
Senior Vice President
📞 661.212.3956
✉ aghassemi@spectrumcre.com
DRE License #01963548

MATT SREDEN
Vice President
📞 661.755.6654
✉ msreden@spectrumcre.com
DRE License #01907628

SPECTRUM
COMMERCIAL REAL ESTATE, INC.

No warranty, express or implied, is made as to the accuracy of the information contained herein. This information is submitted subject to errors, omissions, change of price, rental or other conditions, withdrawal without notice, and is subject to any special listing conditions imposed by our principals. Cooperating brokers, buyers, tenants and other parties who receive this document should not rely on it, but should use it as a starting point of analysis, and should independently confirm the accuracy of the information contained herein through a due diligence review of the books, records, files and documents that constitute reliable sources of the information described herein. Spectrum Commercial Real Estate, Inc., CA DRE #02042805

FOR LEASE | 2,128 - 2,870 SF | RESTAURANT / RETAIL



15928 Ventura Boulevard | Encino, CA 91436



YAIR HAIMOFF, SIOR
 Executive Managing Director
 ☎ 818.203.5429
 ✉ yhaimoff@spectrumcre.com
 DRE License #01414758

ANDREW GHASSEMI
 Senior Vice President
 ☎ 661.212.3956
 ✉ aghassemis@spectrumcre.com
 DRE License #01963548

MATT SREDEN
 Vice President
 ☎ 661.755.6654
 ✉ msreden@spectrumcre.com
 DRE License #01907628

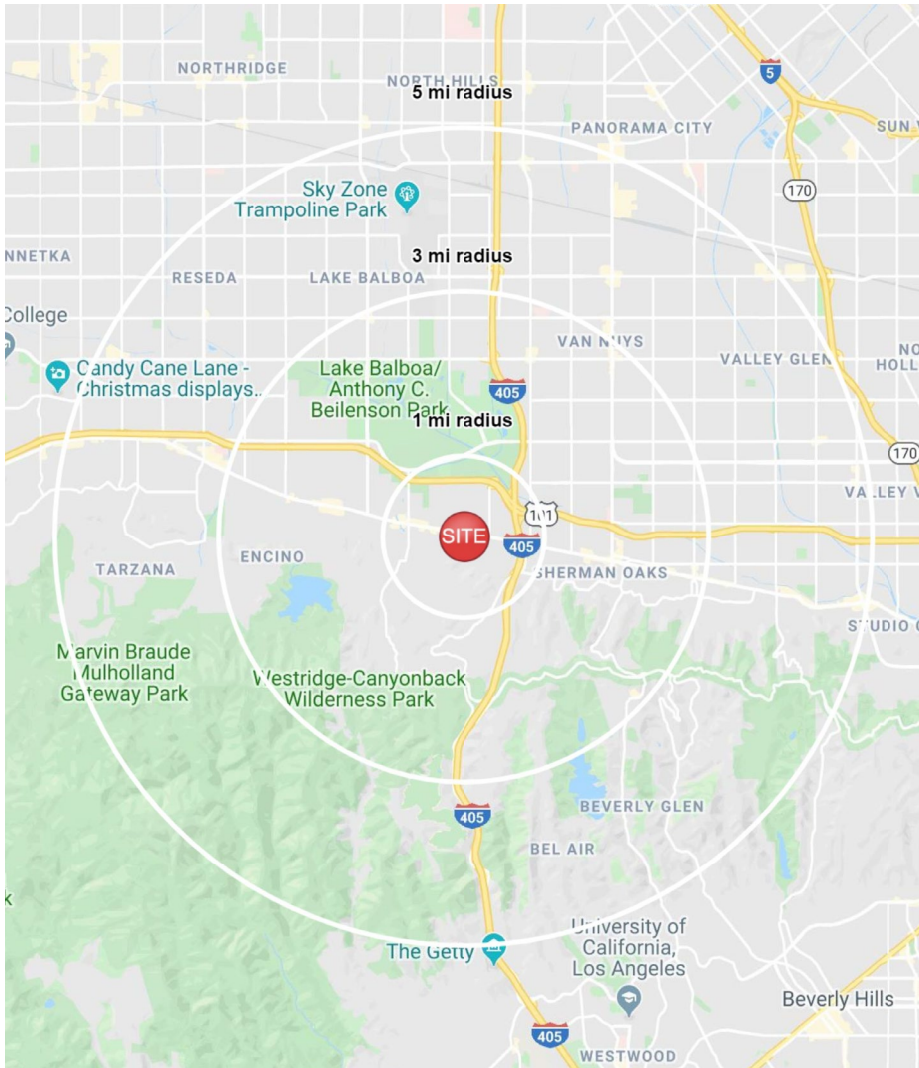


No warranty, express or implied, is made as to the accuracy of the information contained herein. This information is submitted subject to errors, omissions, change of price, rental or other conditions, withdrawal without notice, and is subject to any special listing conditions imposed by our principals. Cooperating brokers, buyers, tenants and other parties who receive this document should not rely on it, but should use it as a starting point of analysis, and should independently confirm the accuracy of the information contained herein through a due diligence review of the books, records, files and documents that constitute reliable sources of the information described herein. Spectrum Commercial Real Estate, Inc., CA DRE #02042805

FOR LEASE | 2,128 - 2,870 SF | RESTAURANT / RETAIL



15928 Ventura Boulevard | Encino, CA 91436



POPULATION	1 MILE	3 MILES	5 MILES
Estimated Population (2019)	20,000	167,288	485,995
Median Age	39.5	38.3	37.6



HOUSEHOLD INCOME	1 MILE	3 MILES	5 MILES
Estimated Avg HH Income (2019)	\$145,475	\$129,464	\$111,817
Projected Avg HH Income (2024)	\$177,115	\$157,906	\$135,455
Estimated Households	9,917	70,289	187,625



DAYTIME DEMOGRAPHICS	1 MILE	3 MILES	5 MILES
Total Businesses	4,338	15,585	31,818
Daytime Population	23,710	90,583	203,179

YAIR HAIMOFF, SIOR
Executive Managing Director
📞 818.203.5429
✉️ yhaimoff@spectrumcre.com
DRE License #01414758

ANDREW GHASSEMI
Senior Vice President
📞 661.212.3956
✉️ aghassemi@spectrumcre.com
DRE License #01963548

MATT SREDEN
Vice President
📞 661.755.6654
✉️ msreden@spectrumcre.com
DRE License #01907628



No warranty, express or implied, is made as to the accuracy of the information contained herein. This information is submitted subject to errors, omissions, change of price, rental or other conditions, withdrawal without notice, and is subject to any special listing conditions imposed by our principals. Cooperating brokers, buyers, tenants and other parties who receive this document should not rely on it, but should use it as a starting point of analysis, and should independently confirm the accuracy of the information contained herein through a due diligence review of the books, records, files and documents that constitute reliable sources of the information described herein. Spectrum Commercial Real Estate, Inc., CA DRE #02042805