

ELIZABETHTON LAND

1001 West Elk Avenue
Elizabethton, TN 37643

Location

Between Walmart and Sycamore Shoals Hospital in Elizabethton

Available for Sale

4.4 acres
\$425,000

Highlights

Great location for office or industrial

Level topography

Easily accessible via traffic light at the intersection of W Elk Ave and Over Mountain Dr

Existing curb cut and gravel driveway

Minutes from shopping, restaurants, Sycamore Shoals Hospital and Sycamore Shoals State Historic Park

Traffic Counts

W Elk Ave: 32,608 (2022)

Demographics

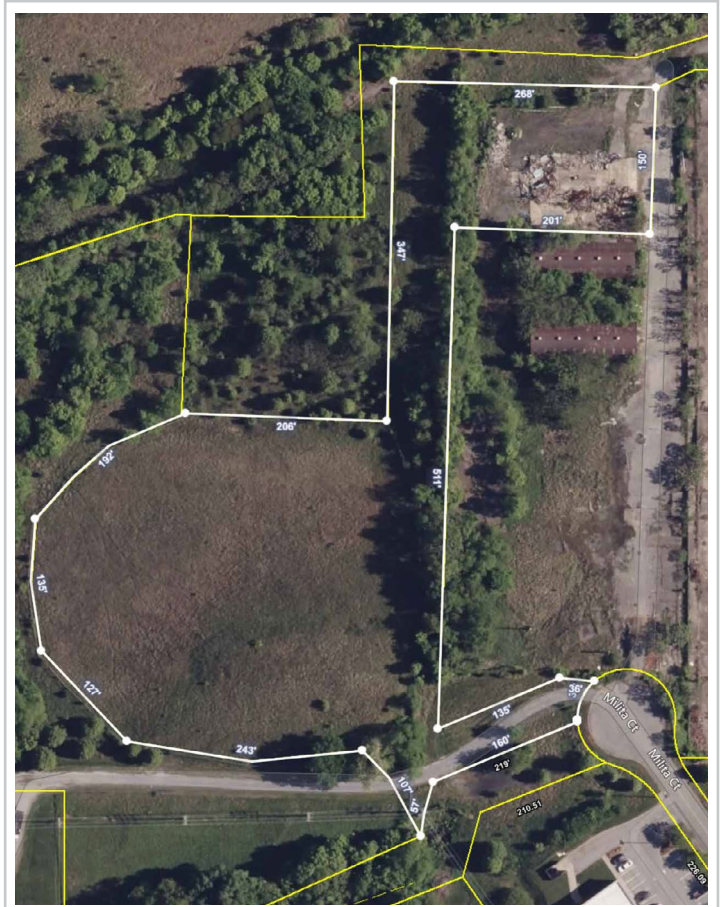
(2024 Est.)	3 mile	5 mile	10 mile
Population	19,416	37,785	135,438
Median HH Income	\$51,630	\$51,599	\$56,261
Median Age	44.7	43.7	41.1

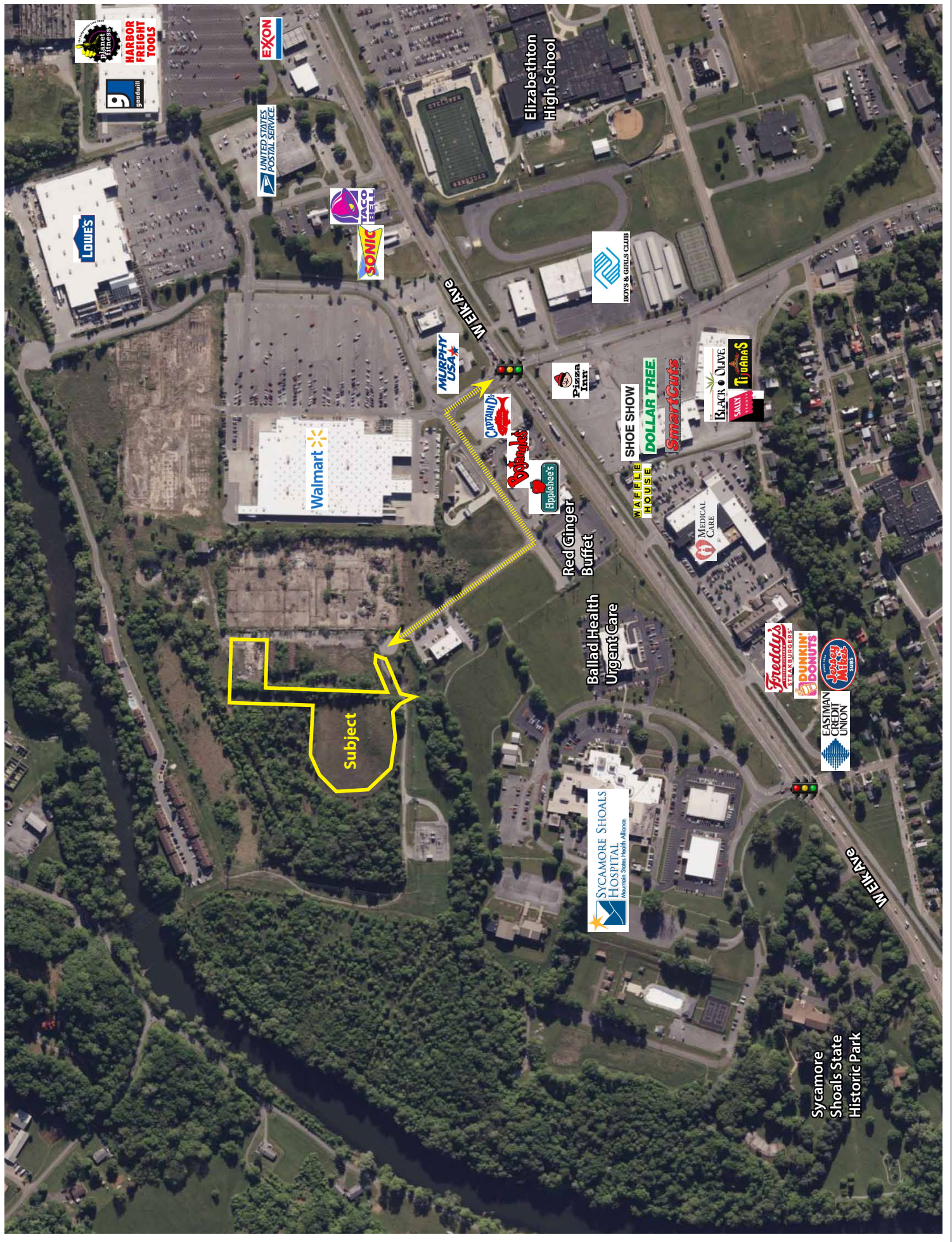
Contact

John Speropulos, CCIM, SIOR
john@mitchcox.com

Marc Murphy, CCIM
mmurphy@mitchcox.com

📞 423-282-6582 | 📠 423-282-5903
www.mitchcox.com





planet fitness
HARBOR FREIGHT TOOLS
Goodwill

EXXON
UNITED STATES POSTAL SERVICE

LOWE'S

SONIC
TACO BELL

MURPHY USA

Walmart

CAPTAIN D'S

Bobbie's

Applebee's

Red Ginger Buffet

Ballad Health Urgent Care

SYCAMORE SHOALS HOSPITAL
Accion Status Health Alliance

Sycamore Shoals State Historic Park

Elizabethton High School

BOYS & GIRLS CLUB

SHOE SHOW
DOLLAR TREE
SmartCuts

BLACK OLIVE
SALSA
TIJUANA'S

Waffle House

MEDICAL CARE

Freddy's STEAKBURGERS
DUNKIN' DONUTS

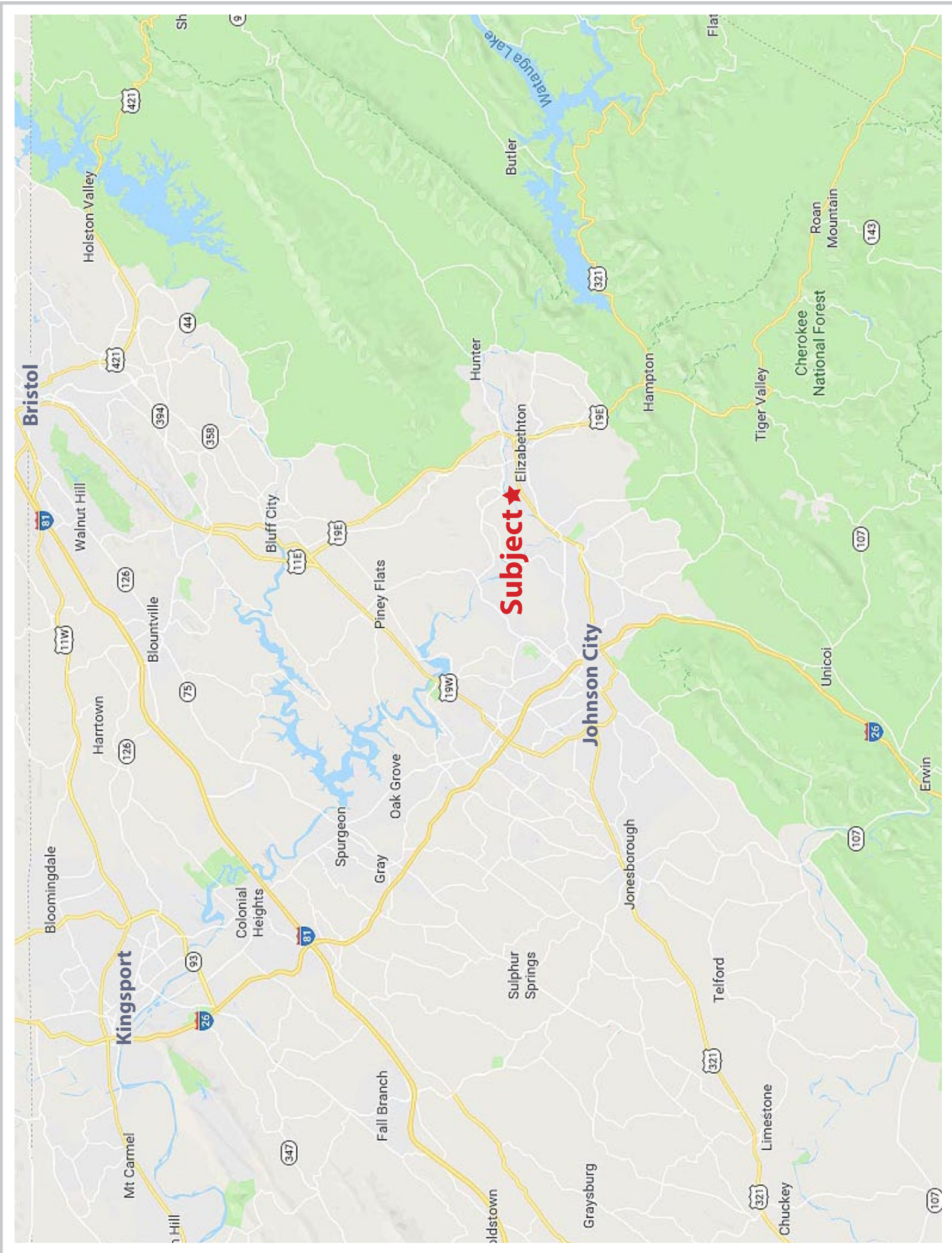
Jersey Mike's

EASTMAN CREDIT UNION

Pizzeria Lenny's

WEIKAVE

WEIKAVE

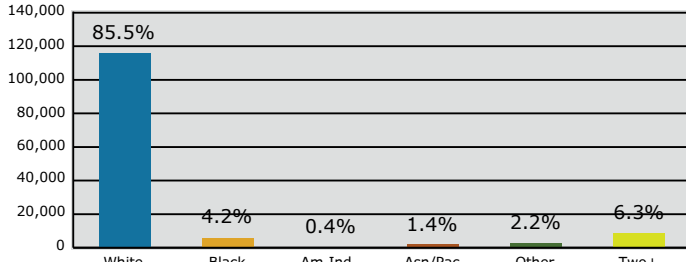




Graphic Profile

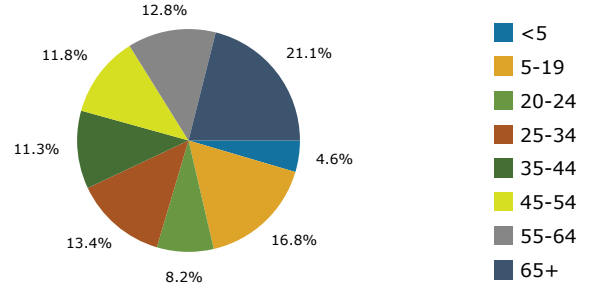
1001 W Elk Ave, Elizabethton, TN
10 mile radius

2024 Population by Race

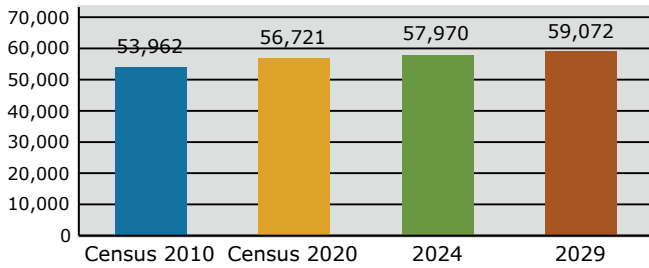


2024 Percent Hispanic Origin: 5.0%

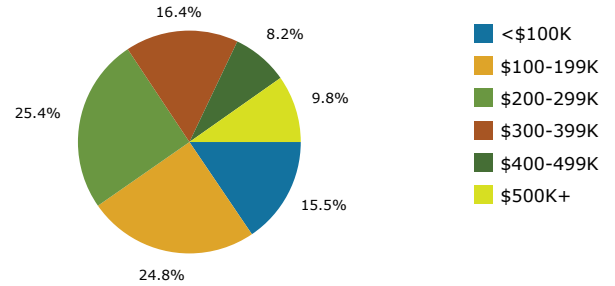
2024 Population by Age



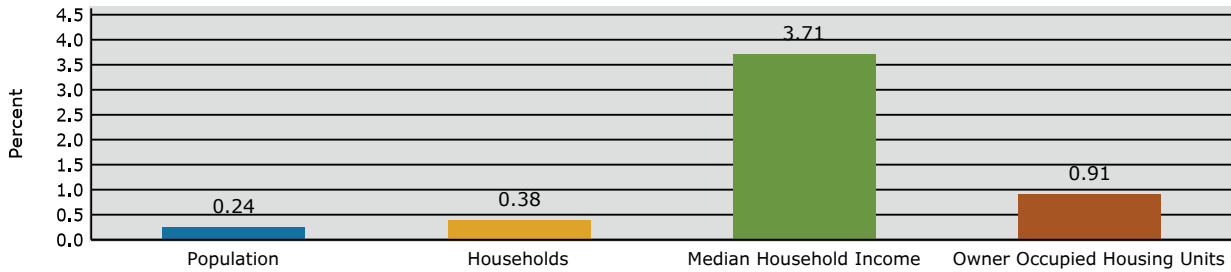
Households



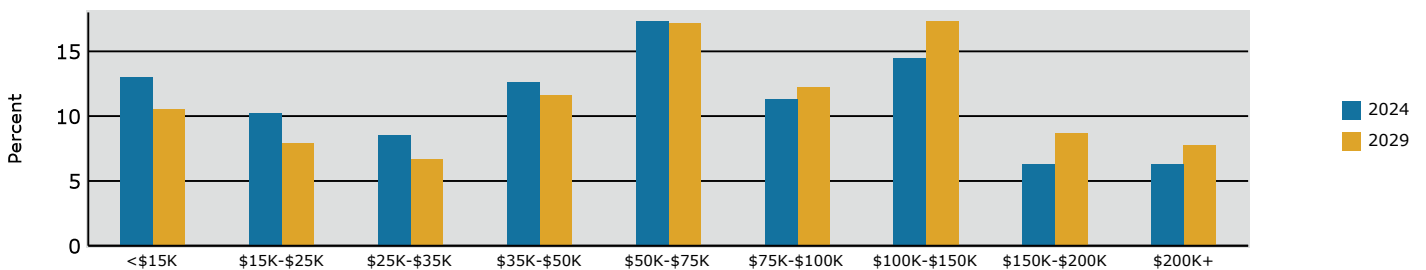
2024 Home Value



2024-2029 Annual Growth Rate



Household Income



MITCH COX
REALTOR, INC.

2304 Silverdale Drive, Suite 200, Johnson City, TN 37601
423-282-6582 (o) 423-282-5903 (f) www.mitchcox.com