



419 W Murray Ave | Visalia, CA

Property For Lease

1005 N Demaree Street  
Visalia, California 93291  
O | 559.754.3020  
F | 559.429.4016  
[www.mdgre.com](http://www.mdgre.com)

**GRAHAM** | **& ASSOCIATES**

Matt Graham  
Lic# 01804235  
[www.mdgre.com](http://www.mdgre.com)

to learn more, visit: [www.mdgre.com](http://www.mdgre.com)



419 W Murray Ave | Visalia, CA

GRAHAM | & ASSOCIATES

Property For Lease

## PROPERTY DETAILS

**Address:** 419 W Murray Ave | Visalia, CA

**APN:** 094-341-008

**Building Size:** 6,500 +/- Sq. Ft. \* Demisable \*

**Zoning** PA

**Lease Rate:** \$1.75 Per Sq. Ft.



### Additional Comments:

Great opportunity to lease a turnkey professional/medical office in downtown Visalia. The space is available as a full building or available as two separate spaces - 1st floor and 2nd floor. Located on the corner of West Street and Murray Ave - it is just blocks away from downtown Visalia and amenities such as, banking, restaurants, shopping and more. There is a private parking lot included on the lot. It has been very well maintained and recently renovated. Please call for further details.



**Contact Broker:**

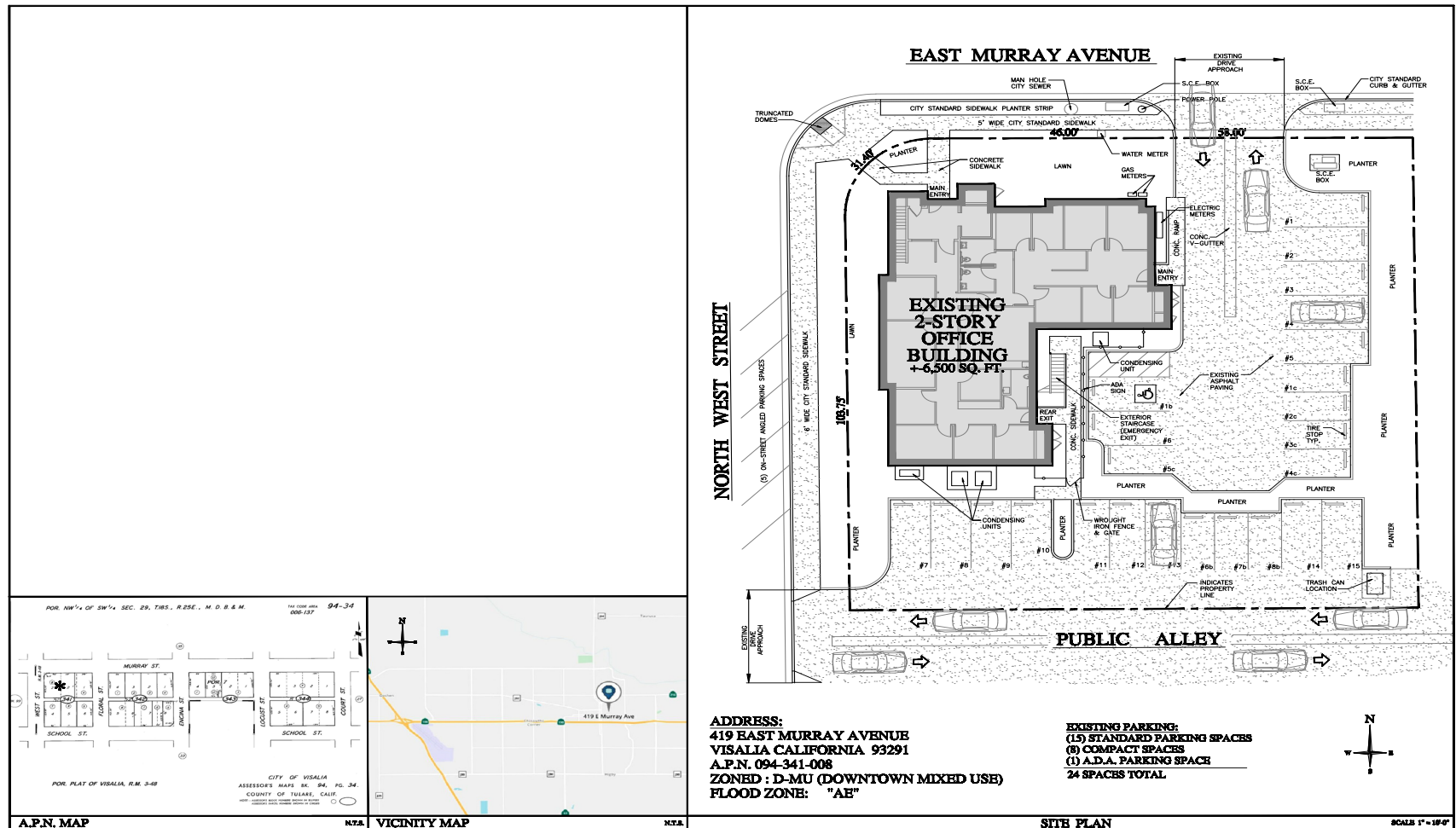
Matt Graham  
Lic# 01804235

**to learn more, visit: [www.mdgre.com](http://www.mdgre.com)**

1005 N Demaree Street  
Visalia, California 93291  
O | 559.754.3020

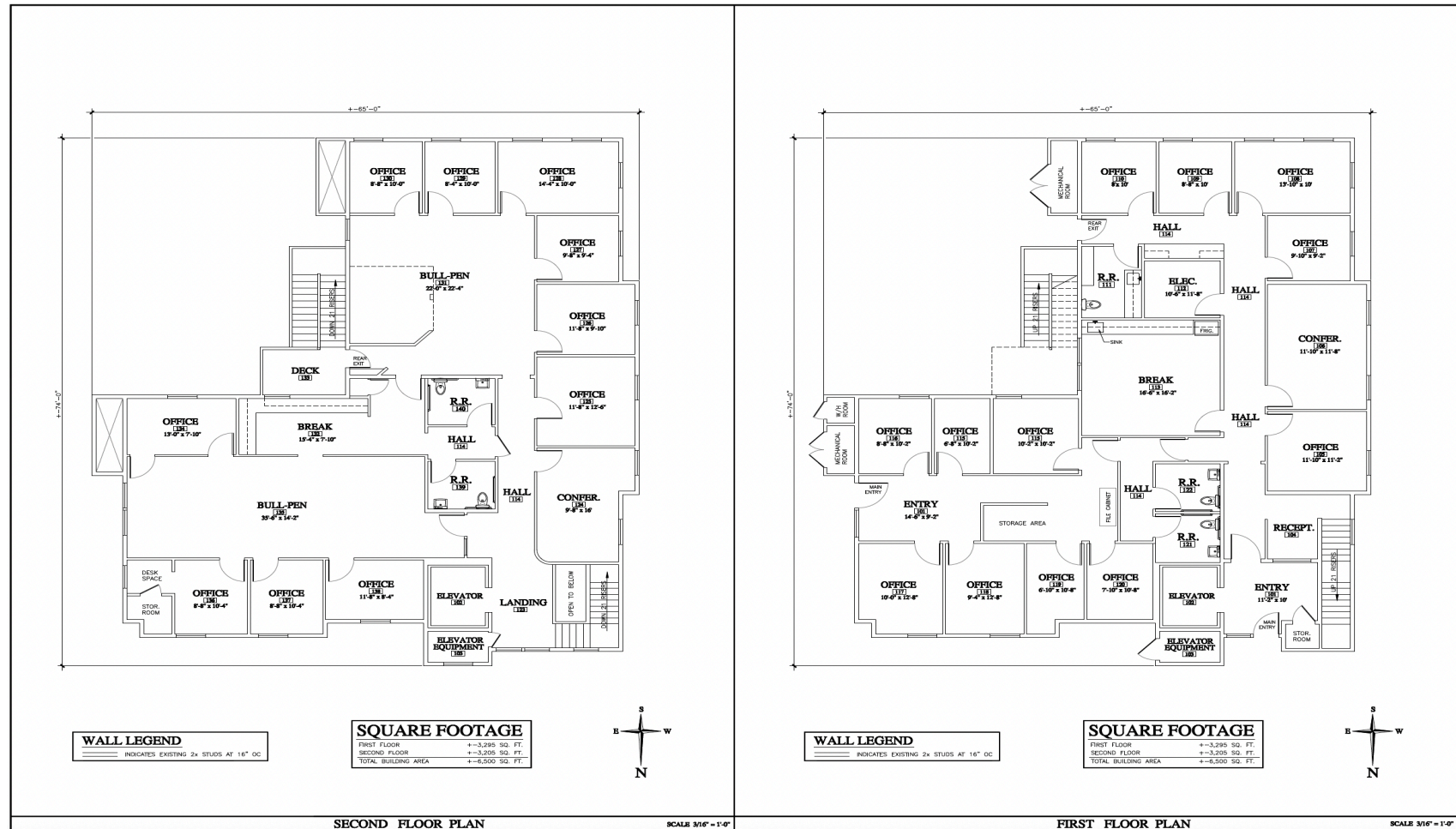
PLEASE NOTE: ALL INFORMATION AND REPRESENTATION MADE HEREIN, WHILE NOT GUARANTEED, HAVE BEEN SECURED FROM SOURCES WE BELIEVE TO BE RELIABLE, HOWEVER, THEY ARE NOT WARRANTED BY MATT GRAHAM & ASSOCIATES AND ARE SUBJECT TO CHANGE WITHOUT NOTICE.

## PROPERTY LAYOUT



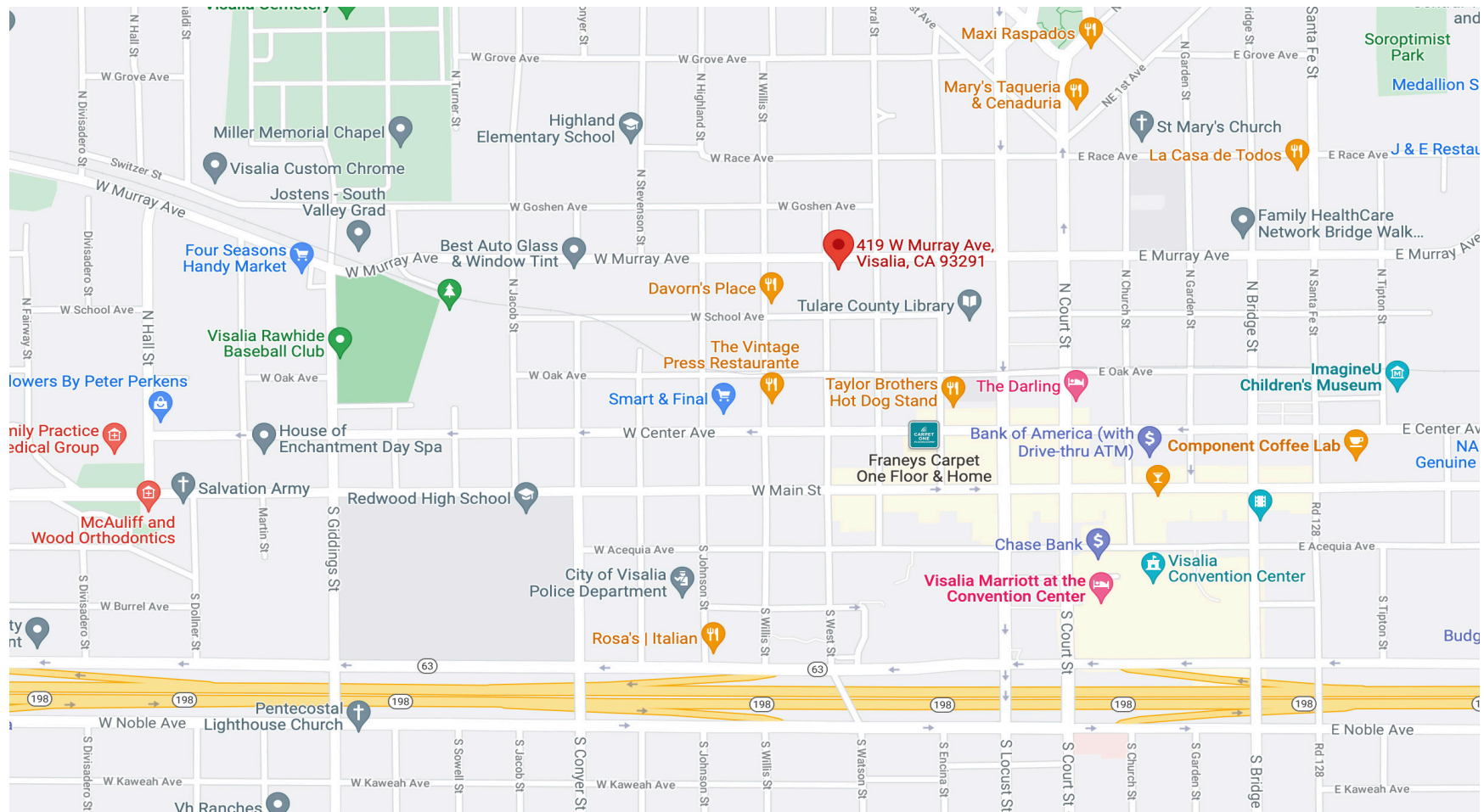
PLEASE NOTE: ALL INFORMATION AND REPRESENTATION MADE HEREIN, WHILE NOT GUARANTEED, HAVE BEEN SECURED FROM SOURCES WE BELIEVE TO BE RELIABLE, HOWEVER, THEY ARE NOT WARRANTED BY MATT GRAHAM & ASSOCIATES AND ARE SUBJECT TO CHANGE WITHOUT NOTICE.

## FLOOR PLAN - 1ST &amp; 2ND FLOORS



PLEASE NOTE: ALL INFORMATION AND REPRESENTATION MADE HEREIN, WHILE NOT GUARANTEED, HAVE BEEN SECURED FROM SOURCES WE BELIEVE TO BE RELIABLE, HOWEVER, THEY ARE NOT WARRANTED BY MATT GRAHAM & ASSOCIATES AND ARE SUBJECT TO CHANGE WITHOUT NOTICE.

## LOCATION MAP



PLEASE NOTE: ALL INFORMATION AND REPRESENTATION MADE HEREIN, WHILE NOT GUARANTEED, HAVE BEEN SECURED FROM SOURCES WE BELIEVE TO BE RELIABLE, HOWEVER, THEY ARE NOT WARRANTED BY MATT GRAHAM & ASSOCIATES AND ARE SUBJECT TO CHANGE WITHOUT NOTICE.



419 W Murray Ave | Visalia, CA

GRAHAM & ASSOCIATES

Property For Lease

## PROPERTY LAYOUT



PLEASE NOTE: ALL INFORMATION AND REPRESENTATION MADE HEREIN, WHILE NOT GUARANTEED, HAVE BEEN SECURED FROM SOURCES WE BELIEVE TO BE RELIABLE, HOWEVER, THEY ARE NOT WARRANTED BY MATT GRAHAM & ASSOCIATES AND ARE SUBJECT TO CHANGE WITHOUT NOTICE.



419 W Murray Ave | Visalia, CA

GRAHAM & ASSOCIATES

Property For Lease

## PROPERTY PHOTOS



PLEASE NOTE: ALL INFORMATION AND REPRESENTATION MADE HEREIN, WHILE NOT GUARANTEED, HAVE BEEN SECURED FROM SOURCES WE BELIEVE TO BE RELIABLE, HOWEVER, THEY ARE NOT WARRANTED BY MATT GRAHAM & ASSOCIATES AND ARE SUBJECT TO CHANGE WITHOUT NOTICE.