

# FOR LEASE OR SALE

1035 NW 112TH ST, OKLAHOMA CITY, OKLAHOMA, 73114



**N Western Ave**

**NW 112th Street**

**Coming Soon**

**Sold**

**HORIZON**  
COMMERCIAL REAL ESTATE

**Nicole Mayes**  
Senior Vice President  
405.209.3992  
[www.horizoncreok.com](http://www.horizoncreok.com)

**Spencer Bost**  
Associate  
405.628.7481

**Walmart**

*Cabela's*

**TOPGOLF**

**COSTCO**

**Western**

**Subject Site**

**HORIZON**  
COMMERCIAL REAL ESTATE

**Nicole Mayes**  
Senior Vice President  
405.209.3992  
www.horizoncreok.com

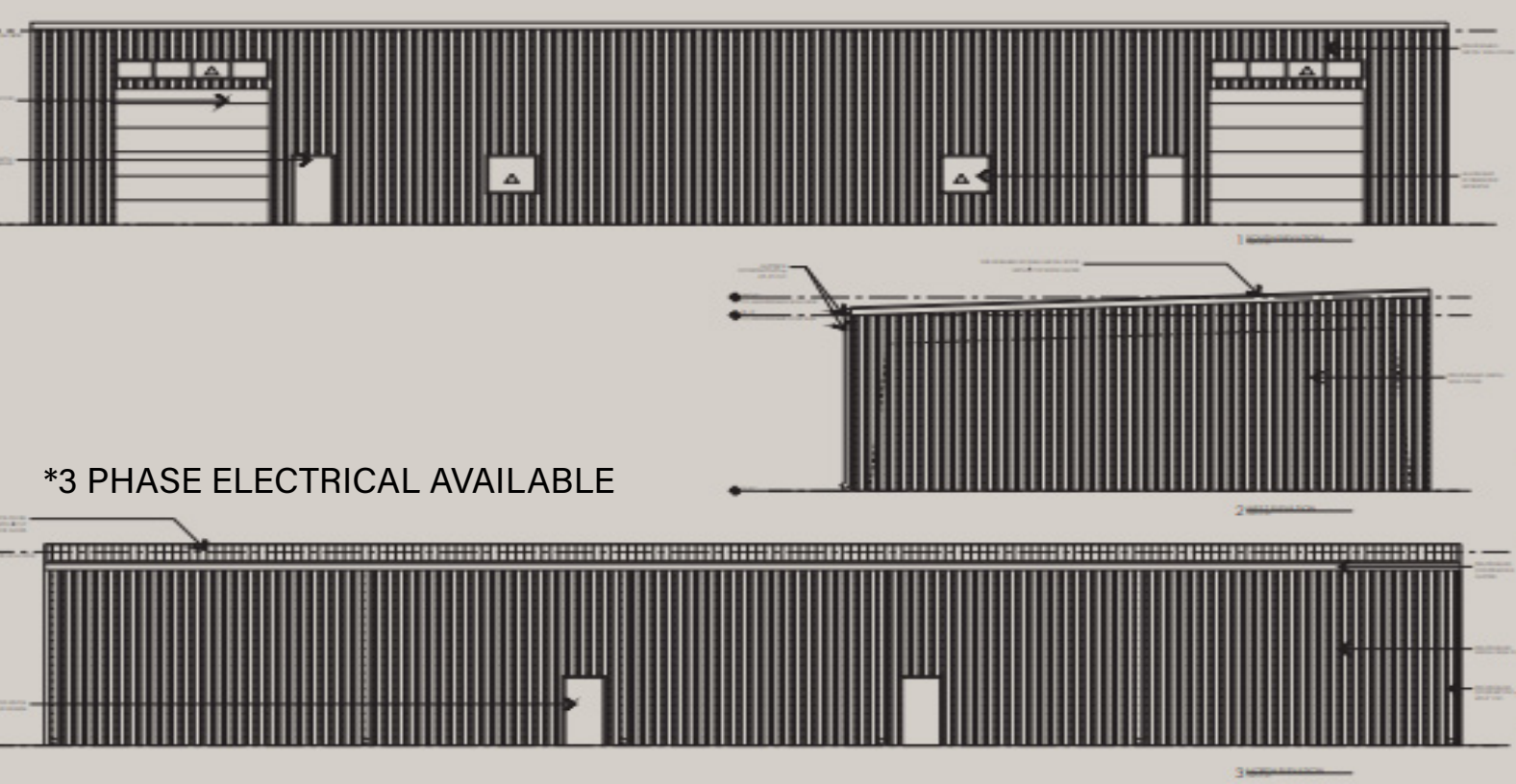
**Spencer Bost**  
Associate  
405.628.7481

# PROPERTY INFORMATION



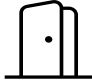

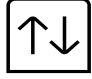


**FOR LEASE: \$12.00/SF NNN**

**FOR SALE: \$165/SF**

<b>CONSTRUCTION</b>	METAL
<b>OVERHEAD DOOR</b>	14' x 12'
<b>CLEAR HEIGHT</b>	18' - 21'
<b>ZONING</b>	LIGHT INDUSTRIAL



Building Number	Building Square Feet
Building One	4,500 sf
Building Two (SOLD)	4,500 sf
Building Three	5,000 sf
Building Four	4,000 sf
Building Five	4,000 sf
Building Six	7,000 sf
Building Seven	4,500 sf
Building Eight	4,500 sf
Building Nine	4,500 sf
Building Ten (COMING SOON)	4,500 sf

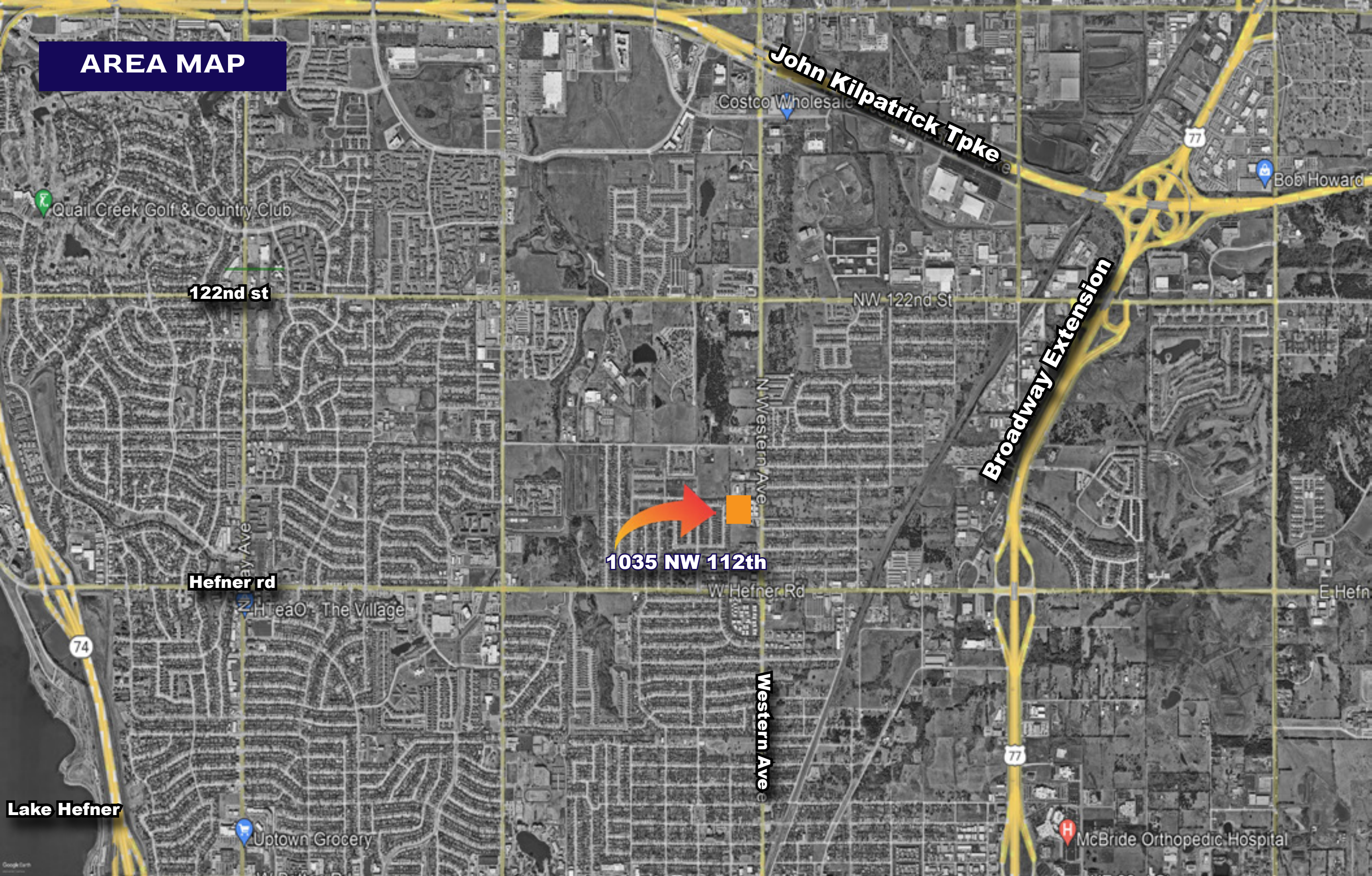
-  BRAND NEW, MODERN, CUSTOMIZABLE LIGHT INDUSTRIAL SPACES
-  FIRST SPEC BUILDING IS EXPECTED TO BE READY IN MAY 2024!
-  EACH BUILDING INCLUDES OVERHEAD DOOR, STOREFRONT, & SPRAY FOAM INSULATION.
-  THE STANDARD OFFICE SPACE CAN BE CHANGED & CUSTOMIZED TO FIT YOUR NEEDS
-  LEASE-THEN-PURCHASE AGREEMENTS AVAILABLE WITH NEGOTIABLE REBATES
-  EXTREMELY FLEXIBLE SPACES PERFECT FOR YOUR STORAGE, OFFICE, OR WAREHOUSE NEEDS
-  LOCATED BETWEEN BROADWAY EXT & KILPATRICK TPKE - JUST SOUTH OF CHISHOLM CREEK.

ALTHOUGH THE INFORMATION HAS BEEN OBTAINED FROM TRUSTWORTHY SOURCES, HORIZON CRE MAKES NO GUARANTEES, ASSURANCES, OR WARRANTIES ABOUT THE COMPLETENESS OR ACCURACY OF THE DATA. THIS PROPERTY IS BEING PRESENTED WITH THE POSSIBILITY OF ERRORS AND OMISSIONS. MODIFICATIONS MAY OCCUR THAT ALTER THE FACTS OF THIS PRESENTATION WITHOUT NOTICE.



**Nicole Mayes** | **Spencer Bost**  
Senior Vice President | Associate  
405.209.3992 | 405.628.7481  
[www.horizoncreok.com](http://www.horizoncreok.com)

# AREA MAP



**HORIZON**  
COMMERCIAL REAL ESTATE

**Nicole Mayes**  
Senior Vice President  
405.209.3992

**Spencer Bost**  
Associate  
405.628.7481

[www.horizoncreok.com](http://www.horizoncreok.com)





**HORIZON**  
COMMERCIAL REAL ESTATE

**Nicole Mayes**  
Senior Vice President  
405.209.3992  
[www.horizoncreok.com](http://www.horizoncreok.com)

**Spencer Bost**  
Associate  
405.628.7481

Nicole Mayes  
Senior Vice President  
405.209.3992  
nicole.mayes@horizoncreek.com

Spencer Bost  
Associate  
405.628.7481  
spencer.bost@horizoncreek.com

301 Lilac Drive  
Suite 200  
Edmond, OK 73034  
horizoncreek.com

---



**HORIZON**  
COMMERCIAL REAL ESTATE

---

The logo for Horizon Commercial Real Estate features the word "HORIZON" in a bold, dark blue, sans-serif font. The letter "O" is replaced by a stylized orange and yellow sun or sphere. Below "HORIZON" is a thin horizontal line, and underneath that, the words "COMMERCIAL REAL ESTATE" are written in a smaller, dark blue, sans-serif font. The entire logo is enclosed in a thin dark blue rectangular border.