



15591 Container Lane

HUNTINGTON BEACH, CA 92649

—
PRESENTED BY ASHLEY MARIE

Property Summary

Welcome to 15591 Container Lane—an exceptional opportunity to own a freestanding industrial building in one of Orange County's most sought-after coastal cities. Tucked within a well-maintained business park just minutes from the water, this flexible property is ideal for owner-users, investors, or developers seeking a strategic, lifestyle-enhanced location.

Currently configured as two separate warehouse spaces, the building offers versatile use potential—occupy one side and lease the other, or combine the spaces into a single-user layout. With

soaring 18-foot ceilings, 400 AMPs of 208V 3-phase power, and two 12' roll-up doors, the property is well-equipped for a variety of industrial uses, while also lending itself to creative office, showroom, or lifestyle brand conversion.

Delivered vacant and sold as-is, this is a rare coastal industrial asset with immediate functionality and future upside.



Property Highlights

Offered at \$4,907,700 | \$410 per SF

Year of Construction: 1975

Parking Ratio 1.42/1,000 SF (17 spaces total; 13 secured behind gate)

Building Size ±11,970 SF (Front ±6,765 SF, Back ±5,205 SF)

Site Area ±23,958 SF | 0.55 Acres

Gated Yard

Lot recently upgraded with new concrete paving

Property frontage refreshed, ready for new landscaping

Delivered vacant at close and sold as-is, ready for immediate occupancy or redevelopment

Ceiling height: 18 FT

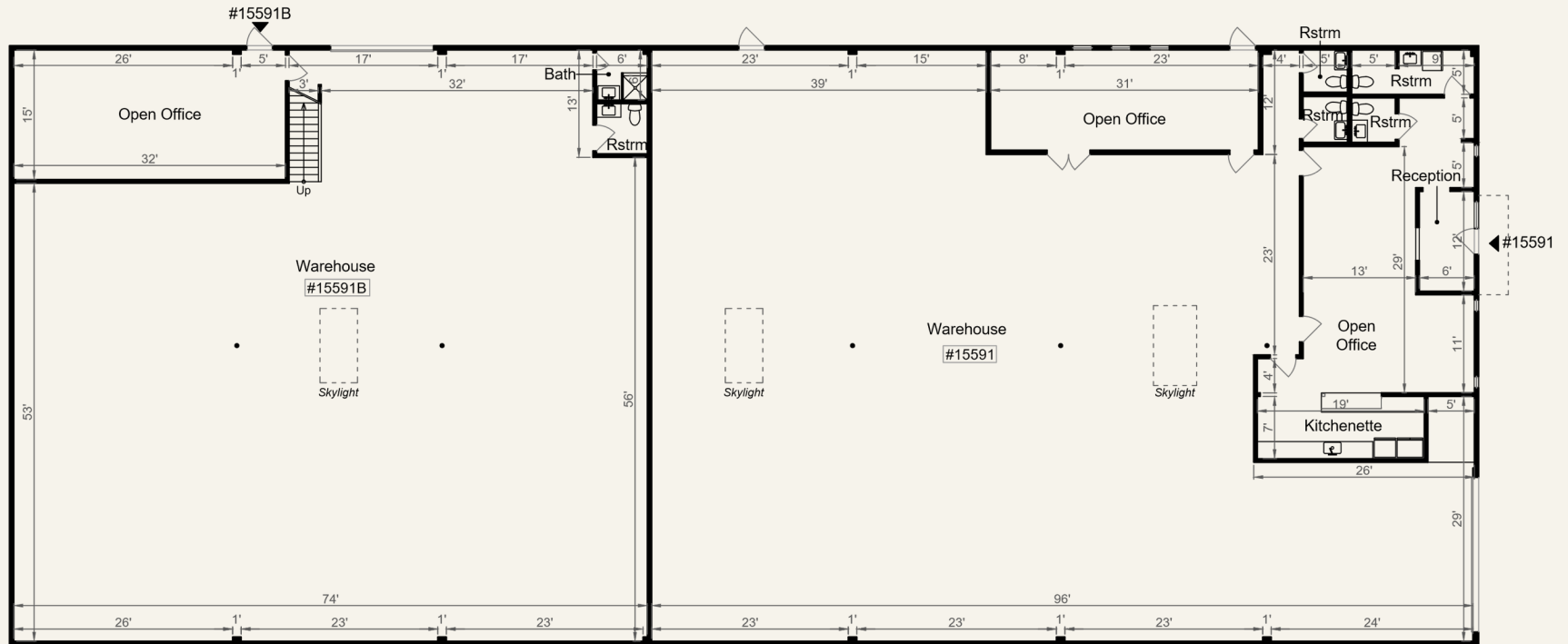
2 roll up doors, 12 FT tall

Power: 400 AMPs | 208V 3-Phase Power

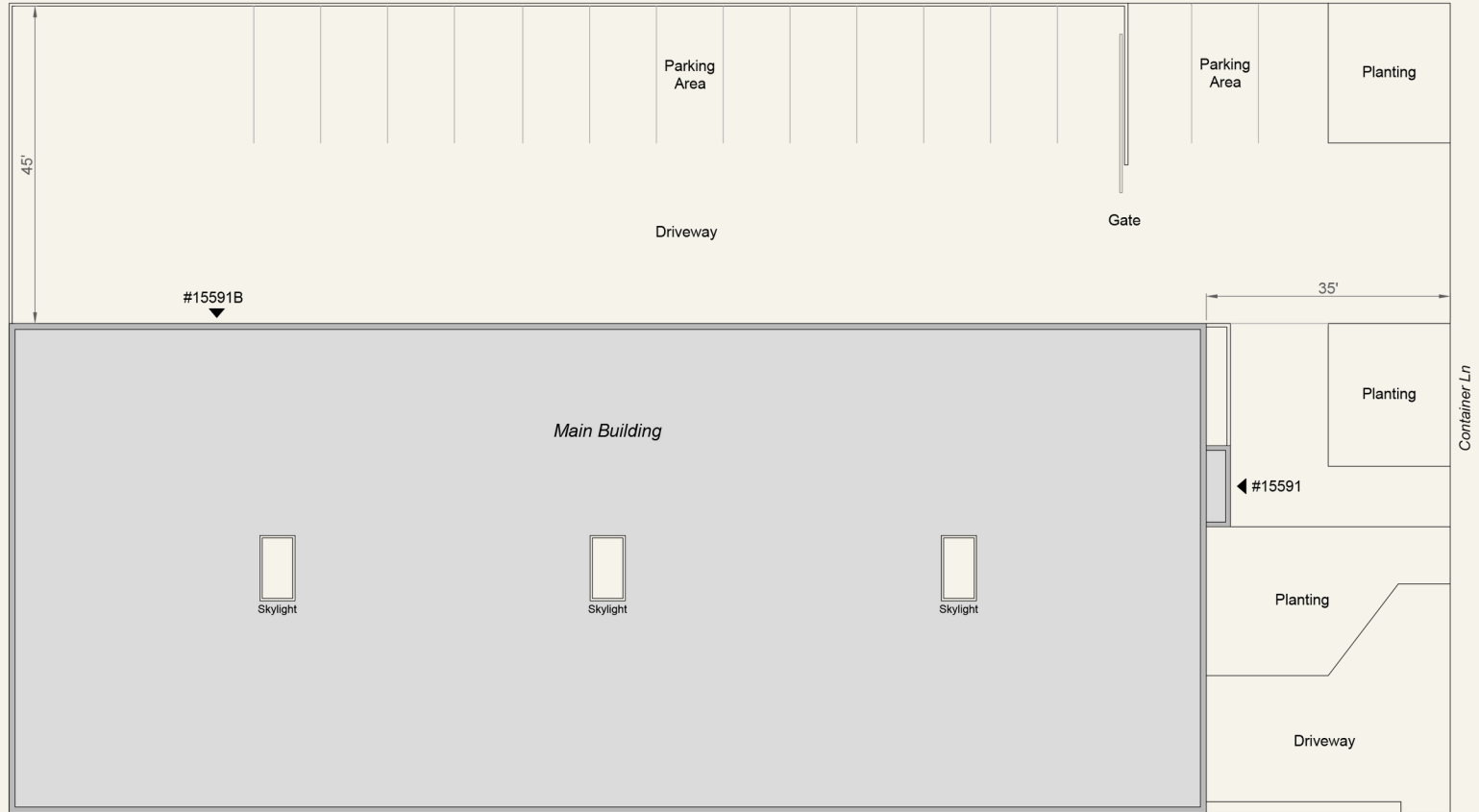




Floor Plan



Floor Plan



Area Highlights

15591 Container Lane offers exceptional accessibility and a dynamic surrounding environment that caters to a wide range of business needs. With quick access to LAX, Long Beach Airport, and John Wayne Airport, it's ideally positioned for both regional and international operations. Proximity to major freeways—including the 405, 22, and 605—ensures seamless commuting and efficient logistics for shipping and distribution. The site is also conveniently close to the Ports of Los Angeles and Long Beach, a significant advantage for import/export businesses. The surrounding business park is home to a diverse mix of industries, including Amazon, Harbor Distributing, TravisMathew, Cambro Manufacturing, and various companies specializing in boat repair, custom automotive, aerospace, and light manufacturing. Just minutes from Bolsa Chica and the ocean, the property blends industrial utility with coastal lifestyle appeal. Nearby amenities include Huntington Harbour Marina with a public boat launch—perfect for marine service businesses or recreational use—and Hot Rods & Handguns, an exclusive, members-only social and shooting club ideal for client entertainment or private events.



Area Highlights

PROXIMITY TO THE FOLLOWING

1. 15591 Container Lane
2. Huntington Harbour Marina
3. Port of Long Beach
4. Port of LA
5. Long Beach Airport
6. John Wayne Airport
7. LAX





ABOUT

Ashley Marie

Part of The Agency Corona Del Mar, Ashley Marie is a versatile real estate professional specializing in luxury residential, commercial, and industrial properties throughout Orange County. With over a decade of experience in high-level luxury sales and business operations, Ashley brings a sharp analytical approach and strategic mindset to every transaction.

Her expertise spans industrial buildings, mixed-use assets, and investment opportunities, with a focus on identifying value, unlocking potential, and delivering results. Leveraging The Agency's global marketing platform and her in-depth market knowledge, Ashley provides sophisticated representation for property owners, investors, and business operators seeking to maximize their real estate portfolio.

Whether advising on the sale of an industrial building, sourcing an off-market acquisition, or marketing a luxury property, Ashley's approach is defined by precision, discretion, and a results-driven strategy. Her ability to navigate both residential and commercial markets positions her as a trusted advisor for clients with diverse real estate needs.



Ashley Marie

AGENT

ASHLEY.MARIE@THEAGENCYRE.COM

973.570.2372 | LIC. #01997371

Thank You.

THEAGENCYRE.COM

The information contained in the following Offering Memorandum is proprietary and strictly confidential. It is intended to be reviewed only by the party receiving it from The Agency and it should not be made available to any other person or entity without the written consent of The Agency Commercial Division. By taking possession of and reviewing the information contained herein the recipient agrees to hold and treat all such information in the strictest confidence. The recipient further agrees that recipient will not photocopy or duplicate any part of the Offering Memorandum. If you have no interest in the subject property at this time, please return this Offering Memorandum to The Agency. This Offering Memorandum has been prepared to provide summary, unverified financial and physical information to prospective purchasers, and to establish only a preliminary level of interest in the subject property. The information contained herein is not a substitute for a thorough due diligence investigation. The Agency has not made any investigation, and makes no warranty or representation with respect to the income or expenses for the subject property, the future projected financial performance of the property, the size and square footage of the property and improvements, the presence or absence of contaminating substances, PCBs or asbestos, the compliance with local, state and federal regulations, the physical condition of the improvements thereon, or the financial condition or business prospects of any tenant, or any tenant's plans or intentions to continue its occupancy of the subject property. The information contained in this Offering Memorandum has been obtained from sources we believe to be reliable; however, The Agency has not verified, and will not verify, any of the information contained herein, nor has The Agency conducted any investigation regarding these matters and makes no warranty or representation whatsoever regarding the accuracy or completeness of the information provided. All potential buyers must take appropriate measures to verify all of the information set forth herein. Prospective buyers shall be responsible for their costs and expenses of investigating the subject property. Any rent or income information in this offering memorandum, with the exception of actual, historical rent collections, represent good faith projections of potential future rent only, and The Agency makes no representations as to whether such rent may actually be attainable. Local, state, and federal laws regarding restrictions on rent increases may make these projections impossible, and Buyer and its advisors should conduct their own investigation to determine whether such rent increases are legally permitted and reasonably attainable.