

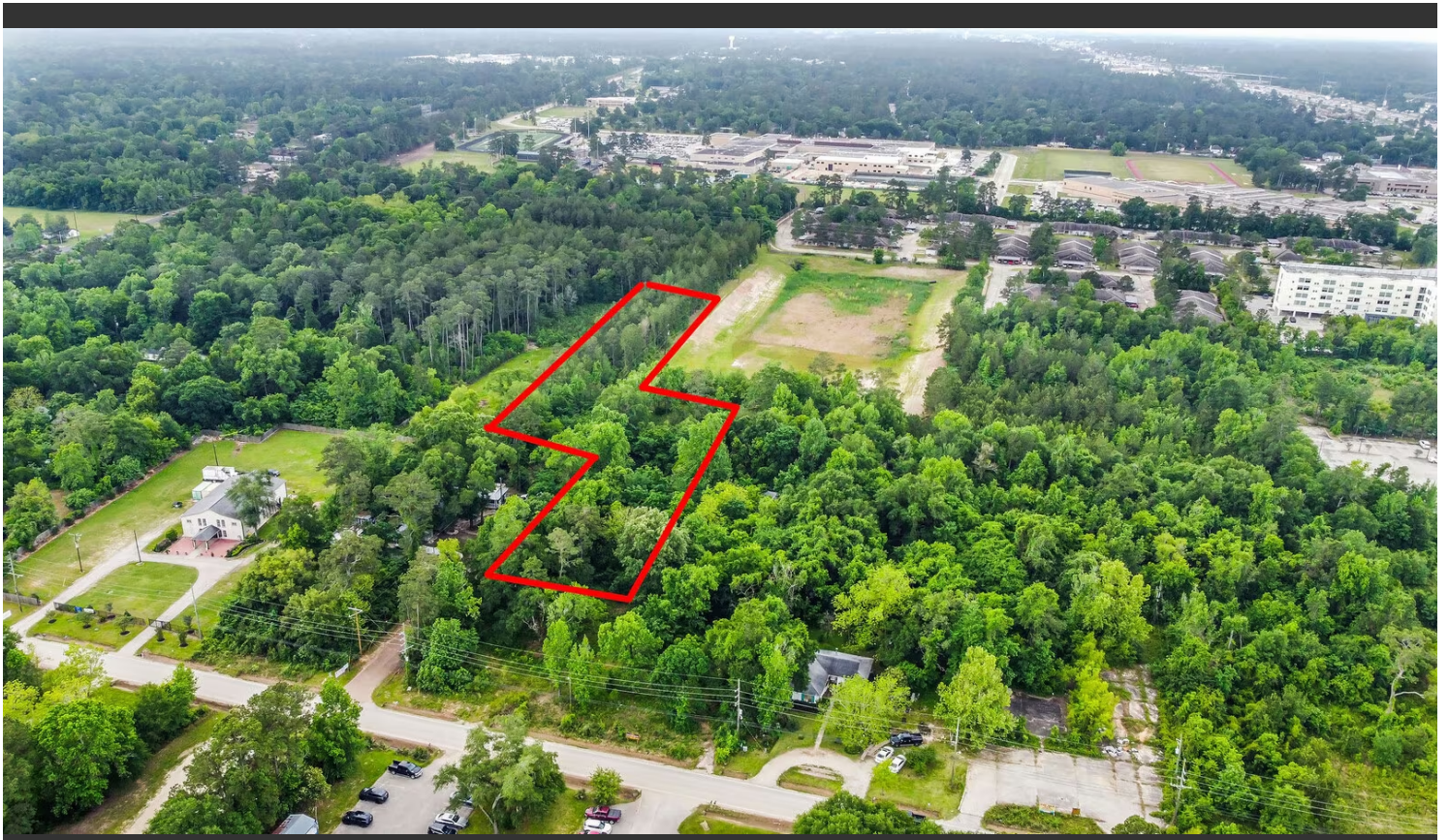


Nicky Gomez

8329983958



19216 Easley St - Prime Commercial Woodlands/Conroe Land 2.4 Acres of Commercial Land in Conroe, TX



INVESTMENT HIGHLIGHTS

- Great opportunity for investor to purchase this +/- 2 acres

EXECUTIVE SUMMARY

Contact agent for more information 832-998-3958

PROPERTY FACTS

Sale Type	Investment
No. Lots	1
Property Type	Land
Property Subtype	Commercial
Proposed Use	Retail
Total Lot Size	2.40 AC

1 LOT AVAILABLE

Lot

Lot Size 2.40 AC

This +/- 2 acres and is ready for development. Access to Tamina Road just east of The Woodlands at Research Forest Drive.

DESCRIPTION

Great opportunity for owner/user or investor to purchase. Additional +/- 6 acres available nearby on Tamina Road. The opportunities this commercial lot offers are endless. The entire

area is prime for new development including but not limited to area businesses, hotels, hospitals, medical buildings, office space.