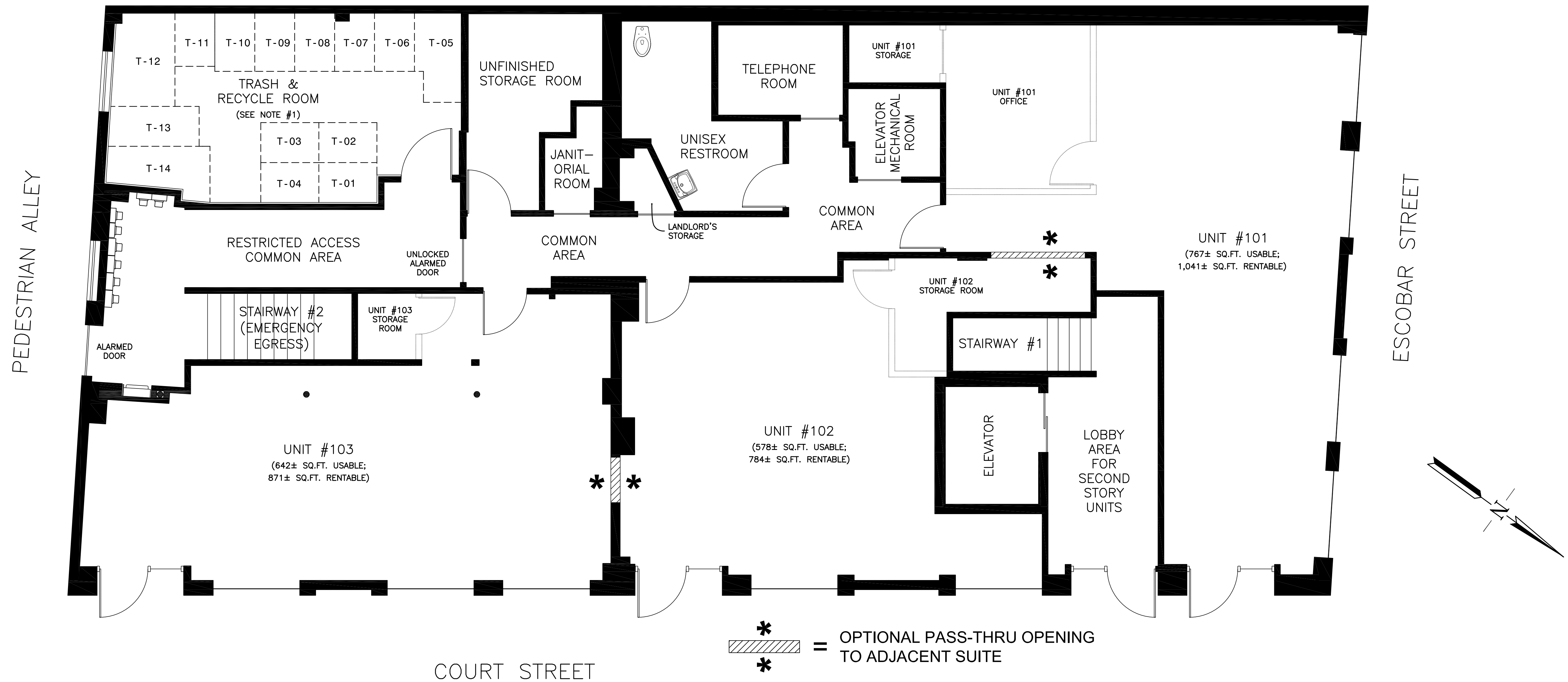


# 610 COURT STREET

## FIRST STORY FLOOR PLAN

NOTE #1: UNITS 101, 102, 103, 204, 205 AND 206 ARE TO BE ASSIGNED ONE SPACE FOR TRASH AND ONE SPACE FOR RECYCLING, UNLESS OTHERWISE STATED IN THE LEASE. UNIT T-05, UNIT T-06, UNIT T-12 AND UNIT T-13 HAVE SPECIAL RESTRICTIONS UNIQUE TO THEM.



NOTES:

(1) THIS DRAWING IS SUBJECT TO REVISION DUE TO "CHANGE ORDERS" THAT MAY OCCUR DURING CONSTRUCTION.

(2) ALL SQUARE FOOT FIGURES ARE PER BOMA 2010-A, AS MEASURED BY A BOMA CERTIFIED COMPANY.

"SOUTHPORT LAND AND COMMERCIAL COMPANY" and "SOUTHPORT LAND" are Registered in U.S. Patent and Trademark Office.

© 2013-2022

JOB NO.	610-1
SCALE	N/A
DATE	02/16/23
REVISION NO.	08
DRAWING NO.	
SH	OF
1	2