

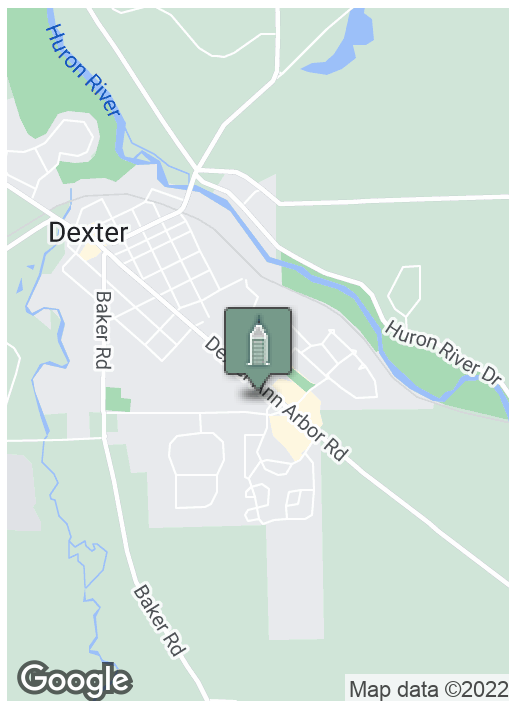
Office | Retail Condo Suites

7200 DAN HOEY, STE F & F2, DEXTER, MI 48130



Swisher
COMMERCIAL

**FOR SALE
OR LEASE**



SUMMARY

Suite F - 1,300 SF:	\$250,000
Suite F2 - 1,300 SF:	\$250,000
Suites F & F2 - 2,600 SF:	\$500,000
Lease Rate:	\$17.00 SF/yr NNN
Renovated:	2019
Zoning:	PUD

PROPERTY HIGHLIGHTS

- Dexter Commerce Center
- Popular retail/professional center
- Excellent visibility
- Two 1,300 SF suites available that can be combined
- Building and monument signage available
- Ample parking front and back of building
- City of Dexter, corner of Dexter-Ann Arbor (Main Street) and Dan Hoey

***Building
relationships.***

208 East Washington Street Ann Arbor, MI 48104

734.663.0501

Jeff Evans

734.926.0222

JEFFEVANS@SWISHERCOMMERCIAL.COM

SWISHERCOMMERCIAL.COM

Office | Retail Condo Suites - Sale or Lease

7200 DAN HOEY, STE F & F2, DEXTER, MI 48130



Building relationships.

208 East Washington Street Ann Arbor, MI 48104

734.663.0501

Jeff Evans

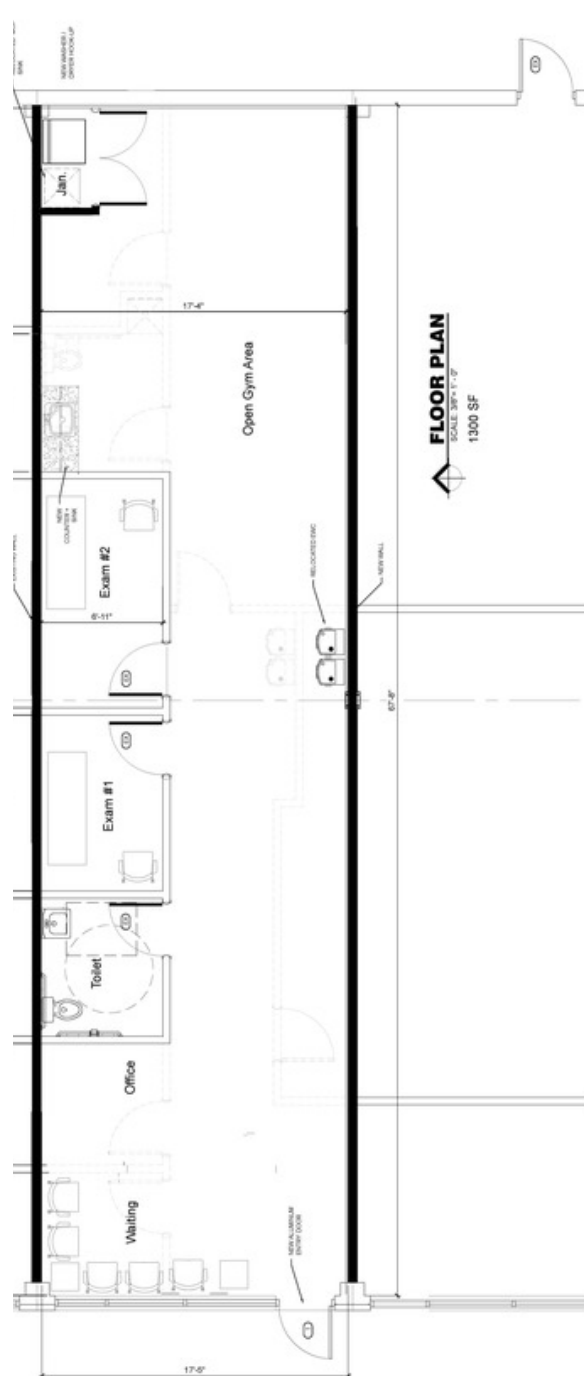
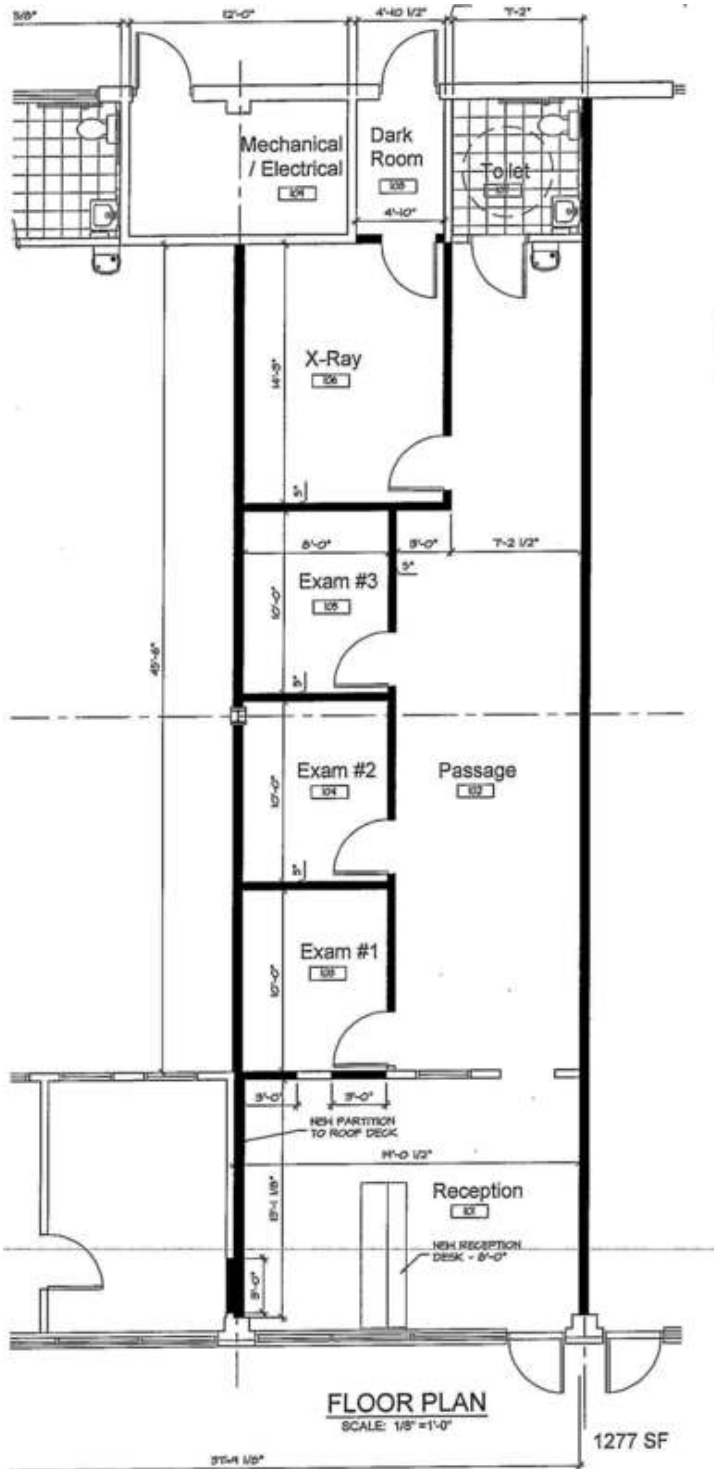
734.926.0222

JEFFEVANS@SWISHERCOMMERCIAL.COM

SWISHERCOMMERCIAL.COM

Office | Retail Condo Suites - Sale or Lease

7200 DAN HOEY, STE F & F2, DEXTER, MI 48130



Building relationships.

208 East Washington Street Ann Arbor, MI 48104

734.663.0501

Jeff Evans

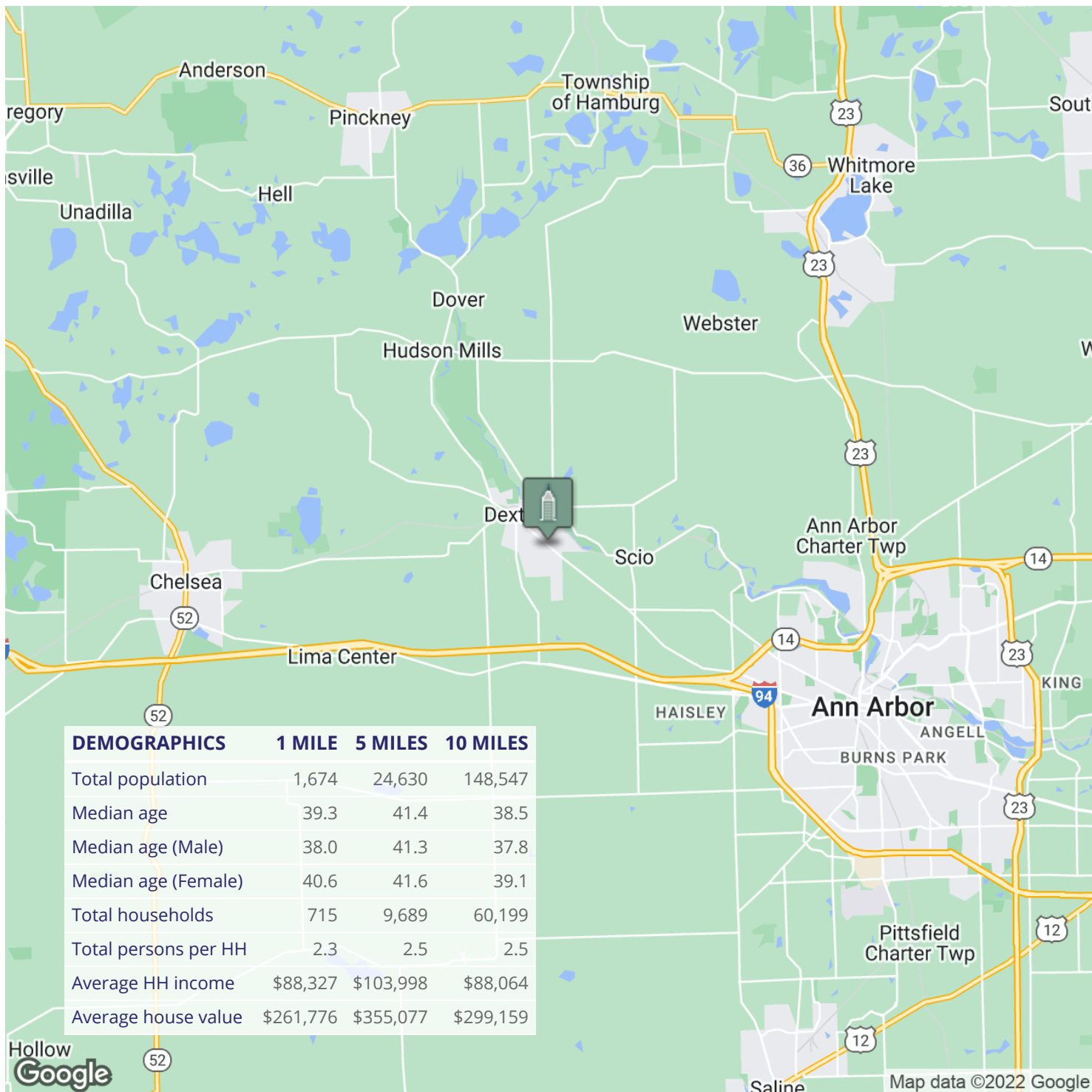
734.926.0222

JEFFEVANS@SWISHERCOMMERCIAL.COM

SWISHERCOMMERCIAL.COM

Office | Retail Condo Suites - Sale or Lease

7200 DAN HOEY, STE F & F2, DEXTER, MI 48130



Building relationships.

208 East Washington Street Ann Arbor, MI 48104

734.663.0501

Jeff Evans

734.926.0222

JEFFEVANS@SWISHERCOMMERCIAL.COM

SWISHERCOMMERCIAL.COM