

12,679 - 35,598 SF FOR LEASE

# 4610-4612 MCEWEN ROAD

FARMERS BRANCH, TEXAS 75244



**DJ DRAPER**  
Vice President  
731.819.1008  
ddraper@stoicrep.com

**CHAD ALBERT, SIOR**  
Founder & Managing Partner  
214.287.4251  
calbert@stoicrep.com



12,679 - 35,598 SF FOR LEASE

# 4610-4612 MCEWEN ROAD

FARMERS BRANCH, TEXAS 75244

## PROPERTY FEATURES

### SUITE 4610

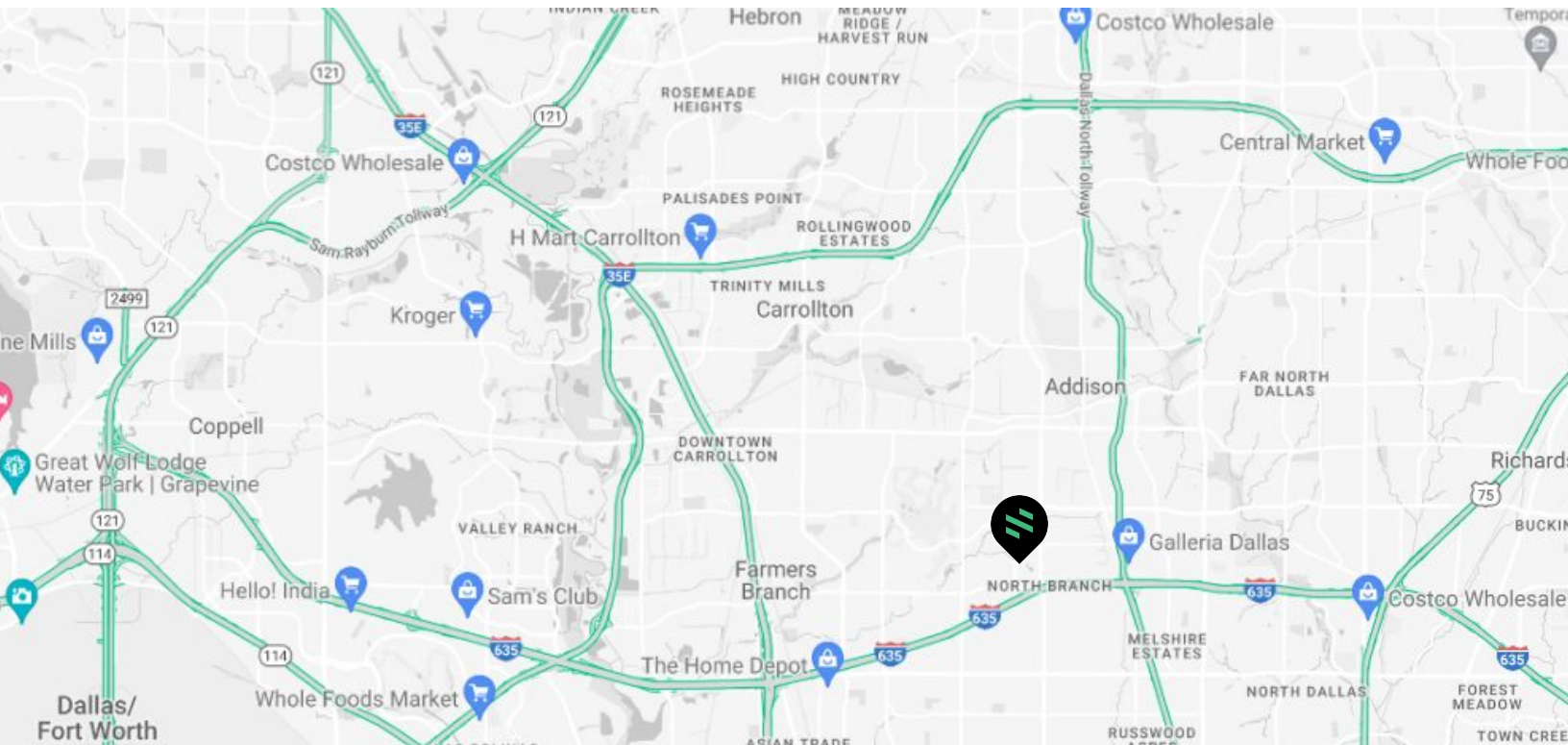
- // 22,919 SF
- // 5,953 SF Office
- // 16,936 SF Warehouse (Partially Temperature Controlled)
- // Seven (7) Dock Doors
- // 22' Clear Height

### SUITE 4612

- // 12,679 SF
- // 2,830 SF Office
- // 9,849 SF Warehouse
- // Four (4) Dock Doors
- // 22' Clear Height

### SUITE 4610-4612

- // 35,598 SF
- // 8,783 SF Office
- // 26,785 SF Warehouse (Partially Temperature Controlled)
- // Eleven (11) Dock Doors
- // 22' Clear Height



DJ DRAPER  
Vice President  
731.819.1008

[ddraper@stoicrep.com](mailto:ddraper@stoicrep.com)

CHAD ALBERT, SIOR  
Founder & Managing Partner  
214.287.4251

[calbert@stoicrep.com](mailto:calbert@stoicrep.com)



12,679 - 35,598 SF FOR LEASE

# 4610-4612 MCEWEN ROAD

FARMERS BRANCH, TEXAS 75244



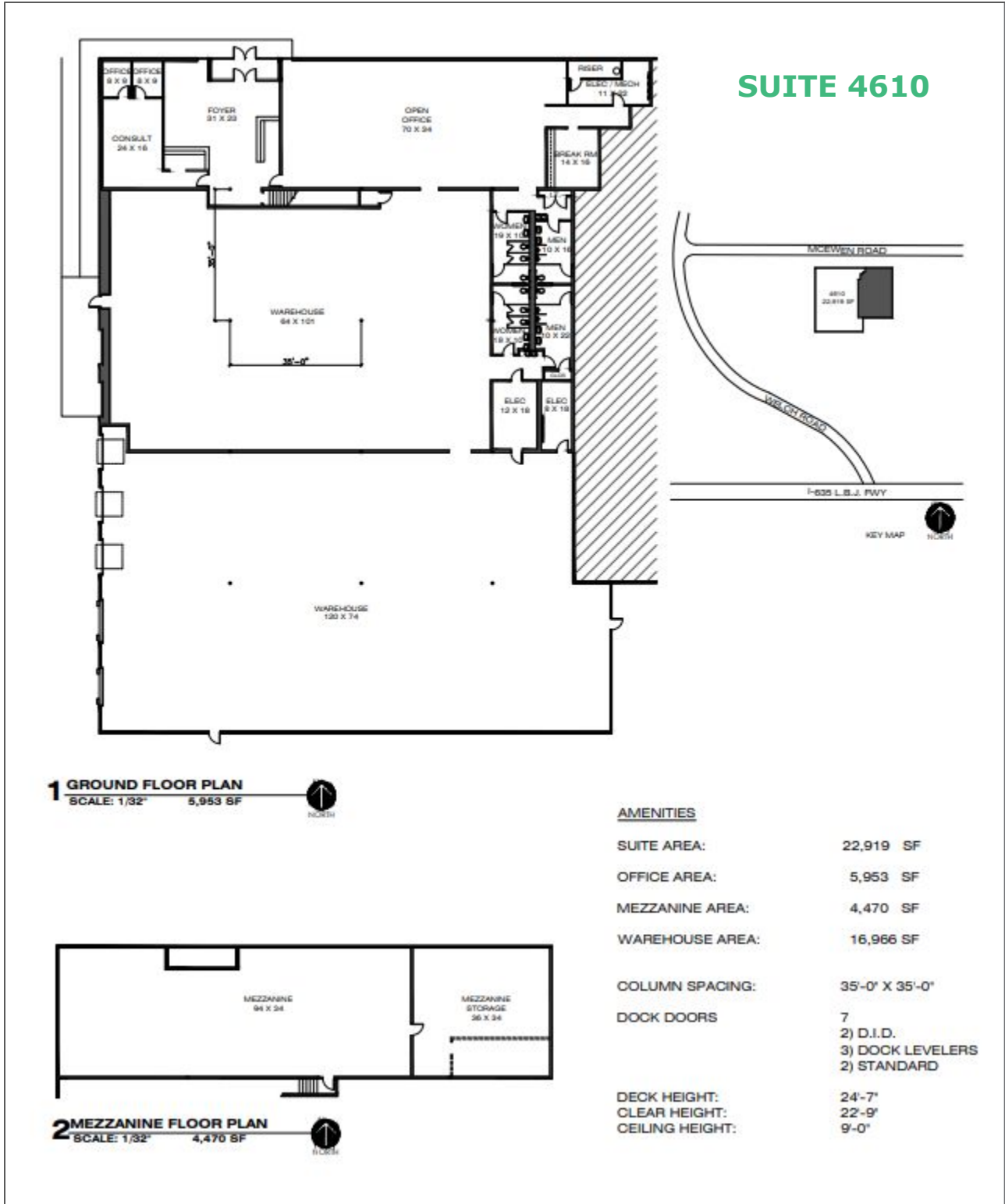
DJ DRAPER  
Vice President  
731.819.1008  
ddraper@stoicrep.com

CHAD ALBERT, SIOR  
Founder & Managing Partner  
214.287.4251  
calbert@stoicrep.com

12,679 - 35,598 SF FOR LEASE

# 4610-4612 MCEWEN ROAD

FARMERS BRANCH, TEXAS 75244





12,679 - 35,598 SF FOR LEASE

# 4610-4612 MCEWEN ROAD

FARMERS BRANCH, TEXAS 75244

