



Specifications

±46,530 SF TOTAL BUILDING SIZE	±14' (30,042 SF Whse) ±24' (10,088 SF Whse) ±14' (6,400 SF Whse) CEILING HEIGHTS
±2.75 AC TOTAL ACREAGE	
Gas Suspended HEAT	208VAC 3Ph 600Amp POWER
Wet SPRINKLER SYSTEM	Solar Roof Panels COMMENTS
5 TB, 1 DI LOADING	±\$2.10 PSF TAXES (2024)
70 Car Stalls PARKING	
Industrial ZONING	
0.4 Miles to Route 22 1.6 Miles to I-78 3.1 Miles to GSP Exit 140 10.5 Miles to Ports Newark/Elizabeth ACCESSIBILITY	

For additional property information or to arrange an inspection, please contact the exclusive brokers:

Jason M. Crimmins, CCIM, SIOR
President
973.379.6644 x 122
jmcrimmins@blauberg.com

Alessandro (Alex) Conte, CCIM, SIOR
Executive Vice President
973.379.6644 x 131
aconte@blauberg.com

Peter J. Murano, Jr., SIOR
Managing Executive Director
973.379.6644 x 114
pjmurano@blauberg.com

FOR LEASE | 1160 SPRINGFIELD ROAD | UNION, NJ



For additional property information or to arrange an inspection, please contact the exclusive brokers:

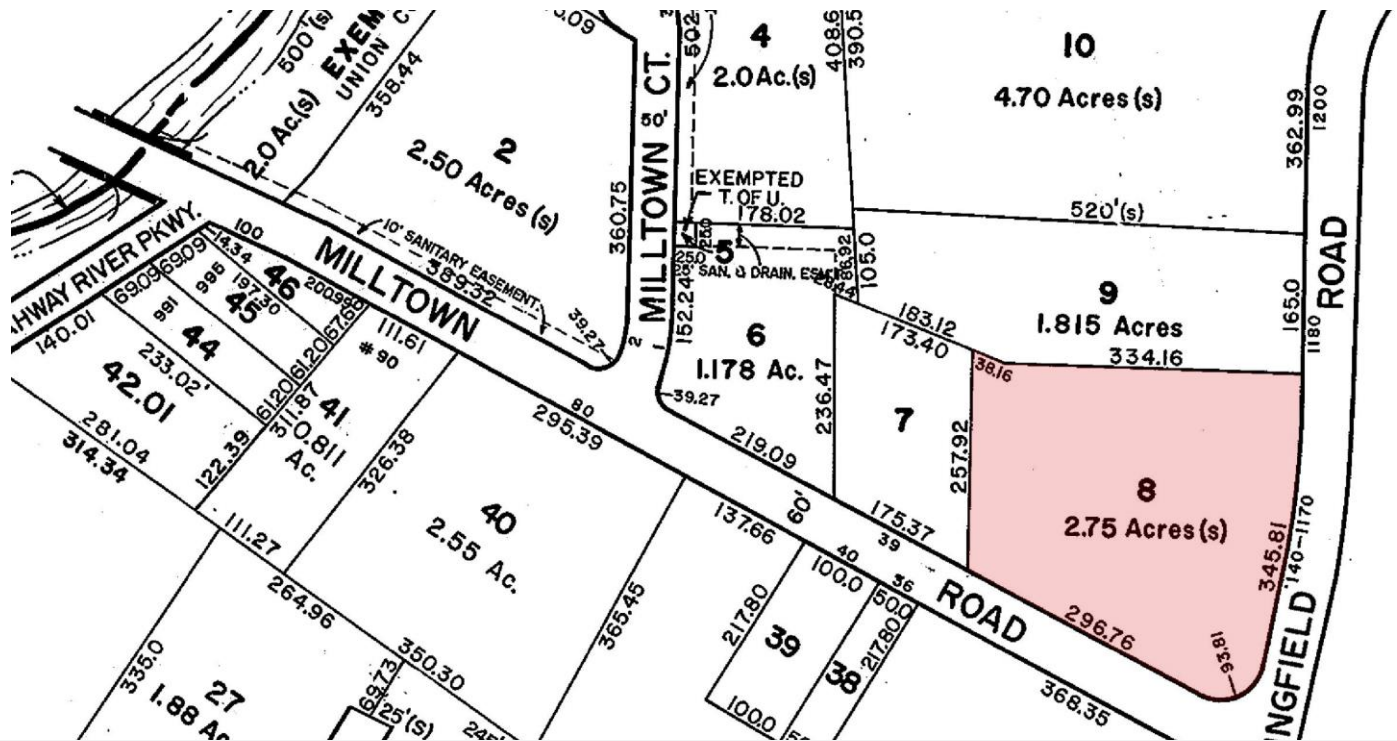
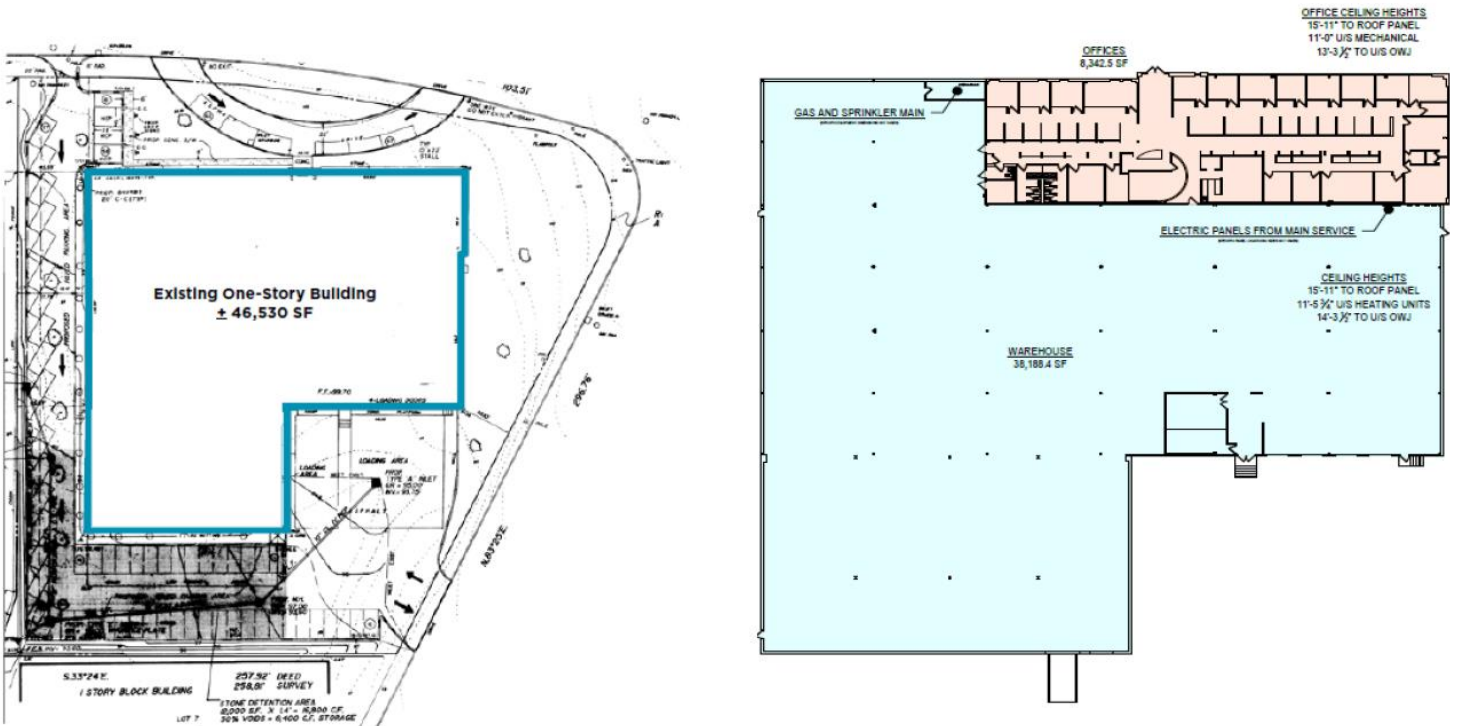
Jason M. Crimmins, CCIM, SIOR
President
973.379.6644 x 122
jmcrimmins@blauberg.com

Alessandro (Alex) Conte, CCIM, SIOR
Executive Vice President
973.379.6644 x 131
aconte@blauberg.com

Peter J. Murano, Jr., SIOR
Managing Executive Director
973.379.6644 x 114
pjmurano@blauberg.com

The information contained herein has been obtained from sources considered to be reliable, but no guarantee of its accuracy is made by this company. In addition, no representation is made respecting zoning, condition of title, dimensions, or any matters of a legal or environmental nature. Such matters should be referred to legal counsel for determination. Terms and conditions are subject to change without prior notice. Subject to errors and omissions.



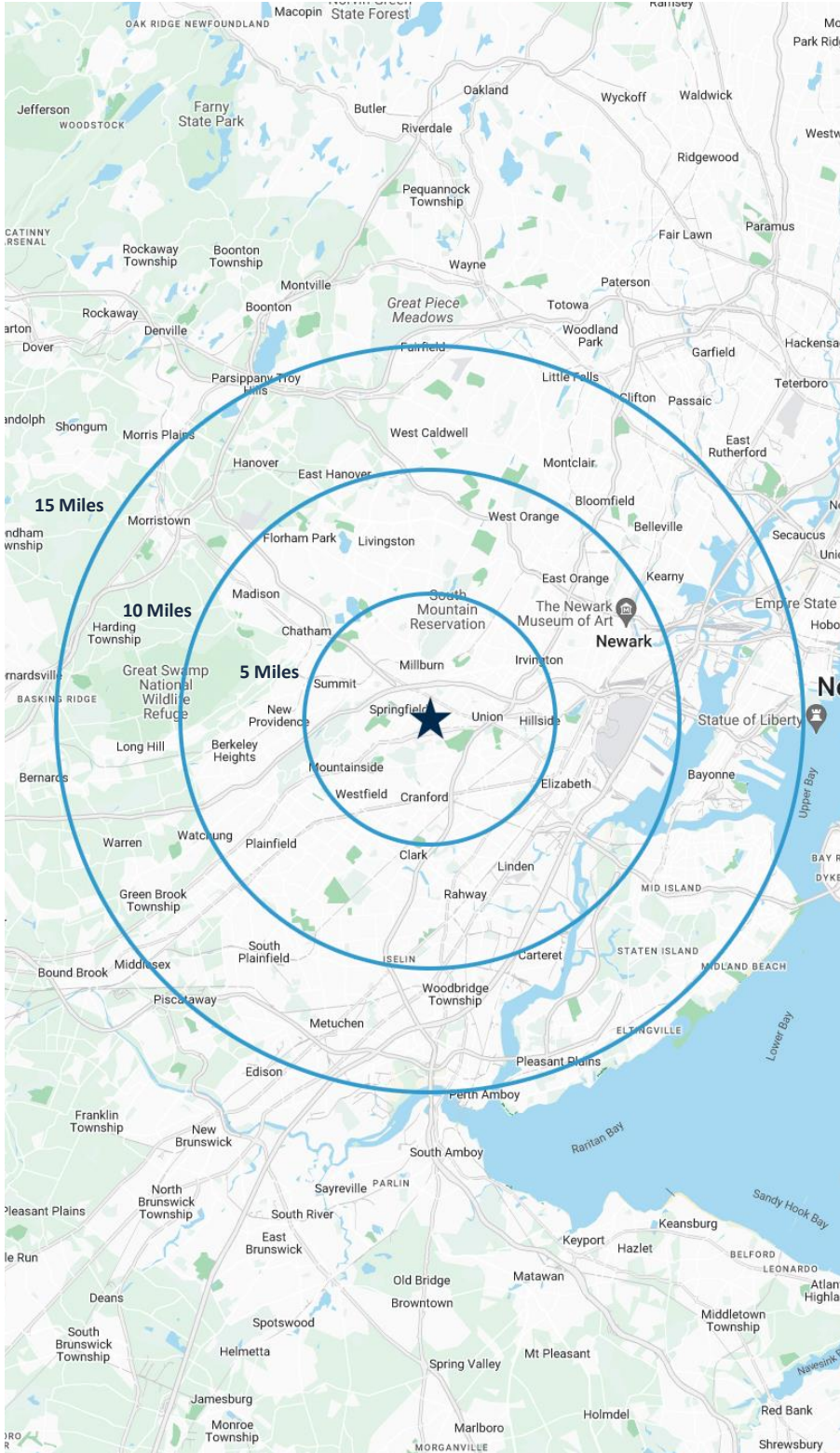


For additional property information or to arrange an inspection, please contact the exclusive brokers:

Jason M. Crimmins, CCIM, SIOR
 President
 973.379.6644 x 122
 jmcrimmins@blauberg.com

Alessandro (Alex) Conte, CCIM, SIOR
 Executive Vice President
 973.379.6644 x 131
 acont@blauberg.com

Peter J. Murano, Jr., SIOR
 Managing Executive Director
 973.379.6644 x 114
 pjmurano@blauberg.com



5 MILES

- Total Population: 492,732
- Households: 176,924
- Median Household Income: \$124,112
- Average Household Size: 2.8
- Transportation to Work: 270,632
- Labor Force: 396,640

10 MILES

- Total Population: 1.7M
- Households: 615,623
- Median Household Income: \$106,774
- Average Household Size: 2.7
- Transportation to Work: 882,923
- Labor Force: 1.36M

15 MILES

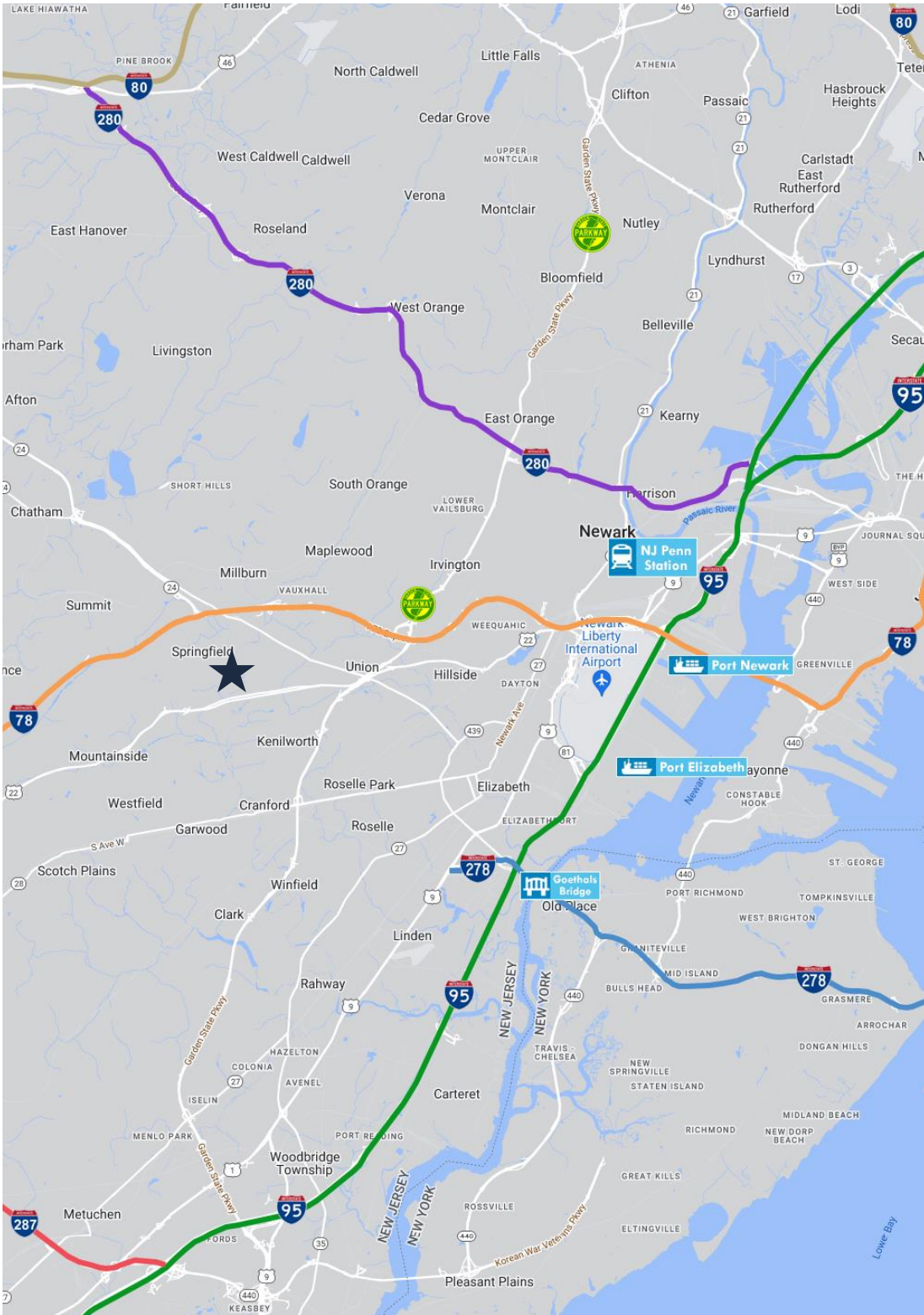
- Total Population: 3.41M
- Households: 1.26M
- Median Household Income: \$113,360
- Average Household Size: 2.7
- Transportation to Work: 1.8M
- Labor Force: 2.77M

For additional property information or to arrange an inspection, please contact the exclusive brokers:

Jason M. Crimmins, CCIM, SIOR
President
973.379.6644 x 122
jmcrimmins@blauberg.com

Alessandro (Alex) Conte, CCIM, SIOR
Executive Vice President
973.379.6644 x 131
aconte@blauberg.com

Peter J. Murano, Jr., SIOR
Managing Executive Director
973.379.6644 x 114
pjmurano@blauberg.com




ACCESSIBILITY

 0.4 MI
Route 22

 1.6 MI
I-78

 3.1 MI
GSP Exit 140

 7.6 MI
I-95 Exit 14

 10.3 MI
EWR

 10.5 MI
Ports Newark and Elizabeth

 10.4 MI
Penn Station

 18.2 MI
Holland Tunnel

 19.4 MI
Lincoln Tunnel

For additional property information or to arrange an inspection, please contact the exclusive brokers:

Jason M. Crimmins, CCIM, SIOR
President
973.379.6644 x 122
jmcrimmins@blauberg.com

Alessandro (Alex) Conte, CCIM, SIOR
Executive Vice President
973.379.6644 x 131
aconte@blauberg.com

Peter J. Murano, Jr., SIOR
Managing Executive Director
973.379.6644 x 114
pjmurano@blauberg.com

The information contained herein has been obtained from sources considered to be reliable, but no guarantee of its accuracy is made by this company. In addition, no representation is made respecting zoning, condition of title, dimensions, or any matters of a legal or environmental nature. Such matters should be referred to legal counsel for determination. Terms and conditions are subject to change without prior notice. Subject to errors and omissions.