

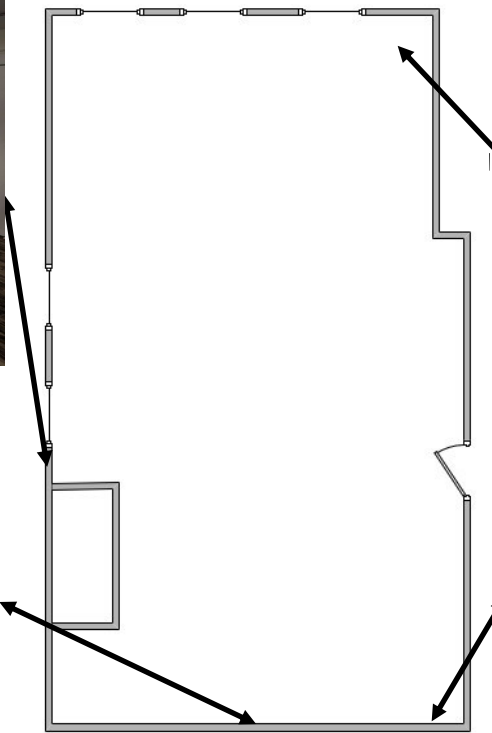
800 sq. ft. for lease | Cambridge Central Square

Building located near the Central Square T station on the Red Line.



Near bus routes:
1, 47, 64, 68, 70,
83, 91, CT1

720 Mass Ave Ste 10 3rd floor



Newly renovated move-in ready 800 RSF open office:
new HVAC, new flooring, new lighting fixtures.

v1

Patrick Verbeke | KW Commercial | KW Boston NW | Cambridge, MA
617-230-3638 | Patrick@ValtiRealEstate.com | ValtiCommercial.com

