

1,100 - 3,960 SF

AVAILABLE



DAVITA CENTER

RETAIL/OFFICE SPACE FOR LEASE

831 EISENHOWER RD • RETAIL CENTER • LANSING, KS

CHASE GLAESER

816.268.9110 / cglaeser@lane4group.com

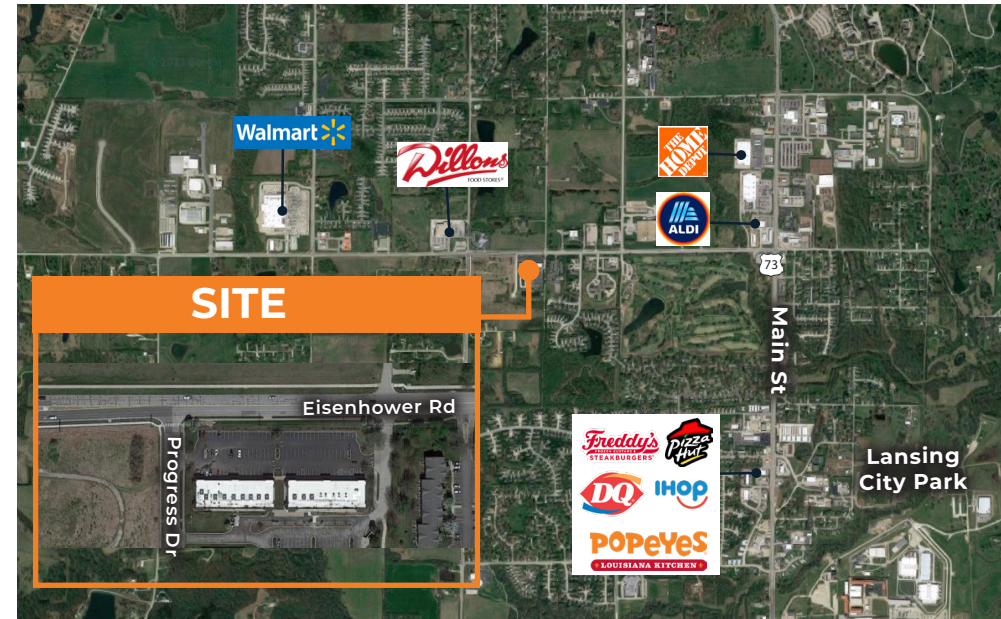
ANDREW SANDBURG

816.268.9111 / asandburg@lane4group.com

PROPERTY HIGHLIGHTS

- Retail and Office Space available for lease:
 - **1,100 SF** former salon space
 - **1,320 SF** former office space
 - **1,320 SF** former office space
 - Spaces contiguous up to **3,740 SF**
 - **3,960 SF** former chiropractic/physical therapy space
- Great visibility to Eisenhower Rd with over 14,000 CPD
- Ideally positioned between Main St retail corridor and anchor grocers
- \$116,000+ average HH income within 1-mile of center

DEMOGRAPHICS	1 MI	3 MI	5 MI
Population	5,122	29,222	45,571
Avg. HH Income	\$116,732	\$98,225	\$91,670
# of Businesses	130	724	1,330
# of Employees	2,129	10,168	15,826



SITE PLAN

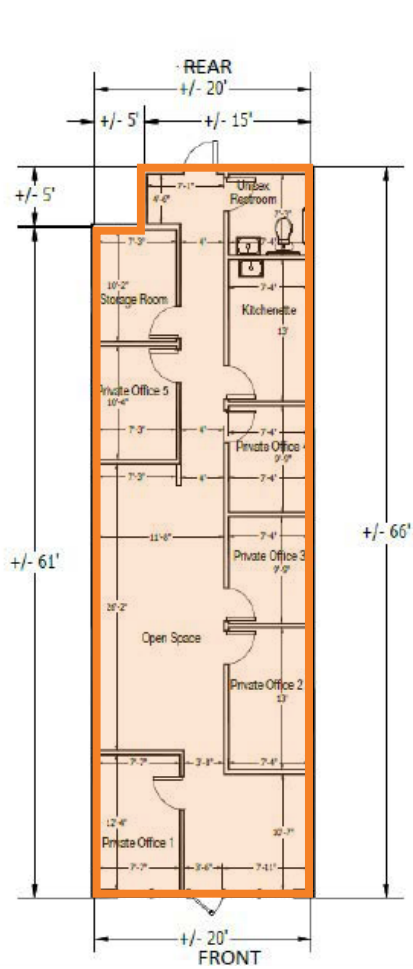
AVAILABILITY

SUITE	SF
C	1,100
D	1,320
E	1,320
I	3,960

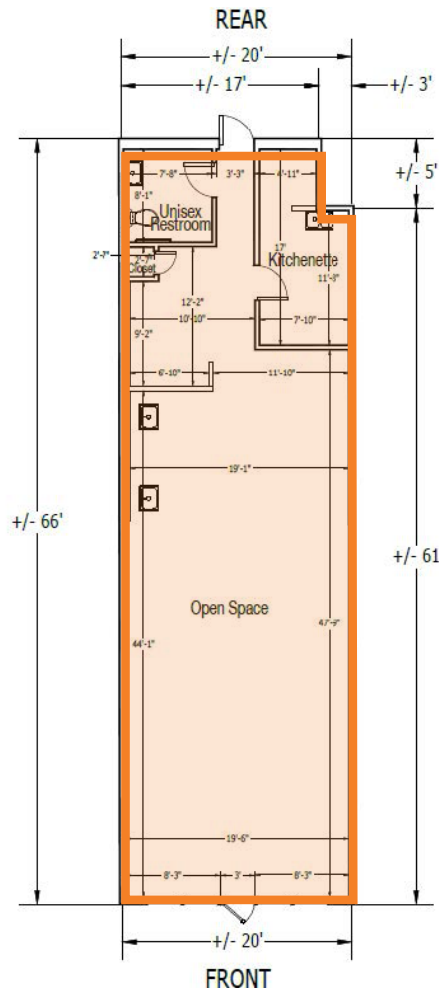
Combine to
3,740 SF



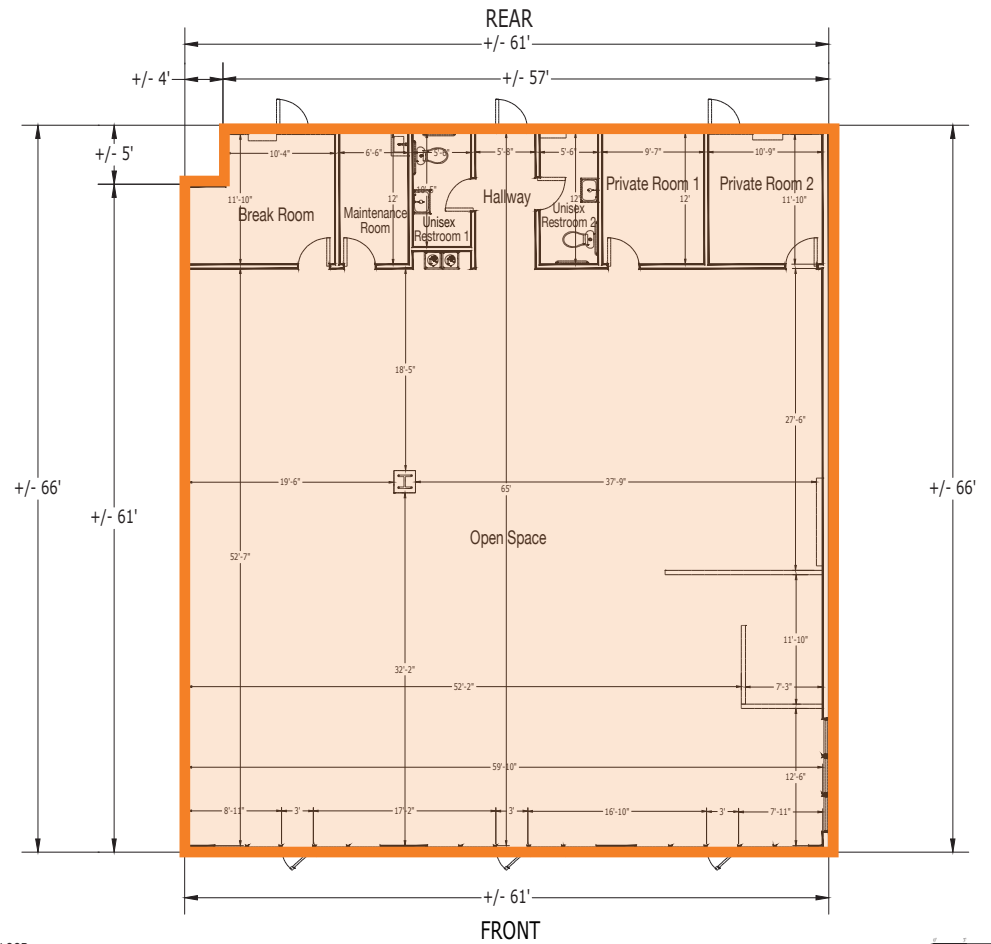
FLOOR PLANS



SUITE D
1,320 SF



SUITE C
1,100 SF



SUITE I
3,960 SF

