

Edge Industrial Park

12101 Worthington Rd., Pataskala, OH

FOR LEASE

PROPERTY
VIDEO:



Warehouse Space Available

60,000 - 255,000 Square Feet

Building 2 | Delivery Q4 2025

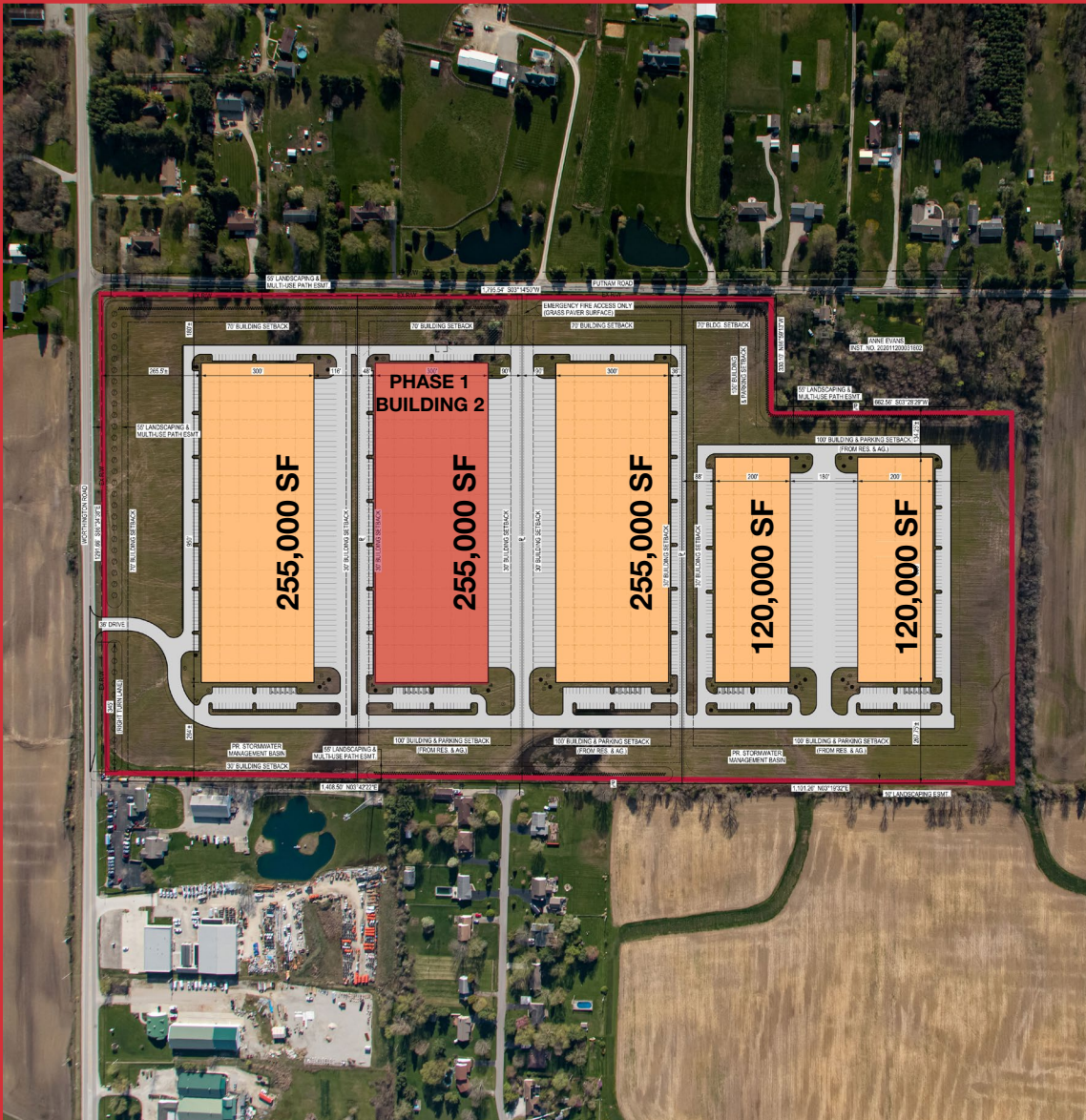
NAI Ohio Equities
Industrial Property Team

MATT OSOWSKI, SIOR
mosowski@ohioequities.com
614 629 5229

CURT BERLIN, SIOR
cberlin@ohioequities.com
614 629 5221

BLAKE DECRANE, SIOR
bdecrane@ohioequities.com
614 629 5269

DEVELOPMENT HIGHLIGHTS



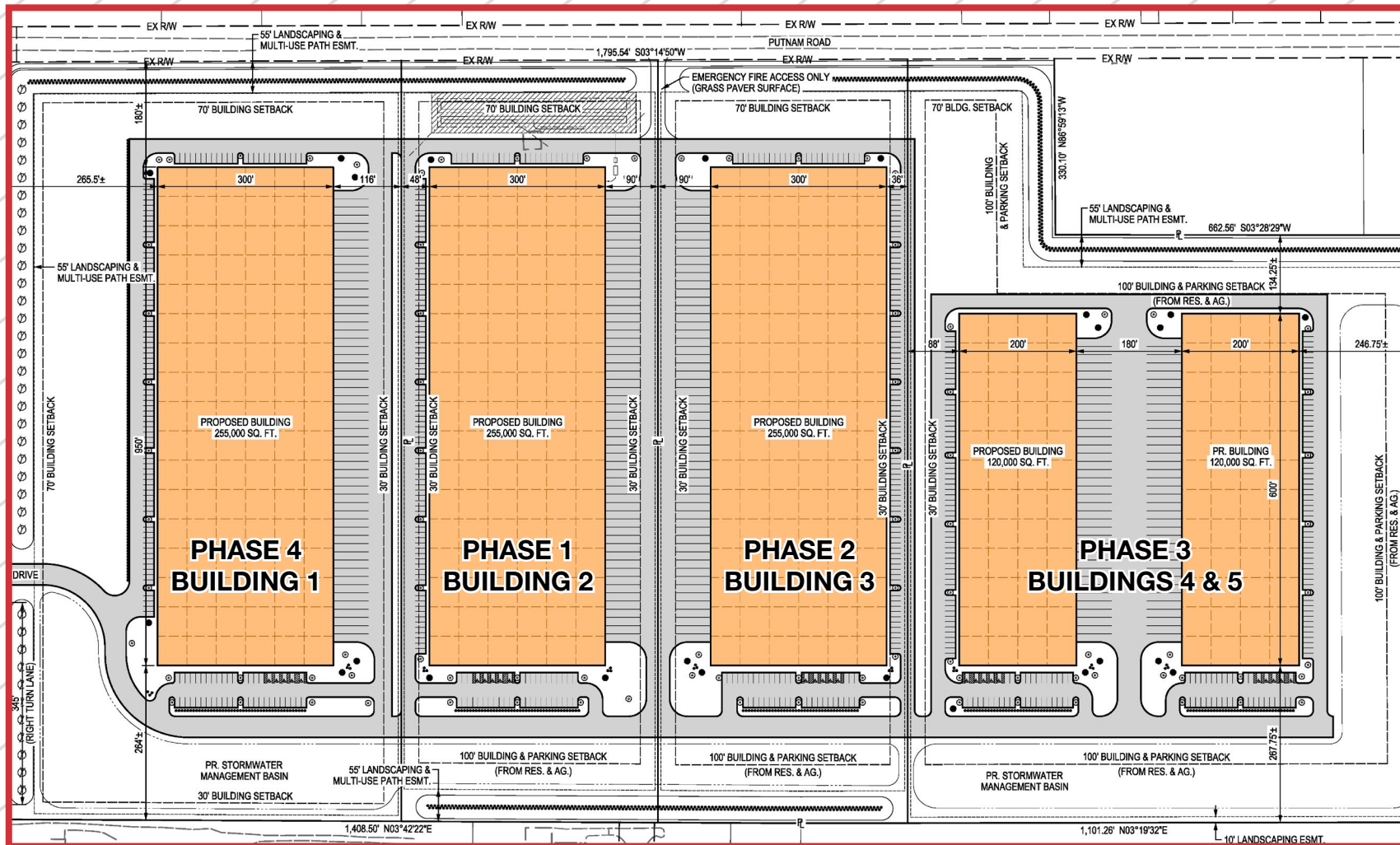
Development Features

| | |
|---------------------|--------------------------------|
| SITE ACREAGE | 71± Acres |
| # OF BUILDINGS | 5 |
| BUILDING DIMENSIONS | 950' x 300' |
| BAY SIZE | 16,500 SF |
| BUILDING SIZES | 120,000-255,000 SF |
| TRUCK COURT DEPTH | 180' - Shared |
| MUNICIPALITY | Jersey Township |
| ZONING | Planned Unit Development (PUD) |

Building 2 Features

| | |
|-----------------|--|
| AVAILABLE SF | 60,000-255,000 SF |
| OFFICE SPACE | 3,000 SF Spec Office |
| DOCK DOORS | 27 (9' x 10') (Ability to have up to 57) |
| DRIVE-INS | 4 (12' x 14') |
| CLEAR HEIGHT | 32' |
| COLUMN SPACING | 50' x 50' |
| BAYS | 60' Speed Bay |
| SPRINKLERS | ESFR |
| LIGHTING | LED |
| POWER | 4000 Amp, 480 Volt, 3 Phase Power |
| TRAILER PARKING | 65 Spaces |
| CAR PARKING | 149 Spaces |

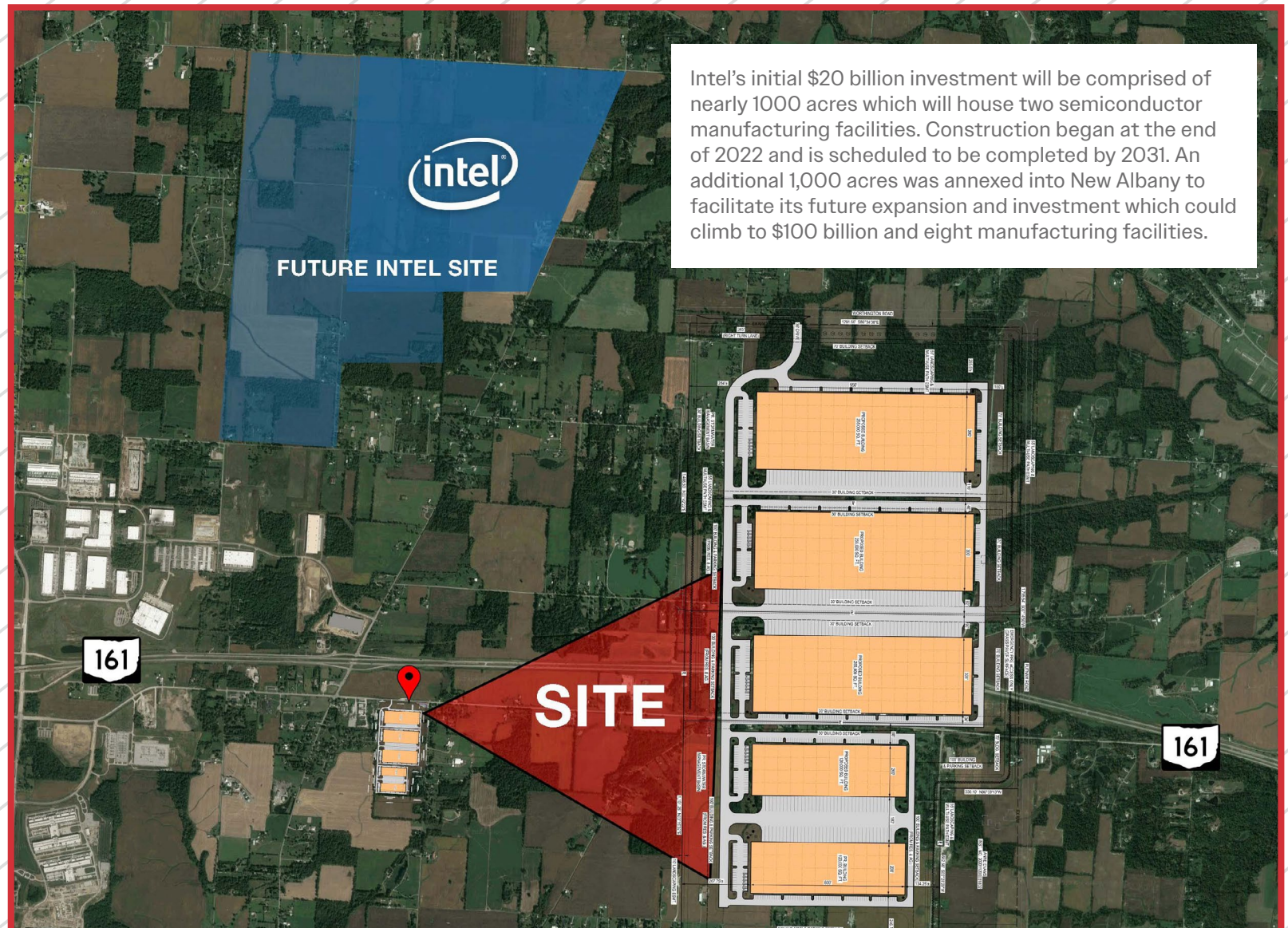
EDGE INDUSTRIAL PARK SITE PLAN



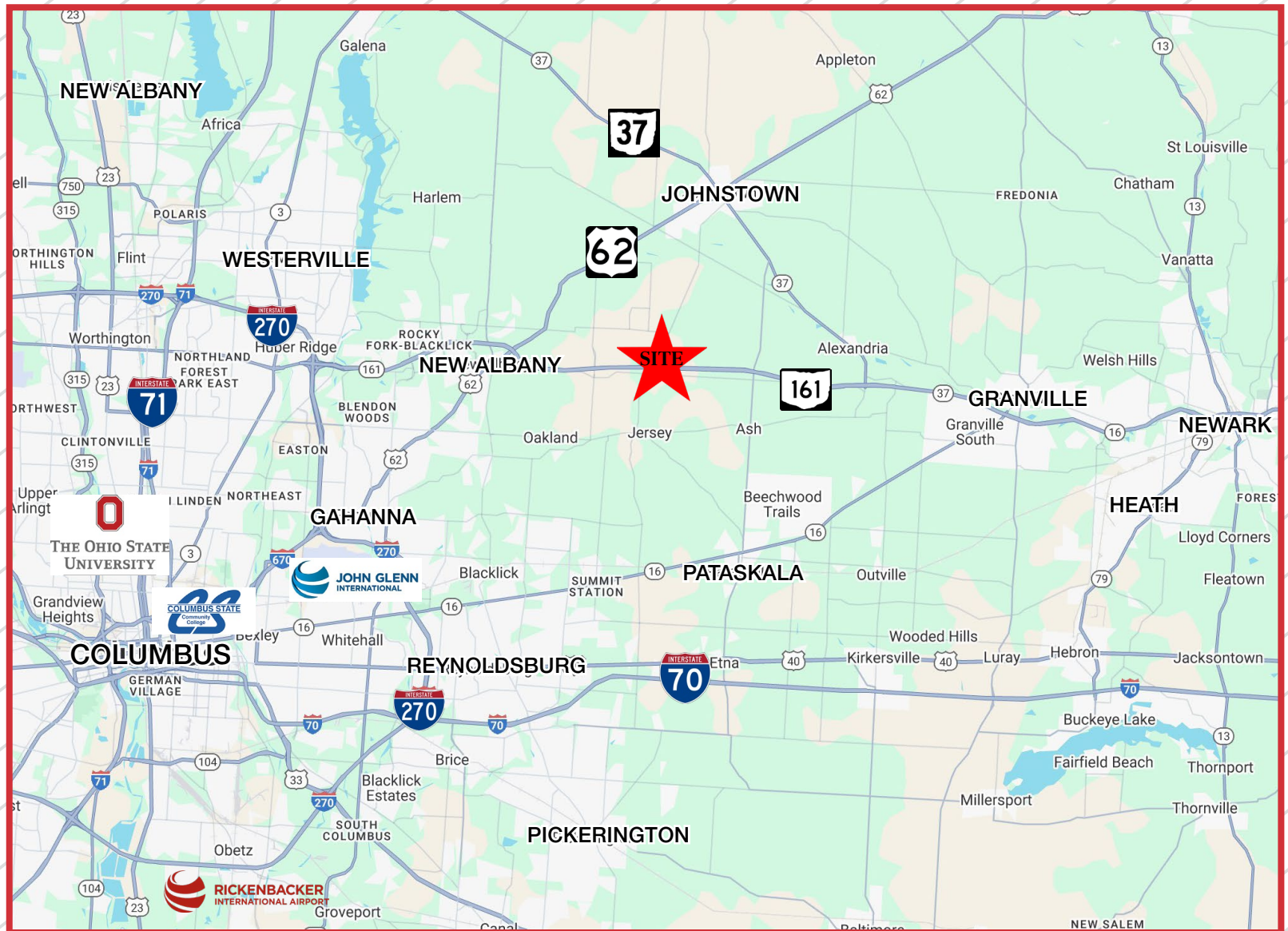
NEARBY EMPLOYERS



LOCATION

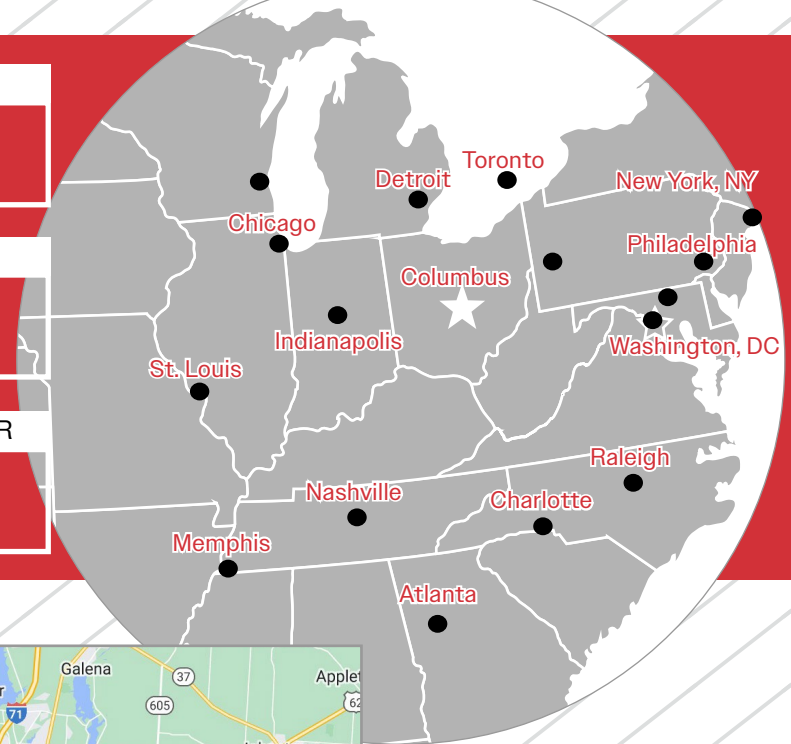


REGIONAL MAP



TRAVEL TIMES

500 miles



Chicago, IL

317 Miles

Washington, DC

389 Miles

Toronto, ON, Canada

432 Miles

St. Louis, MO

441 Miles

New York, NY

528 Miles

Atlanta, GA

549 Miles

SITE TO NEW ALBANY

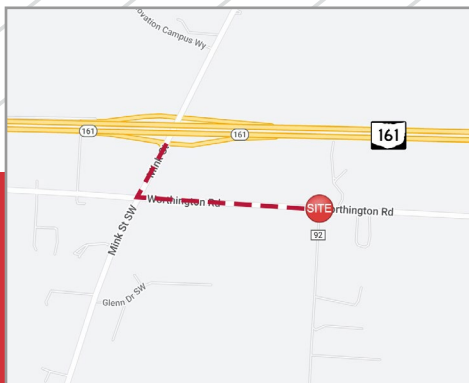
5 Miles

SITE TO INTEL CAMPUS

3.1 Miles

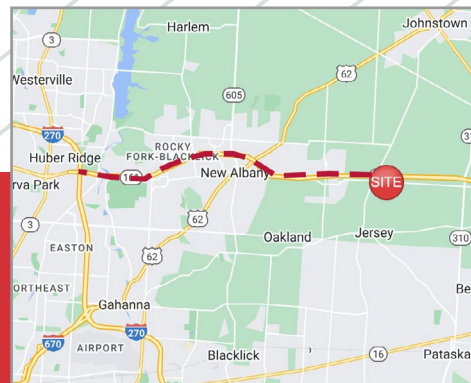
SITE TO RICKENBACKER

26 Miles



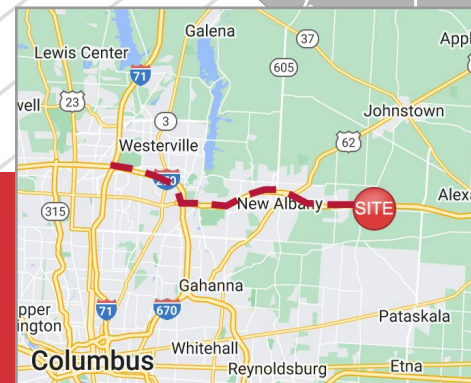
SITE TO SR-161

0.7 Miles



SITE TO I-270

12 Miles



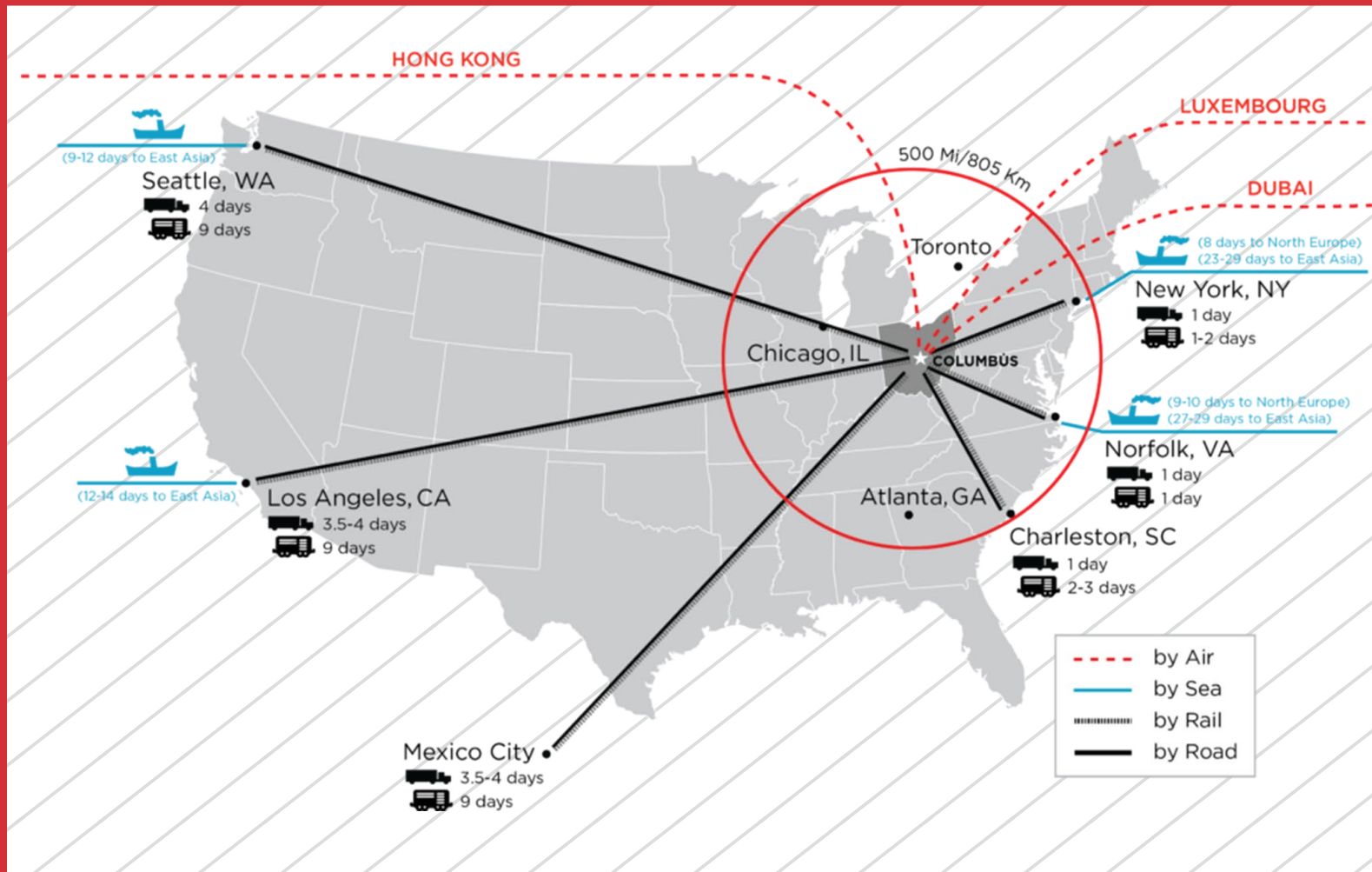
SITE TO I-71

15 Miles

ACCESS MAP

The Columbus Region is a global logistics hub that supports some of the world's largest brands and top logistics service providers, making it a critical link in industrial and consumer supply chains. The Region's location gives companies access to more of the U.S. population and employment base than any other major metro, providing unmatched accessibility.

Within a day's drive, you can reach 165 million people and 42,100 headquarters – that's 45% of the country's population and 48% of headquarter operations.



SR 161 IMPROVEMENTS

State Route 161 Improvements

Project Description

ODOT projects will make \$112 million of improvements to State Route 161 in eastern Franklin County and western Licking County.

- Widen SR 161 between Interstate 270 and U.S. Route 62
- Widen ramp from SR 161 west to I-270 north/west
- Improve the SR 161/Mink Rd. interchange to connect with improvements on local roads

Details on the timeline for these improvements are still under development. This project will include a public involvement process and an opportunity to provide public comment.

Timeline



Design Begins: March 2022

Construction Begins: July 2023

Complete: November 2024



Columbus Unemployment Rate



YoY Job Growth

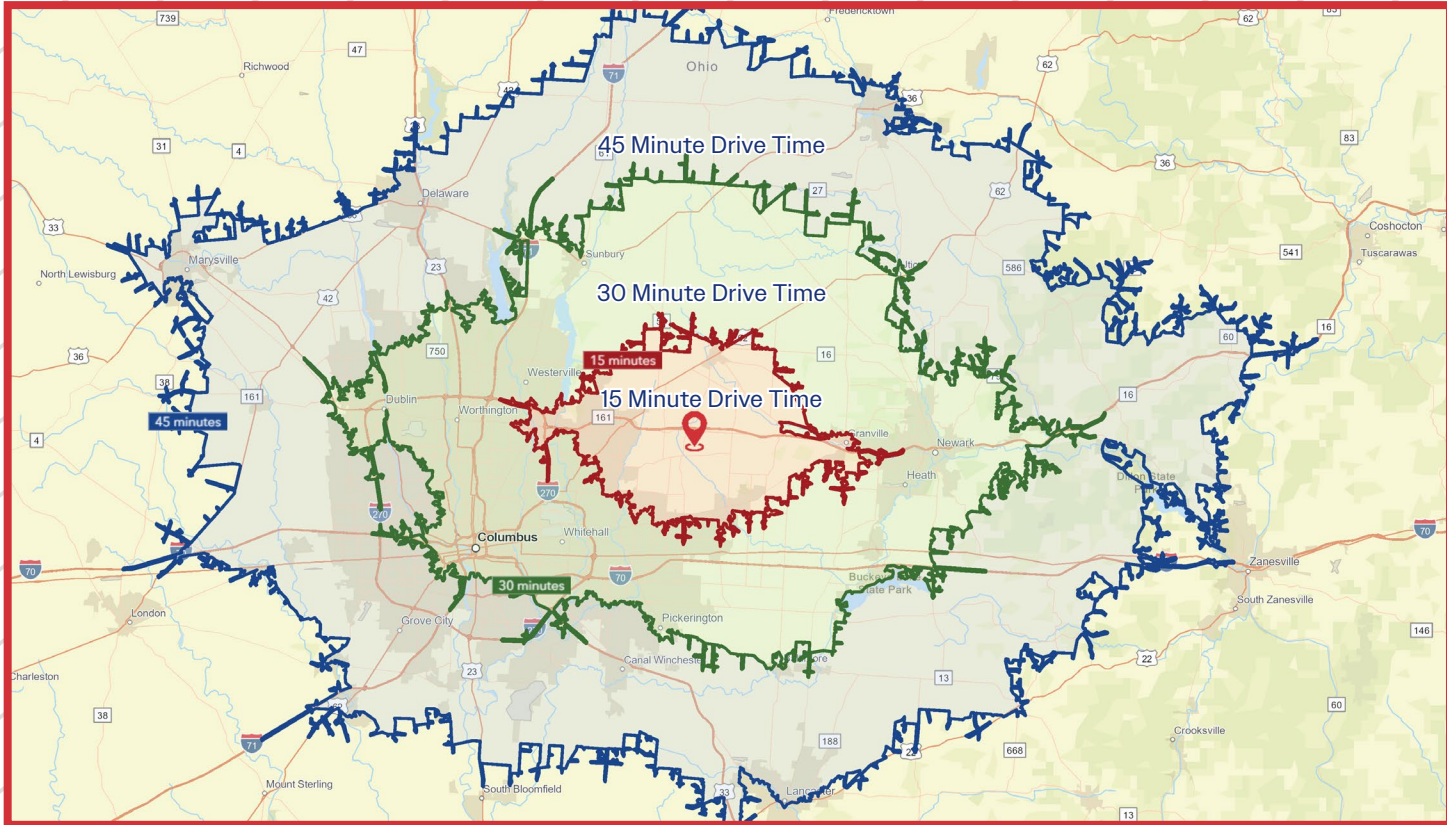


Population Growth



LABOR MAP

Within 30 Minutes, there are over 84,848 residents employed in either transportation, material moving or production occupations.



15 Minutes

Population: 136,450
Labor Force: 108,840

- Transportation/Material Moving: 4,630
- Production: 2,310

30 Minutes

Population: 1,237,539
Labor Force: 996,078

- Transportation/Material Moving: 53,513
- Production: 24,395

45 Minutes

Population: 2,014,240
Labor Force: 1,608,941

- Transportation/Material Moving: 88,415
- Production: 43,926

ABOUT LICKING COUNTY



Licking County

The perfect mix of small-town charm and big city benefits, Licking County offers a high quality of life and low cost of living with exemplary infrastructure, exciting amenities, top-notch schools, friendly neighbors and uncommon natural beauty.

Offering a comprehensive collection of resources, amenities, and incentives for new and growing businesses, Licking County boasts a strong infrastructure, diverse workforce, and highly accessible transportation.

Current Demographics

| | |
|-------------------------|----------|
| Residents | 185,447 |
| Median Age | 39.1 |
| Households | 71,429 |
| Median Household Income | \$82,779 |

Notable Employers



For More Information

NAIOhio Equities Industrial Property Team

MATT OSOWSKI, SIOR
mosowski@ohioequities.com
614 629 5229

CURT BERLIN, SIOR
cberlin@ohioequities.com
614 629 5221

BLAKE DECRANE, SIOR
bdecrane@ohioequities.com
614 629 5269