

PROMENADE

AT SOUTH MOUNTAIN | OFFICES FOR LEASE

8222 S 48th St, Phoenix, AZ 85044



Steve Berghoff, CCIM, SIOR
steve@menlocres.com
480-659-1777

Stuart Milne, CCIM, SIOR
stuart@menlocres.com
480-659-1777



FEATURES



+/- 110,187 SF

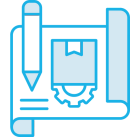


\$21.00 - \$24.00 PSF

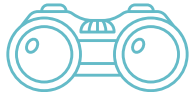
Full Service



**Recently renovated w/
wood & stone finishes**



**1,228 SF - 30,000 SF
Available**



**Beautiful golf course &
mountain views**



**Covered & reserved
parking**



**Private restrooms
throughout**

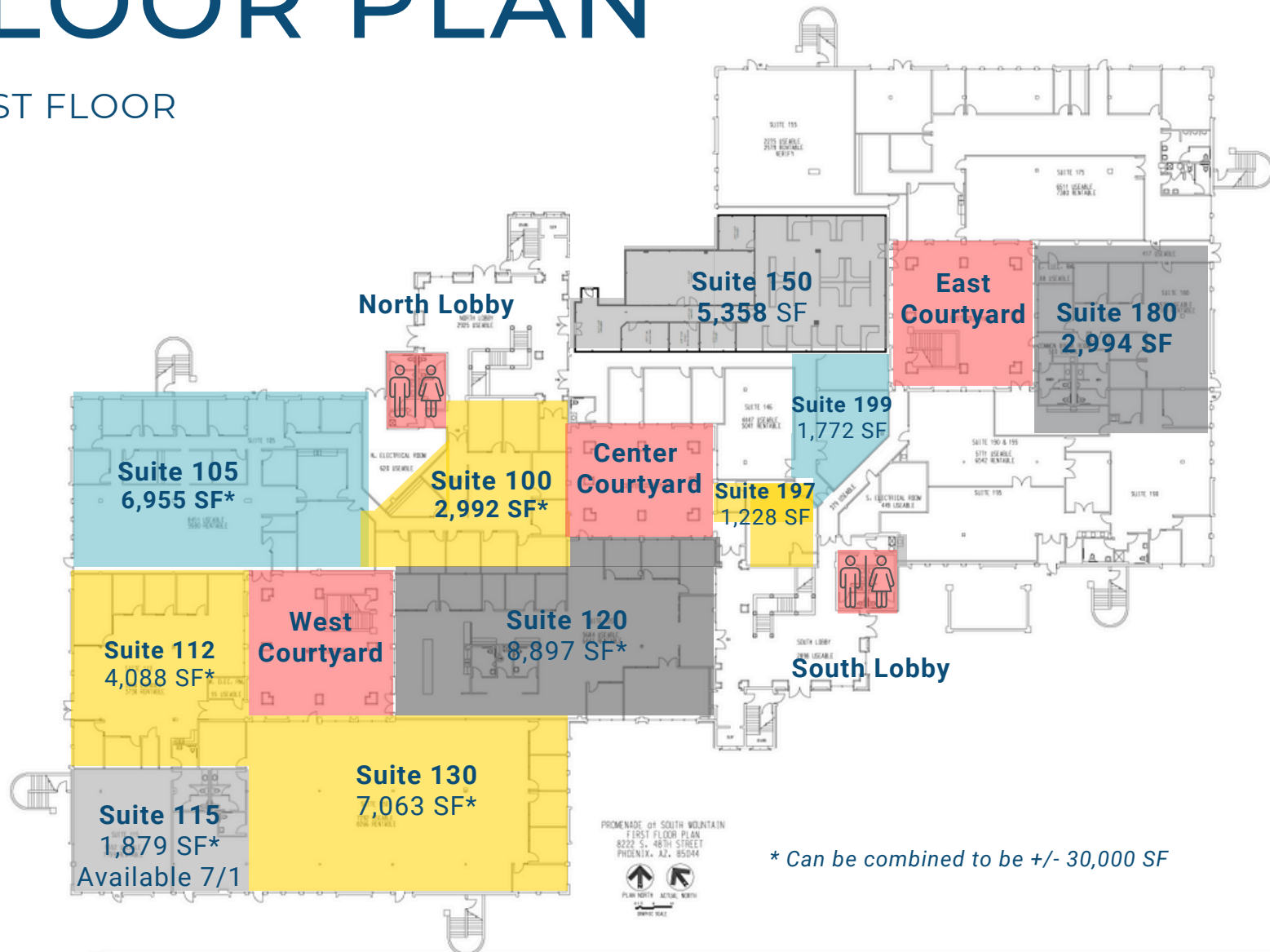


**Common-area courtyards
w/ bocce ball court**



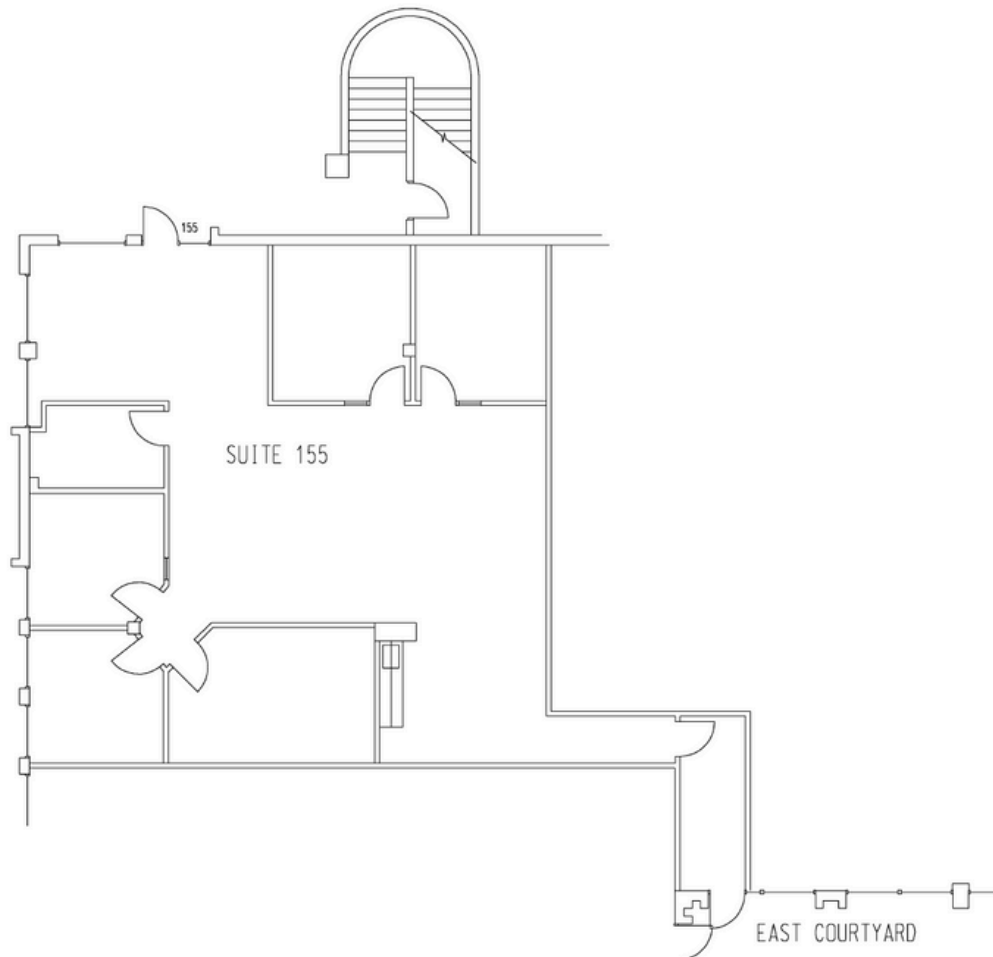
FLOOR PLAN

FIRST FLOOR



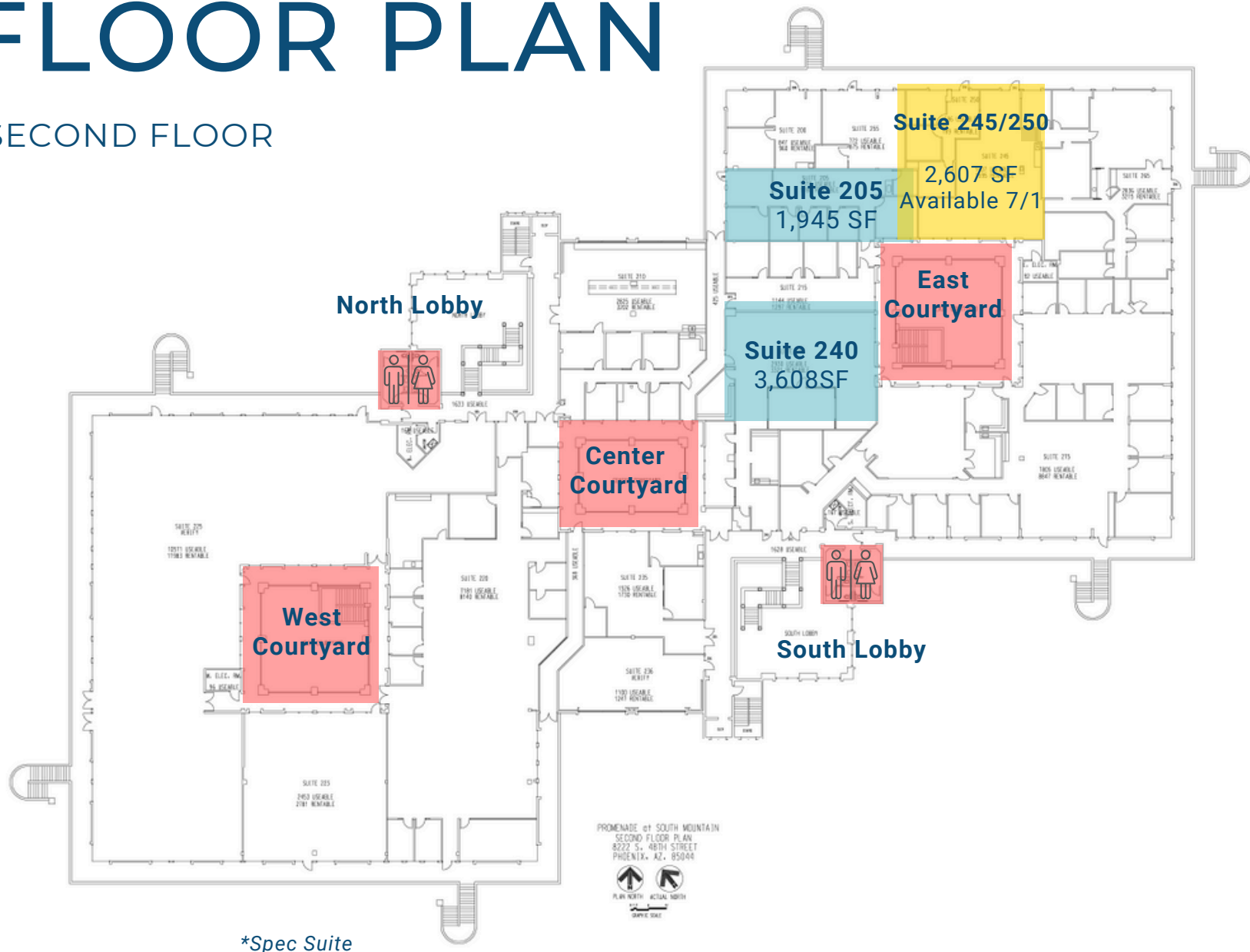
FLOOR PLAN

FIRST FLOOR - Suite 155



* Suite is approximately +/- 2,766 SF

SECOND FLOOR



PHOTOS



PHOTOS





**Arizona Grand
Resort & Spa**

**Arizona Grand
Golf Course**

**South Mountain
Park & Reserve**



Downtown
Phoenix

PHX
PHOENIX SKY HARBOR
INTERNATIONAL AIRPORT

ASU ARIZONA STATE
UNIVERSITY

ARIZONA MILLS
A SIMON CENTER

IKEA

South Mountain
Park & Reserve