



STRATEGICALLY POSITIONED, EXPERTLY MANAGED
BY MINNESOTA'S PREMIERE PAD GROUP

David Daly

Senior Vice President
+1 612 201 9398
david.daly@cbre.com

**0.79 ACRE PAD SITE
WEST ST. PAUL**

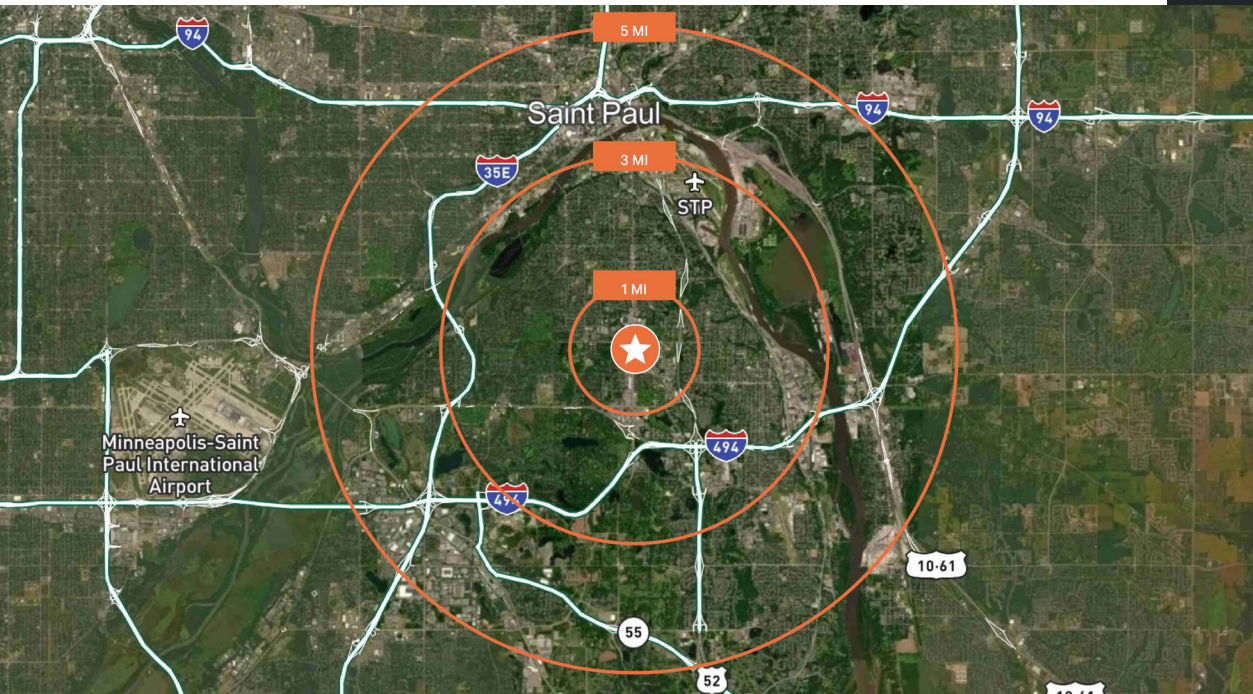
FOR SALE

CBRE

PROPERTY OVERVIEW

DEMOGRAPHICS

	1 Mile	3 Miles	5 Miles
Population	11,759	76,784	233,269
Daytime Population	14,765	73,446	286,037
Households	5,601	31,960	96,890
Average Household Income	\$77,922	\$108,350	\$109,015



Located in front of Walmart



Easy access off of S Robert St



0.79 acres



Flexible zoning, Miscellaneous Commercial



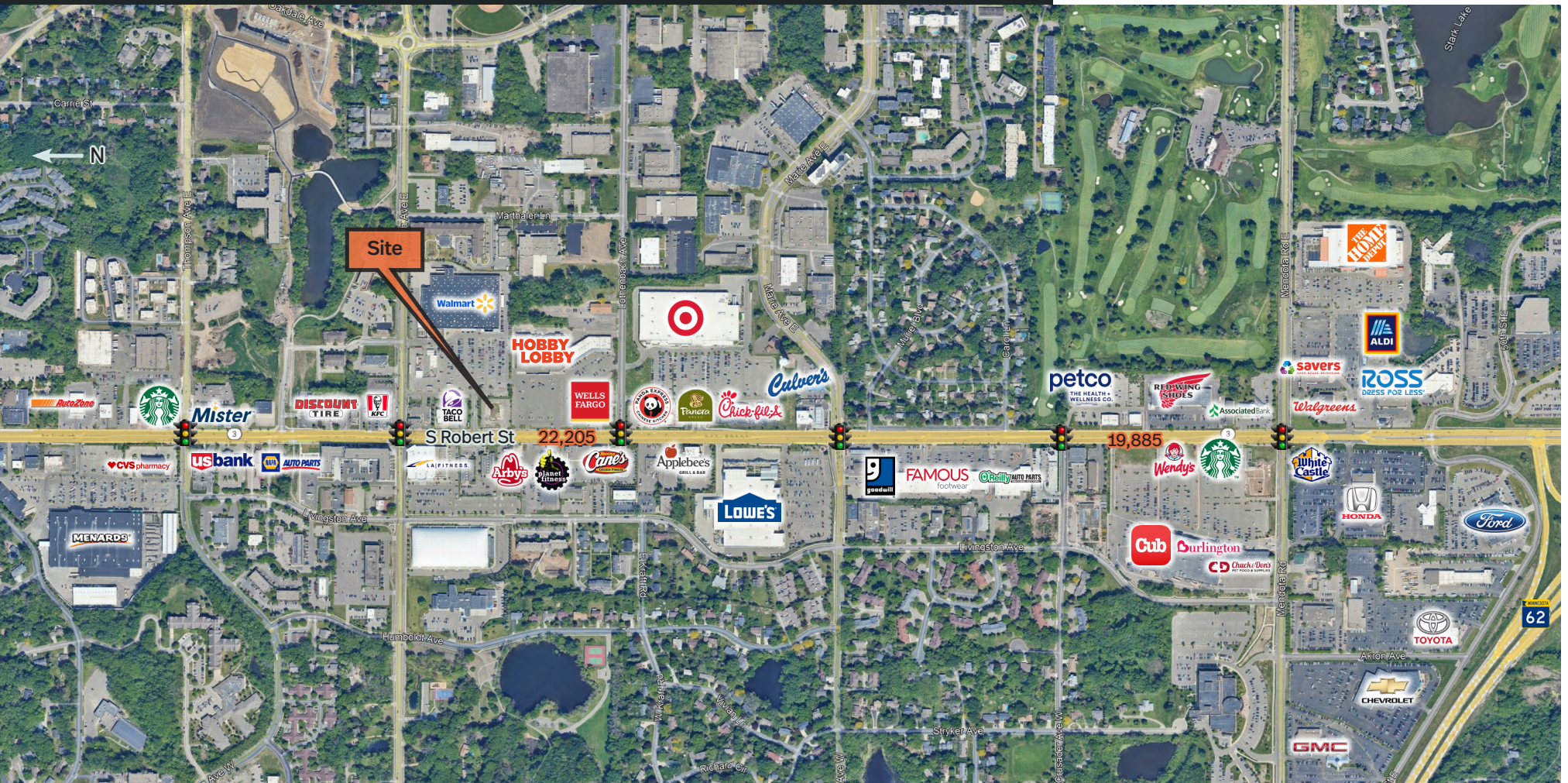
22,205 VPD on S Robert St



2025 Taxes - \$17,330

PRIME LOCATION

Located in the heart of West St. Paul, MN, 1650 S Robert St offers convenient access to major highways such as MN-52 and I-494, facilitating seamless connectivity to the metro and nearby areas. Residents and visitors alike benefit from a variety of nearby amenities, including shopping centers, dining options, and recreational parks, ensuring that everything needed for daily living is just a short drive away.



TRUSTED EXPERTISE: PREMIERE PAD GROUP



The Premiere Pad Group has consistently demonstrated unparalleled success in managing retail pad and outlot listings, setting the standard for excellence in the industry. With years of combined expertise and a deep understanding of the market, we pride ourselves on our ability to navigate complex transactions and deliver results for our clients in a multitude of circumstances.



MATT FRIDAY



DAVID DALY

CURRENTLY AVAILABLE

0.98 Acres - 5910 Neal Ave, Oak Park Heights

1.17 Acres - NEQ Cedar Ave & 179th St W, Lakeville

2.49 Acres - NEQ Cedar Ave & 179th St W, Lakeville

1.40 Acres - 720 US 10 S, St. Cloud

1.47 Acres - 4788 Maine Ave SE, Rochester

RECENT SALES

1.35 Acres - 16345 Terrey Pine Dr, Eden Prairie

1.55 Acres - 10000 Rockford Rd, Plymouth

0.59 Acres - 3342 Nicollet Ave, Minneapolis

2.51 Acres - 11578 207th St W, Lakeville

1.3 Acres - 2030 Twin Lakes Pkwy, Roseville

5.33 Acres - 4250 Haines Rd, Hermantown

1.25 Acres - 3751 Lexington Ave, Arden Hills

1.07 Acres - 3465 124th Ave NW, Coon Rapids



DAVID DALY

Senior Vice President

+1 612 201 9398

david.daly@cbre.com

0.79 ACRE PAD SITE WEST ST. PAUL

FOR SALE

CBRE

© 2025 CBRE, Inc. All rights reserved. This information has been obtained from sources believed reliable but has not been verified for accuracy or completeness. CBRE, Inc. makes no guarantee, representation or warranty and accepts no responsibility or liability as to the accuracy, completeness, or reliability of the information contained herein. You should conduct a careful, independent investigation of the property and verify all information. Any reliance on this information is solely at your own risk. CBRE and the CBRE logo are service marks of CBRE, Inc. All other marks displayed on this document are the property of their respective owners, and the use of such marks does not imply any affiliation with or endorsement of CBRE. Photos herein are the property of their respective owners. Use of these images without the express written consent of the owner is prohibited.