

Chicago, IL 60628

10628 S Halsted St



OFFERING SUMMARY

Available SF:	900 SF
Lease Rate:	\$16.50 SF/yr (NNN)
Lot Size:	0.4 Acres
Building Size:	9,260
Market:	Chicago MSA
Submarket:	Southside

PROPERTY OVERVIEW

900sf available in this +/-9200sf retail center. Recently renovated modern facade. The site is located in Chicago's Morgan Park Community. The area is densely populated. Traffic Counts along Halsted are approximately 18,800 VPD and approximately 4,700 VPD along 107th St.

PROPERTY HIGHLIGHTS

- Prime location in Chicago, IL
- Spacious interior with open layout
- Ample parking space available
- High visibility and foot traffic
- Versatile space for various business types
- Excellent signage and branding opportunities
- Easy access to major transportation routes

for more information

Neil Haleem

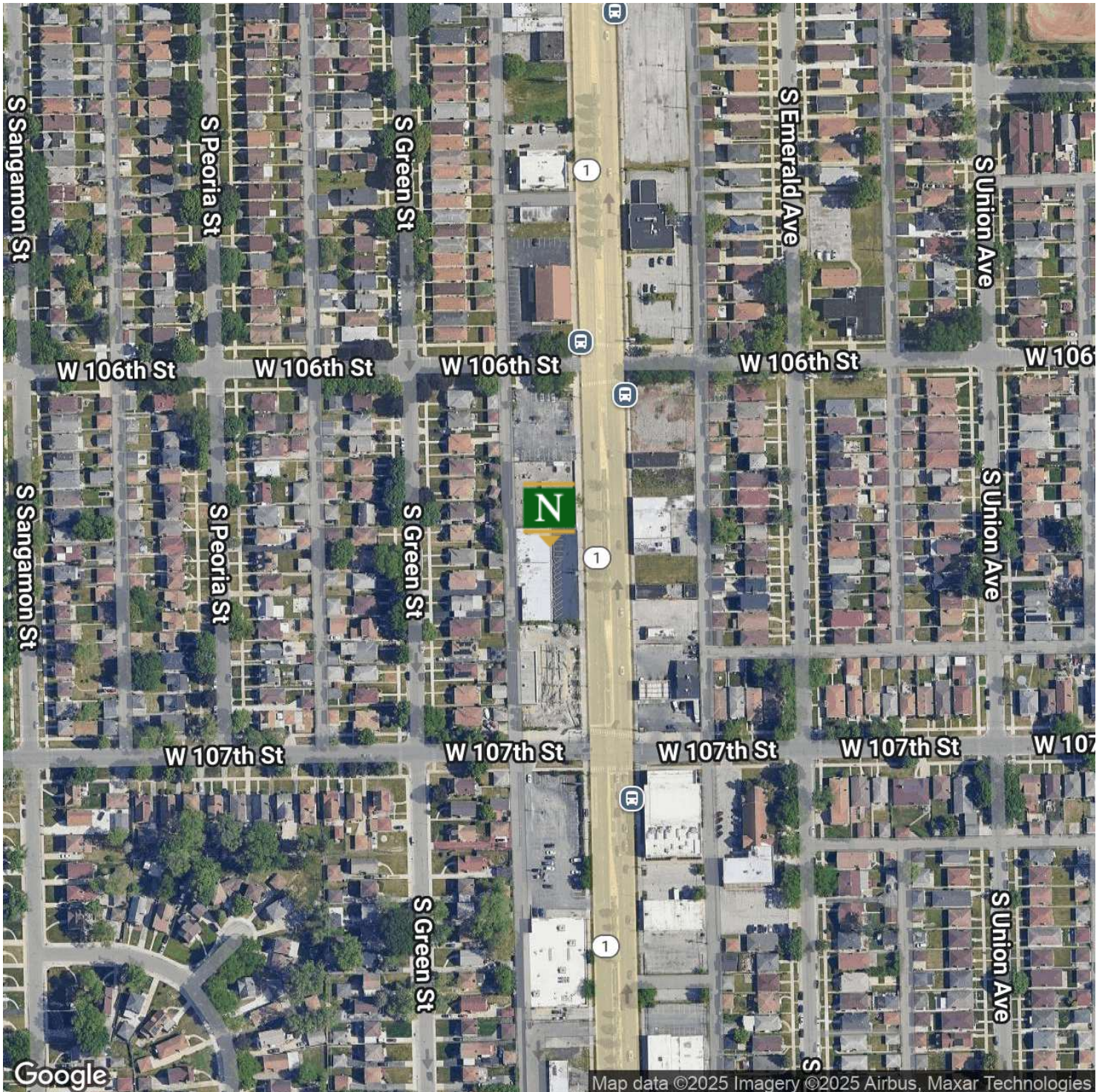
708.873.5540

neil@networkregroup.com



Chicago, IL 60628

10628 S Halsted St

*for more information***Neil Haleem**

708.873.5540

neil@networkregroup.com



Chicago, IL 60628

10628 S Halsted St



for more information

Neil Haleem

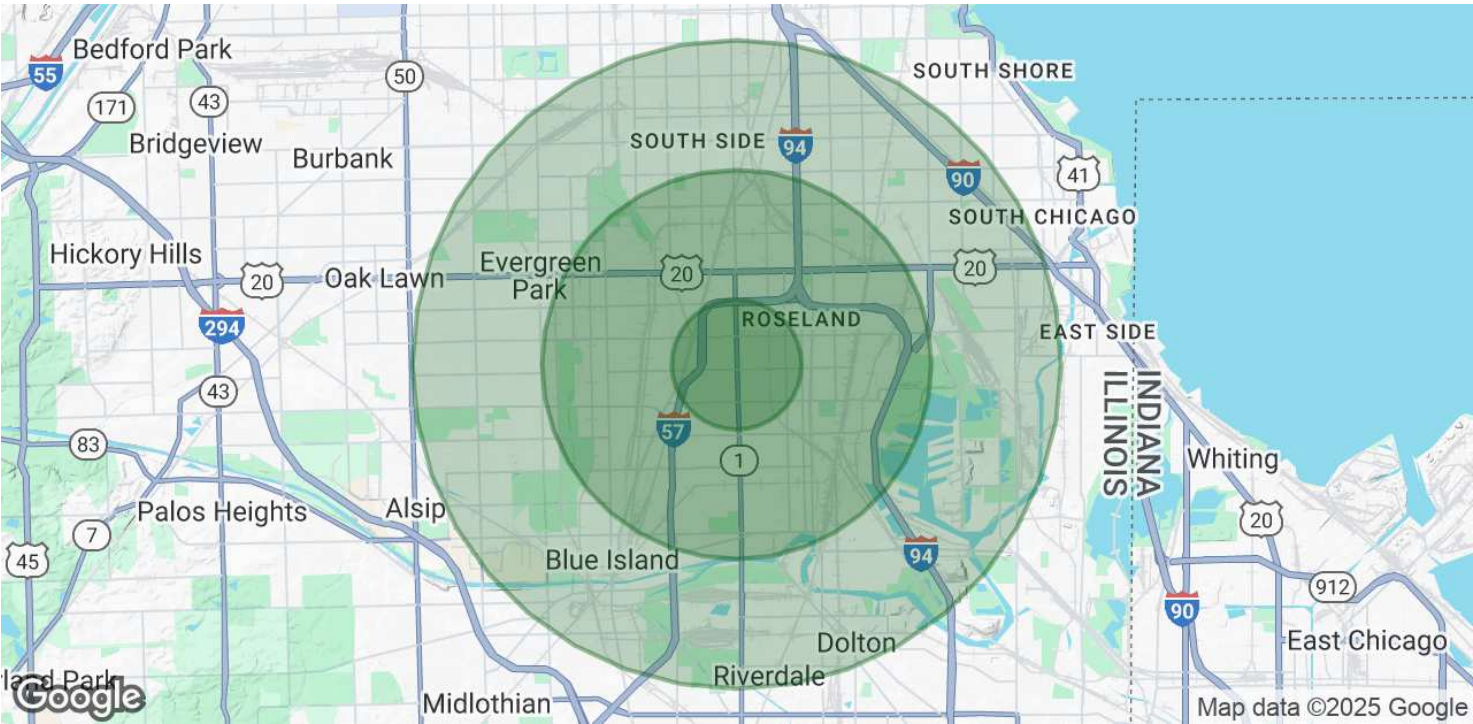
708.873.5540

neil@networkregroup.com



Chicago, IL 60628

10628 S Halsted St



POPULATION	1 MILE	3 MILES	5 MILES
Total Population	21,777	167,349	415,969
Average Age	43	42	42
Average Age (Male)	41	40	40
Average Age (Female)	45	44	43

HOUSEHOLDS & INCOME	1 MILE	3 MILES	5 MILES
Total Households	8,039	65,572	166,658
# of Persons per HH	2.7	2.6	2.5
Average HH Income	\$74,347	\$85,720	\$79,850
Average House Value	\$199,371	\$236,997	\$231,919

Demographics data derived from AlphaMap

for more information

Neil Haleem

708.873.5540

neil@networkregroup.com

