



207
S BROADWAY
Los Angeles, CA 90012

FOR LEASE

Rare full floor
opportunities



ANTHONYSTECKTEAM.COM
KIDDER.COM

 **Kidder
Mathews**

BUILDING — HIGHLIGHTS



FROM

±5,700 SF to 16,280 SF of
contiguous space



SIGNAGE

Available



AMPLE ON-SITE

Parking for tenants and visitors



FIBER

Connectivity available



LOW

Load factor



38.5K

Total SF Available

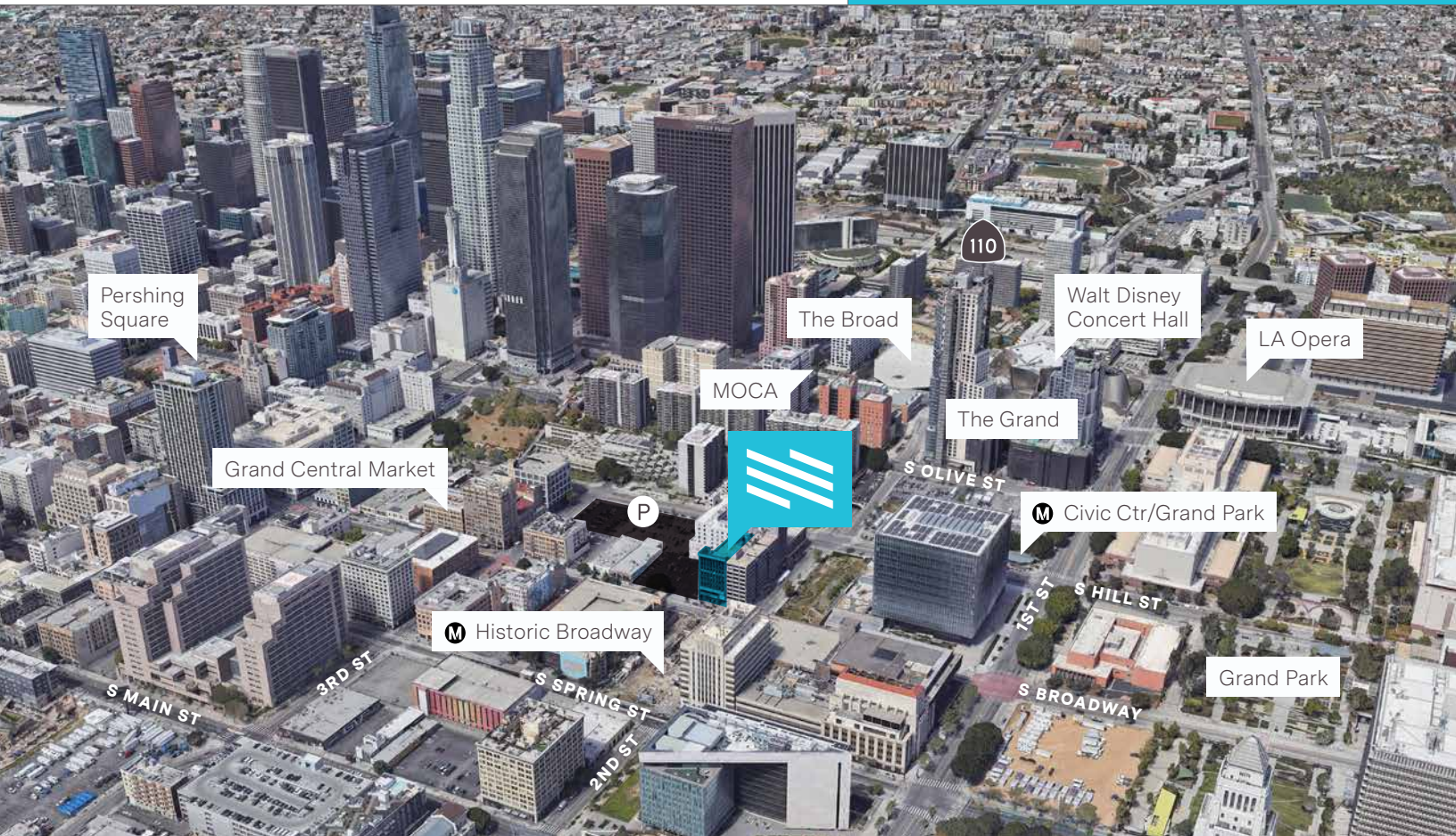
WELCOME TO THE — NEIGHBORHOOD

ACROSS

the street from the brand new Historic Broadway Metro Rail station

NEARBY

amenities include Grand Central Market, Colburn Campus (under construction), and Grand Ave Project

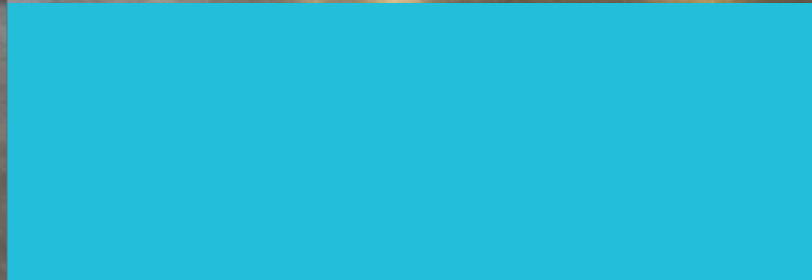
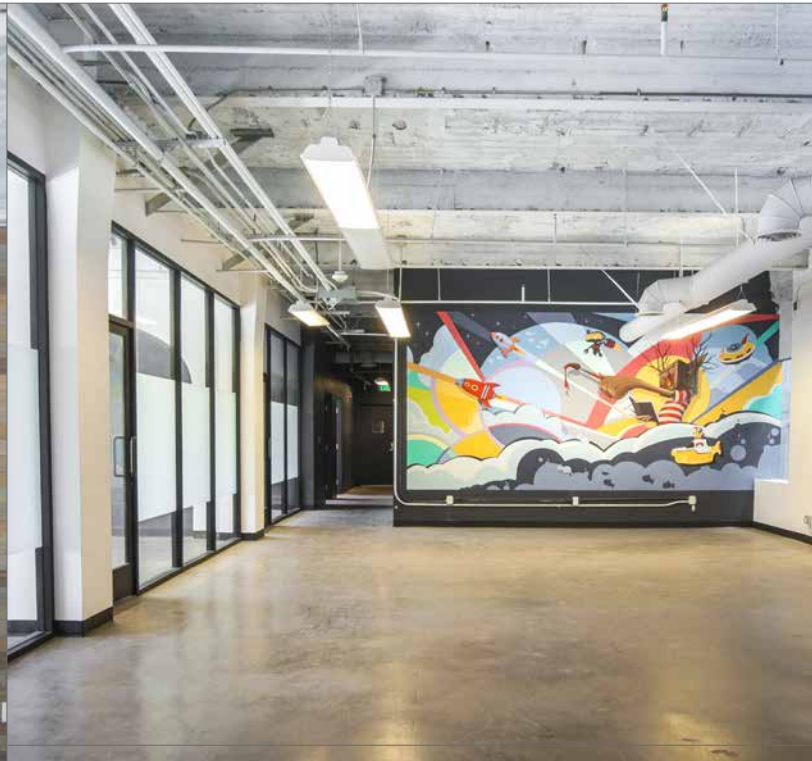


NEIGHBORING —EMPLOYERS



SPACE — AVAILABILITY

SUITE	USE	TYPE	RATE	SF AVAILABLE
One	Office	Direct	Negotiable	5,700
200	Office	Direct	Negotiable	8,400
300	Office	Direct	Negotiable	8,140
400	Office	Direct	Negotiable	8,140
500	Office	Direct	Negotiable	8,140



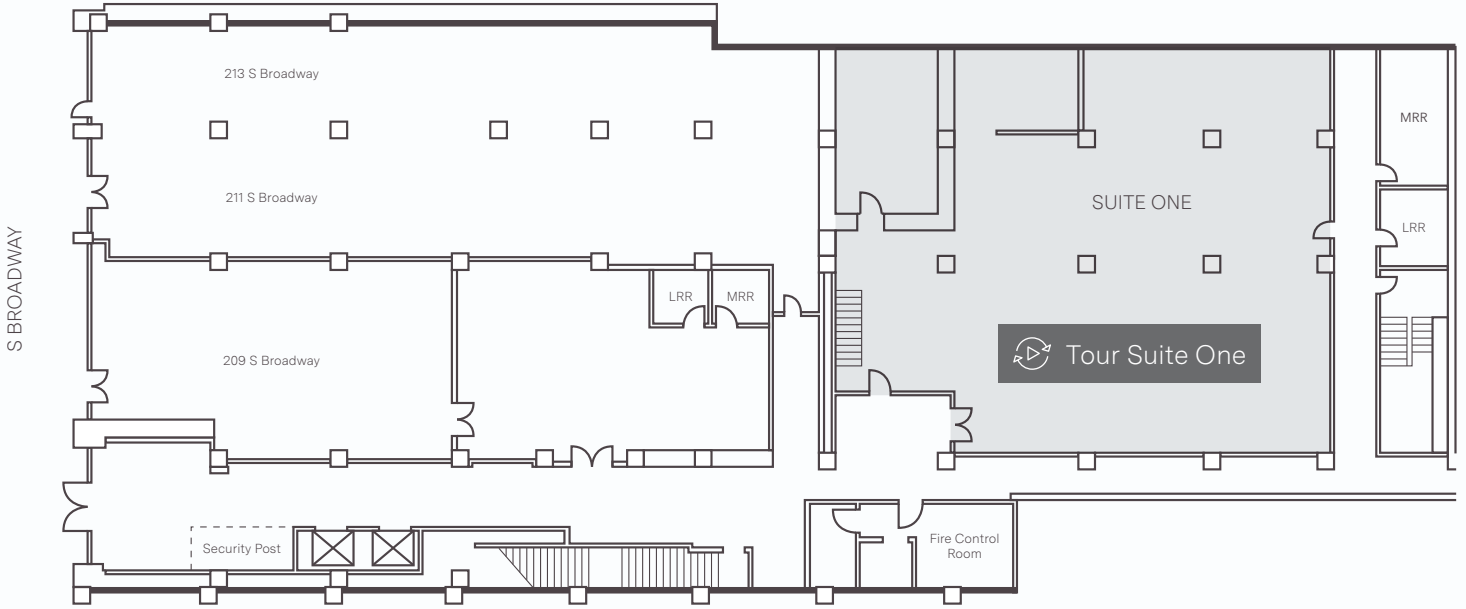
 207
S BROADWAY



STUNNING
CREATIVE
OFFICE SPACE
WITH 14'-16'
CEILINGS
& POTENTIAL
PRIVATE
OUTDOOR PATIO



PARKING LOT (215 S BROADWAY)



TYPE Direct

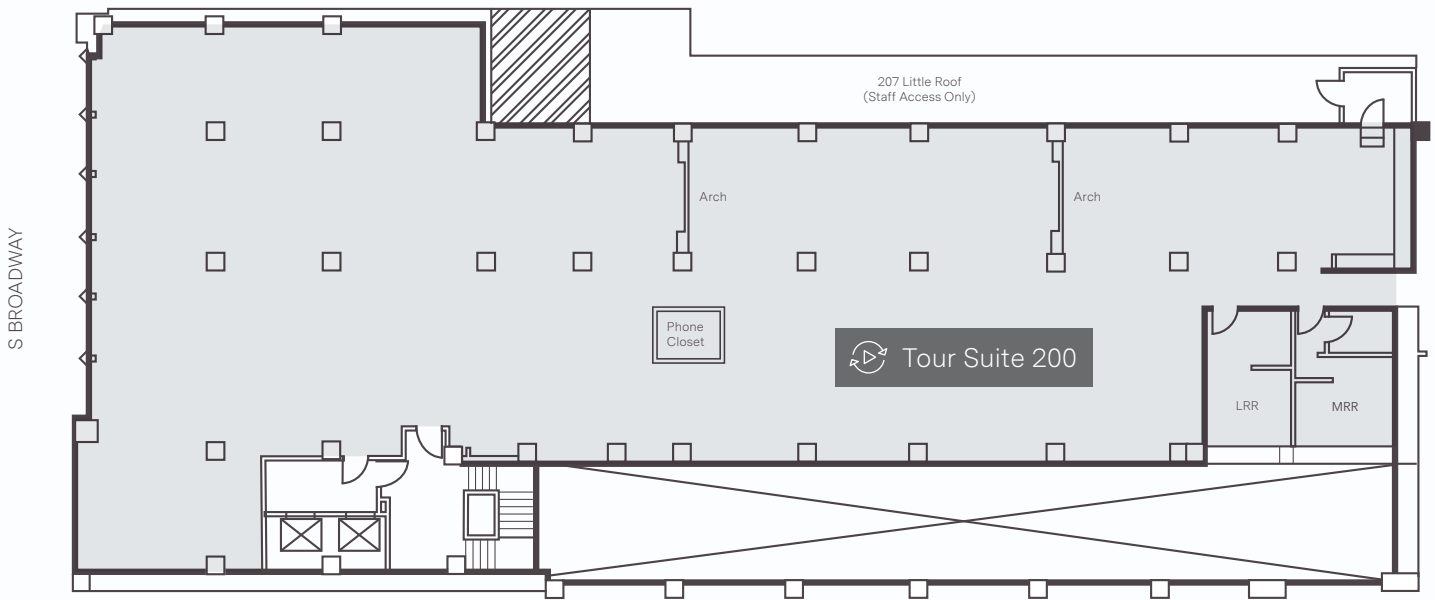
RATE Negotiable

SF AVAILABLE 5,700

SUITE

ONE

PARKING LOT (215 S BROADWAY)



TYPE

Direct

RATE

Negotiable

SF AVAILABLE

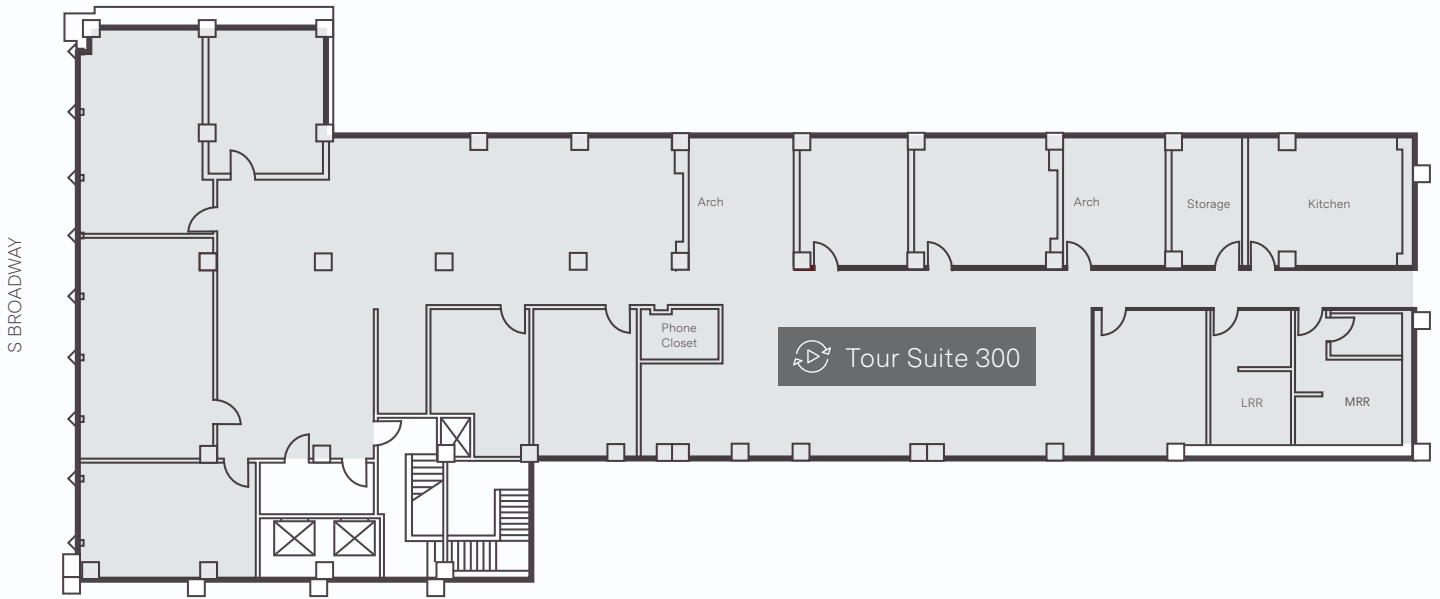
8,400

SUITE

200



PARKING LOT (215 S BROADWAY)



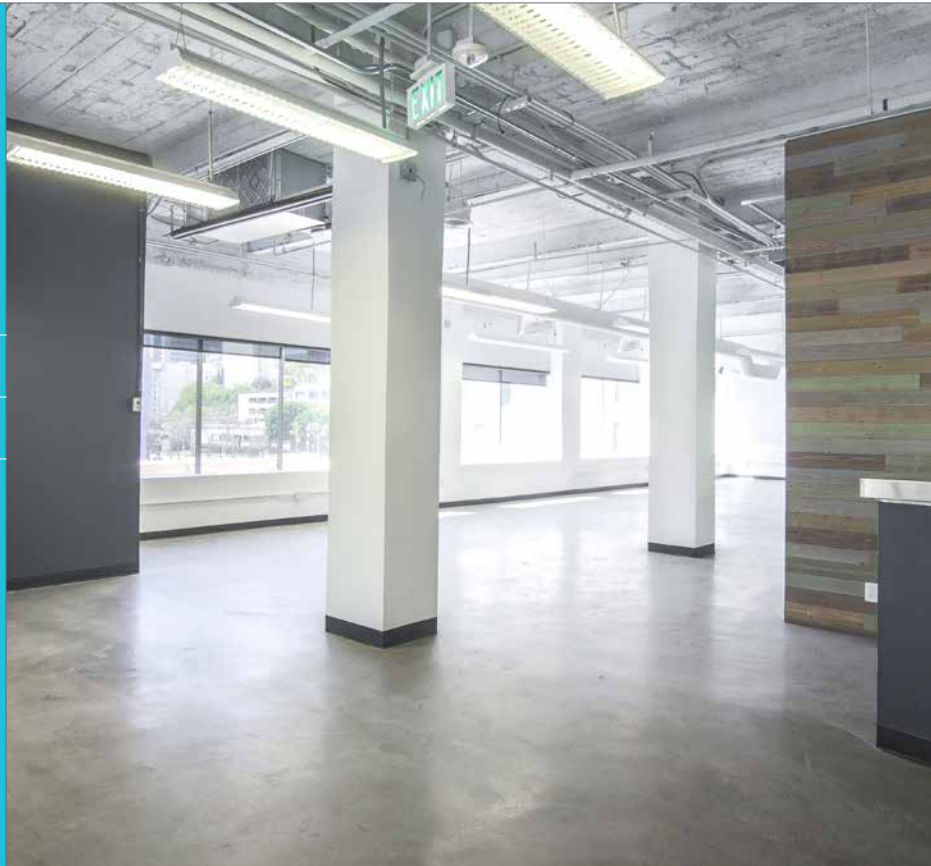
TYPE Direct

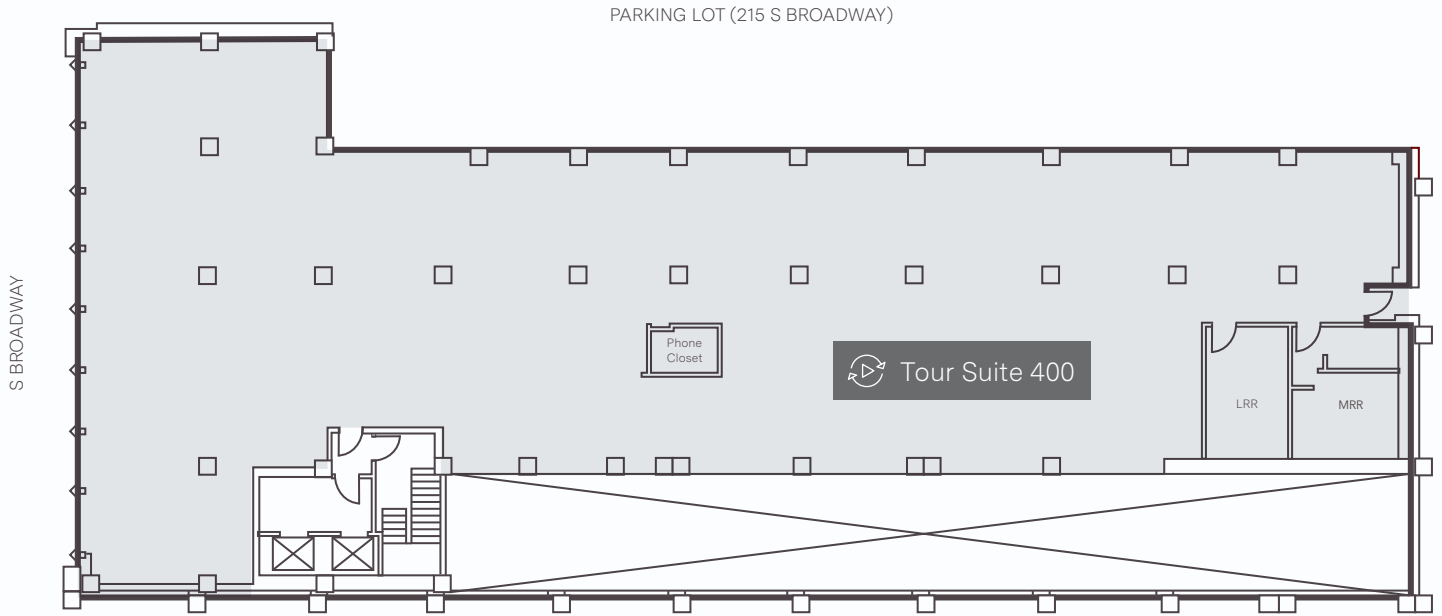
RATE Negotiable

SF AVAILABLE 8,140

SUITE

300





TYPE Direct

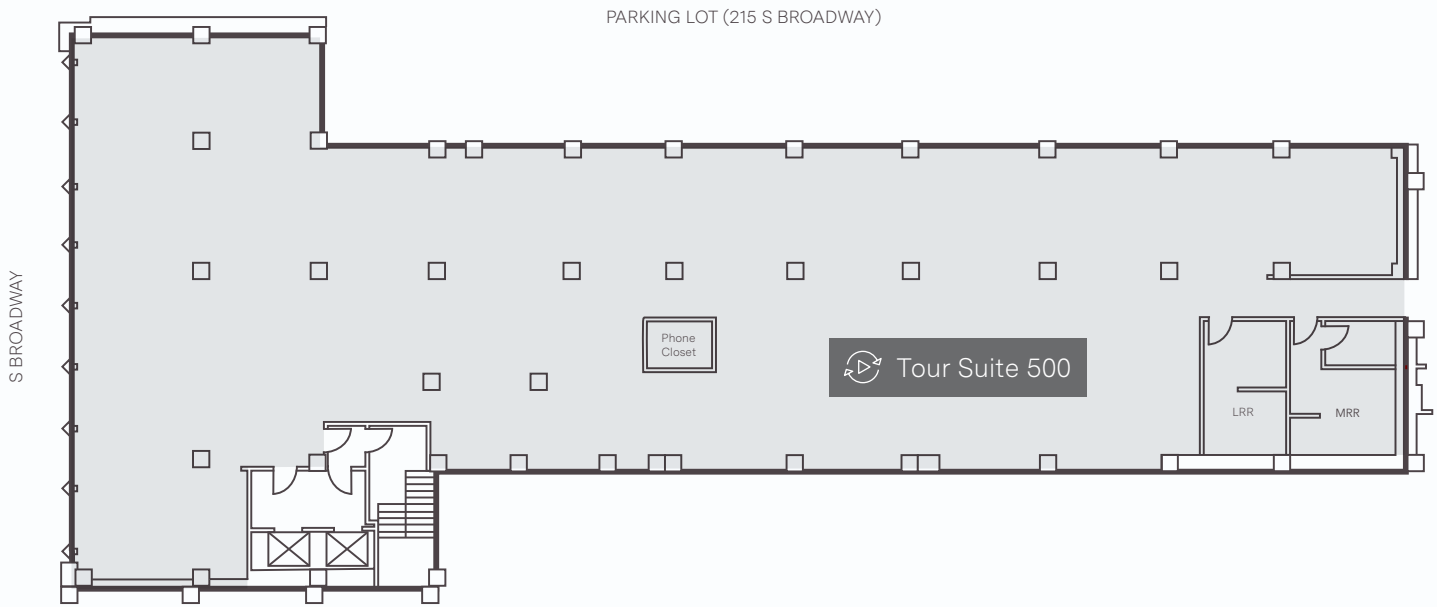
RATE Negotiable

SF AVAILABLE 8,140

SUITE

400





TYPE Direct

RATE Negotiable

SF AVAILABLE 8,140

SUITE

500





207

SOUTH —
BROADWAY

JOHN ANTHONY, SIOR
213.225.7218
john.anthony@kidder.com
LIC N° 01226464

CHRISTOPHER STECK, CCIM
213.225.7231
christopher.steck@kidder.com
LIC N° 01841338

anthonysteckteam.com | kidder.com

This information supplied herein is from sources we deem reliable. It is provided without any representation, warranty, or guarantee, expressed or implied as to its accuracy. Prospective Buyer or Tenant should conduct an independent investigation and verification of all matters deemed to be material, including, but not limited to, statements of income and expenses. Consult your attorney, accountant, or other professional advisor.

