

47850 - 47988 WEST ROAD
WIXOM, MICHIGAN

INDUSTRIAL FOR LEASE
2,106 – 3,891 Square Feet Available



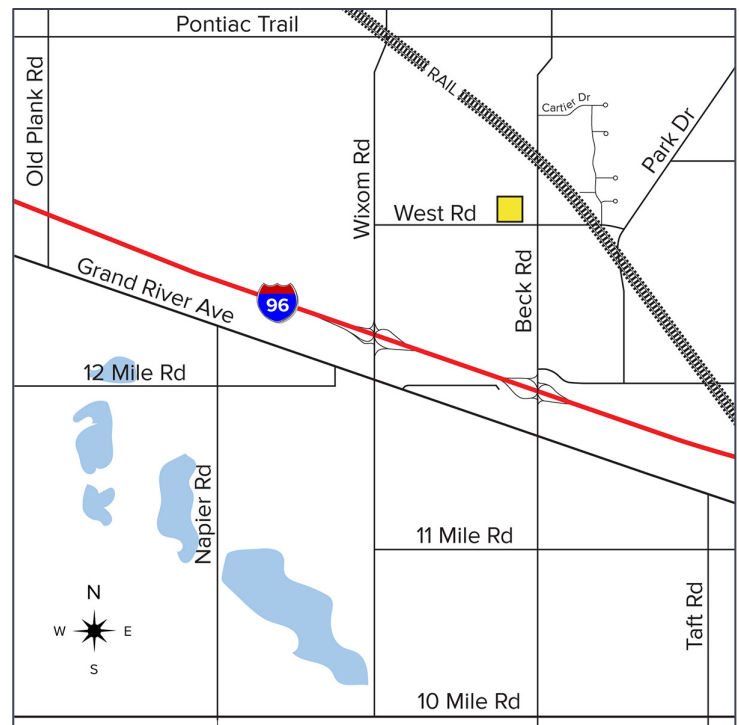
**SIGNATURE
ASSOCIATES**
KNOW SIGNATURE | KNOW RESULTS

WEST BECK BUSINESS PARK



PROPERTY FEATURES

- 2,106 – 3,891 square feet available
- 14' clear height
- (1) grade level door per unit
- (2) shared truckwells
- Zoned Industrial, I1
- Well maintained multi-tenant complex
- Easy access to I-96
- Lease Rate: \$9.25/sq. ft. Gross



For more information, please contact:

CHRISTOPHER M. D'ANGELO
(248) 948 0109
cdangelo@signatureassociates.com

JIM MONTGOMERY
(248) 359 0614
jmontgomery@signatureassociates.com

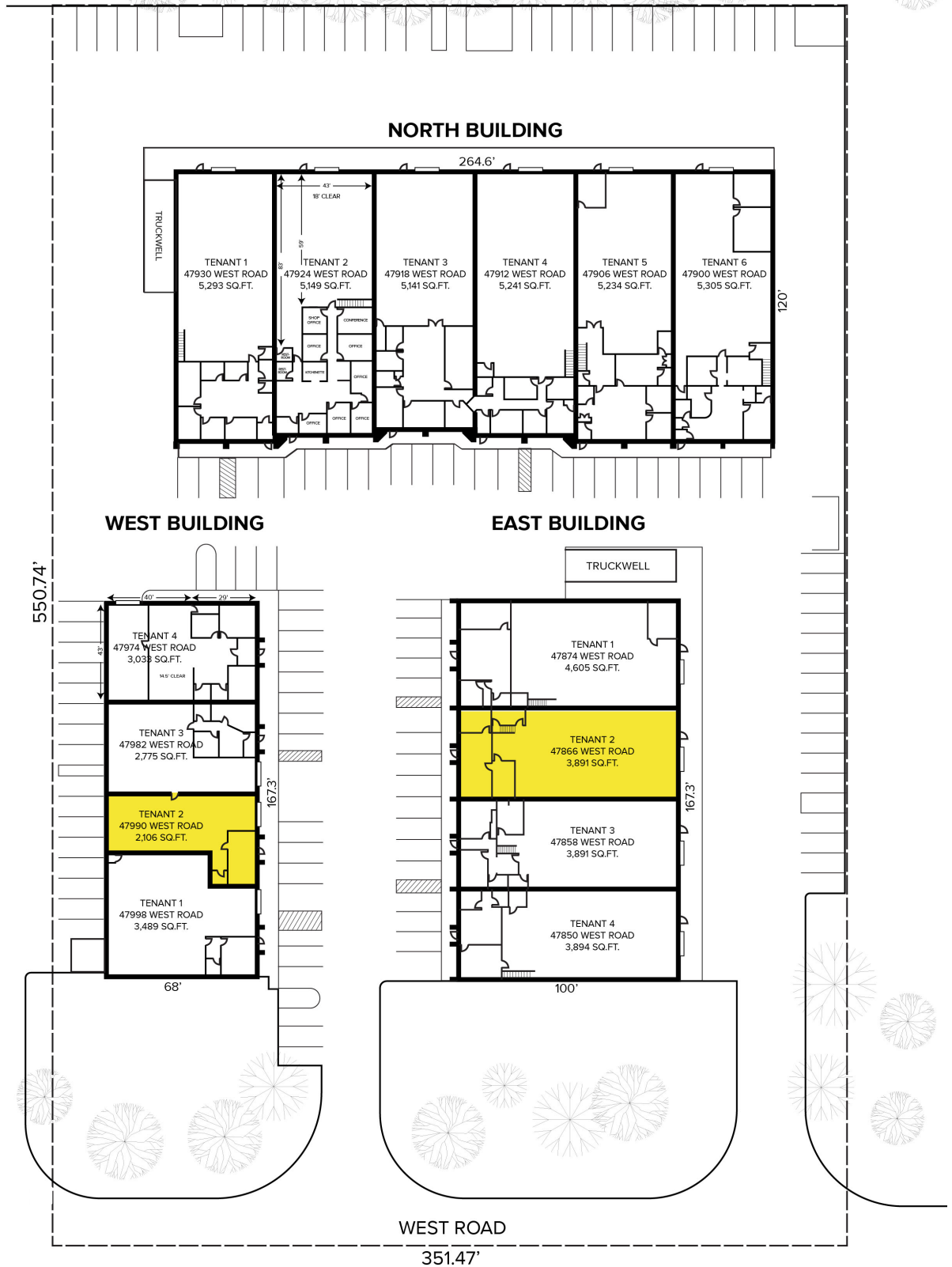
SIGNATURE ASSOCIATES
One Towne Square, Suite 1200
Southfield, MI 48076
www.signatureassociates.com

47850 - 47988 West Road - Wixom, Michigan

Industrial For Lease

2,106 – 3,891
Square Feet
AVAILABLE

Site Plan



For more information, please contact:

CHRISTOPHER M. D'ANGELO
(248) 948 0109
cdangelo@signatureassociates.com

JIM MONTGOMERY
(248) 359 0614
jmontgomery@signatureassociates.com

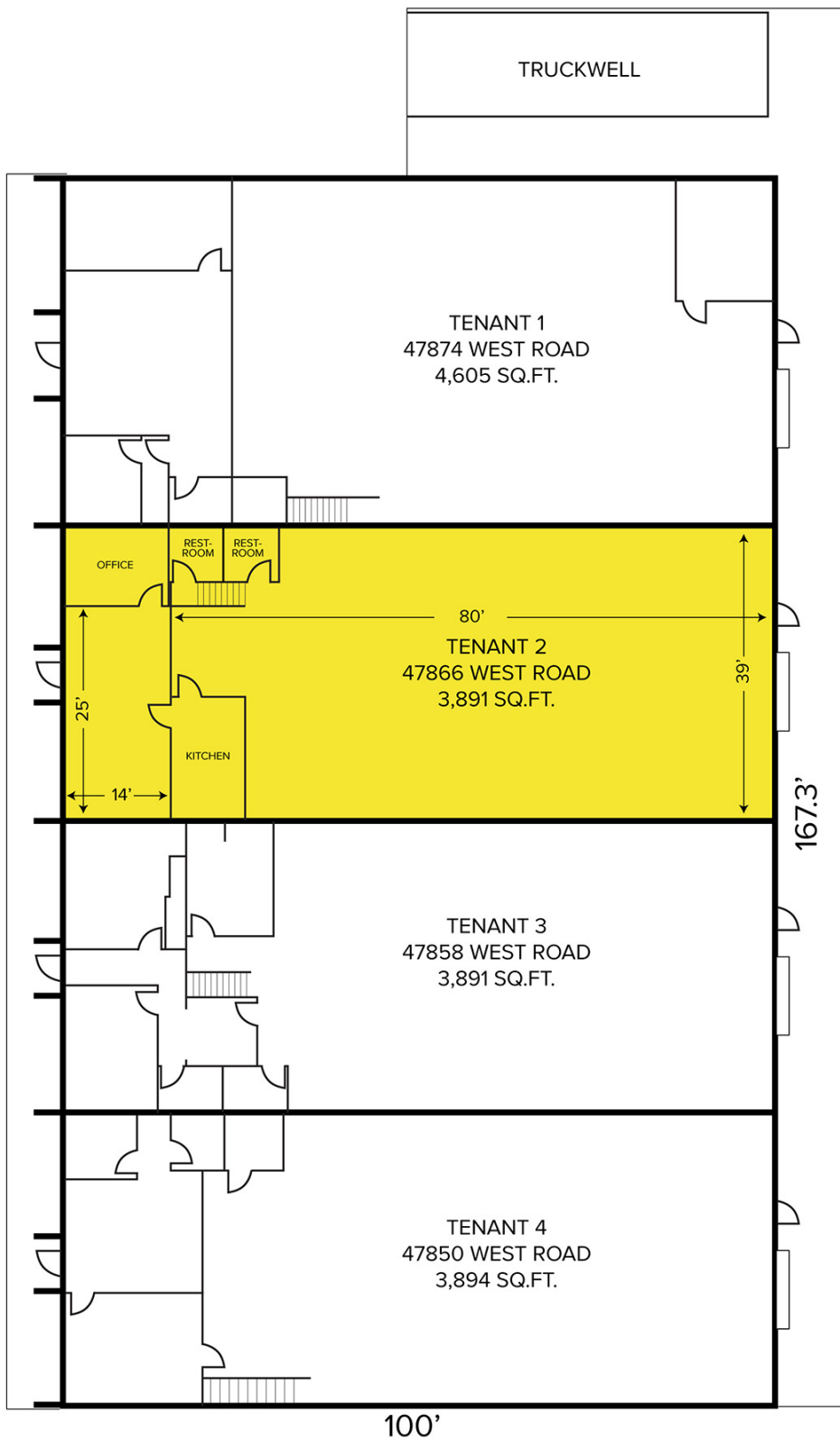
SIGNATURE ASSOCIATES
One Towne Square, Suite 1200
Southfield, MI 48076
www.signatureassociates.com

47850 - 47988 West Road - Wixom, Michigan

Industrial For Lease

2,106 – 3,891
Square Feet
AVAILABLE

Floor Plan Unit 47866



For more information, please contact:

CHRISTOPHER M. D'ANGELO
(248) 948 0109
cdangelo@signatureassociates.com

JIM MONTGOMERY
(248) 359 0614
jmontgomery@signatureassociates.com

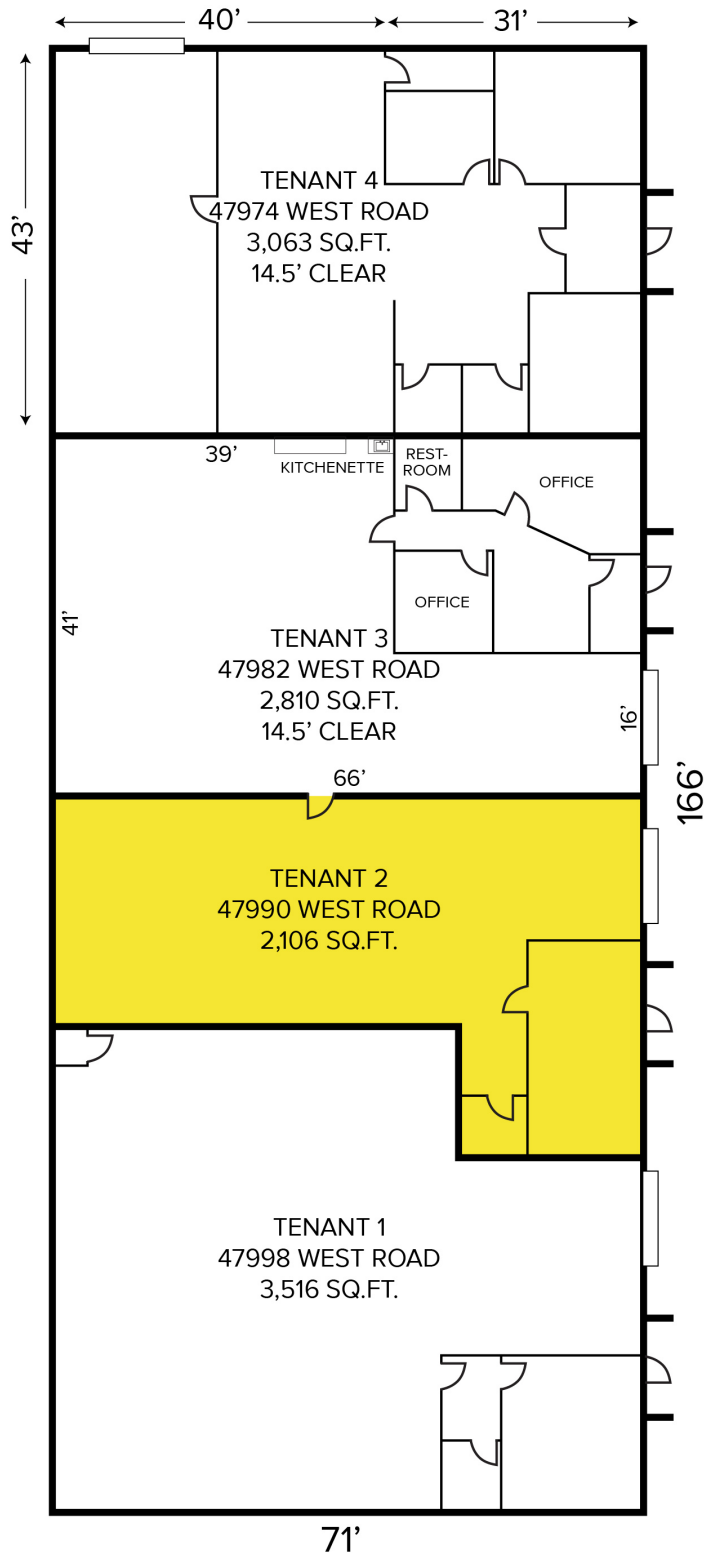
SIGNATURE ASSOCIATES
One Towne Square, Suite 1200
Southfield, MI 48076
www.signatureassociates.com

47850 - 47988 West Road - Wixom, Michigan

Industrial For Lease

2,106 – 3,891
Square Feet
AVAILABLE

Floor Plan Unit 47990



For more information, please contact:

CHRISTOPHER M. D'ANGELO
(248) 948 0109
cdangelo@signatureassociates.com

JIM MONTGOMERY
(248) 359 0614
jmontgomery@signatureassociates.com

SIGNATURE ASSOCIATES
One Towne Square, Suite 1200
Southfield, MI 48076
www.signatureassociates.com

47850 - 47988 West Road - Wixom, Michigan

Industrial For Lease

2,106 – 3,891
Square Feet
AVAILABLE

Aerial



For more information, please contact:

CHRISTOPHER M. D'ANGELO
(248) 948 0109
cdangelo@signatureassociates.com

JIM MONTGOMERY
(248) 359 0614
jmontgomery@signatureassociates.com

SIGNATURE ASSOCIATES
One Towne Square, Suite 1200
Southfield, MI 48076
www.signatureassociates.com