

For Lease

Queen's Court - 625 Agnes Street

New Westminster, BC



Nicolas Bilodeau, Senior Vice President
604 647 1336
nicolas.bilodeau@avisonyoung.com

Josh Sookero*, Principal
604 647 5091
josh.sookero@avisonyoung.com
*Josh Sookero Personal Real Estate Corporation

**AVISON
YOUNG**

Queen's Court

625 Agnes Street
New Westminster, BC

Building details

YEAR BUILT
1981

BUILDING AREA
82,042 sf

FLOORS
Five (5)

AVERAGE FLOOR PLATE
20,000 sf

SECURITY
24/7 card access

BUILDING OPERATING HOURS
8:00 am - 6:00 pm, Mon-Fri

STORAGE
Secure storage available

Property details

LEASE RATE
Contact listing agents

OPERATING COSTS
\$14.45 psf (2025)

PARKING
1 stall per 885 sf leased at
\$110 per month per stall
plus applicable taxes



Location

Queen's Court is located in the downtown district of New Westminster at the northeast corner of Agnes and 7th Streets. This five-storey, 85,000 sf premier class B office building is adjacent to Douglas College and across from the New Westminster Law Courts.

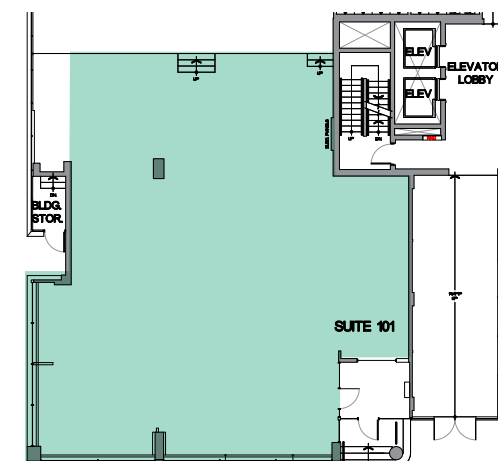
Queen's Court provides excellent access to all major arterial roads and offers staff and clients proximity to two SkyTrain stations. The building also offers an abundance of amenities nearby including Starbucks, the Old Spaghetti Factory, numerous financial institutions, hotels, City Hall and Westminster Quay Public Market.

Building features

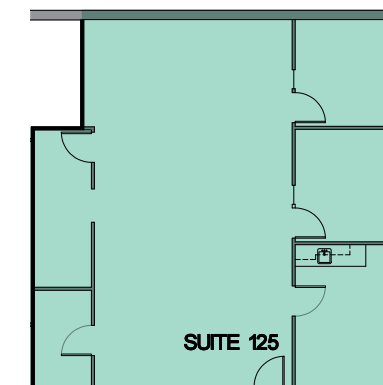
- Premier class B office building
- Steps to Downtown New Westminster
- Five-minute walk to both Westminster and Columbia SkyTrain stations
- Close to Starbucks and ample restaurants
- Excellent improvements in place



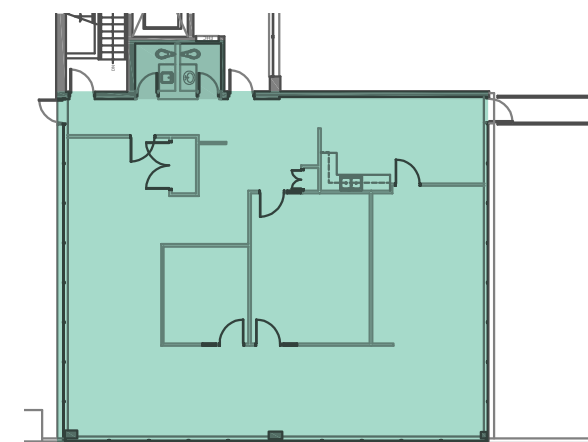
Floor plans



SUITE 101
Rentable area (sf): 3,800
Availability: Immediate
Improvements: Open plan with new ceiling and LED lighting

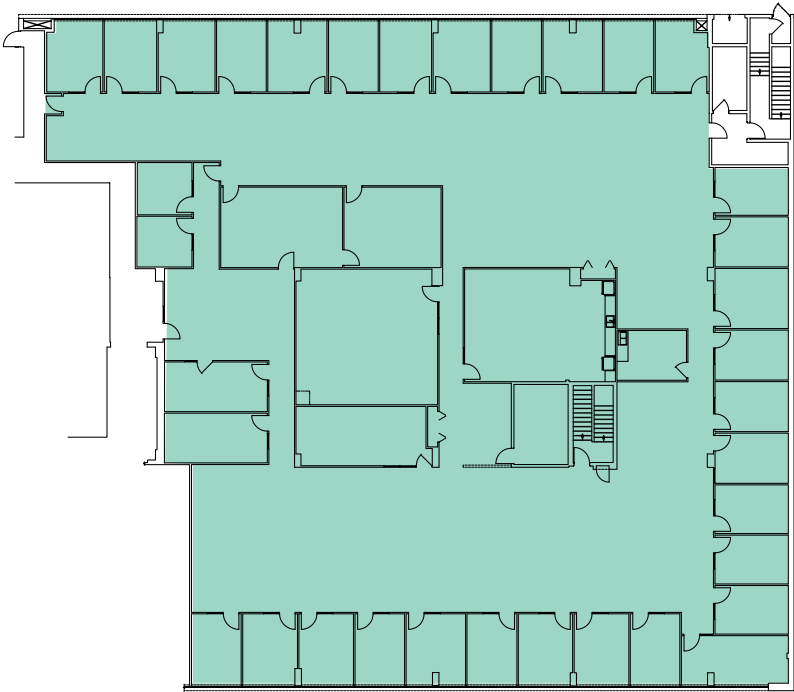


SUITE 125
Rentable area (sf): 1,431
Availability: Immediate
Improvements: 1

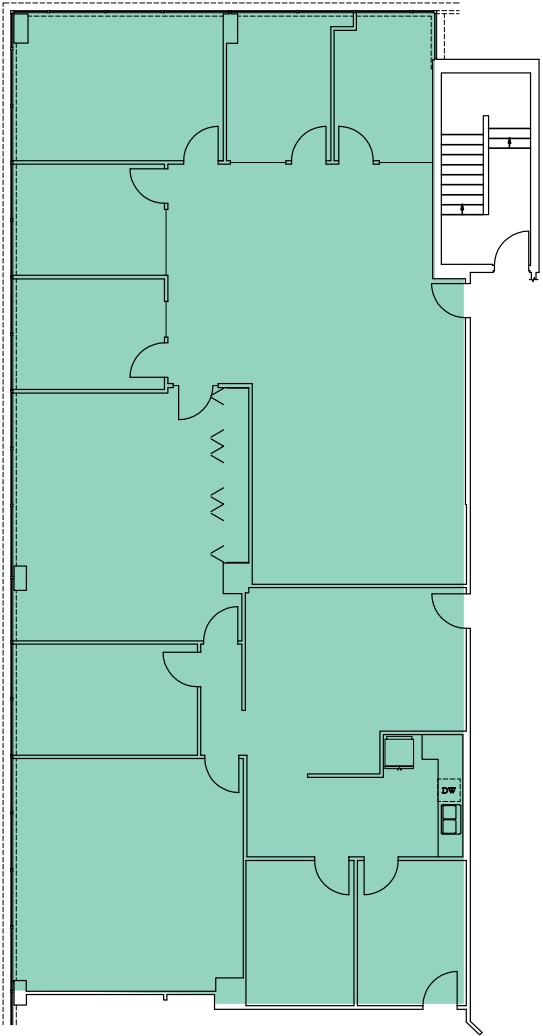


SUITE 500
Rentable area (sf): 2,683
Availability: Immediate
Improvements: Existing improvements in place

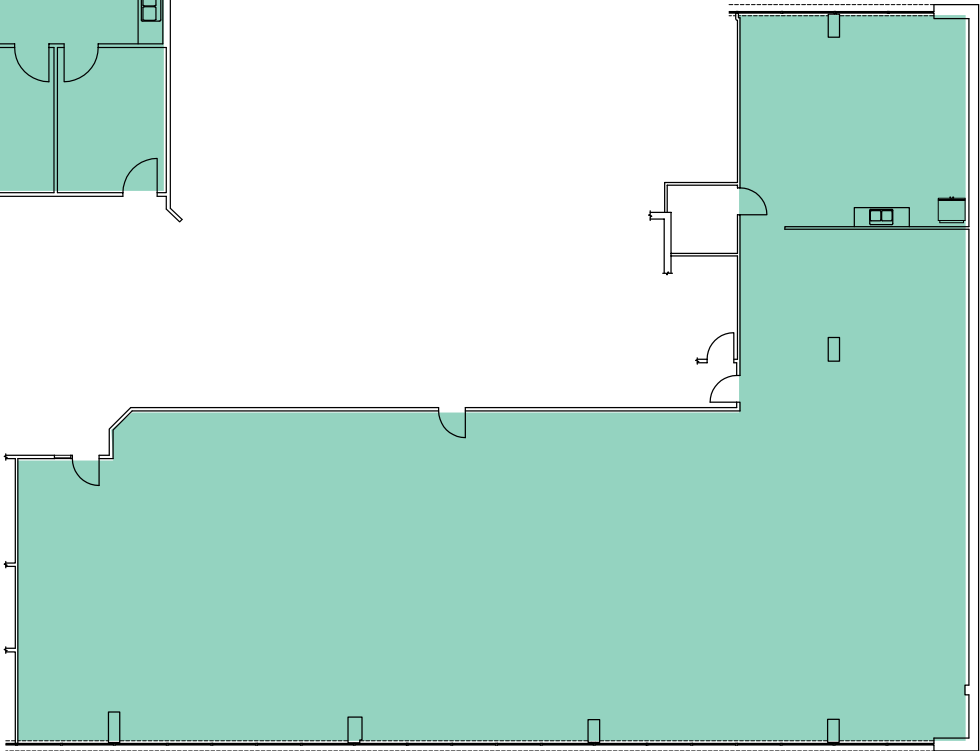
SUITE 200
Rentable area (sf): 17,839
Availability: April 1, 2026



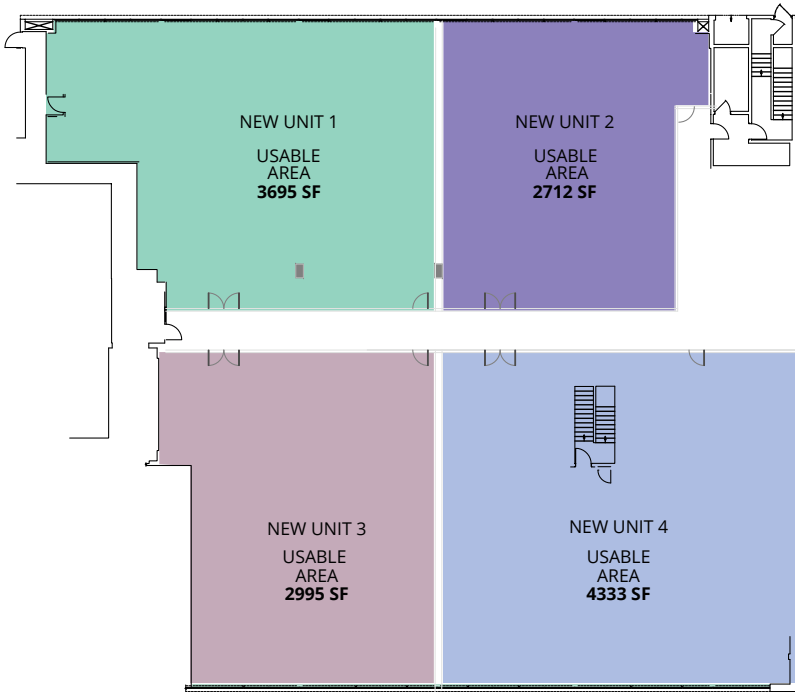
SUITE 350/360
Rentable area (sf): 3,994
Availability: On notice

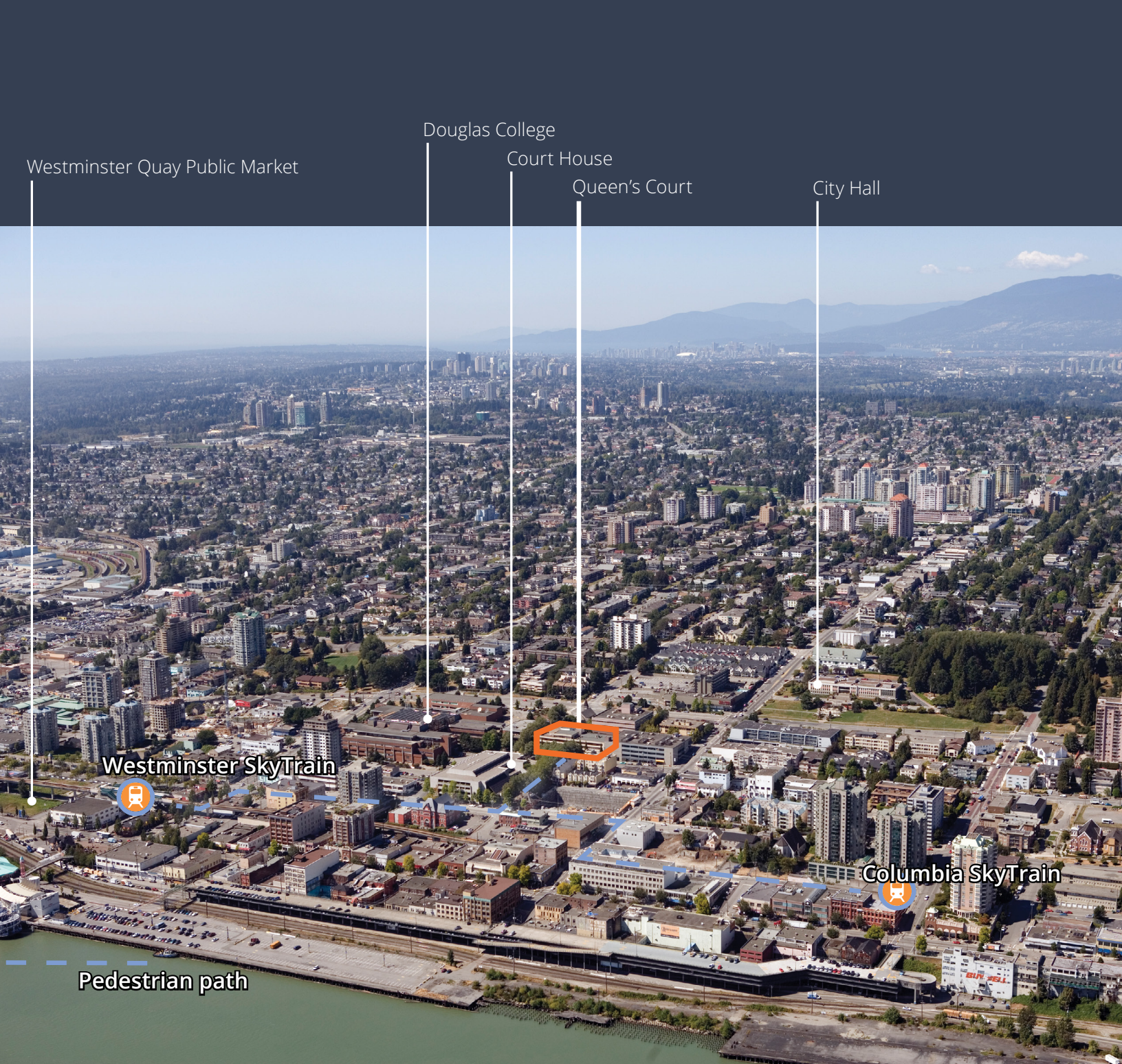


SUITE 311
Rentable area (sf): 6,032
Availability: On notice



DEMISING OPTIONS





Contact us for more information

Nicolas Bilodeau, Senior Vice President
604 647 1336
nicolas.bilodeau@avisonyoung.com

Josh Sookero*, Principal
604 647 5091
josh.sookero@avisonyoung.com
*Josh Sookero Personal Real Estate Corporation

© 2026 Avison Young. All rights reserved. E. & O.E.: The information contained herein was obtained from sources that we deem reliable and, while thought to be correct, is not guaranteed by Avison Young Commercial Real Estate Services, LP ("Avison Young")

**AVISON
YOUNG**

CANADA **BEST
MANAGED
COMPANIES**
Platinum member

#2900-1055 West Georgia Street
P.O. Box 11109 Royal Centre
Vancouver, BC V6E 3P3, Canada

[avisonyoung.com](https://www.avisonyoung.com)